

NOTE: PLACE TEMPORARY ROCK SEDIMENT DAMS TYPE - B AND TEMPORARY ROCK SILT CHECKS TYPE - A AT DRAINAGE OUTLETS.

 ENVIRONMENTALLY SENSITIVE AREA  
SEE PROJECT SPECIAL PROVISIONS

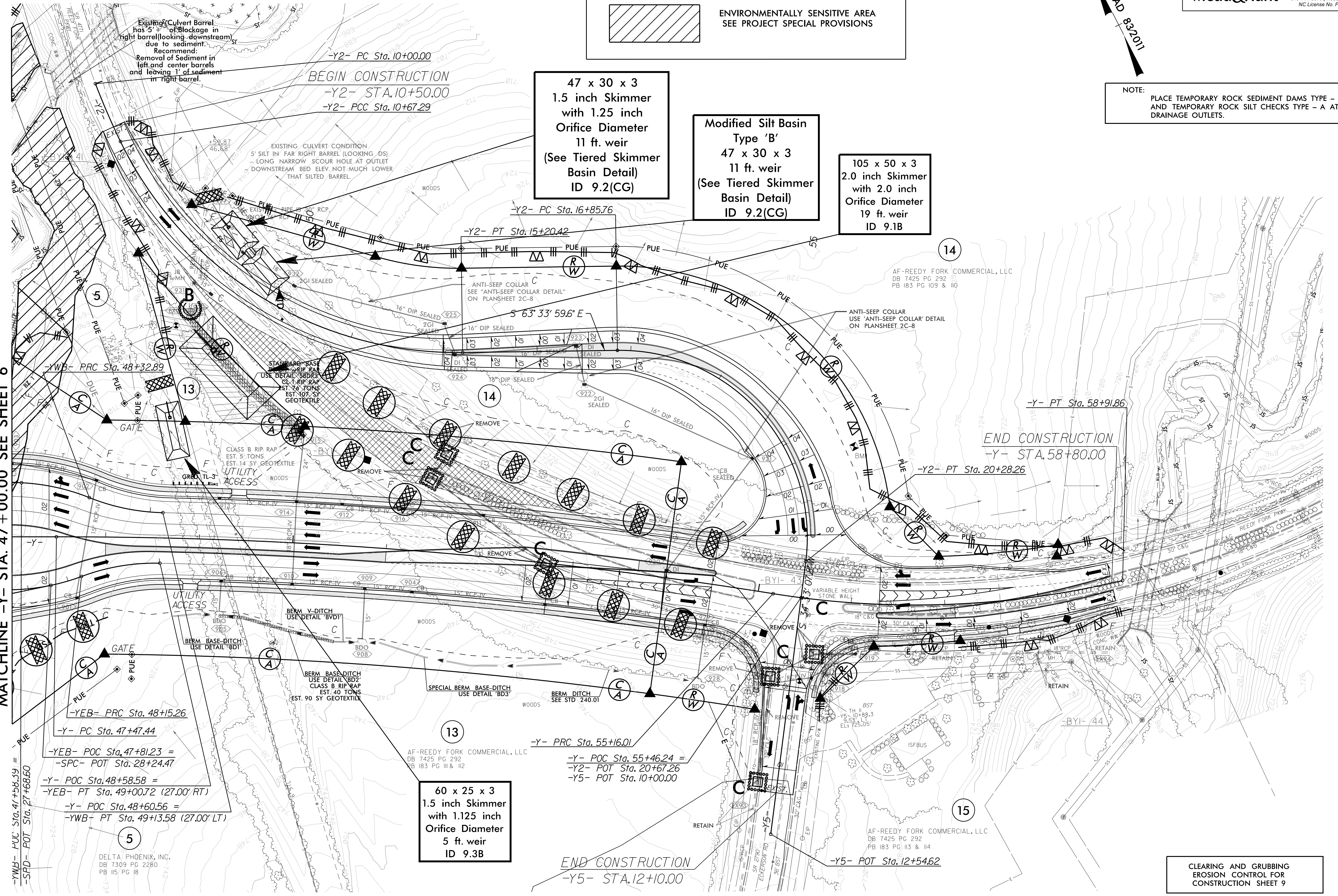
47 x 30 x 3  
1.5 inch Skimmer  
with 1.25 inch  
Orifice Diameter  
11 ft. weir  
(See Tiered Skimmer  
Basin Detail)  
ID 9.2(CG)

Modified Silt Basin  
Type 'B'  
47 x 30 x 3  
11 ft. weir  
(See Tiered Skimmer  
Basin Detail)  
ID 9.2(CG)

105 x 50 x 3  
2.0 inch Skimmer  
with 2.0 inch  
Orifice Diameter  
19 ft. weir  
ID 9.1B

60 x 25 x 3  
1.5 inch Skimmer  
with 1.125 inch  
Orifice Diameter  
5 ft. weir  
ID 9.3B

MATCHLINE -Y- STA. 47 + 00.00 SEE SHEET 6



-YWB- POC Sta. 47+58.59 =  
-SPD- POT Sta. 27+68.60  
-YEB- PRC Sta. 48+32.89  
-Y- PC Sta. 47+47.44  
-YEB- POC Sta. 47+81.23 =  
-SPC- POT Sta. 28+24.47  
-Y- POC Sta. 48+58.58 =  
-YEB- PT Sta. 49+00.72 (27.00' RT)  
-Y- POC Sta. 48+60.56 =  
-YWB- PT Sta. 49+13.58 (27.00' LT)

-Y- PRC Sta. 55+16.01  
-Y- POC Sta. 55+46.24 =  
-Y2- POT Sta. 20+67.26  
-Y5- POT Sta. 10+00.00

-Y5- POT Sta. 12+54.62

END CONSTRUCTION  
-Y5- STA. 12+10.00

CLEARING AND GRUBBING  
EROSION CONTROL FOR  
CONSTRUCTION SHEET 9