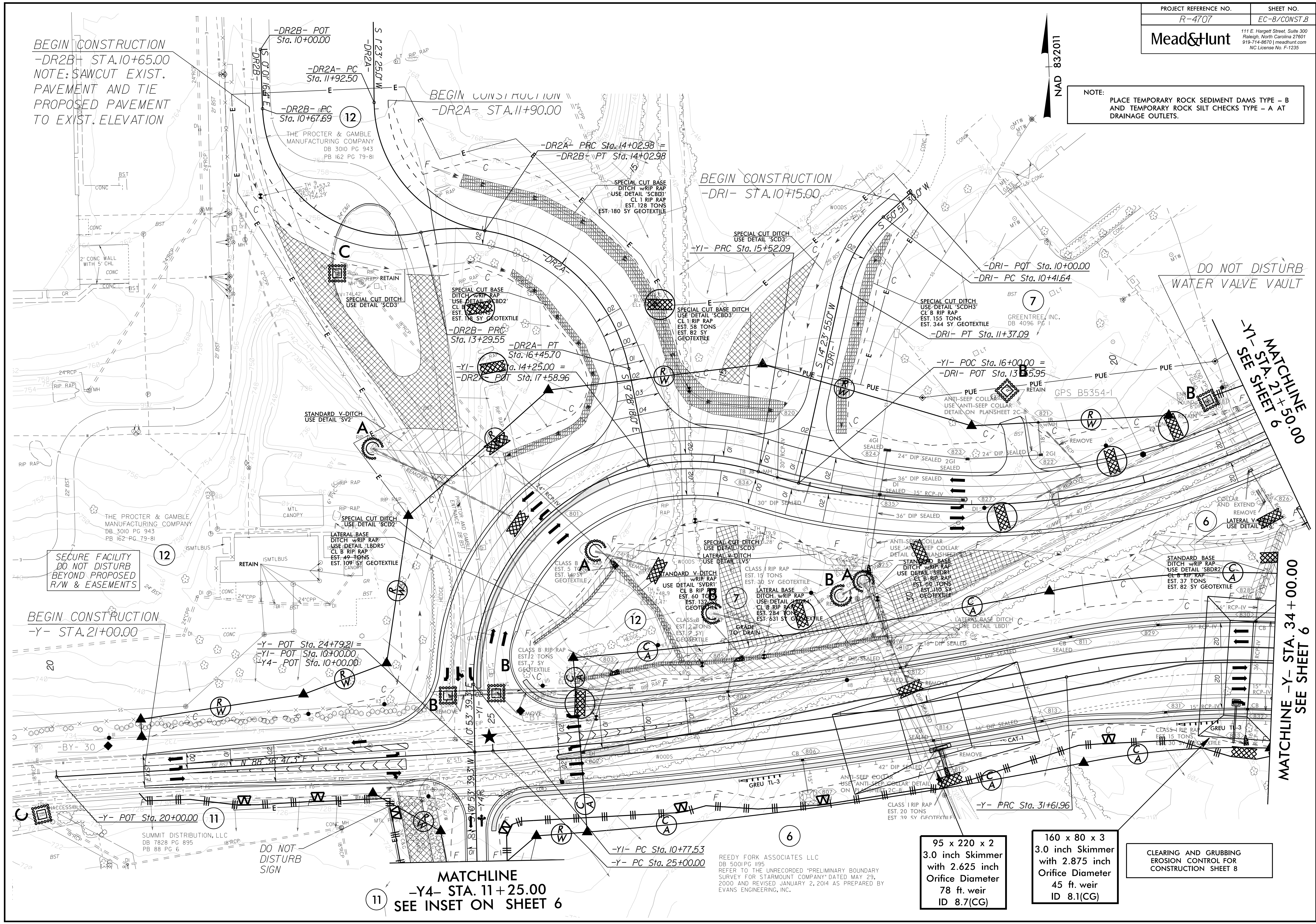


NOTE:
 PLACE TEMPORARY ROCK SEDIMENT DAMS TYPE - B AND TEMPORARY ROCK SILT CHECKS TYPE - A AT DRAINAGE OUTLETS.



BEGIN CONSTRUCTION
 -DR2B+ STA. 10+65.00
 NOTE: SAWCUT EXIST.
 PAVEMENT AND TIE
 PROPOSED PAVEMENT
 TO EXIST. ELEVATION

BEGIN CONSTRUCTION
 -DR2A- STA. 11+90.00

BEGIN CONSTRUCTION
 -DR1- STA. 10+15.00

DO NOT DISTURB
 WATER VALVE VAULT

SECURE FACILITY
 DO NOT DISTURB
 BEYOND PROPOSED
 R/W & EASEMENTS

BEGIN CONSTRUCTION
 -Y- STA. 21+00.00

DO NOT
 DISTURB
 SIGN

MATCHLINE
 -Y4- STA. 11+25.00
 SEE INSET ON SHEET 6

MATCHLINE
 -Y1- STA. 21+50.00
 SEE SHEET 6

MATCHLINE -Y- STA. 34+00.00
 SEE SHEET 6

95 x 220 x 2
 3.0 inch Skimmer
 with 2.625 inch
 Orifice Diameter
 78 ft. weir
 ID 8.1(CG)

160 x 80 x 3
 3.0 inch Skimmer
 with 2.875 inch
 Orifice Diameter
 45 ft. weir
 ID 8.1(CG)

CLEARING AND GRUBBING
 EROSION CONTROL FOR
 CONSTRUCTION SHEET 8

REEDY FORK ASSOCIATES LLC
 DB 5001PG 1195
 REFER TO THE UNRECORDED "PRELIMINARY BOUNDARY
 SURVEY FOR STARMOUNT COMPANY" DATED MAY 29,
 2000 AND REVISED JANUARY 2, 2014 AS PREPARED BY
 EVANS ENGINEERING, INC.