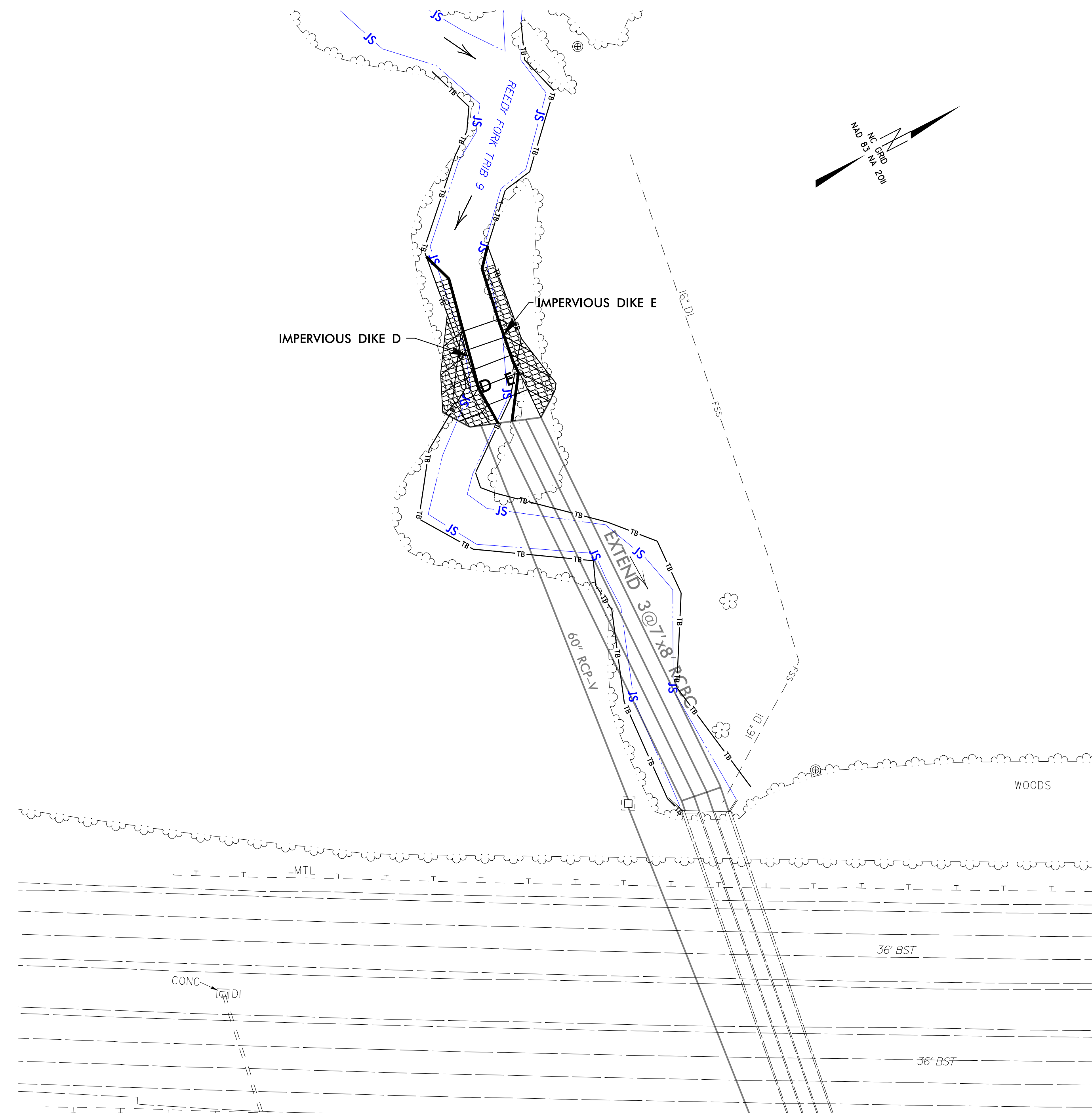


PROJECT REFERENCE NO.	SHEET NO.
R-4707	EC-66/CONST.06
RW SHEET NO.	
ROADWAY DESIGN ENGINEER	HYDRAULICS ENGINEER

# CULVERT CONSTRUCTION SEQUENCE STA. 56+34.9 -L-

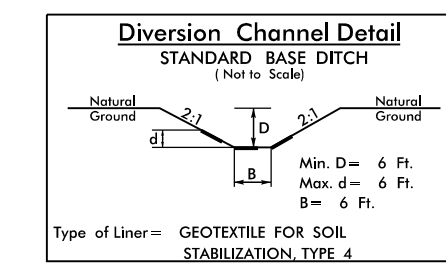
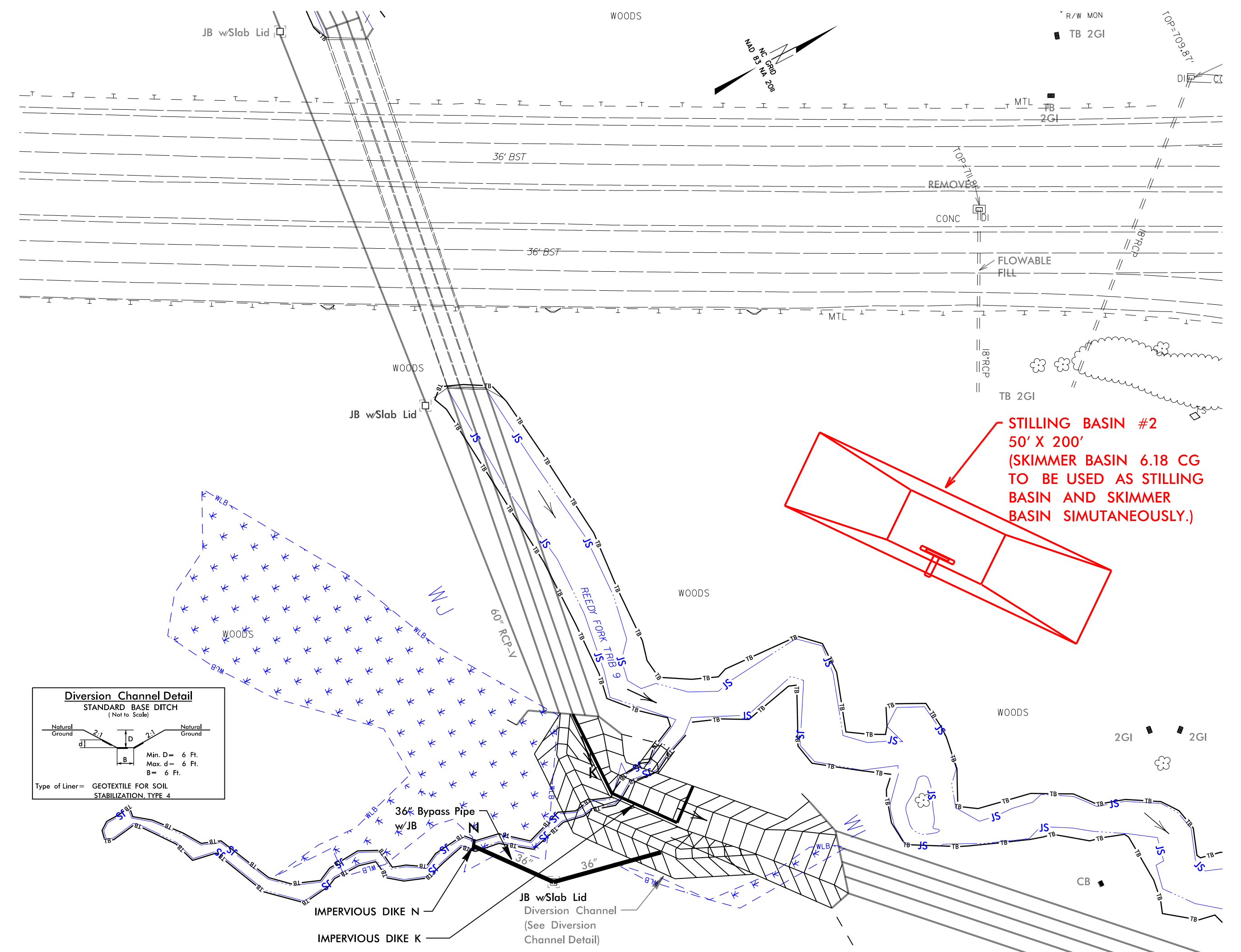
## PHASE IV Upstream

1. Keep Impervious Dikes D and E in place during Phase IV and Phase V for downstream diversion channel.



## PHASE IV Downstream

1. Remove Impervious Dikes F,G, and O, Reconfigure Diversion Channel from southern barrel to downstream portion of Stream Realignment Channel, and Install Impervious DiKE K.
2. Reconfigure Temporary Pipe for tributary drainage to new Diversion Channel
3. Construct Upstream northern portion of Stream Realignment Channel.



**STILLING BASIN #2**  
50' X 200'  
(SKIMMER BASIN 6.18 CG TO BE USED AS STILLING BASIN AND SKIMMER BASIN SIMULTANEOUSLY.)