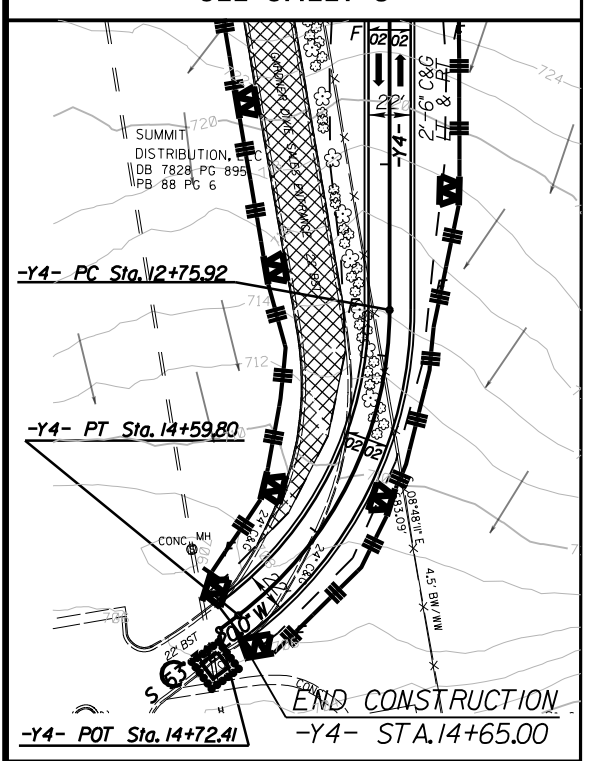


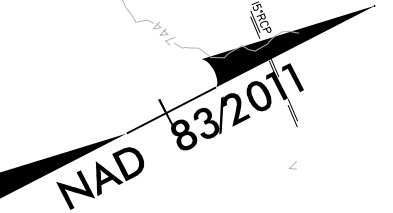
| REVISIONS |
|-----------|
| |
| |
| |

-Y4- CURVE DATA
 PI Sta 13+74.94
 $\Delta = 52^{\circ} 40' 40.7" (RT)$
 $D = 28^{\circ} 38' 52.4"$
 $L = 183.88'$
 $T = 99.02'$
 $R = 200.00'$

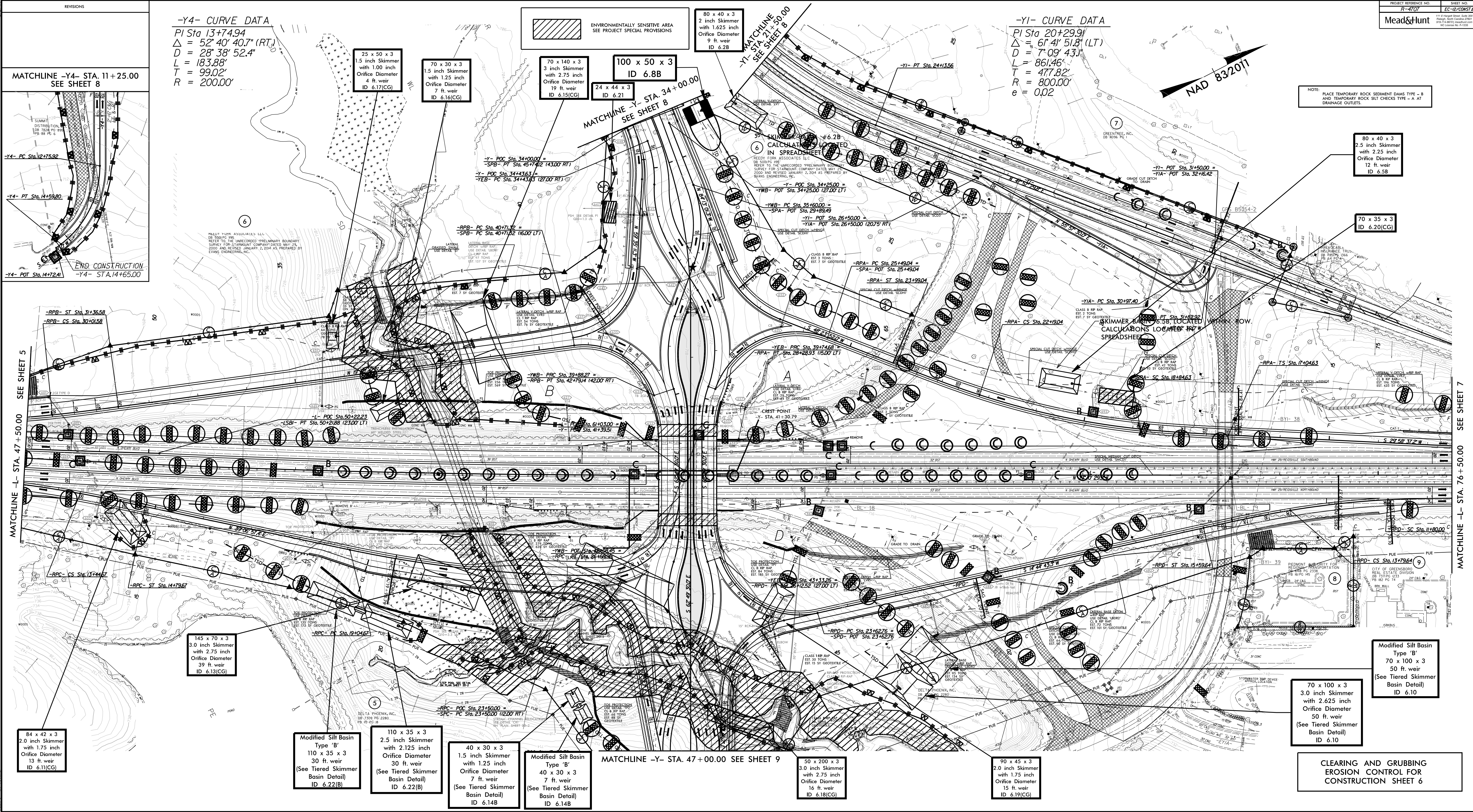
MATCHLINE -Y4- STA. 11+25.00
 SEE SHEET 8



-Y1- CURVE DATA
 PI Sta 20+29.91
 $\Delta = 61^{\circ} 41' 51.8" (LT)$
 $D = 7^{\circ} 09' 43.1"$
 $L = 861.46'$
 $T = 477.82'$
 $R = 800.00'$
 $e = 0.02$



NOTE: PLACE TEMPORARY ROCK SEDIMENT DAMS TYPE - B AND TEMPORARY ROCK SILT CHECKS TYPE - A AT DRAINAGE OUTLETS.



MATCHLINE -L- STA. 47+50.00
 SEE SHEET 5

MATCHLINE -L- STA. 76+50.00
 SEE SHEET 7

MATCHLINE -Y- STA. 47+00.00
 SEE SHEET 9

84 x 42 x 3
 2.0 inch Skimmer
 with 1.75 inch
 Orifice Diameter
 13 ft. weir
 ID 6.11(CG)

145 x 70 x 3
 3.0 inch Skimmer
 with 2.75 inch
 Orifice Diameter
 39 ft. weir
 ID 6.13(CG)

Modified Silt Basin
 Type 'B'
 110 x 35 x 3
 30 ft. weir
 (See Tiered Skimmer
 Basin Detail)
 ID 6.22(B)

110 x 35 x 3
 2.5 inch Skimmer
 with 2.125 inch
 Orifice Diameter
 30 ft. weir
 (See Tiered Skimmer
 Basin Detail)
 ID 6.22(B)

40 x 30 x 3
 1.5 inch Skimmer
 with 1.25 inch
 Orifice Diameter
 7 ft. weir
 (See Tiered Skimmer
 Basin Detail)
 ID 6.14(B)

Modified Silt Basin
 Type 'B'
 40 x 30 x 3
 7 ft. weir
 (See Tiered Skimmer
 Basin Detail)
 ID 6.14(B)

MATCHLINE -Y- STA. 47+00.00
 SEE SHEET 9

50 x 200 x 3
 3.0 inch Skimmer
 with 2.75 inch
 Orifice Diameter
 15 ft. weir
 ID 6.18(CG)

90 x 45 x 3
 2.0 inch Skimmer
 with 1.75 inch
 Orifice Diameter
 15 ft. weir
 ID 6.19(CG)

70 x 100 x 3
 3.0 inch Skimmer
 with 2.625 inch
 Orifice Diameter
 50 ft. weir
 (See Tiered Skimmer
 Basin Detail)
 ID 6.10

Modified Silt Basin
 Type 'B'
 70 x 100 x 3
 50 ft. weir
 (See Tiered Skimmer
 Basin Detail)
 ID 6.10

CLEARING AND GRUBBING
 EROSION CONTROL FOR
 CONSTRUCTION SHEET 6