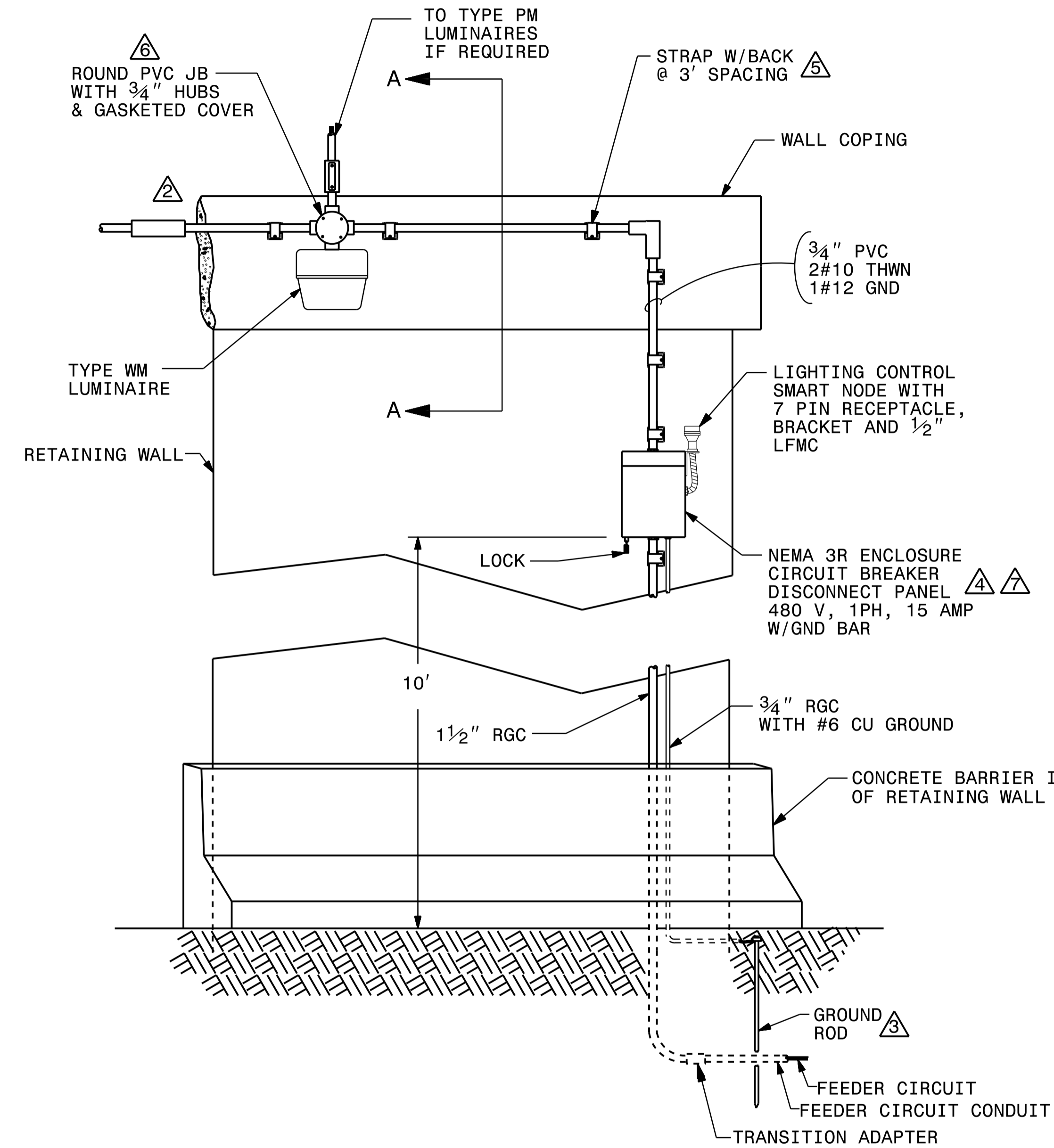
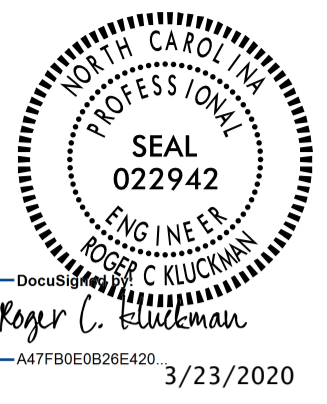


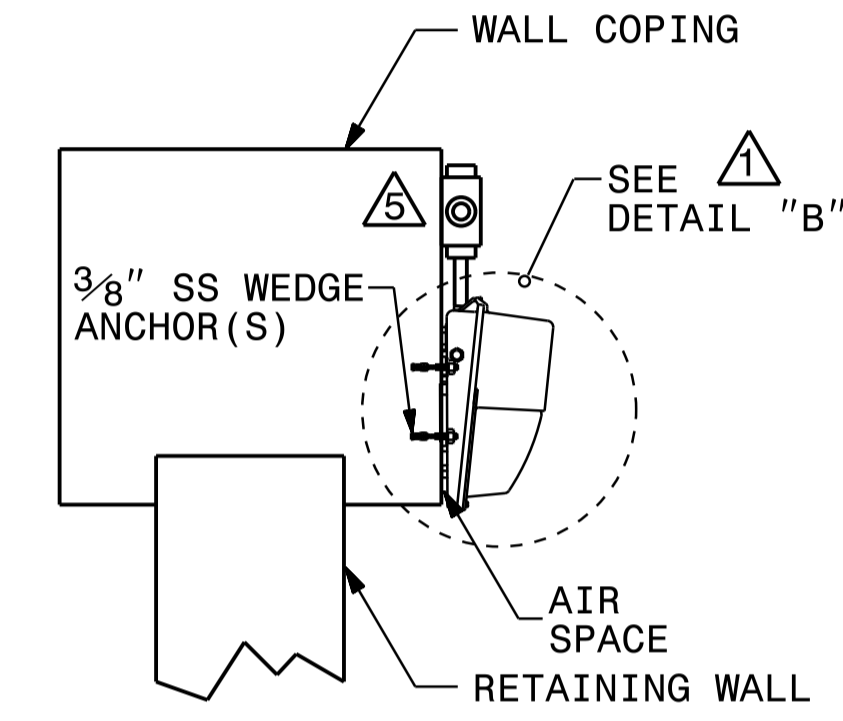
USE FOR LIGHTING CONSTRUCTION ONLY

DOCUMENT NOT CONSIDERED FINAL UNLESS ALL SIGNATURES COMPLETED

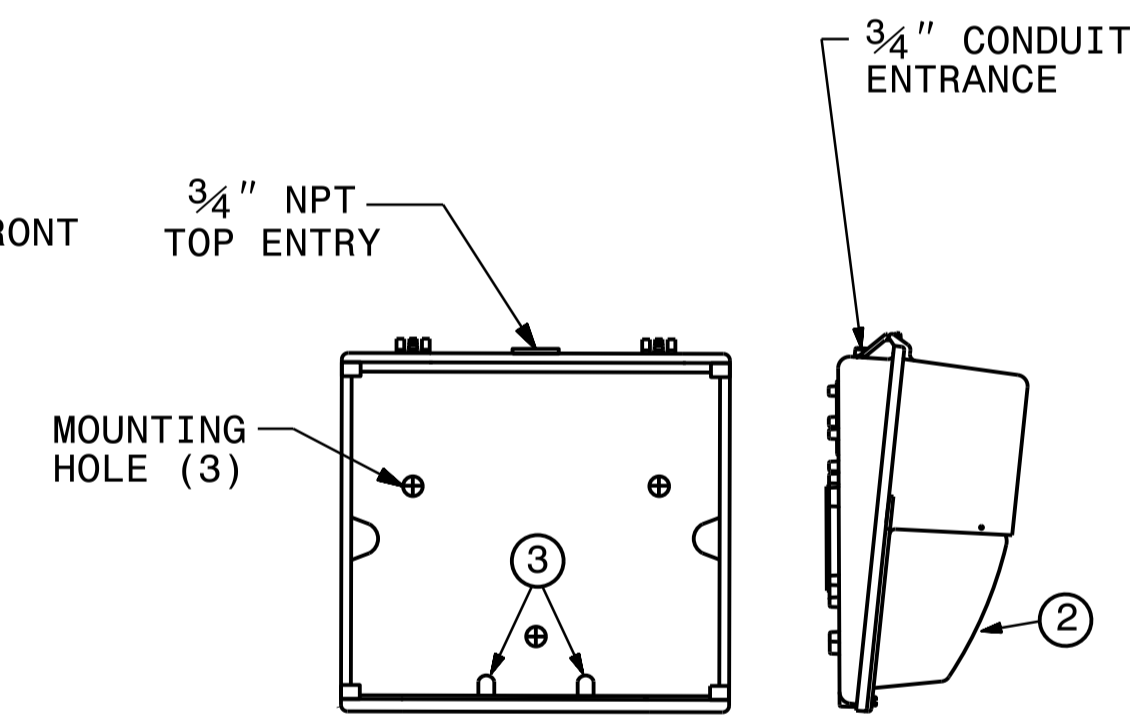


TYPE WM LED LUMINAIRE AND CIRCUITRY

- NOTES**
- ▲ MOUNT WM LED LUMINAIRE AT VERTICAL CENTER OF BENT CAP.
 - ▲ PROVIDE EXPANSION FITTINGS IN EACH SECTION OF CONDUIT THAT IS GREATER THAN 20' LONG BETWEEN TERMINALS AT JUNCTION BOXES ON PIER CAP.
 - ▲ EXTEND AWAY FROM WALL TO AVOID CONFLICT WITH FOOTING.
 - ▲ INSTALL INSULATED GROUNDING BUSHING FOR INCOMING FEEDER CIRCUIT IN RGS CONDUIT.
 - ▲ ATTACH CONDUIT AND HUBS TO FACE OF BENT CAP USING 1/4" SS WEDGE ANCHORS.
 - ▲ CAP ANY UNUSED PORTS FROM ROUND GASKETED HUB.
 - ▲ MOUNT DISCONNECT WITHIN 18" OF WALL CORNER.

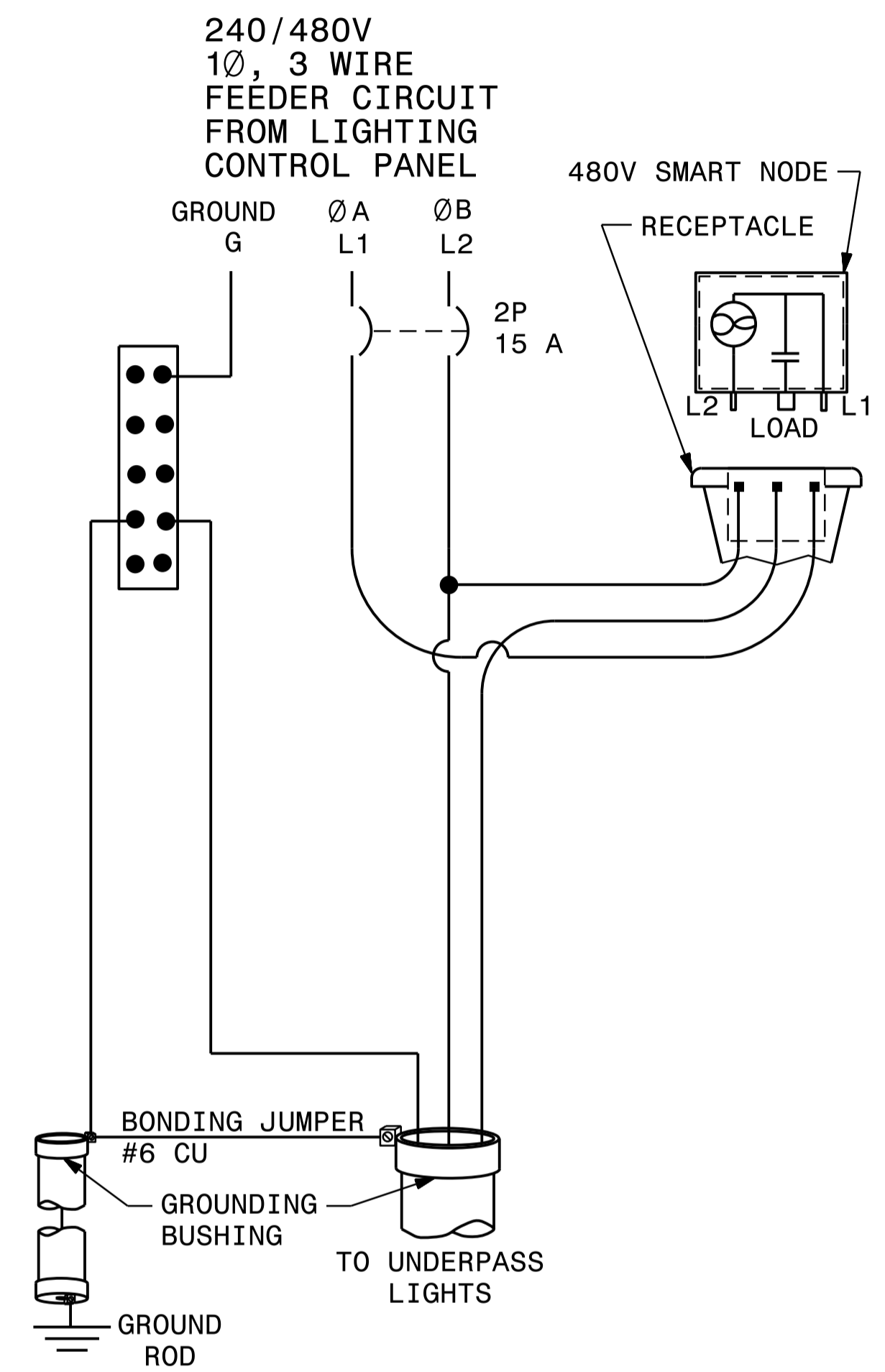


SECTION A-A



BACK SIDE DETAIL 'B'

- COMPONENTS**
- ① DIE CAST ALUMINUM HOUSING, DOOR & HINGE
 - ② PRISMATIC REFRACTOR
 - ③ TWO SCREW LATCH



DISCONNECT SCHEMATIC

23-MAR-2020 13:40 C:\work\p1\1\shaeen malik\dms05922\R4707_LE.PSH.E7.dgn

2			
1			
Rev.	Date	Description	Approved
NORTH CAROLINA DEPARTMENT OF TRANSPORTATION ROADWAY DESIGN LIGHTING/ELECTRICAL SECTION LIGHTING DETAILS 1412D01, SHEET 1 UNDERPASS LIGHTING INSTALLED ON RETAINING WALL COPING GUILFORD COUNTY			
Drawn By:	SAM	Approved By:	RGH
		Dwg No.:	