

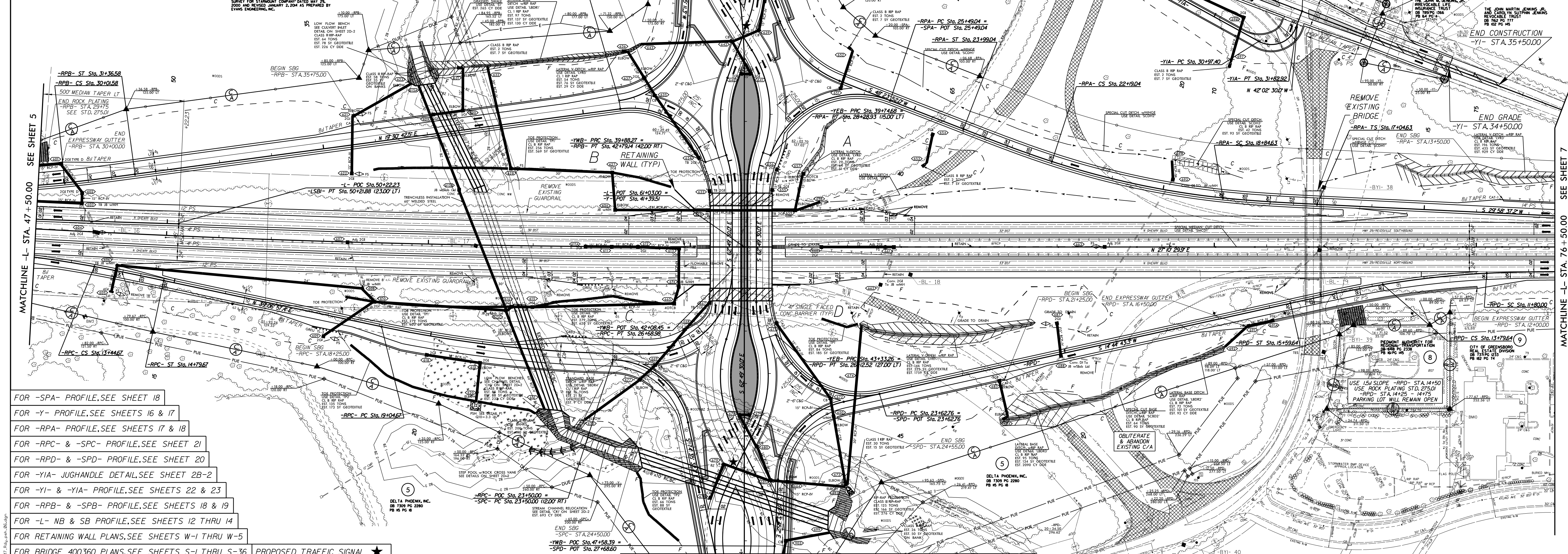
**TRAFFIC VOLUME DATA**

9,200	REEDY FORK PARKWAY		
13,000			
40,200	5,400	2,800	35,000
49,000	7,600	3,800	39,800
US 29	3,000	400	US29
	6,400	1,000	
2020 AADT	4,400	REEDY FORK PARKWAY	
2040 AADT	9,000		

**-Y4- CURVE DATA**  
 PI Sta 13+74.94  
 $\Delta = 52^\circ 40' 40.7''$  (RT)  
 $D = 28' 38'' 52.4''$   
 $L = 183.88'$   
 $T = 99.02'$   
 $R = 200.00'$

**-Y1- CURVE DATA**  
 PI Sta 20+29.91  
 $\Delta = 61^\circ 41' 51.8''$  (LT)  
 $D = 7' 09'' 43.1''$   
 $L = 861.46'$   
 $T = 477.82'$   
 $R = 800.00'$   
 $e = 0.02$

**-Y1A- CURVE DATA**  
 PI Sta 31+54.91  
 $\Delta = 98^\circ 00' 00.0''$  (LT)  
 $D = 114' 35'' 29.6''$   
 $L = 85.52'$   
 $T = 57.52'$   
 $R = 50.00'$   
 $e = 0.02$



- FOR -SPA- PROFILE, SEE SHEET 18
- FOR -Y- PROFILE, SEE SHEETS 16 & 17
- FOR -RPA- PROFILE, SEE SHEETS 17 & 18
- FOR -RPC- & -SPC- PROFILE, SEE SHEET 21
- FOR -RPD- & -SPD- PROFILE, SEE SHEET 20
- FOR -Y1A- JUGHANDLE DETAIL, SEE SHEET 2B-2
- FOR -Y1- & -Y1A- PROFILE, SEE SHEETS 22 & 23
- FOR -RPB- & -SPB- PROFILE, SEE SHEETS 18 & 19
- FOR -L- NB & SB PROFILE, SEE SHEETS 12 THRU 14
- FOR RETAINING WALL PLANS, SEE SHEETS W-1 THRU W-5
- FOR BRIDGE 400360 PLANS, SEE SHEETS S-1 THRU S-36
- FOR CULVERT 401285 PLANS, SEE SHEETS C-1 THRU C-9
- FOR CULVERT 400355 PLANS, SEE SHEETS C-1 THRU C-24
- FOR HORIZONTAL CURVE ALIGNMENT DATA, SEE SHEET 2B-6
- PROPOSED TRAFFIC SIGNAL ★
- BRIDGE APPROACH SLAB
- FOR DITCH DETAILS, SEE SHEET 2D-1
- FOR BRIDGE SKETCH, SEE SHEET 2B-5

PROJECT REFERENCE NO. **R-4707** SHEET NO. **6**

RW SHEET NO.

ROADWAY DESIGN ENGINEER

HYDRAULICS ENGINEER

SEAL 034381

SEAL 21656

4/17/2020

4/20/2020

**DOCUMENT NOT CONSIDERED FINAL UNLESS ALL SIGNATURES COMPLETED**

**Mead&Hunt**

111 E. Hargett Street, Suite 300  
 Raleigh, North Carolina 27601  
 919-714-8870 | meadandhunt.com  
 NC License No. F-1235

GRAPHIC SCALE  
 50 25 0 25 50 100  
 PLANS

MATCHLINE -Y- STA. 47+25.00 SEE SHEET 9