

8.17.19

-L- CURVE DATA

PI Sta 52+64.99
Δ = 3° 42' 45.0" (LT)
D = 0' 15' 00.0"
L = 1,485.00'
T = 742.76'
R = 22,918.31'
e = NC

-LSBI- CURVE DATA

PI Sta 47+72.06
Δ = 1° 15' 00.6" (LT)
D = 0' 15' 00.7"
L = 499.65'
T = 249.83'
R = 22,899.31'
e = NC

-RPB- CURVE DATA

PI Sta 16+63.54
Δ = 3° 06' 34.5" (RT)
D = 0' 42' 10.9"
L = 442.32'
T = 221.22'
R = 8,150.00'
e = NC

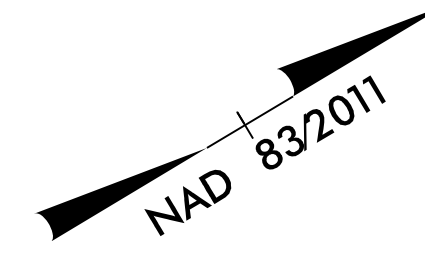
PIs Sta 26+74.65
Θs = 1° 50' 29.9"
Ls = 135.00'
LT = 90.00'
ST = 45.00'
INC = 45°

PI Sta 28+60.83
Δ = 7° 41' 32.6" (LT)
D = 2° 43' 42.1"
L = 281.94'
T = 141.8'
R = 2,100.00'
e = 0.05

-RPC- CURVE DATA

PIs Sta 10+90.00
Θs = 1° 36' 41.2"
Ls = 135.00'
LT = 90.00'
ST = 45.00'
INC = 45°

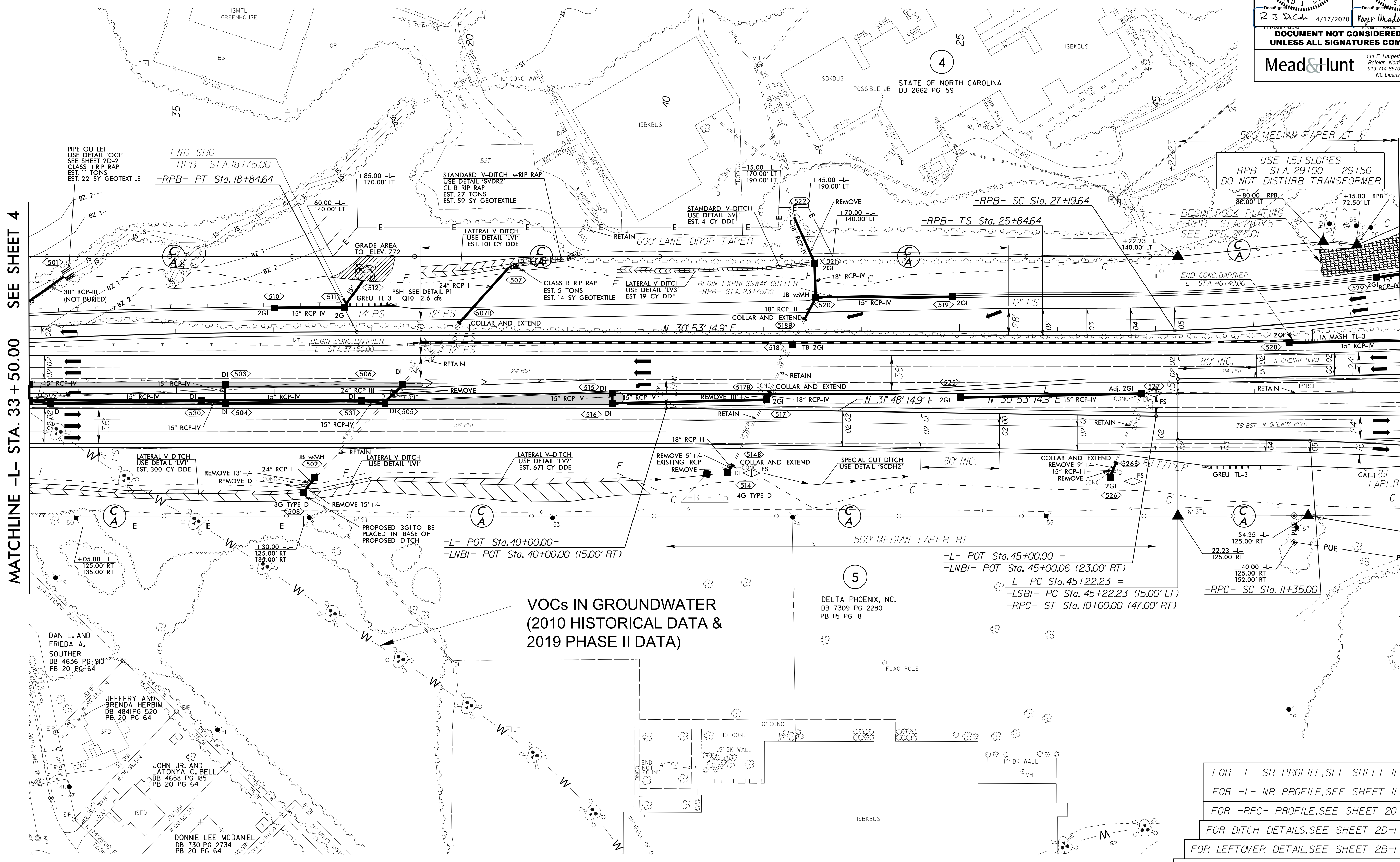
PI Sta 12+39.90
Δ = 5° 00' 20.0" (RT)
D = 2° 23' 14.4"
L = 209.67'
T = 104.90'
R = 2,400.00'
e = 0.05



PROJECT REFERENCE NO. R-4707		SHEET NO. 5	
ROADWAY DESIGN ENGINEER		HYDRAULICS ENGINEER	
R. S. DeCh 4/17/2020		Roger Weadon 4/20/2020	
DOCUMENT NOT CONSIDERED FINAL UNLESS ALL SIGNATURES COMPLETED			
<small>111 E. Hargett Street, Suite 300 Raleigh, North Carolina 27601 919-714-8570 meadandhunt.com NC License No. F-1235</small>			

MATCHLINE -L- STA. 33 + 50.00 SEE SHEET 4

MATCHLINE -L- STA. 47 + 50.00 SEE SHEET 6



PIPE OUTLET USE DETAIL 'OCY' SEE SHEET 2D-2 CLASS II RIP RAP EST. 11 TONS EST. 22 SY GEOTEXTILE

END SBG -RPB- STA.18+75.00 -RPB- PT Sta.18+84.64

STANDARD V-DITCH w/ RIP RAP USE DETAIL 'SVDR2' CL B RIP RAP EST. 27 TONS EST. 59 SY GEOTEXTILE

CLASS B RIP RAP EST. 5 TONS EST. 14 SY GEOTEXTILE

REMOVE +70.00 -L- 140.00' LT

USE 1.5:1 SLOPES -RPB- STA. 29+00 - 29+50 DO NOT DISTURB TRANSFORMER

BEGIN ROCK PLATING -RPB- STA. 28+75 SEE STD. 275.01

END CONC. BARRIER -L- STA. 46+40.00

-L- POT Sta. 40+00.00 = -LNBI- POT Sta. 40+00.00 (15.00' RT)

-L- POT Sta. 45+00.00 = -LNBI- POT Sta. 45+00.06 (23.00' RT) -L- PC Sta. 45+22.23 = -LSBI- PC Sta. 45+22.23 (15.00' RT) -RPC- ST Sta. 10+00.00 (47.00' RT)

VOCs IN GROUNDWATER (2010 HISTORICAL DATA & 2019 PHASE II DATA)

FOR -L- SB PROFILE, SEE SHEET 11
 FOR -L- NB PROFILE, SEE SHEET 11
 FOR -RPC- PROFILE, SEE SHEET 20
 FOR DITCH DETAILS, SEE SHEET 2D-1
 FOR LEFTOVER DETAIL, SEE SHEET 2B-1
 FOR -RPB- PROFILE, SEE SHEETS 18 & 19

27-MAR-2020 09:35 R:\Roadway\p-cj\184707-Rdy_psh_05.dgn