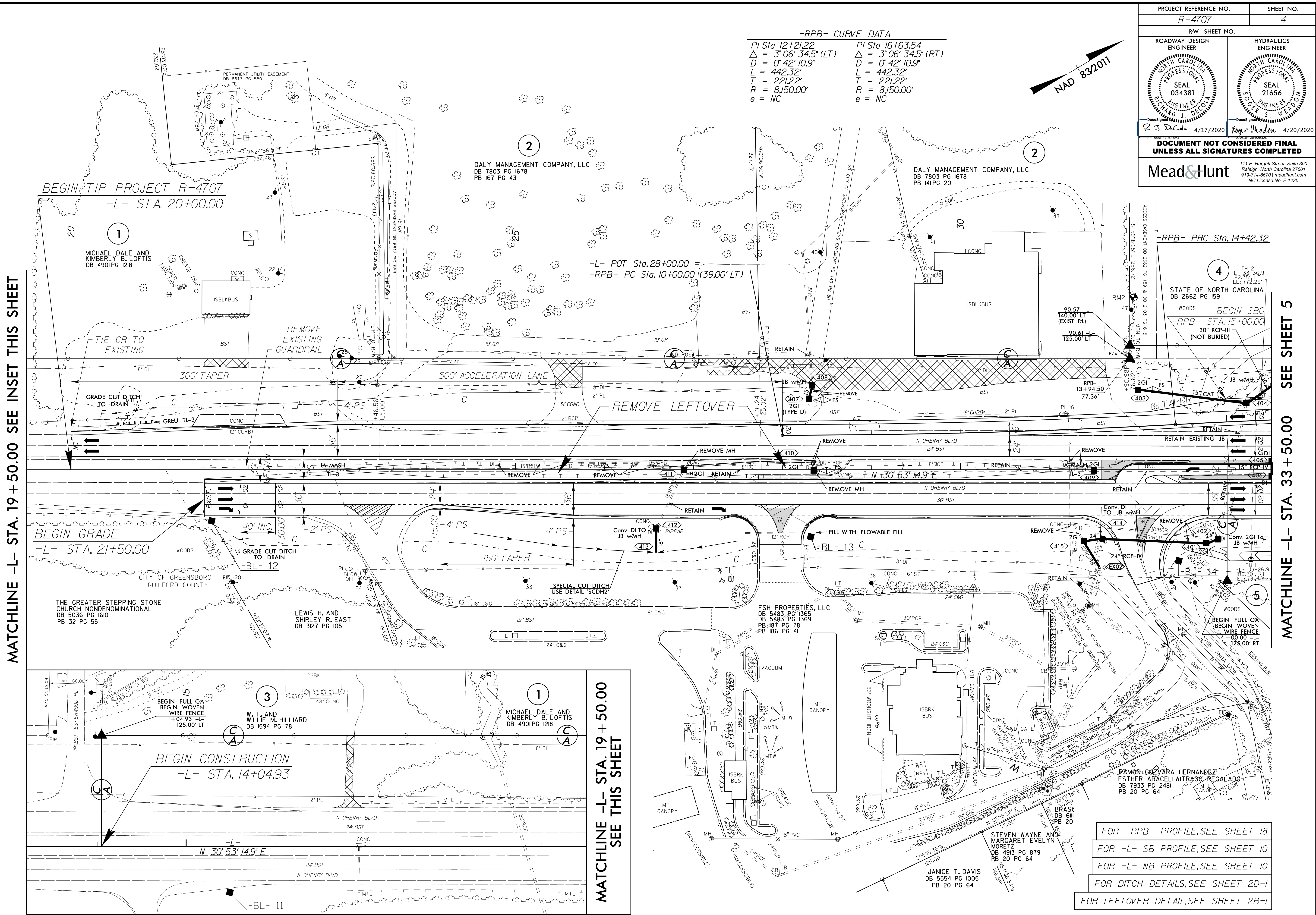
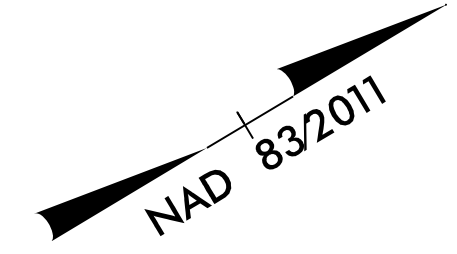


PROJECT REFERENCE NO. R-4707		SHEET NO. 4	
RW SHEET NO.			
ROADWAY DESIGN ENGINEER R S Decker NORTH CAROLINA PROFESSIONAL SEAL 034381 4/17/2020		HYDRAULICS ENGINEER Roger Weadon NORTH CAROLINA PROFESSIONAL SEAL 21656 4/20/2020	
DOCUMENT NOT CONSIDERED FINAL UNLESS ALL SIGNATURES COMPLETED			
Mead & Hunt 111 E. Hargett Street, Suite 300 Raleigh, North Carolina 27601 919-714-8570 meadandhunt.com NC License No. F-1235			

-RPB- CURVE DATA

PI Sta 12+21.22	PI Sta 16+63.54
$\Delta = 3^{\circ} 06' 34.5" (LT)$	$\Delta = 3^{\circ} 06' 34.5" (RT)$
$D = 0^{\circ} 42' 10.9"$	$D = 0^{\circ} 42' 10.9"$
$L = 442.32'$	$L = 442.32'$
$T = 221.22'$	$T = 221.22'$
$R = 8,150.00'$	$R = 8,150.00'$
$e = NC$	$e = NC$



MATCHLINE -L- STA. 19 + 50.00 SEE INSET THIS SHEET

MATCHLINE -L- STA. 33 + 50.00 SEE SHEET 5

BEGIN TIP PROJECT R-4707
-L- STA. 20+00.00

-L- POT Sta. 28+00.00 =
-RPB- PC Sta. 10+00.00 (39.00' LT)

-RPB- PRC Sta. 14+42.32

BEGIN GRADE
-L- STA. 21+50.00

BEGIN CONSTRUCTION
-L- STA. 14+04.93

MATCHLINE -L- STA. 19 + 50.00
SEE THIS SHEET

FOR -RPB- PROFILE, SEE SHEET 18
FOR -L- SB PROFILE, SEE SHEET 10
FOR -L- NB PROFILE, SEE SHEET 10
FOR DITCH DETAILS, SEE SHEET 2D-1
FOR LEFTOVER DETAIL, SEE SHEET 2B-1