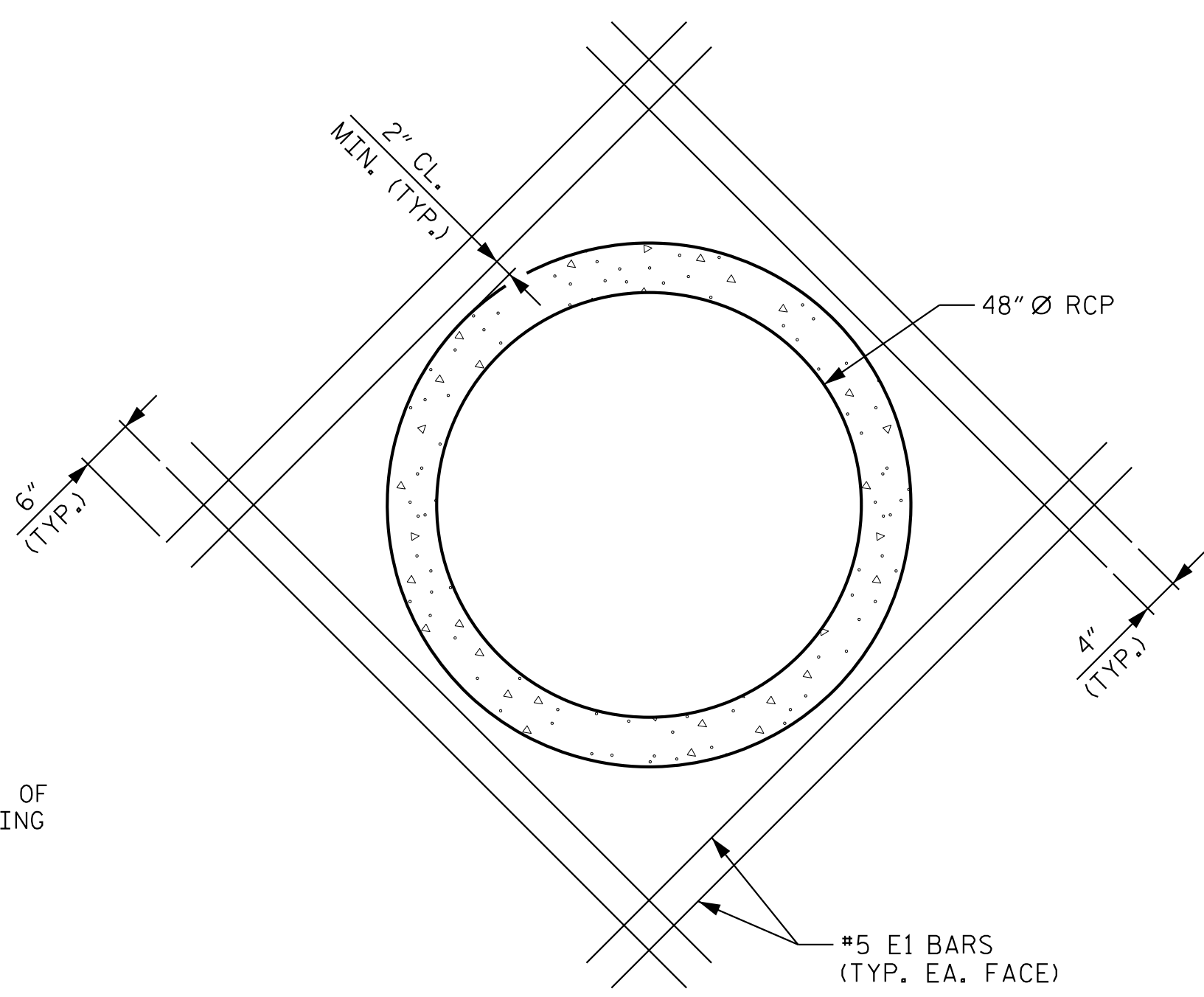


PLAN W1

(FOR APPROXIMATE PLAN VIEW LOCATION OF R.C. PIPE, SHEET C-1)



DETAIL OF REINFORCING AROUND 48" Ø RCP

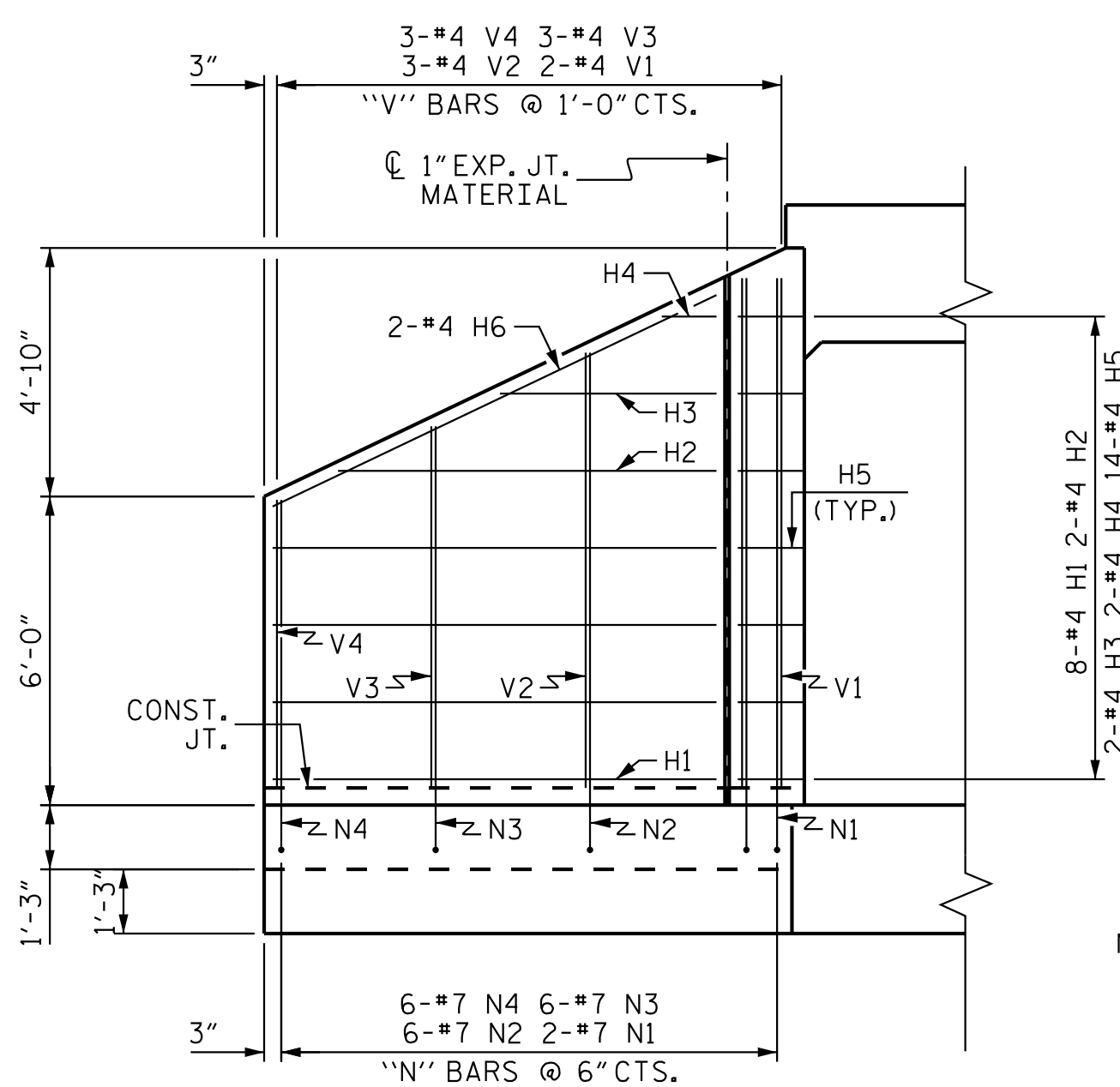
\* S1 BARS @ BOTTOM OF FLOOR SLAB & FOOTING

**BAR TYPES**

ALL BAR DIMENSIONS ARE OUT TO OUT.

| BAR NO. | SIZE | TYPE | LENGTH | WEIGHT  |     |
|---------|------|------|--------|---------|-----|
| E1      | 16   | 5    | STR    | 6'-10"  | 114 |
| H1      | 8    | 4    | STR    | 8'-7"   | 46  |
| H2      | 2    | 4    | STR    | 7'-4"   | 10  |
| H3      | 2    | 4    | STR    | 4'-2"   | 6   |
| H4      | 2    | 4    | STR    | 1'-0"   | 1   |
| H5      | 14   | 4    | 1      | 3'-3"   | 30  |
| H6      | 2    | 4    | STR    | 9'-6"   | 13  |
| N1      | 2    | 7    | 2      | 12'-4"  | 50  |
| N2      | 6    | 7    | 2      | 10'-10" | 133 |
| N3      | 6    | 7    | 2      | 9'-5"   | 115 |
| N4      | 6    | 7    | 2      | 8'-0"   | 98  |
| S1      | 3    | 6    | STR    | 6'-0"   | 27  |
| T1      | 3    | 5    | STR    | 10'-6"  | 33  |
| V1      | 2    | 4    | STR    | 9'-10"  | 13  |
| V2      | 3    | 4    | STR    | 8'-5"   | 17  |
| V3      | 3    | 4    | STR    | 7'-0"   | 14  |
| V4      | 3    | 4    | STR    | 5'-7"   | 11  |
| Z1      | 2    | 7    | 3      | 7'-2"   | 29  |
| Z2      | 3    | 7    | 3      | 6'-3"   | 38  |
| Z3      | 3    | 7    | 3      | 5'-4"   | 33  |
| Z4      | 3    | 7    | 3      | 4'-4"   | 27  |

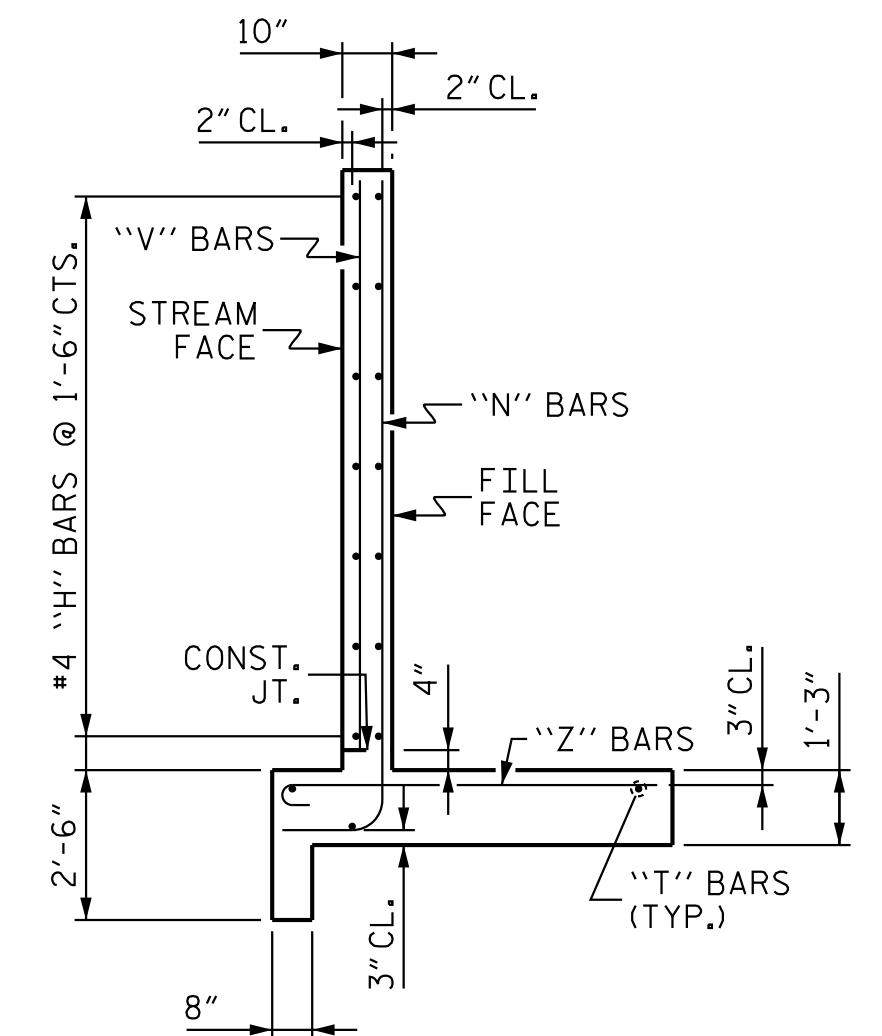
|                    |         |
|--------------------|---------|
| REINFORCING STEEL  | 858 LBS |
| FOR 1 WING         |         |
| CLASS A CONCRETE   |         |
| 1 WING             | 6.3 CY  |
| 1 HEADWALL         | 2.9 CY  |
| 1 END CURTAIN WALL | 2.1 CY  |
| TOTAL              | 11.3 CY |



ELEVATION W1

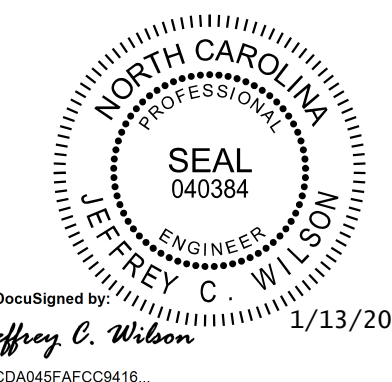
NOTE: THE 48" Ø PIPE THROUGH THE WING WALL OF THE CULVERT SHALL BE LOCATED BY THE ENGINEER. THE REINFORCING STEEL SHALL BE FIELD BENT AS NECESSARY TO CLEAR THE PIPE.

FOR APPROXIMATE PLAN VIEW LOCATION OF R.C. PIPE, SEE SHEET C-1.



TYPICAL WING SECTION

PROJECT NO. U-2579BA  
FORSYTH COUNTY  
 STATION: 45+66.21 -Y4-  
 SHEET 6 OF 8



**Kimley»Horn**  
 421 Fayetteville Street, Suite 600  
 Raleigh, NC 27601-1772  
 Phone (919) 677-2000 NC LICENSE # F-0102

STATE OF NORTH CAROLINA  
 DEPARTMENT OF TRANSPORTATION  
 RALEIGH  
**OUTLET WING DETAILS FOR CONCRETE BOX CULVERT**  
 H = 9'-0" SLOPE = 2:1  
 45° OR 135° SKEW

| REVISIONS |     |       |     |     |       | SHEET NO.    |
|-----------|-----|-------|-----|-----|-------|--------------|
| NO.       | BY: | DATE: | NO. | BY: | DATE: | C-6          |
| 1         |     |       | 3   |     |       | TOTAL SHEETS |
| 2         |     |       | 4   |     |       | 8            |

**DOCUMENT NOT CONSIDERED FINAL UNLESS ALL SIGNATURES COMPLETED**

K:\ARDI\_Structures\Curves\NC\01036480\_U-2579BA\Cad\09\N2579B\_SML\_C006\_330367.dgn

DRAWN BY: J.I.KIMBLE DATE: 1/20  
 CHECKED BY: C.T.POOLE DATE: 1/20  
 DESIGN ENGINEER OF RECORD: J.C.WILSON DATE: 1/20