

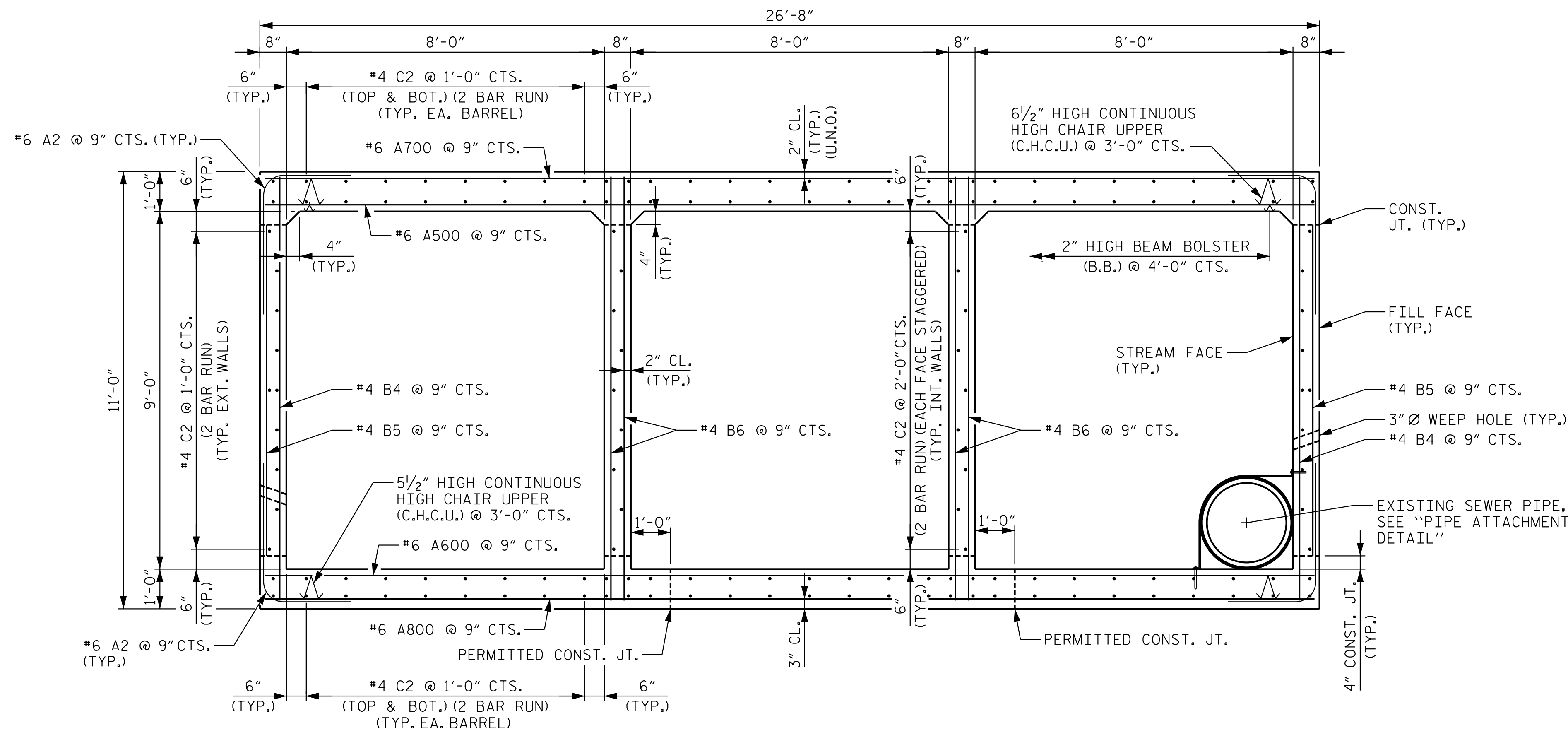
NOTES

GALVANIZED STEEL STRAP MAY BE SLIGHTLY SHIFTED TO MISS REINFORCING STEEL.

MAXIMUM GALVANIZED STEEL STRAP SPACING IS 10'-0".

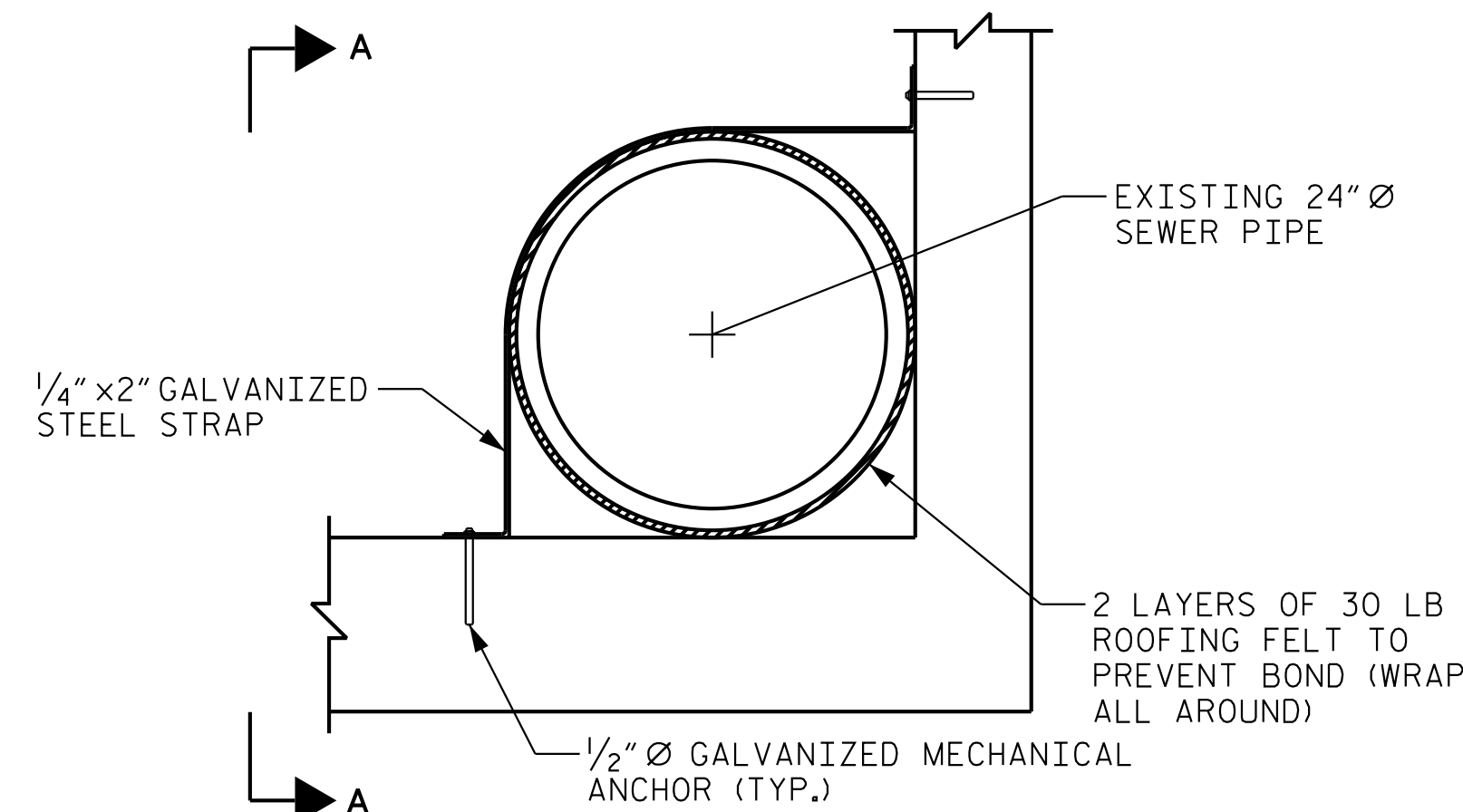
EXISTING SEWER PIPE DIMENSIONS AND ELEVATIONS BASED ON FIELD MEASUREMENT. CONTRACTOR TO VERIFY AND NOTIFY THE ENGINEER IMMEDIATELY IF THE DIMENSIONS OR ELEVATIONS VARY FROM THE PLANS.

CONTRACTOR SHALL LOCATE REINFORCING STEEL PRIOR TO DRILLING HOLES FOR MECHANICAL ANCHORS. MECHANICAL ANCHORS SHALL BE LOCATED SUCH THAT IT DOES NOT INTERFERE WITH REINFORCING STEEL. IF REINFORCING STEEL IS ENCOUNTERED WHILE DRILLING, CONTRACTOR SHALL STOP DRILLING, PATCH THE HOLE, AND FIND A NEW LOCATION FOR MECHANICAL ANCHOR.

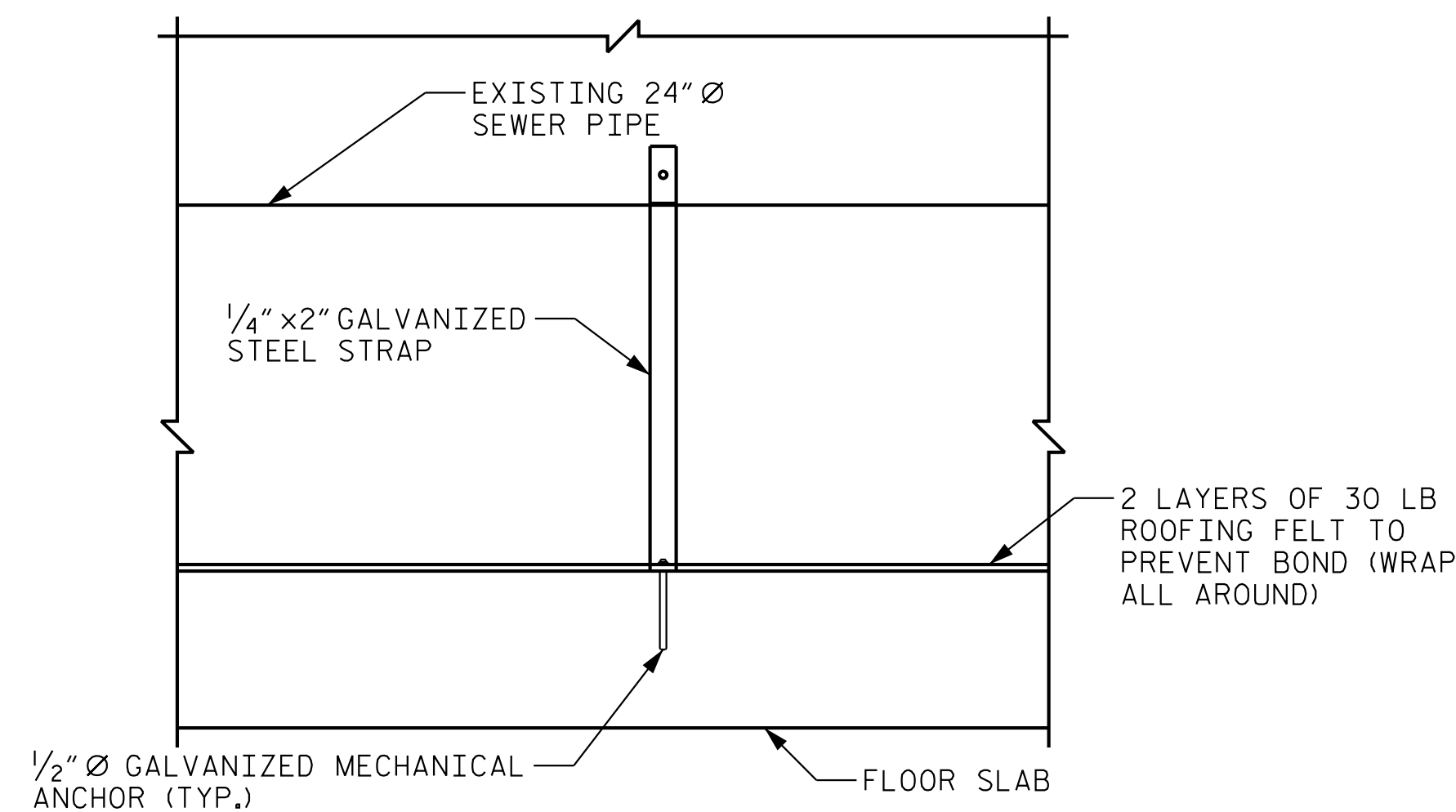


RIGHT ANGLE SECTION OF BARREL

(LOOKING DOWNSTREAM)  
THERE ARE 158 "C" BARS IN SECTION OF BARREL



PIPE ATTACHMENT DETAIL  
(LOOKING DOWNSTREAM)



SECTION A-A

PROJECT NO. U-2579BA  
FORSYTH COUNTY  
STATION: 45+66.21 -Y4-

SHEET 2 OF 8

STATE OF NORTH CAROLINA  
DEPARTMENT OF TRANSPORTATION  
RALEIGH

TRIPLE 8 FT. X 9 FT.  
CONCRETE BOX CULVERT  
45° SKEW



Drawn By: Jeffrey C. Wilson 1/13/2020  
CD040384

**Kimley»Horn**  
421 Fayetteville Street, Suite 600  
Raleigh, NC 27601-1772  
Phone (919) 677-2000 NC LICENSE # F-0102

This document, together with the concepts and designs presented herein, is an integral part of the contract. It is to be read in conjunction with the contract documents. No part of this document shall be reproduced or transmitted in any form or by any means, electronic or mechanical, including photocopying, recording, or by any information storage and retrieval system, without written authorization and approval by Kimley-Horn and Associates, Inc. shall be without liability to Kimley-Horn and Associates, Inc.

**DOCUMENT NOT CONSIDERED FINAL  
UNLESS ALL SIGNATURES COMPLETED**

REVISIONS						SHEET NO.
NO.	BY:	DATE:	NO.	BY:	DATE:	C-2
1			3			TOTAL SHEETS
2			4			8

DRAWN BY: J.I.KIMBLE DATE: 1/20  
CHECKED BY: C.T.POOLE DATE: 1/20  
DESIGN ENGINEER OF RECORD: J.C.WILSON DATE: 1/20