

**Kimley Horn**  
 421 FAYETTEVILLE STREET, SUITE 600  
 RALEIGH, NC 27601

PROJECT REFERENCE NO. U-2579BA  
 SHEET NO. STREAM-12

HYDRAULICS ENGINEER

RIGHT-OF-WAY REV.  
 CONST. REV.

DocuSigned by:  
 Jennifer Mumpkin  
 3/3/2020

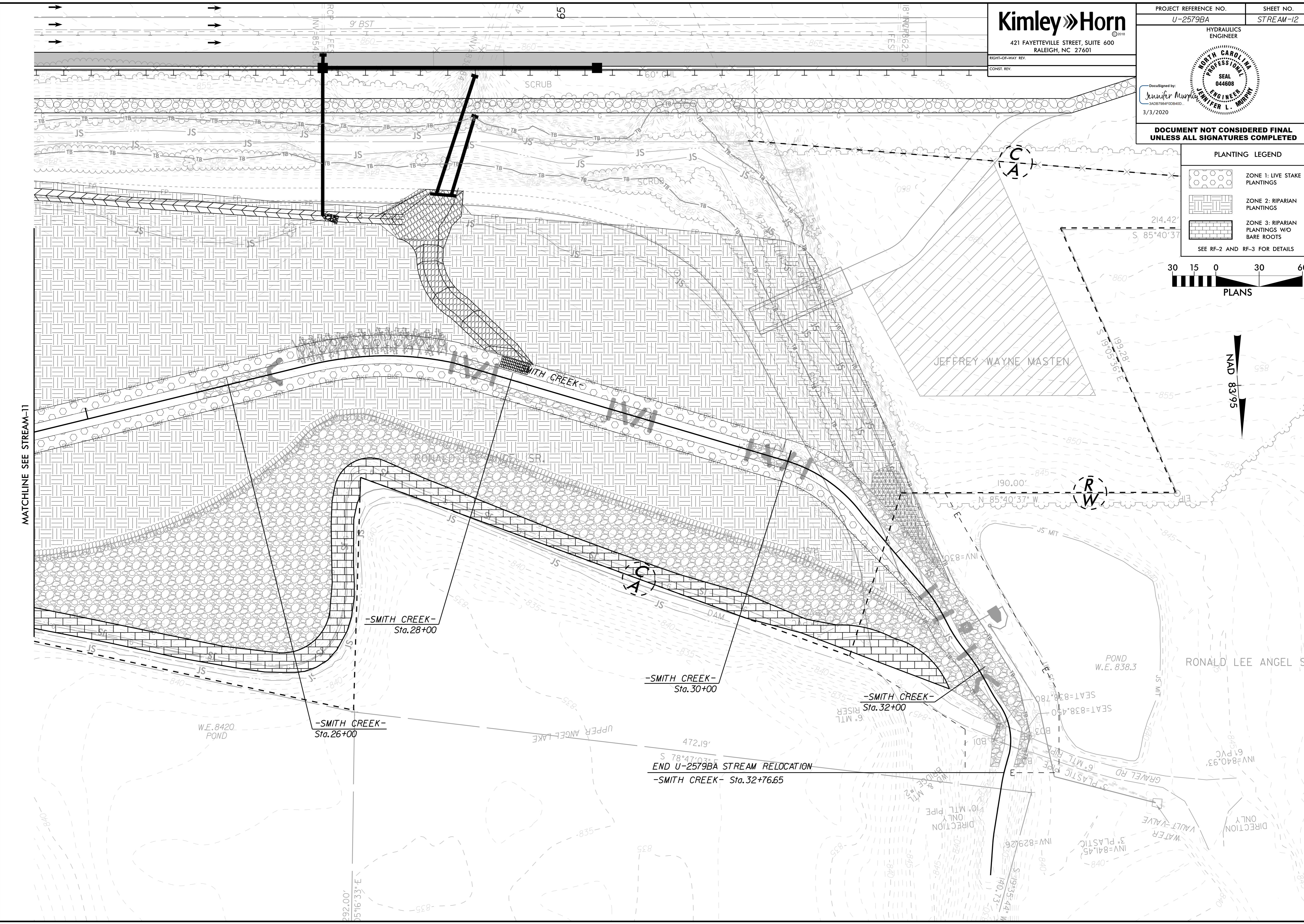
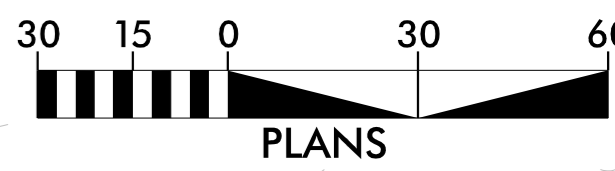
**SEAL**  
 044608  
 JENNIFER L. MUMPKIN

**DOCUMENT NOT CONSIDERED FINAL UNLESS ALL SIGNATURES COMPLETED**

**PLANTING LEGEND**

	ZONE 1: LIVE STAKE PLANTINGS
	ZONE 2: RIPARIAN PLANTINGS
	ZONE 3: RIPARIAN PLANTINGS W/O BARE ROOTS

SEE RF-2 AND RF-3 FOR DETAILS



REVISIONS

MATCHLINE SEE STREAM-11

-SMITH CREEK-  
Sta. 28+00

-SMITH CREEK-  
Sta. 30+00

-SMITH CREEK-  
Sta. 32+00

-SMITH CREEK-  
Sta. 26+00

END U-2579BA STREAM RELOCATION  
-SMITH CREEK- Sta. 32+76.65

POND  
W.E. 842.0

POND  
W.E. 838.3

RONALD LEE ANGEL SP

WATER  
VAULT VALVE

DIRECTION  
ONLY