

5/14/19

DETAIL STREAM INTAKE VAULT (SEE SPECIAL PROVISIONS)

Kimley»Horn

421 FAYETTEVILLE STREET, SUITE 600
RALEIGH, NC 27601

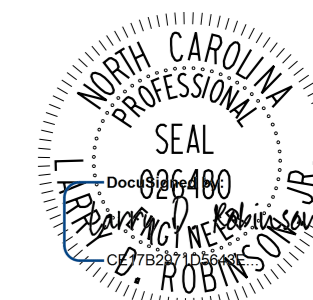
RIGHT-OF-WAY REV.
CONST. REV.

PROJECT REFERENCE NO. SHEET NO.

U-2579BA STREAM - 2C-4

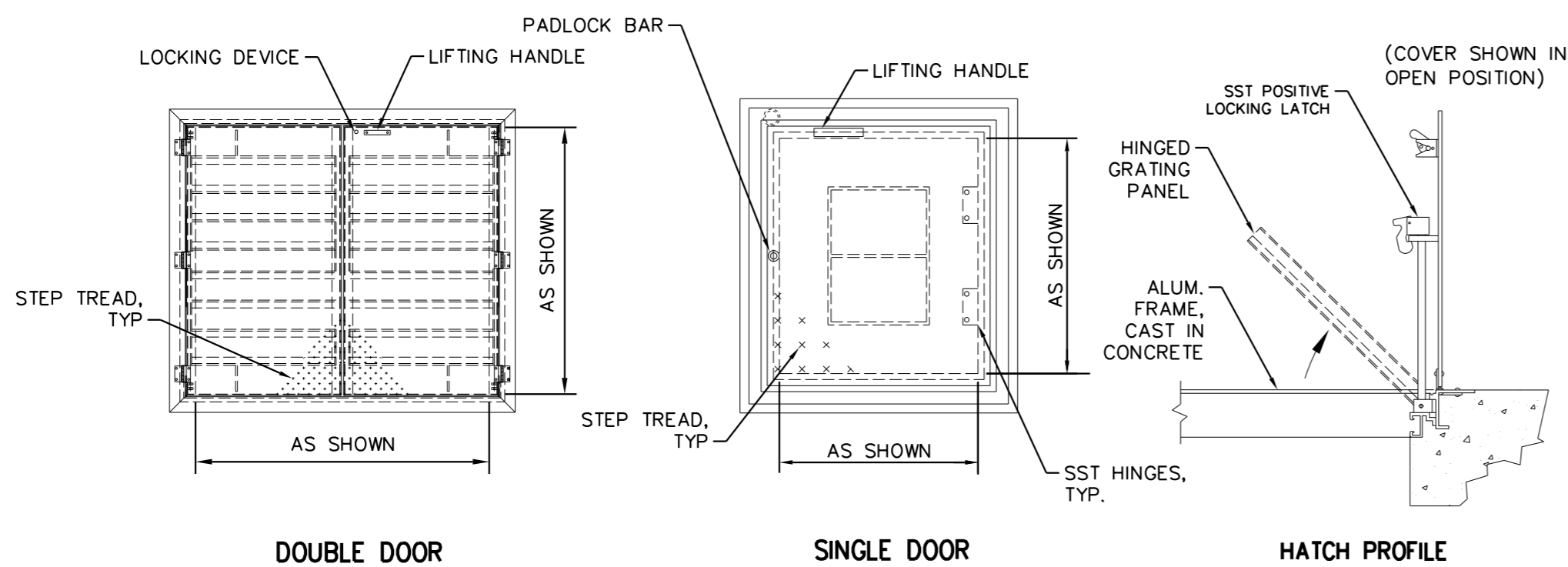
R/W SHEET NO.

HYDRAULIC DESIGN
ENGINEER



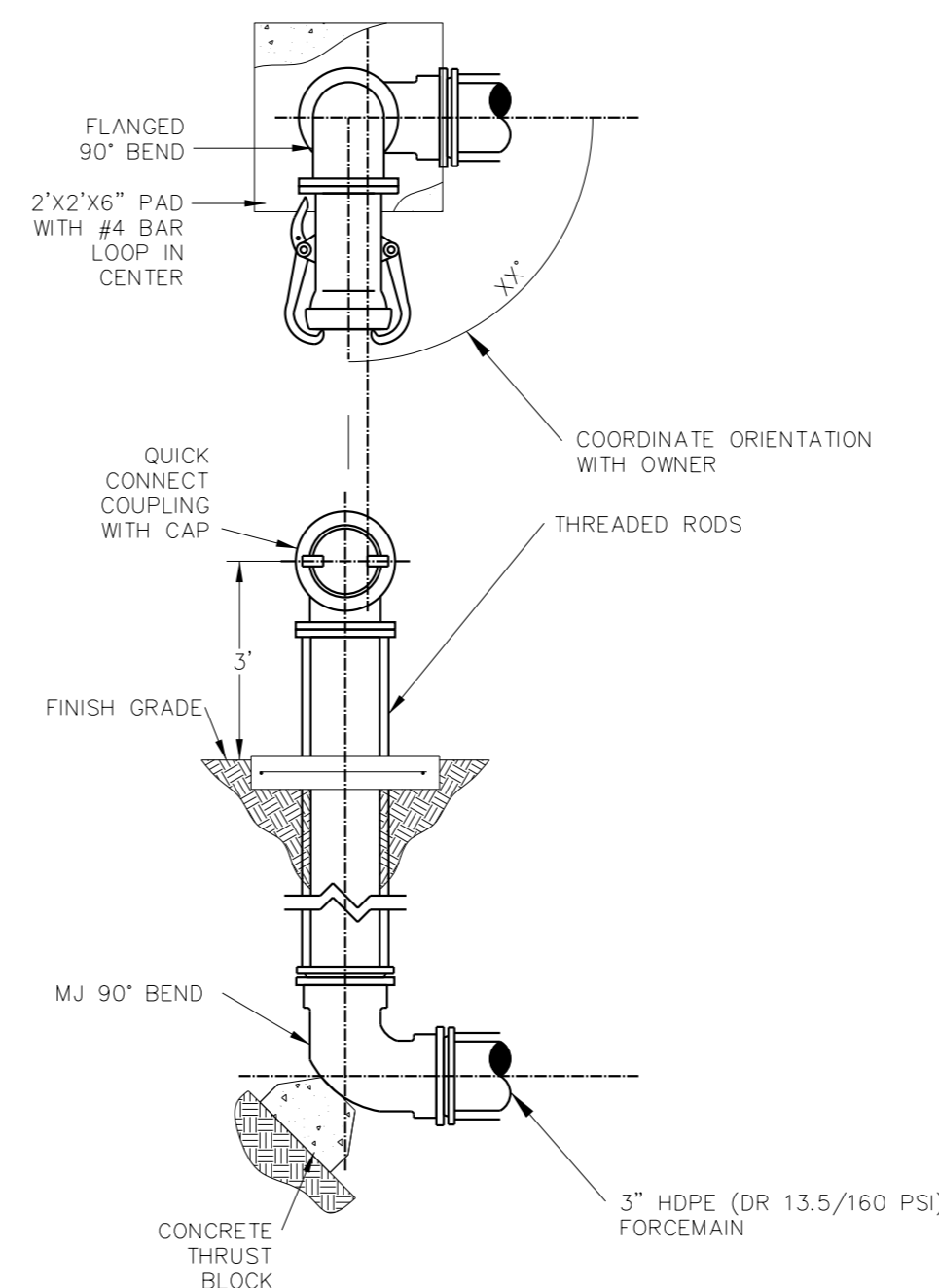
3/3/2020

**DOCUMENT NOT CONSIDERED FINAL
UNLESS ALL SIGNATURES COMPLETED**



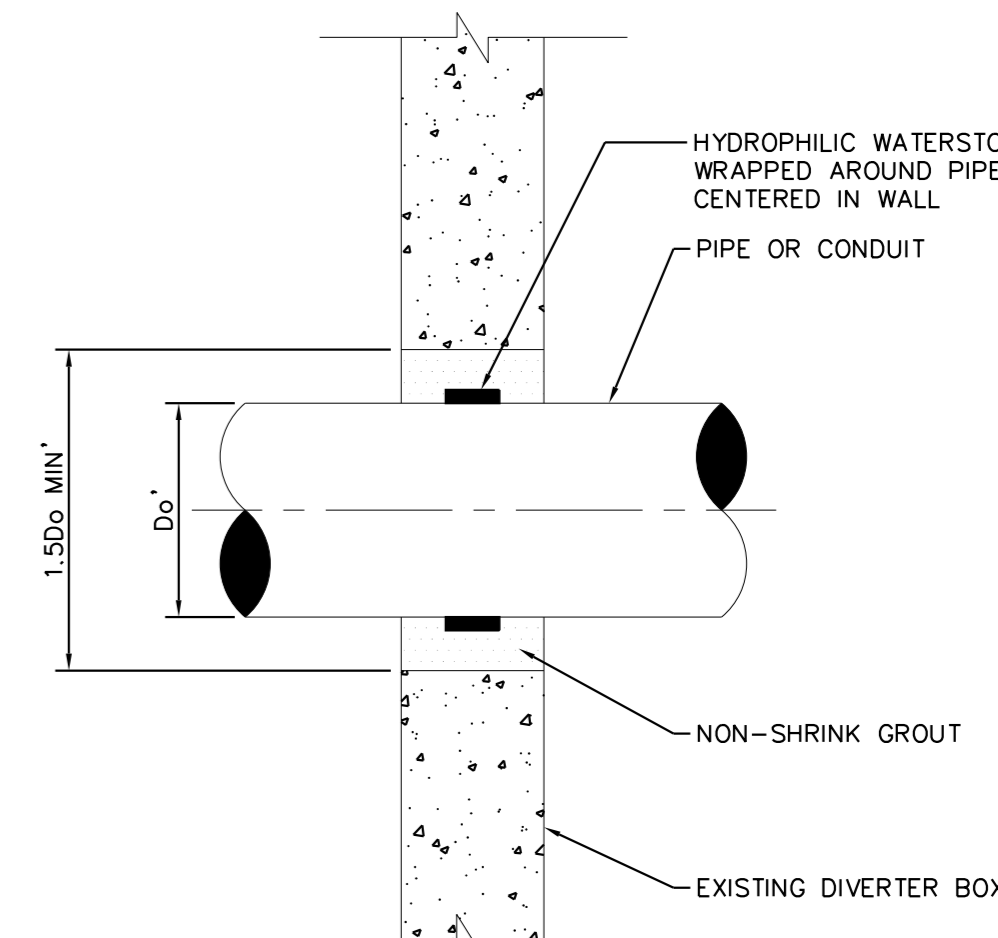
- NOTES:**
1. ALL HATCH COMPONENTS SHALL BE SST OR ALUMINUM.
 2. HATCHES SHALL BE WATERPROOF AND RATED FOR 300PSF.
 3. EXPOSED HARDWARE SHALL BE TAMPER-PROOF.
 4. FALL PROTECTION SHALL BE IN ACCORDANCE WITH OSHA REQUIREMENTS.
 5. CONTRACTOR SHALL CONFIRM THAT DIMENSIONS ARE ADEQUATE FOR INSTALLATION, REMOVAL, AND MAINTENANCE OF EQUIPMENT WITH EQUIPMENT MANUFACTURERS.

1
ACCESS HATCH
SCALE: N.T.S.



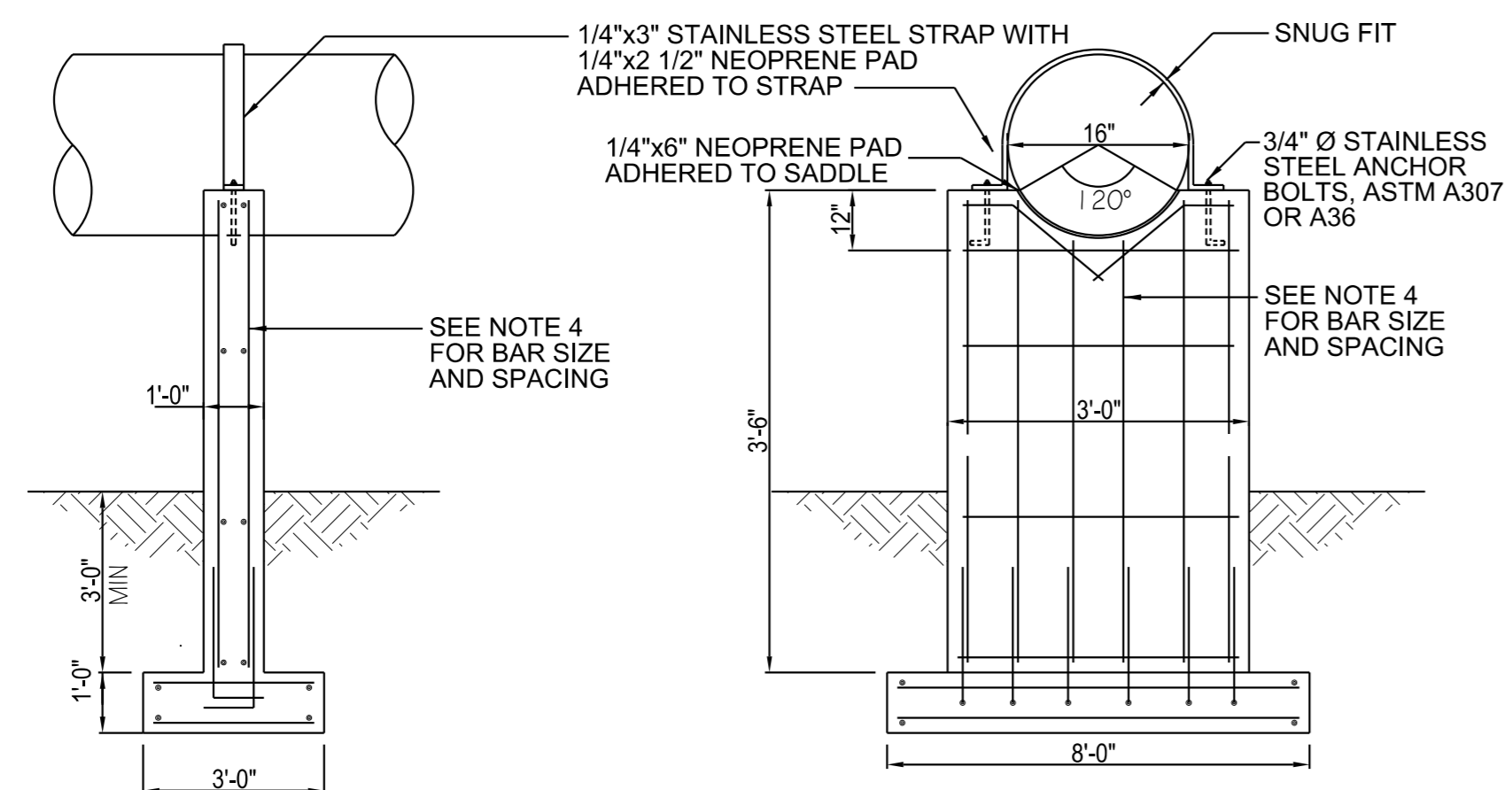
- NOTE:**
- 1.) SHOWN FOR INFORMATION ONLY, TO BE INSTALLED BY OTHERS.
 - 2.) ALL PIPE AND FITTINGS SHALL BE THE SAME DIAMETER AS FORCE MAIN UNLESS NOTED.
 - 3.) QUICK CONNECT FITTING SHALL BE BAUER/BALL AND SOCKET TYPE FOR 6" AND LARGER. CAMLOCK STYLE SHALL BE USED FOR 4" AND SMALLER. CONTRACTOR SHALL CONFIRM QUICK CONNECTION TYPE AND ORIENTATION WITH OWNER.

2
EMERGENCY BYPASS PUMPING DISCHARGE CONNECTION
SCALE: N.T.S.



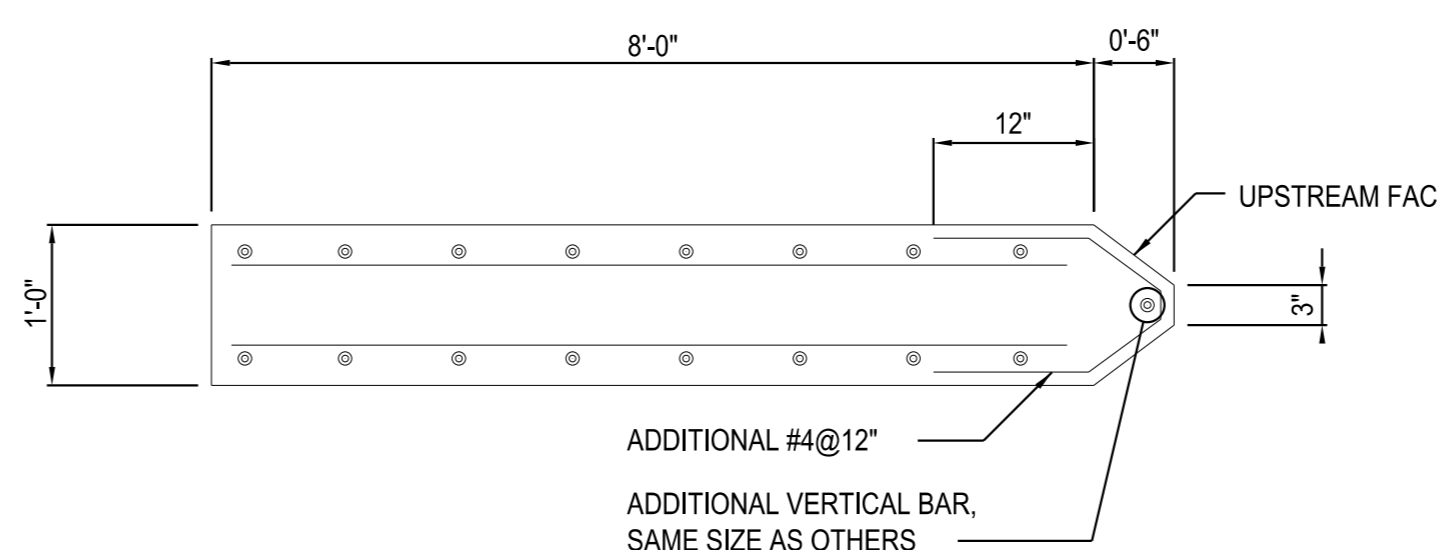
- NOTE:**
- 1.) SHOWN FOR INFORMATION ONLY, TO BE INSTALLED BY OTHERS.

3
PERMANENT PIPE PENETRATION
SCALE: N.T.S.

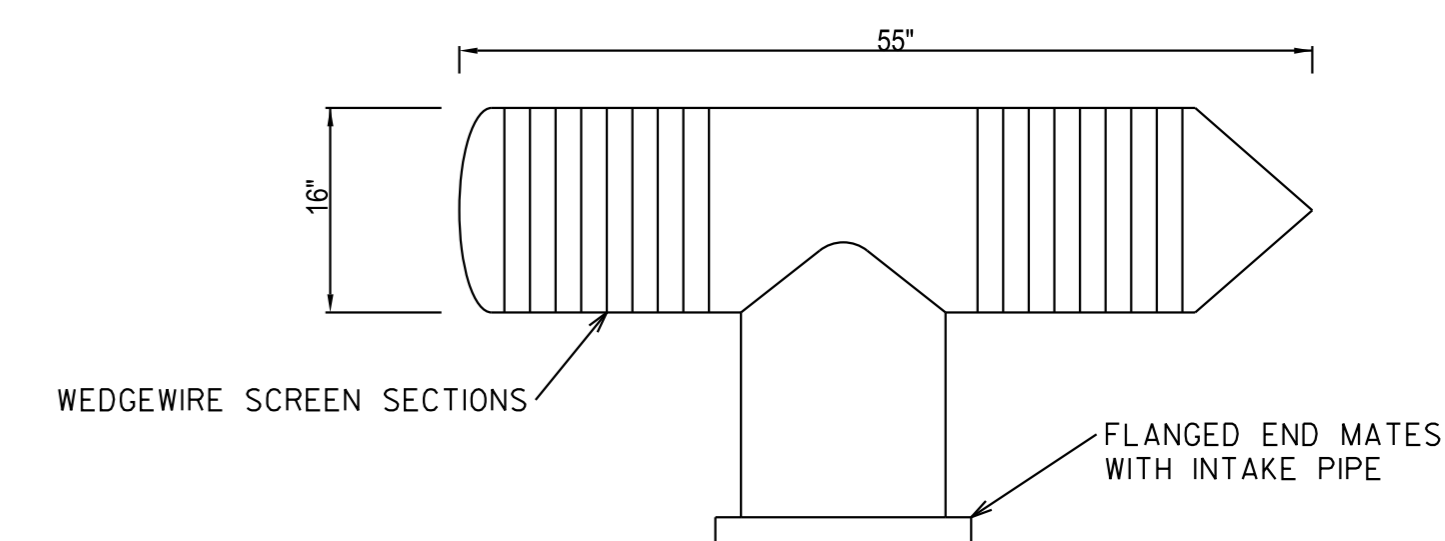


4
CONCRETE PIER DETAIL
SCALE: N.T.S.

- NOTES:**
1. SHALLOW FOUNDATION DESIGN SHOWN ON THIS DETAIL IS BASED ON THE FOLLOWING PARAMETERS:
ALLOWABLE SOIL BEARING CAPACITY = 2000 PSF
CONCRETE COMPRESSIVE STRENGTH = 4000 PSI
GRADE 60 REINFORCING STEEL
MAXIMUM STREAM VELOCITY = 10 FT/SEC
MAXIMUM SUPPORT HEIGHT (H) = 12'-0"
IF FIELD CONDITIONS REQUIRE ANY DEVIATION FROM THESE PARAMETERS, THE FOUNDATION DESIGN SHALL BE REVIEWED BY THE ENGINEER.
 2. IF SUBGRADE AT LOCATION OF SUPPORTS IS DEEMED UNABLE TO WITHSTAND 2000 PSF BEARING PRESSURE, NOTIFY ENGINEER.
 3. IF BEDROCK IS ENCOUNTERED WHICH WILL PREVENT 3-FEET MINIMUM COVER OVER FOOTING, DOWELS SHALL BE DRILLED INTO BEDROCK PRIOR TO PLACING FOUNDATION. NOTIFY ENGINEER.
 4. TWELVE-INCH AND FOURTEEN-INCH THICK PIERS AND FOOTINGS SHALL BE REINFORCED WITH #5 BARS AT 12 INCHES OC IN EACH DIRECTION ON EACH FACE. EIGHTEEN-INCH WIDE PIERS AND FOOTINGS SHALL BE REINFORCED WITH #7 BARS AT 12 INCHES OC IN EACH DIRECTION ON EACH FACE.
 5. SHOP DRAWINGS ARE REQUIRED FOR THE STREAM INTAKE VAULT DESIGN AND COMPONENTS



5
CONCRETE PIER DETAIL PLAN
SCALE: N.T.S.



- NOTES:**
1. INTAKE SCREEN SHALL BE T-16 CONCORD SCREEN OR EQUAL AS APPROVED BY ENGINEER

6
INTAKE SCREEN DETAIL
SCALE: N.T.S.