

8/17/99

CONSTRUCTION SEQUENCE:

- 1) PLACE ALL EROSION CONTROL STRUCTURES ACCORDING TO PLANS.
- 2) CONSTRUCT PROPOSED SMITH CREEK RELOCATION IN THE DRY. THIS INCLUDES ALL MATTING AND PLANTINGS AS APPROPRIATE PER PLANTING SEASON. IF PLANTING OCCURS DURING PLANTING SEASON, INSTALL PERMANENT PLANTINGS. OTHERWISE, DELAY FINAL PLANTING UNTIL PLANTING SEASON. VEGETATION SHOULD BE ESTABLISHED BEFORE PROCEEDING.
- 3) REMOVE ALL FINAL EROSION CONTROL STRUCTURES NORTH OF THE PROPOSED STREAM BEFORE DIVERTING FLOW.
- 4) DIVERT LIVE SMITH CREEK INTO PROPOSED STREAM RELOCATION. INSTALL CHANNEL PLUG AT UPSTREAM END OF THE RELOCATION.
- 5) EXTEND ROADWAY DRAINAGE NETWORK AND FILL IN SMITH CREEK AS NECESSARY TO COMPLETE ROADWAY EMBANKMENT AND GRADING.

NOTE: USE 1.0 FT WEIR HEIGHT FOR TEMPORARY ROCK SILT CHECKS TYPE - A THAT ARE NOT LABELED.

NOTE: PLACE TEMPORARY ROCK SEDIMENT DAMS TYPE - B AND TEMPORARY ROCK SILT CHECKS TYPE - A AT DRAINAGE OUTLETS.

CLEARING AND GRUBBING EROSION CONTROL FOR CONSTRUCTION SHEET 6

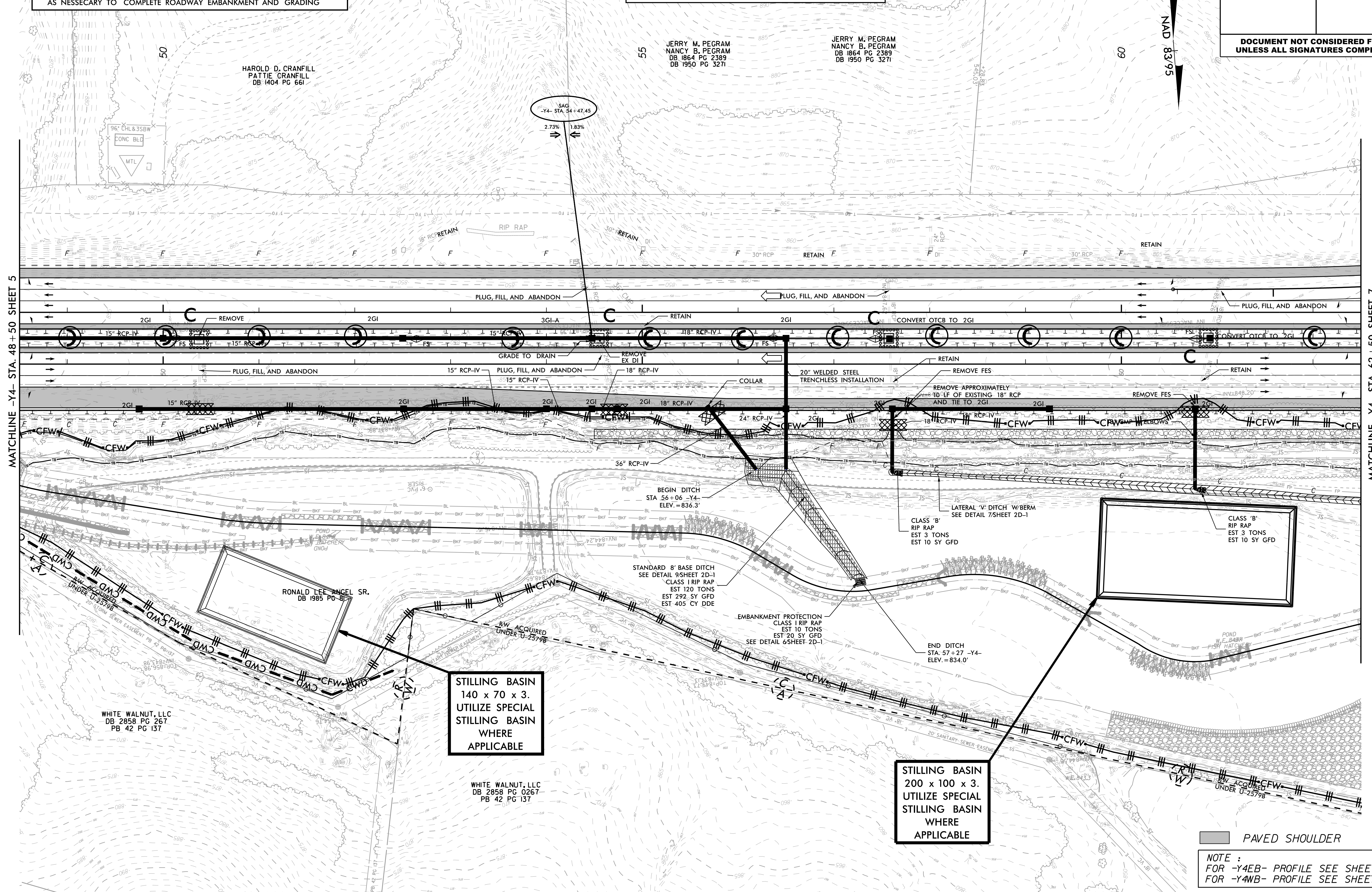
Kimley » Horn
 421 FAYETTEVILLE STREET, SUITE 600
 RALEIGH, NC 27601

PROJECT REFERENCE NO. U-2579BA	SHEET NO. EC-6/CONST.6
R/W SHEET NO.	HYDRAULICS ENGINEER
ROADWAY DESIGN ENGINEER	

DOCUMENT NOT CONSIDERED FINAL UNLESS ALL SIGNATURES COMPLETED

NOTE: SEE SHEET EC-2D FOR PUMPING OPERATION DETAIL. USE WHERE APPLICABLE TO TIE PROPOSED CHANNEL TO SMITH CREEK.

NOTE: UTILIZE TEMPORARY SEDIMENT BASIN OR SPECIAL STILLING BASIN(S) AS STILLING BASIN WHERE APPLICABLE.



MATCHLINE -Y4- STA. 48+50 SHEET 5

MATCHLINE -Y4- STA. 62+50 SHEET 7

REVISIONS

STILLING BASIN
 140 x 70 x 3.
 UTILIZE SPECIAL STILLING BASIN WHERE APPLICABLE

STILLING BASIN
 200 x 100 x 3.
 UTILIZE SPECIAL STILLING BASIN WHERE APPLICABLE

PAVED SHOULDER

NOTE :
 FOR -Y4EB- PROFILE SEE SHEET 9
 FOR -Y4WB- PROFILE SEE SHEET 11