

8/17/99

Kimley»Horn

421 FAYETTEVILLE STREET, SUITE 600
RALEIGH, NC 27601

RIGHT-OF-WAY REV.
CONST. REV.

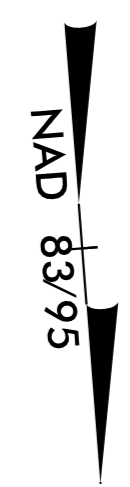
PROJECT REFERENCE NO. U-2579BA	SHEET NO. 6
RW SHEET NO.	
ROADWAY DESIGN ENGINEER	HYDRAULICS ENGINEER
2/24/2020	2/24/2020

**DOCUMENT NOT CONSIDERED FINAL
UNLESS ALL SIGNATURES COMPLETED**

-Y4RPBD-
 PIs Sta 84+71.9
 Os = 2' 27' 32.6"
 Ls = 2000'
 LT = 133.35'
 ST = 66.68'

JERRY M. PEGRAM
 NANCY B. PEGRAM
 DB 1864 PG 2389
 DB 1950 PG 3271

NFPS INC.
 DB 2973 PG 0542

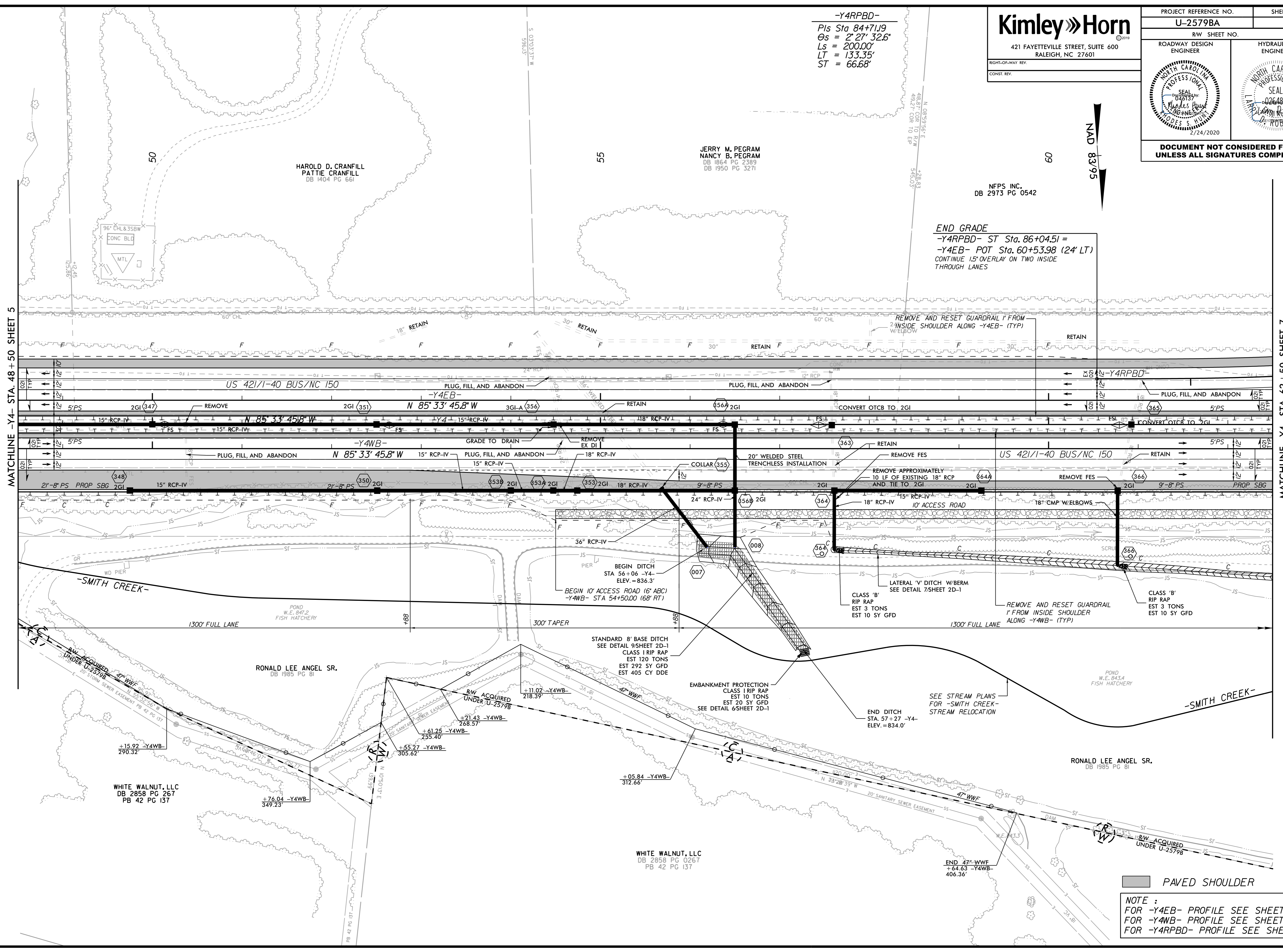


END GRADE
 -Y4RPBD- ST Sta. 86+04.51 =
 -Y4EB- POT Sta. 60+53.98 (24' LT)
 CONTINUE 15' OVERLAY ON TWO INSIDE
 THROUGH LANES

MATCHLINE -Y4- STA. 48+50 SHEET 5

MATCHLINE -Y4- STA. 62+50 SHEET 7

REVISIONS



PAVED SHOULDER

NOTE :
 FOR -Y4EB- PROFILE SEE SHEET 9
 FOR -Y4WB- PROFILE SEE SHEET 11
 FOR -Y4RPBD- PROFILE SEE SHEET 12