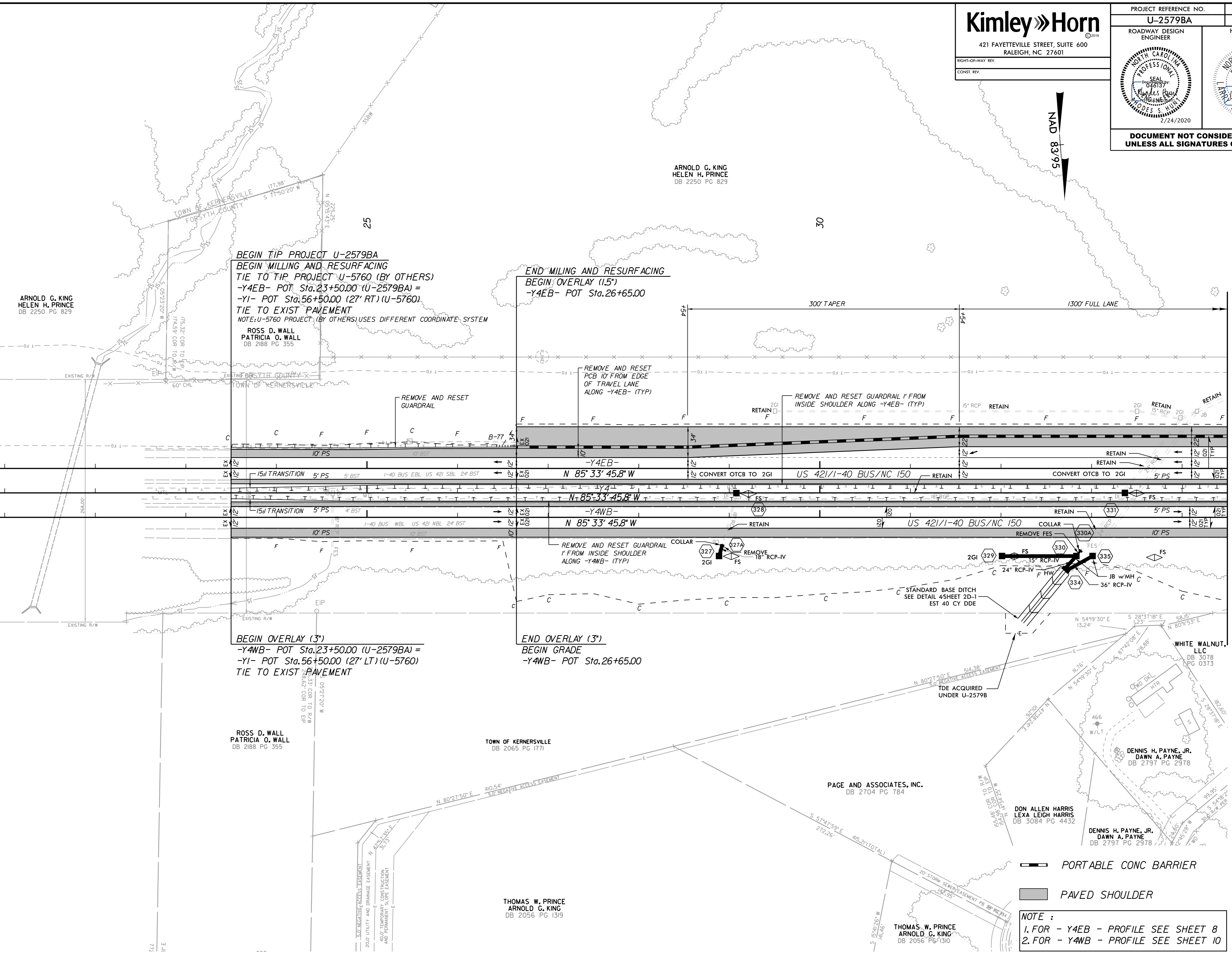


**Kimley»Horn**  
 421 FAYETTEVILLE STREET, SUITE 600  
 RALEIGH, NC 27601

PROJECT REFERENCE NO. <b>U-2579BA</b>	SHEET NO. <b>4</b>
ROADWAY DESIGN ENGINEER	HYDRAULICS ENGINEER
2/24/2020	2/24/2020
<b>DOCUMENT NOT CONSIDERED FINAL UNLESS ALL SIGNATURES COMPLETED</b>	

NAD  
83.95



REVISIONS

MATCHLINE -Y4- STA. 34+50 SHEET 5

- PORTABLE CONC BARRIER
- PAVED SHOULDER

NOTE :  
 1. FOR - Y4EB - PROFILE SEE SHEET 8  
 2. FOR - Y4WB - PROFILE SEE SHEET 10

5/14/99

2/24/2020

ARNOLD G. KING  
HELEN H. PRINCE  
DB 2250 PG 829

**BEGIN TIP PROJECT U-2579BA**  
**BEGIN MILLING AND RESURFACING**  
 TIE TO TIP PROJECT U-5760 (BY OTHERS)  
 -Y4EB- POT Sta.23+50.00 (U-2579BA) =  
 -Y1- POT Sta.56+50.00 (27' RT) (U-5760)  
 TIE TO EXIST PAVEMENT  
 NOTE: U-5760 PROJECT (BY OTHERS) USES DIFFERENT COORDINATE SYSTEM  
 ROSS D. WALL  
 PATRICIA O. WALL  
 DB 2188 PG 355

**END MILING AND RESURFACING**  
**BEGIN OVERLAY (1.5\')**  
 -Y4EB- POT Sta.26+65.00

**BEGIN OVERLAY (3\')**  
 -Y4WB- POT Sta.23+50.00 (U-2579BA) =  
 -Y1- POT Sta.56+50.00 (27' LT) (U-5760)  
 TIE TO EXIST PAVEMENT

**END OVERLAY (3\')**  
**BEGIN GRADE**  
 -Y4WB- POT Sta.26+65.00

ROSS D. WALL  
PATRICIA O. WALL  
DB 2188 PG 355

TOWN OF KERNERSVILLE  
DB 2065 PG 1771

THOMAS W. PRINCE  
ARNOLD G. KING  
DB 2056 PG 1319

PAGE AND ASSOCIATES, INC.  
DB 2704 PG 784

THOMAS W. PRINCE  
ARNOLD G. KING  
DB 2056 PG 1310

WHITE WALNUT, LLC  
DB 3078 PG 0373

DENNIS H. PAYNE, JR.  
DAWN A. PAYNE  
DB 2797 PG 2978

DENNIS H. PAYNE, JR.  
DAWN A. PAYNE  
DB 2797 PG 2978

DON ALLEN HARRIS  
LEXA LEIGH HARRIS  
DB 3084 PG 4432