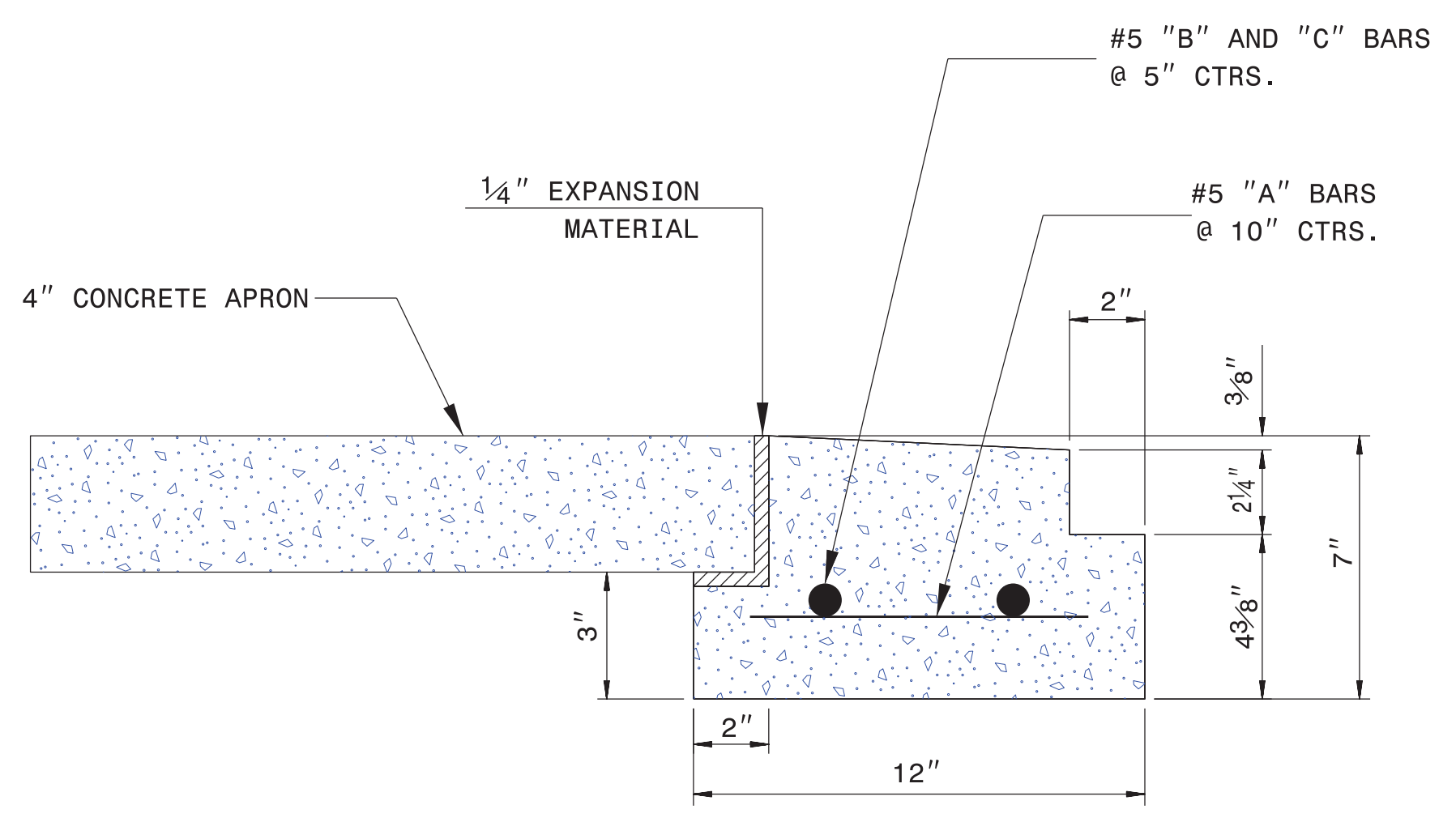


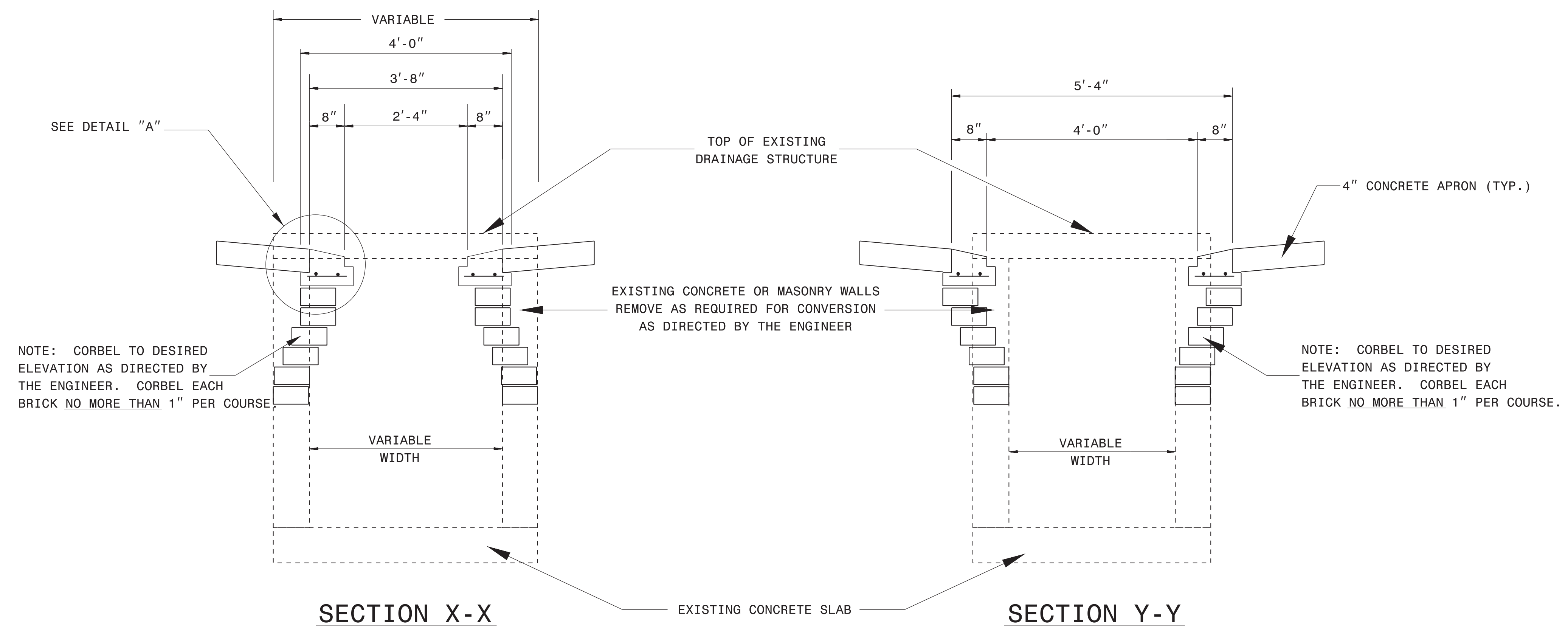
NOTES:
 - USE CLASS 'B' CONCRETE.
 - DIMENSIONS MAY BE ADJUSTED TO SUIT FIELD CONDITIONS AS DIRECTED BY THE ENGINEER.



BILL OF MATERIAL

BAR	NO.	SIZE	LENGTH	WEIGHT
A	16	5	9"	13
B	4	5	3'-5"	14
C	4	5	5'-1"	21
TOTAL REINF. STEEL (lbs.)				48
BRICK MASONRY (per ft. ht.) (cu. yds.)				0.38
CLASS "B" CONC. (cu. yds.)				0.23

FRAME AND GRATES	STD. NO.
PREFERRED:	840.22
	840.24
ACCEPTABLE:	840.20
	840.29
	840.33



NOTE: CORBEL TO DESIRED ELEVATION AS DIRECTED BY THE ENGINEER. CORBEL EACH BRICK NO MORE THAN 1" PER COURSE.

NOTE: CORBEL TO DESIRED ELEVATION AS DIRECTED BY THE ENGINEER. CORBEL EACH BRICK NO MORE THAN 1" PER COURSE.



CONTRACT STANDARDS AND DEVELOPMENT UNIT
 Office 919-707-6950 FAX 919-250-4119

CONVERT EXISTING OPEN THROAT CB TO MEDIAN 2-GI

ORIGINAL BY: L.M.LEWIS	DATE: 3/97
MODIFIED BY: E.E.WARD	DATE: 7/03
CHECKED BY:	DATE:
FILE SPEC.: s:\usr\details\stand\cbto2gi.dgn	

5/14/99
 \$\$\$\$SYTIME\$\$\$\$
 \$\$\$\$C:\P\DWG\CON\$\$\$\$
 \$\$\$\$JUSERNAME\$\$\$\$