

09/08/99

See Sheet 1A For Index of Sheets
See Sheet 1B For Symbols Sheet
See Sheet 1C For Survey Control Sheet

T.I.P. NO.	SHEET NO.
R-5797	UO-1

NOTE:
ALL UTILITY WORK SHOWN ON THIS SHEET WILL BE DONE BY OTHERS. NO PAYMENT WILL BE MADE TO THE CONTRACTOR FOR UTILITY WORK SHOWN ON THIS SHEET.

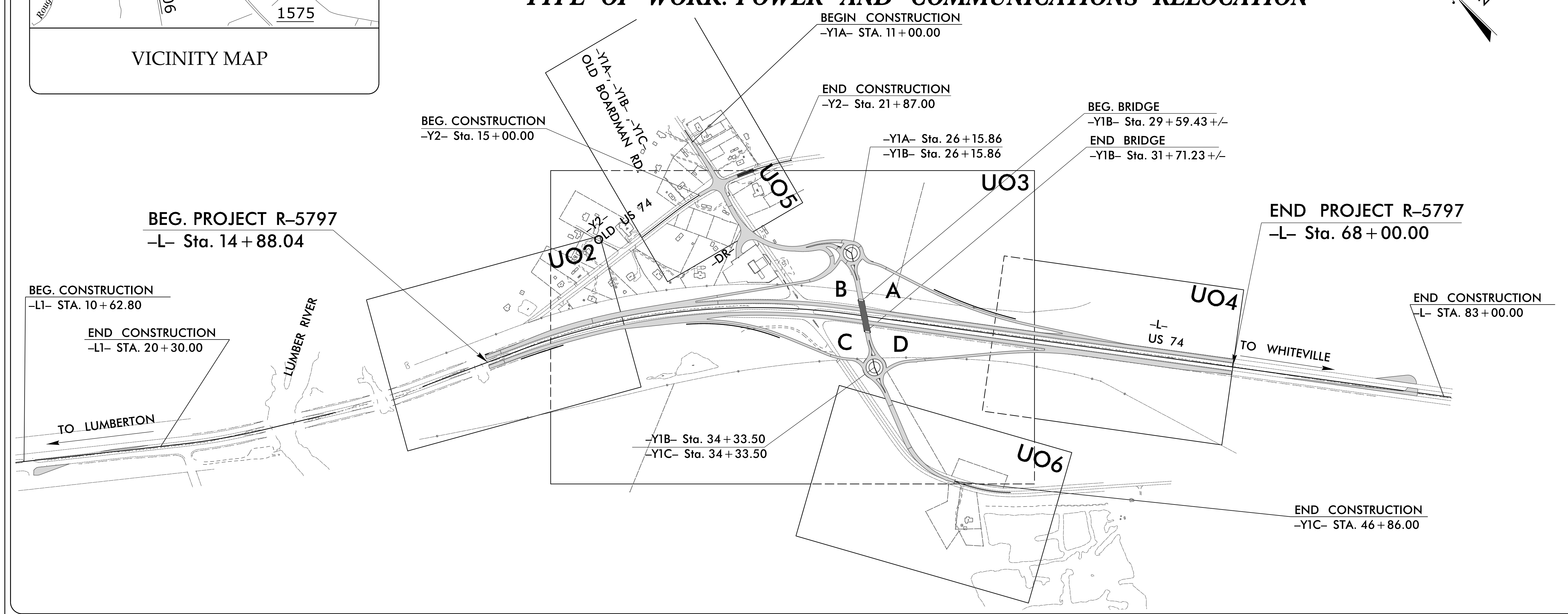
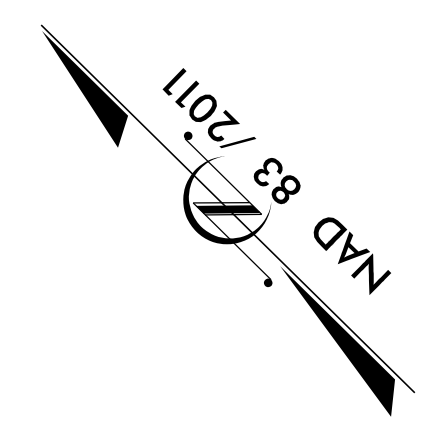
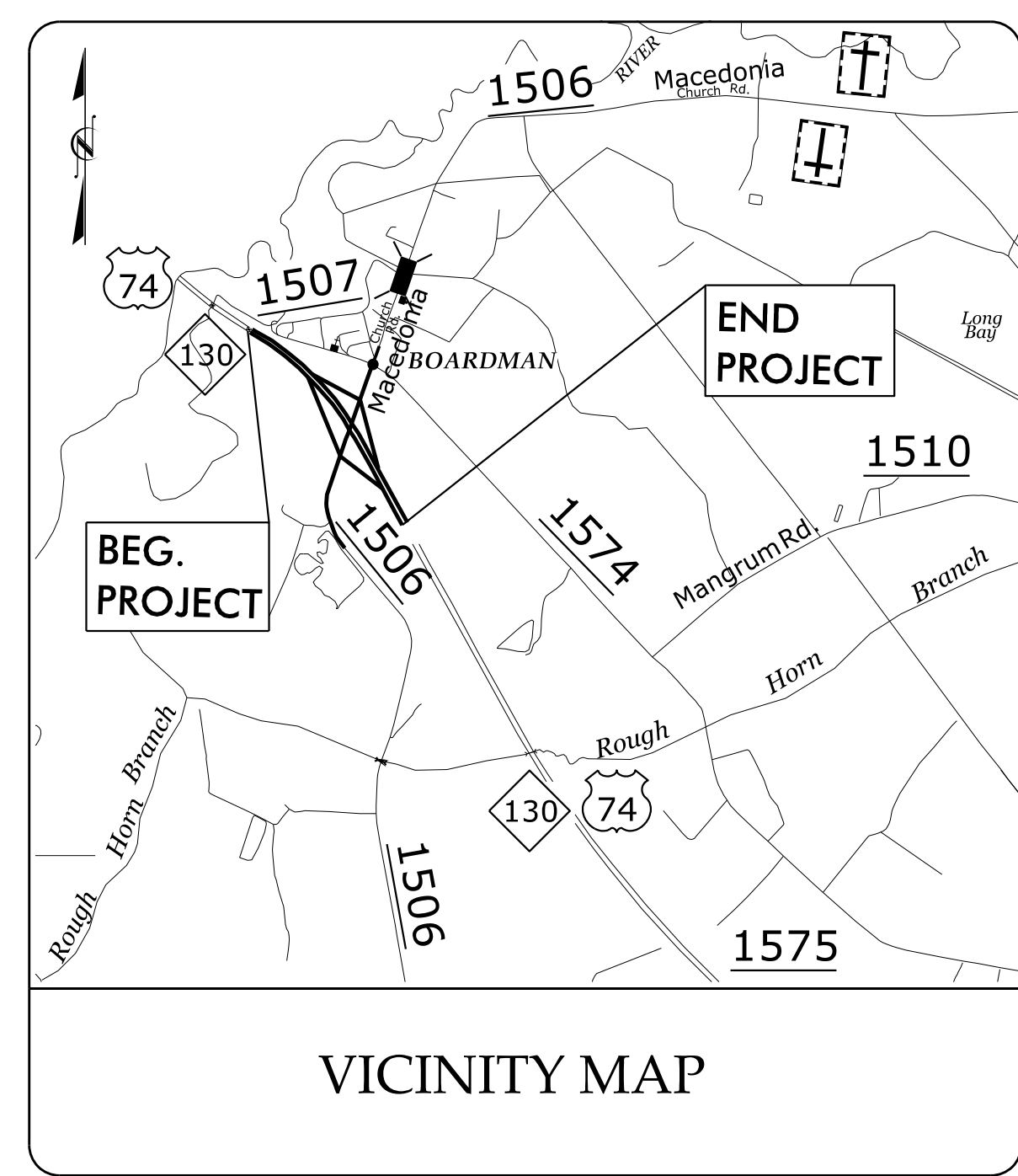
TIP PROJECT: R-5797

STATE OF NORTH CAROLINA
DIVISION OF HIGHWAYS

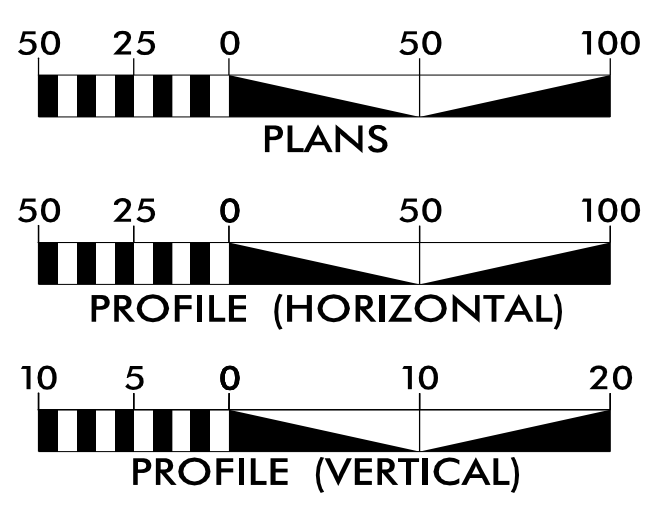
**UTILITIES BY OTHERS PLANS
COLUMBUS COUNTY**

LOCATION: US 74 AT SR 1506 (OLD BOARDMAN RD/
MACEDONIA CHURCH RD.)

TYPE OF WORK: POWER AND COMMUNICATIONS RELOCATION



GRAPHIC SCALES



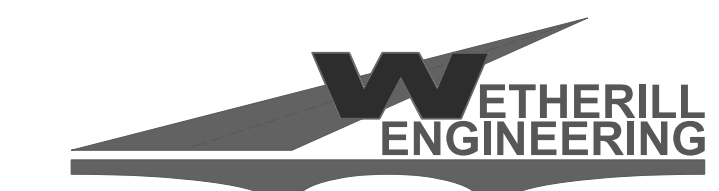
INDEX OF SHEETS

SHEET NO.:	DESCRIPTION:
UO-1	TITLE SHEET
UO-2 THRU UO-6	UBO PLAN SHEETS

UTILITY OWNERS WITH CONFLICTS

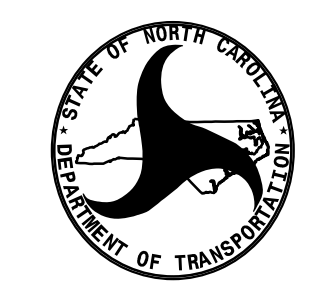
- (A) POWER - BRUNSWICK EMC
- (B) COMMUNICATION - AT&T
- (C) COMMUNICATION - MCNC
- (D) COMMUNICATION - DUKE NET

PREPARED IN THE OFFICE OF:



1223 Jones Franklin Rd. Raleigh, N.C. 27606
License No. F-0377
Bus: 919.851.8077 Fax: 919.851.8107

John D. Schriener, PLS PROJECT UTILITY COORDINATOR



DIVISION OF HIGHWAYS
DIVISION 6

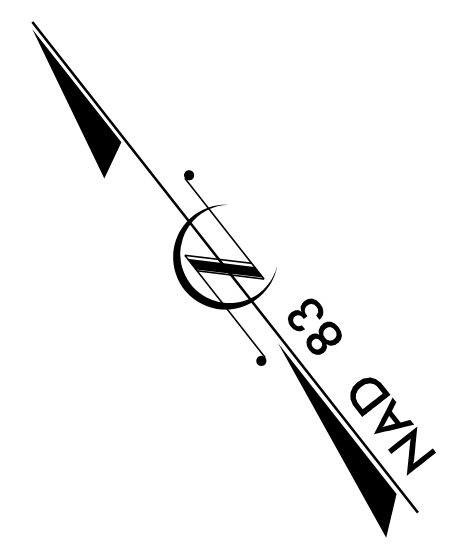
549 Transportation Drive
Fayetteville, NC, 28301

Rick Handlin Division Utility Coordinator

\$\$\$\$\$ SYSTEMS \$\$\$
\$\$\$\$\$ DGN \$\$\$
\$\$\$\$\$ USER NAME \$\$\$

UTILITIES BY OTHERS

ALL PROPOSED UTILITY WORK SHOWN ON THIS SHEET WILL BE DONE BY OTHERS. NO PAYMENT WILL BE MADE TO THE CONTRACTOR FOR PROPOSED UTILITY WORK SHOWN ON THIS SHEET.



SUE WALTERS
 DB 526 PG 492

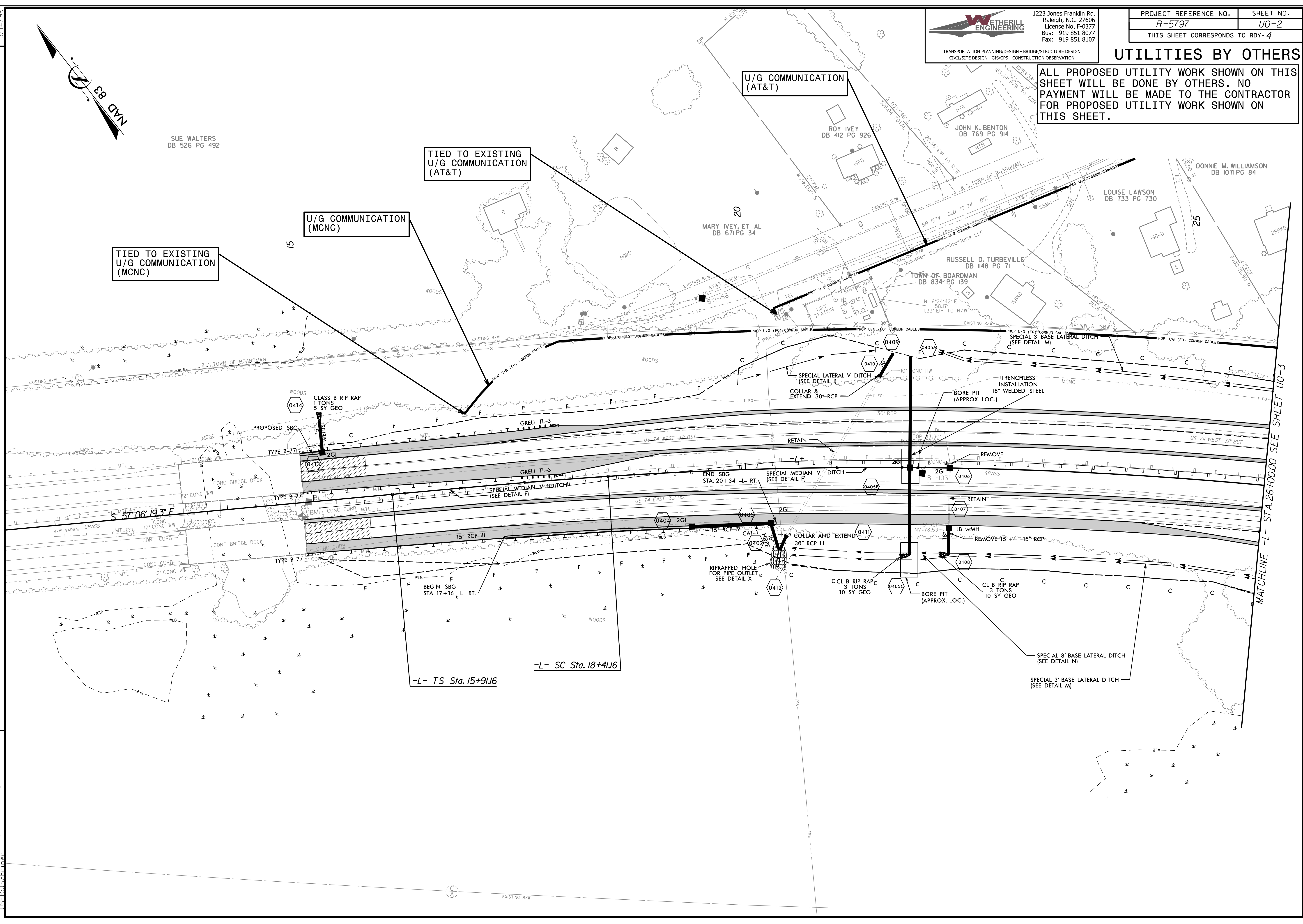
TIED TO EXISTING
 U/G COMMUNICATION
 (AT&T)

U/G COMMUNICATION
 (MCNC)

TIED TO EXISTING
 U/G COMMUNICATION
 (MCNC)

U/G COMMUNICATION
 (AT&T)

5/14/99
 REVISIONS
 07 May 2009 ut_rdy4_u02_psh.dgn
 LISTED AS CHANGE



MATCHLINE -L- STA. 26+00.00 SEE SHEET U0-3

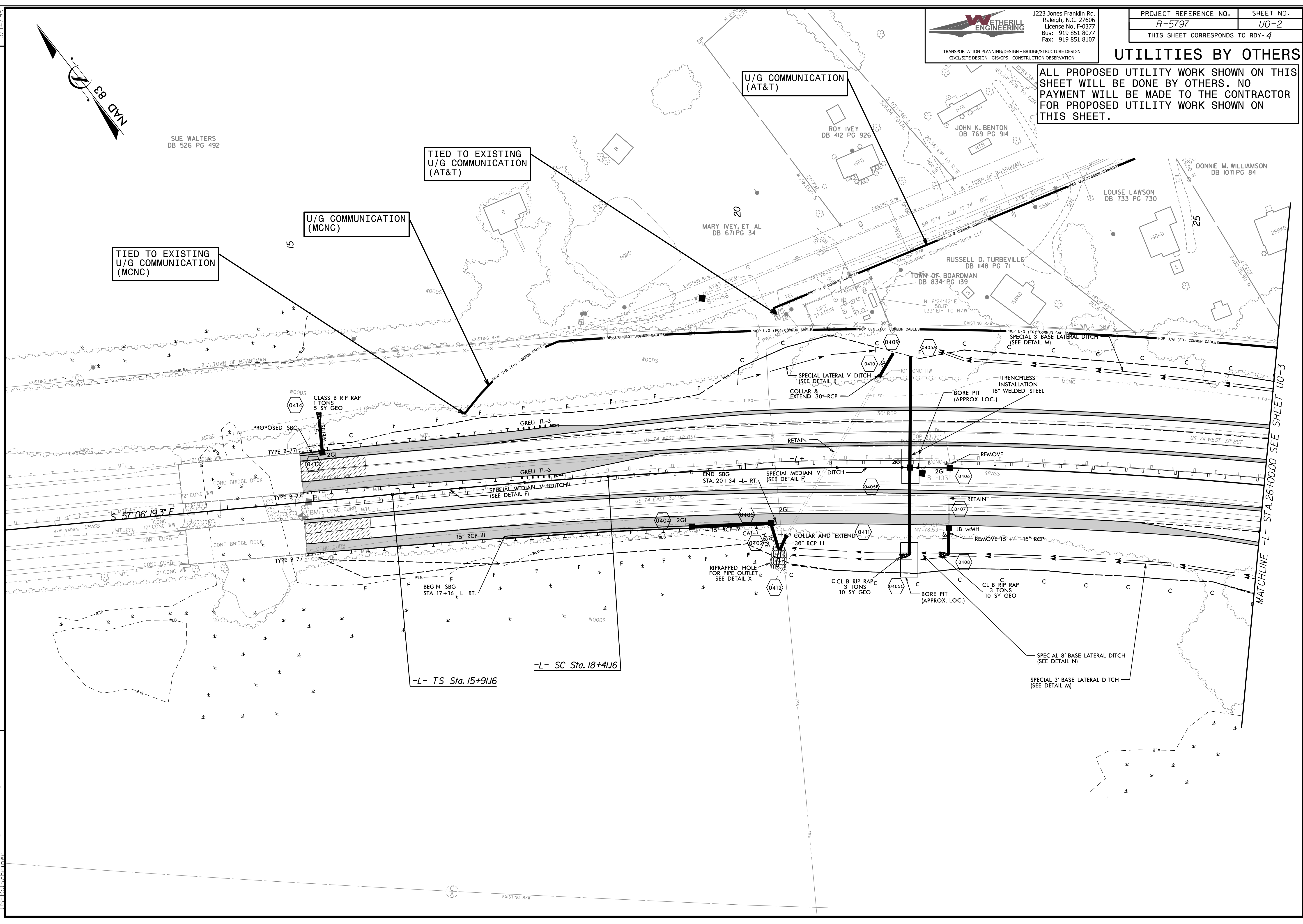
-L- TS Sta. 15+91.16

-L- SC Sta. 18+41.16

BEGIN SBG
 STA. 17+16 -L- RT.

END SBG
 STA. 20+34 -L- RT.

S 57°06'19.3" F



MATCHLINE -L- STA. 26+00.00 SEE SHEET U0-3

-L- TS Sta. 15+91.16


-L- SC Sta. 18+41.16

BEGIN SBG
 STA. 17+16 -L- RT.

END SBG
 STA. 20+34 -L- RT.

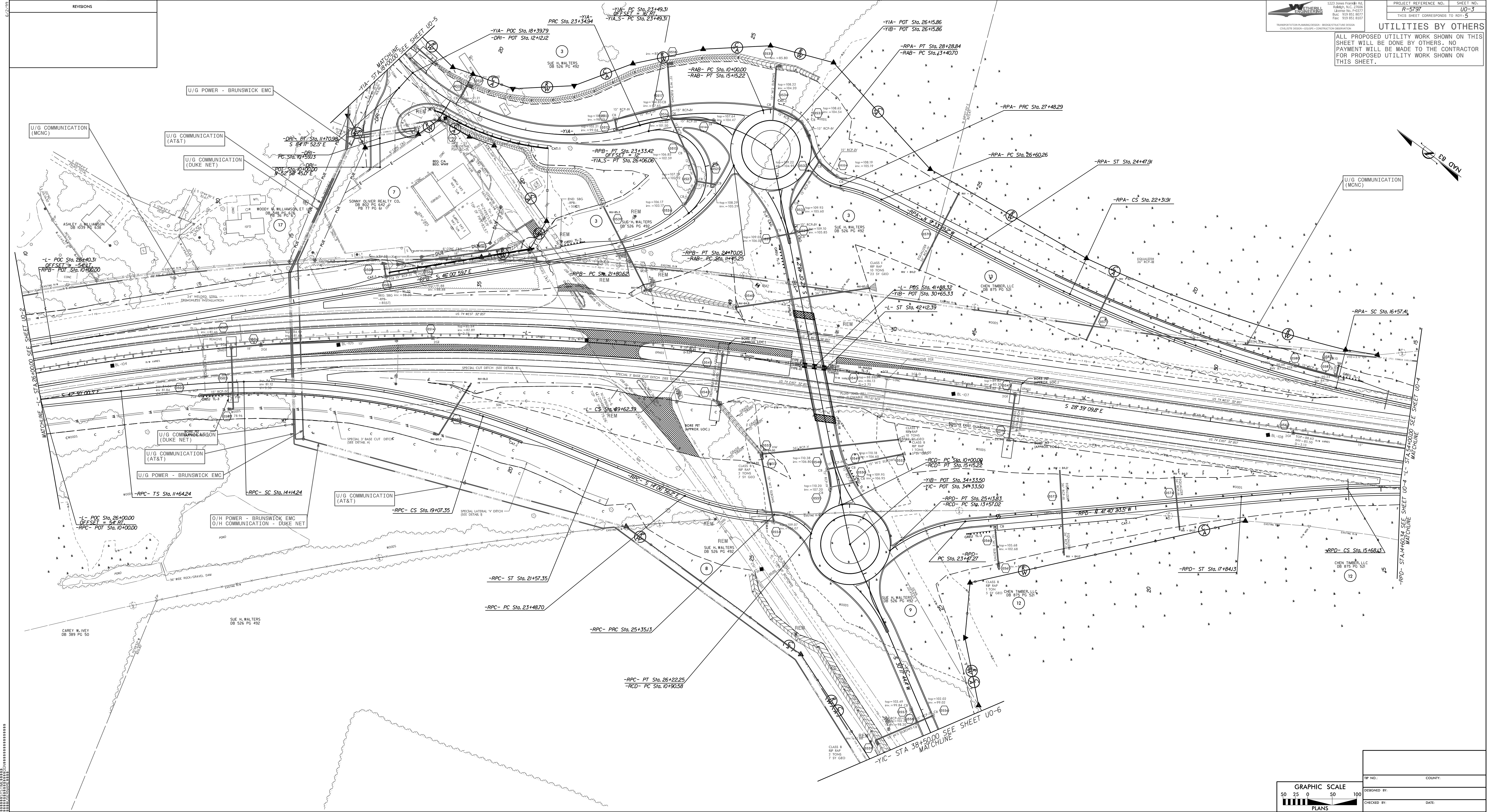
S 57°06'19.3" F

NO.	DATE	REVISIONS


 1223 JONES FARM RD
 RALEIGH, N.C. 27604
 PHONE: 919.851.4271
 FAX: 919.851.8297

PROJECT REFERENCE NO. **R-5797** SHEET NO. **U0-3**
 THIS SHEET CORRESPONDS TO PROJ. **5**

UTILITIES BY OTHERS
 ALL PROPOSED UTILITY WORK SHOWN ON THIS SHEET WILL BE DONE BY OTHERS. NO PAYMENT WILL BE MADE TO THE CONTRACTOR FOR PROPOSED UTILITY WORK SHOWN ON THIS SHEET.

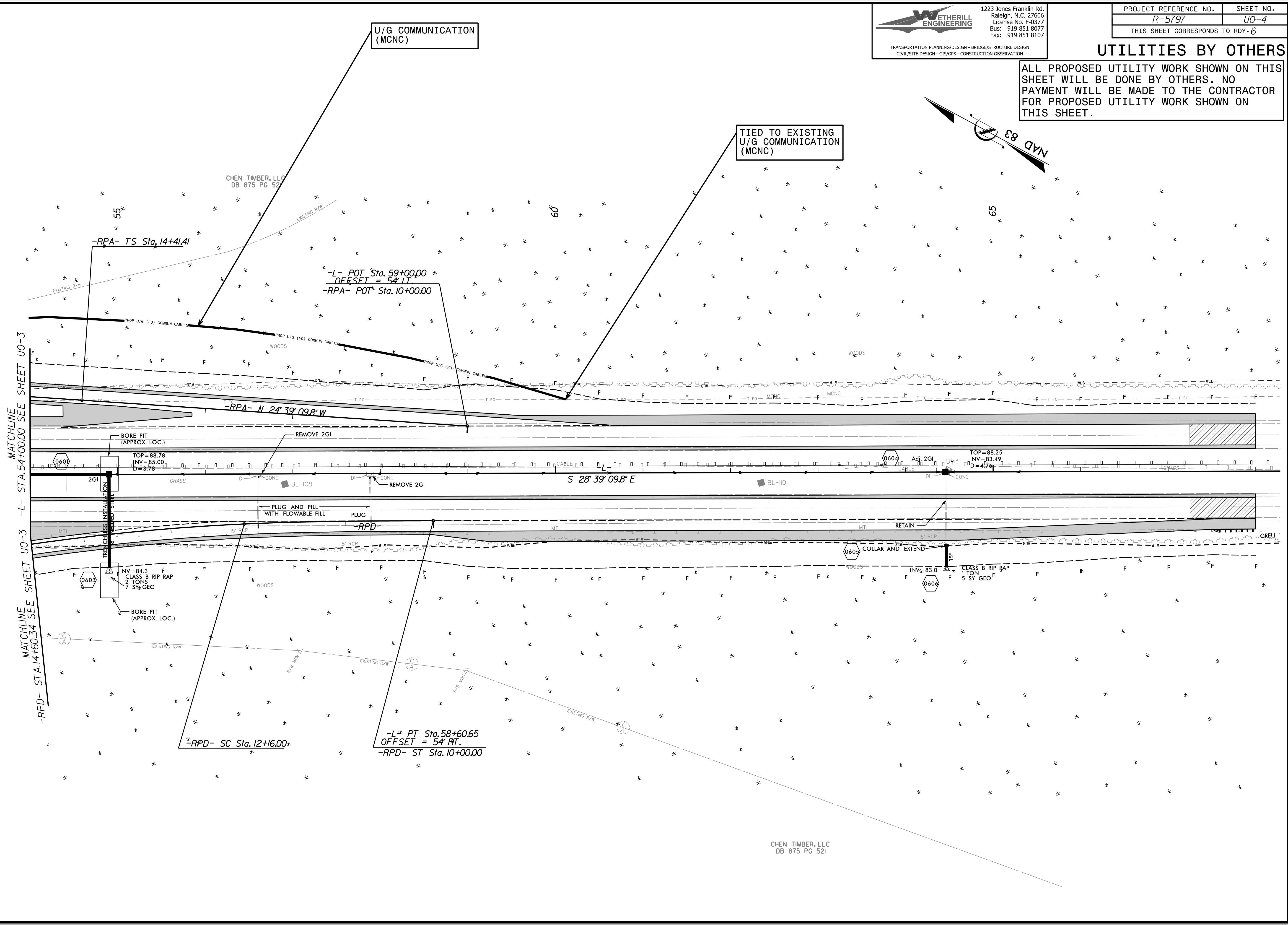


GRAPHIC SCALE
 50 25 0 50 100
 PLANS

TP NO.	COUNTY:
DESIGNED BY:	CHECKED BY:
DATE:	DATE:

UTILITIES BY OTHERS

ALL PROPOSED UTILITY WORK SHOWN ON THIS SHEET WILL BE DONE BY OTHERS. NO PAYMENT WILL BE MADE TO THE CONTRACTOR FOR PROPOSED UTILITY WORK SHOWN ON THIS SHEET.



REVISIONS

MATCHLINE STA. 54+00.00 SEE SHEET U0-3
 MATCHLINE STA. 14+60.34 SEE SHEET U0-3

07_May_2017
 LISTED AS CHEN

5/14/99

REVISIONS

07 MAY 2007 10:47:47 ut_rdy7_u05_psh.dgn
LISTED: ISCHMERE

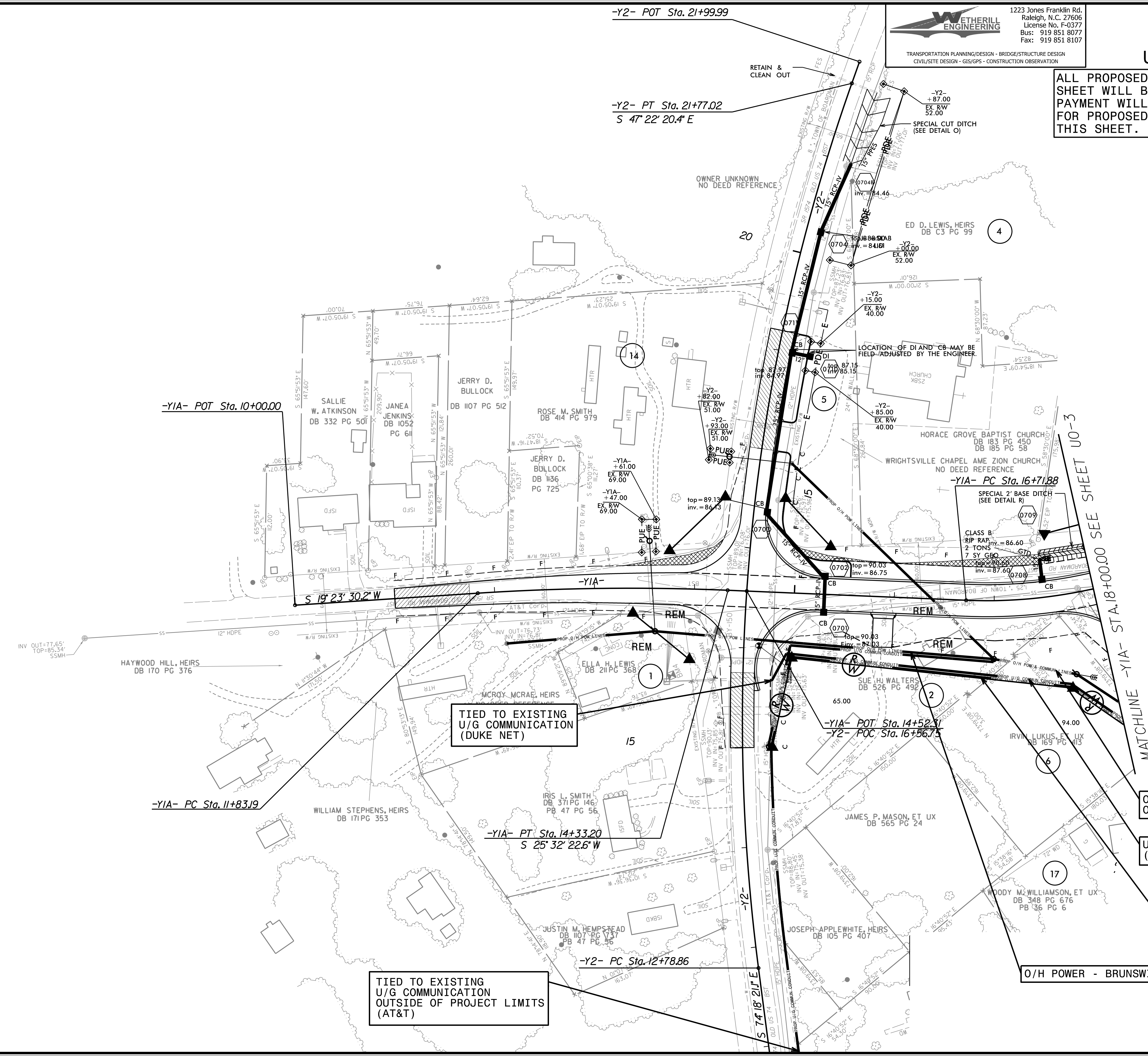
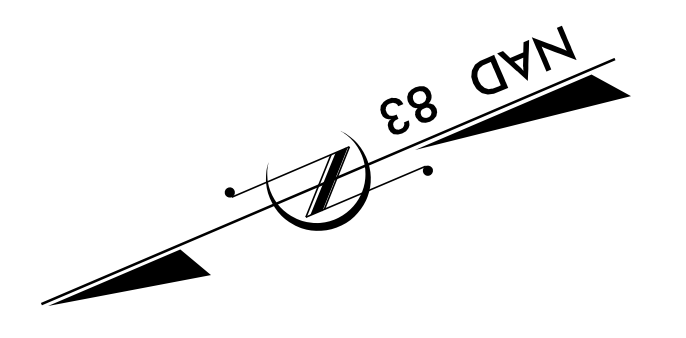
WETHERILL ENGINEERING
 1223 Jones Franklin Rd.
 Raleigh, N.C. 27606
 License No. F-0377
 Bus: 919 851 8077
 Fax: 919 851 8107

TRANSPORTATION PLANNING/DESIGN - BRIDGE/STRUCTURE DESIGN
 CIVIL/SITE DESIGN - GIS/GPS - CONSTRUCTION OBSERVATION

PROJECT REFERENCE NO.	SHEET NO.
R-5797	U0-5
THIS SHEET CORRESPONDS TO RDY-7	

UTILITIES BY OTHERS

ALL PROPOSED UTILITY WORK SHOWN ON THIS SHEET WILL BE DONE BY OTHERS. NO PAYMENT WILL BE MADE TO THE CONTRACTOR FOR PROPOSED UTILITY WORK SHOWN ON THIS SHEET.



TIED TO EXISTING
U/G COMMUNICATION
(DUKE NET)

TIED TO EXISTING
U/G COMMUNICATION
OUTSIDE OF PROJECT LIMITS
(AT&T)

O/H POWER - BRUNSWICK EMC
O/H COMMUNICATION - AT&T

U/G COMMUNICATION
(DUKE NET)

U/G COMMUNICATION
(AT&T)

O/H POWER - BRUNSWICK EMC

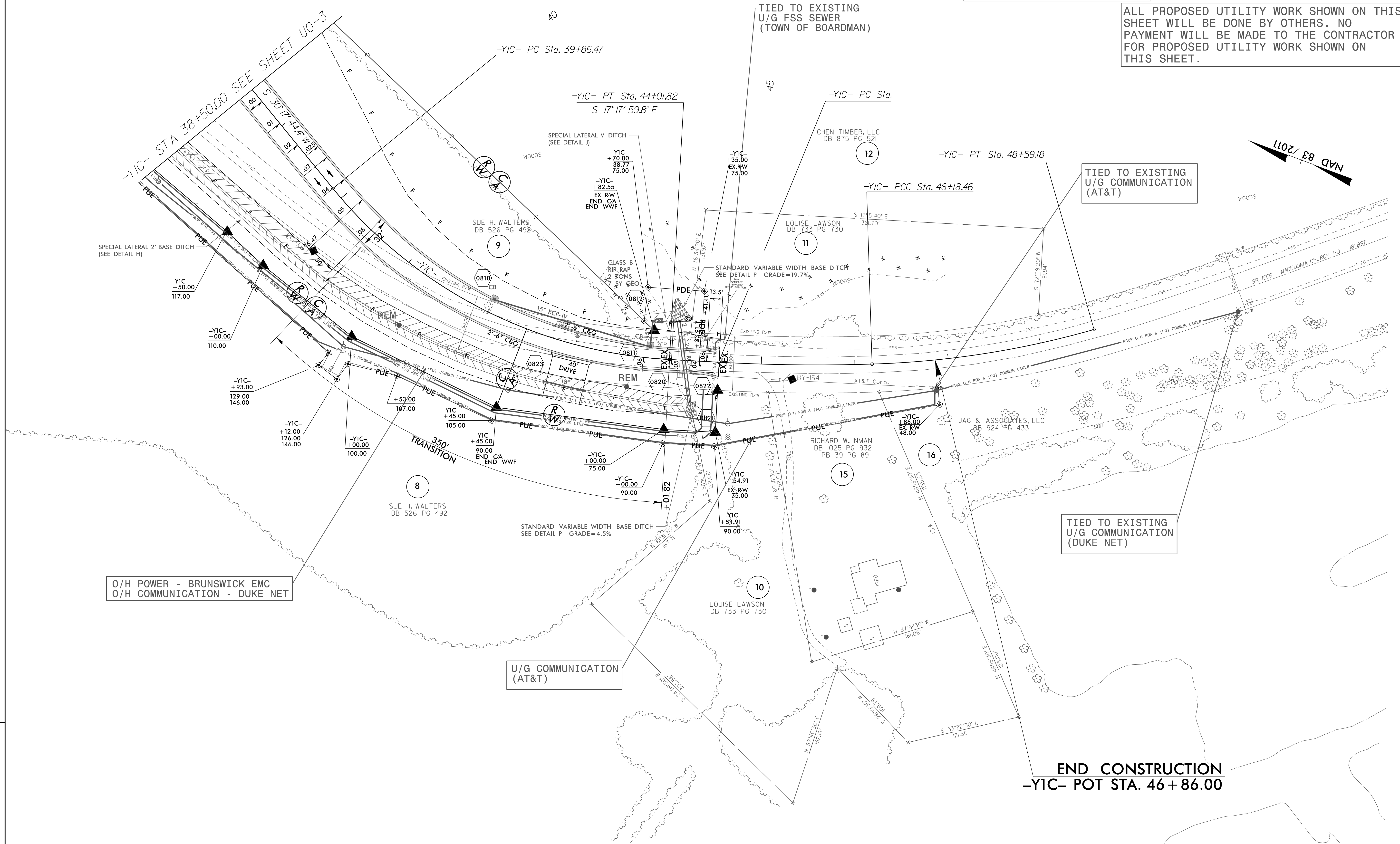
MATCHLINE -Y1A- STA. 18+00.00 SEE SHEET U0-3

UTILITIES BY OTHERS

ALL PROPOSED UTILITY WORK SHOWN ON THIS SHEET WILL BE DONE BY OTHERS. NO PAYMENT WILL BE MADE TO THE CONTRACTOR FOR PROPOSED UTILITY WORK SHOWN ON THIS SHEET.

5/14/99

REVISIONS



O/H POWER - BRUNSWICK EMC
 O/H COMMUNICATION - DUKE NET

U/G COMMUNICATION
 (AT&T)

TIED TO EXISTING
 U/G COMMUNICATION
 (DUKE NET)

TIED TO EXISTING
 U/G COMMUNICATION
 (AT&T)

TIED TO EXISTING
 U/G FSS SEWER
 (TOWN OF BOARDMAN)

END CONSTRUCTION
 -YIC- POT STA. 46+86.00

