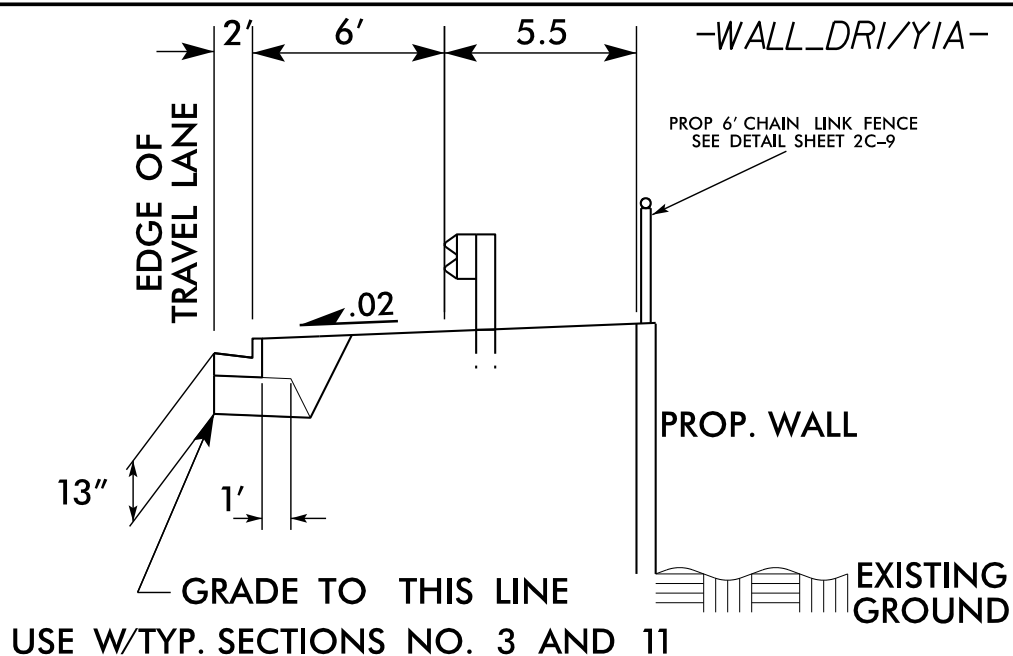
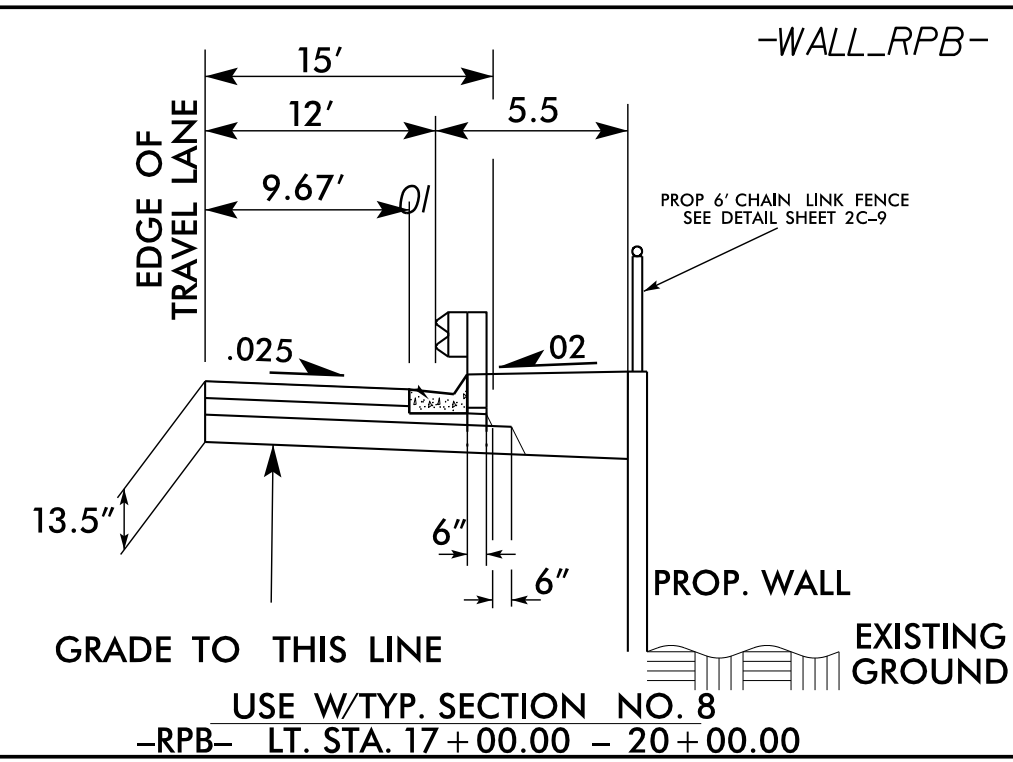


8/17/99
 20-FEB-2020 10:06:56V-9246 (WET-R-5797) Columbus Co Task 2\NR-5797-GEO-RDWY\CADD\GEO\TECH\S\te&Sub\Retaining Walls\Wall Rec-Detail\R-5797-Rdy_PSH_WALL_r.ecadgn
 17-18-19-20

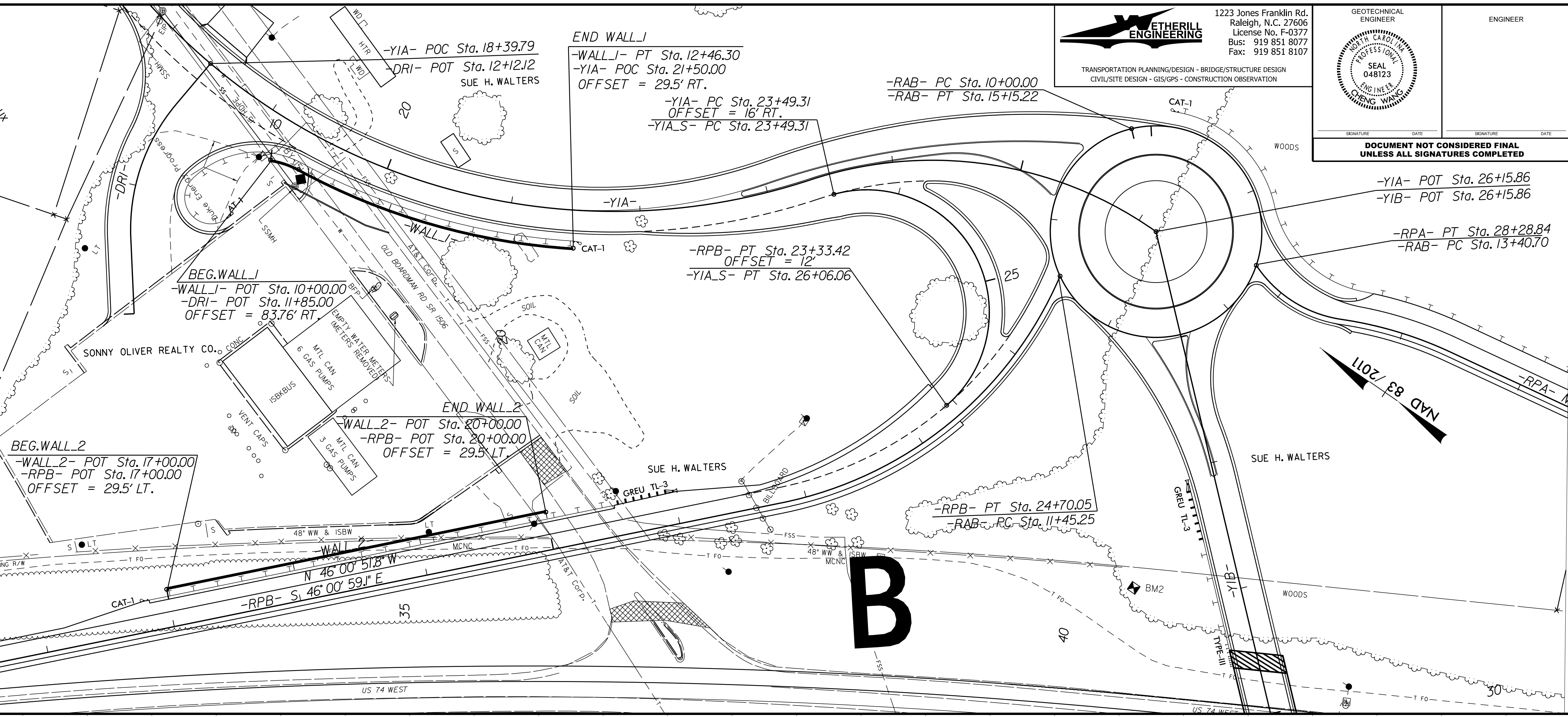
-WALL J-

PI Sta. 10+11.61	PI Sta. 11+36.43
$\Delta = 19^\circ 48' 25.4" (RT)$	$\Delta = 24^\circ 52' 08.8" (LT)$
D = 86'09" 32.6"	D = 11'08" 10.3"
L = 22.99'	L = 223.32'
T = 11.61'	T = 113.45'
R = 66.50'	R = 514.50'



USE W/TYP. SECTION NO. 8
 -RPB- LT. STA. 17+00.00 - 20+00.00

USE W/TYP. SECTIONS NO. 3 AND 11
 -YIA- RT. STA. 19+39.49 - 21+50.00
 -DRI- RT. STA. 10+49.13 - 12+06.67



ETHERILL ENGINEERING
 1223 Jones Franklin Rd., Raleigh, N.C. 27606
 License No. F-0377
 Bus: 919 851 8077
 Fax: 919 851 8107

TRANSPORTATION PLANNING/DESIGN - BRIDGE/STRUCTURE DESIGN
 CIVIL/SITE DESIGN - GIS/GPS - CONSTRUCTION OBSERVATION

GEOTECHNICAL ENGINEER
 SEAL 048123
 STATE OF NORTH CAROLINA
 BOARD OF PROFESSIONAL ENGINEERS

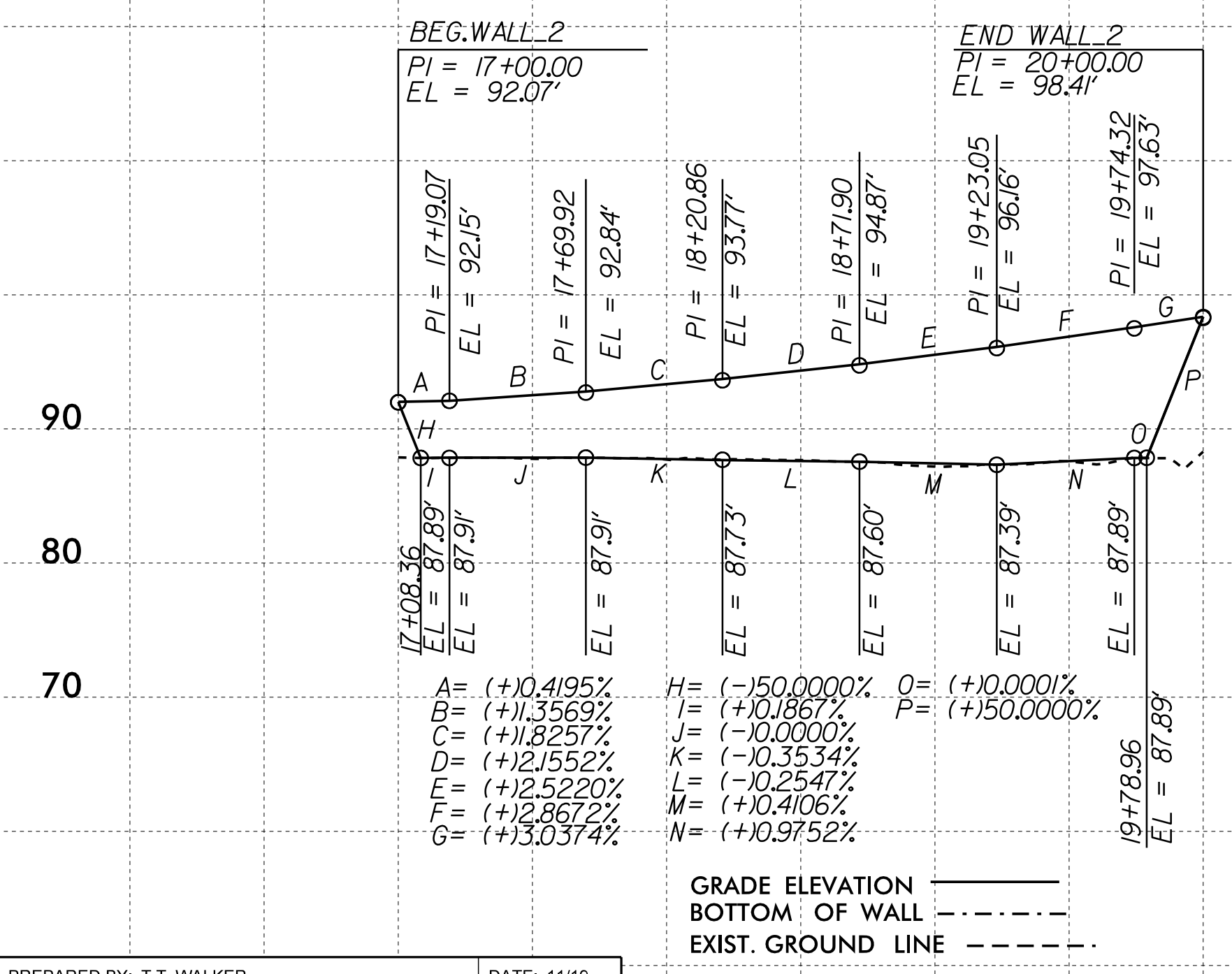
ENGINEER

DOCUMENT NOT CONSIDERED FINAL
 UNLESS ALL SIGNATURES COMPLETED

WALL 2

Approximate Wall Face Area = 2071.3 SQ. FT.

THE WALL ENVELOPE DOES NOT ACCURATELY DEPICT THE ACTUAL FACE OF THE WALL



GRADE ELEVATION ———
 BOTTOM OF WALL - - - - -
 EXIST. GROUND LINE - - - - -

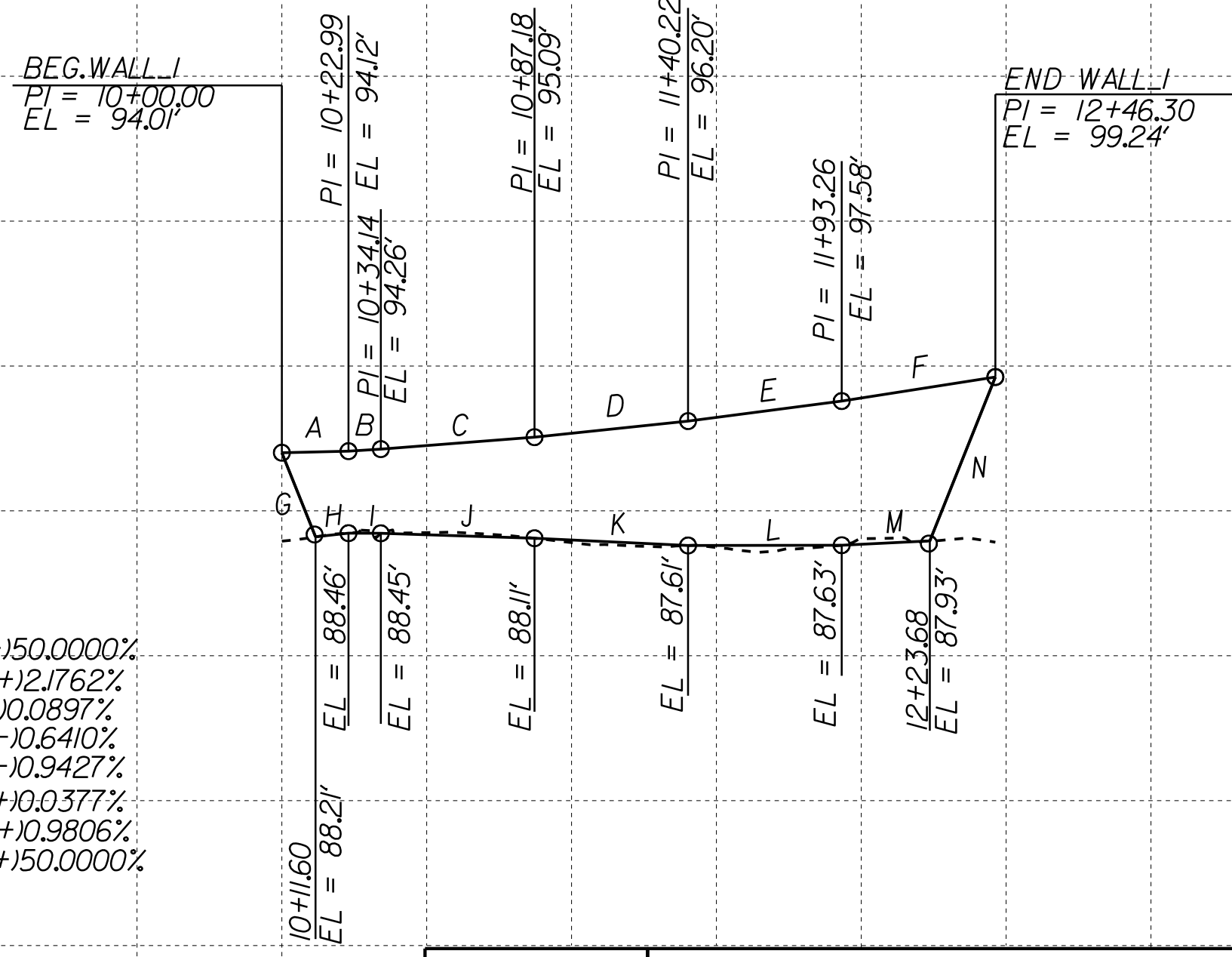
PREPARED BY: T.T. WALKER	DATE: 11/19
REVIEWED BY: C. WANG	DATE: 11/19

VE=5

WALL 1

Approximate Wall Face Area = 2006.8 SQ. FT.

THE WALL ENVELOPE DOES NOT ACCURATELY DEPICT THE ACTUAL FACE OF THE WALL



GRADE ELEVATION ———
 BOTTOM OF WALL - - - - -
 EXIST. GROUND LINE - - - - -

PROJECT NO.: R-5797
 COUNTY: COLUMBUS
 SHEET 1 OF 4

SINCE 1881

F&R

NORTH CAROLINA
 DEPARTMENT OF TRANSPORTATION
 DIVISION OF HIGHWAYS

GEOTECHNICAL ENGINEERING UNIT

MSE RETAINING WALLS
 PLAN AND PROFILES

REVISIONS				
NO.	BY	DATE	NO.	BY
1			3	
2			4	