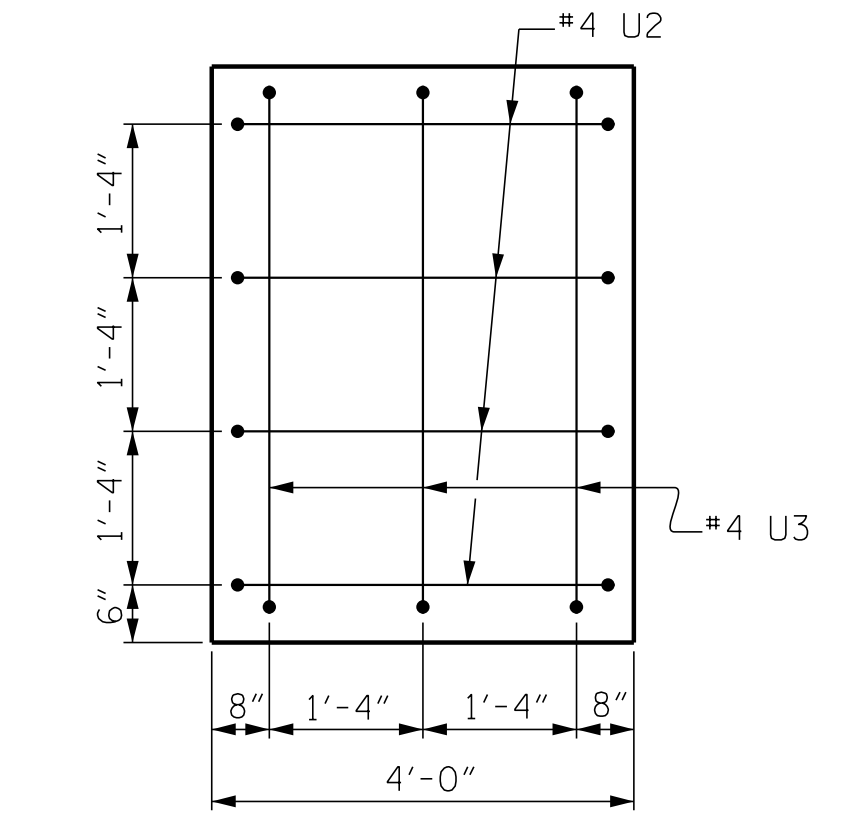
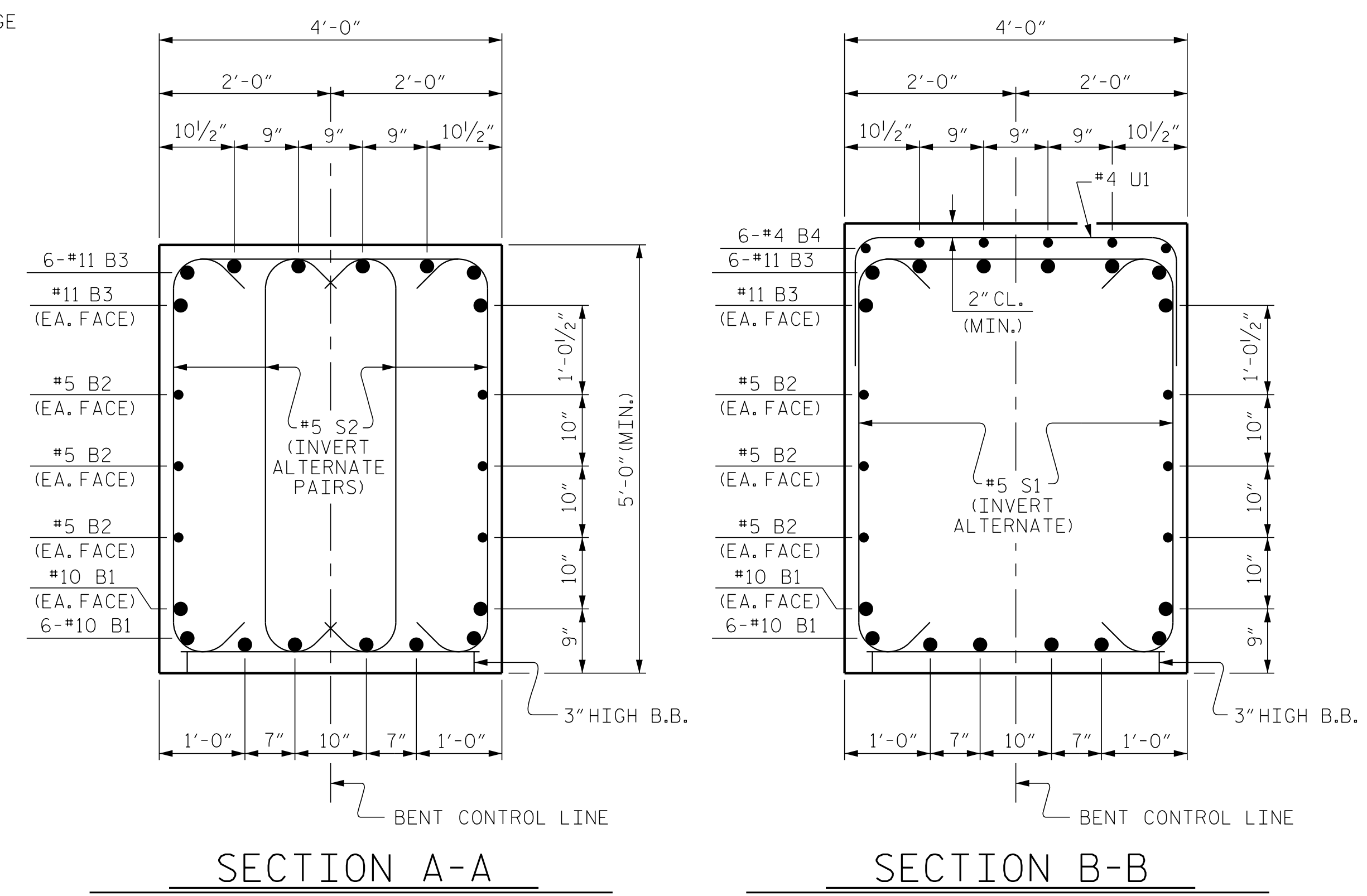


POSITION OF PILE DURING WELDING.  
**PILE SPlice DETAILS**

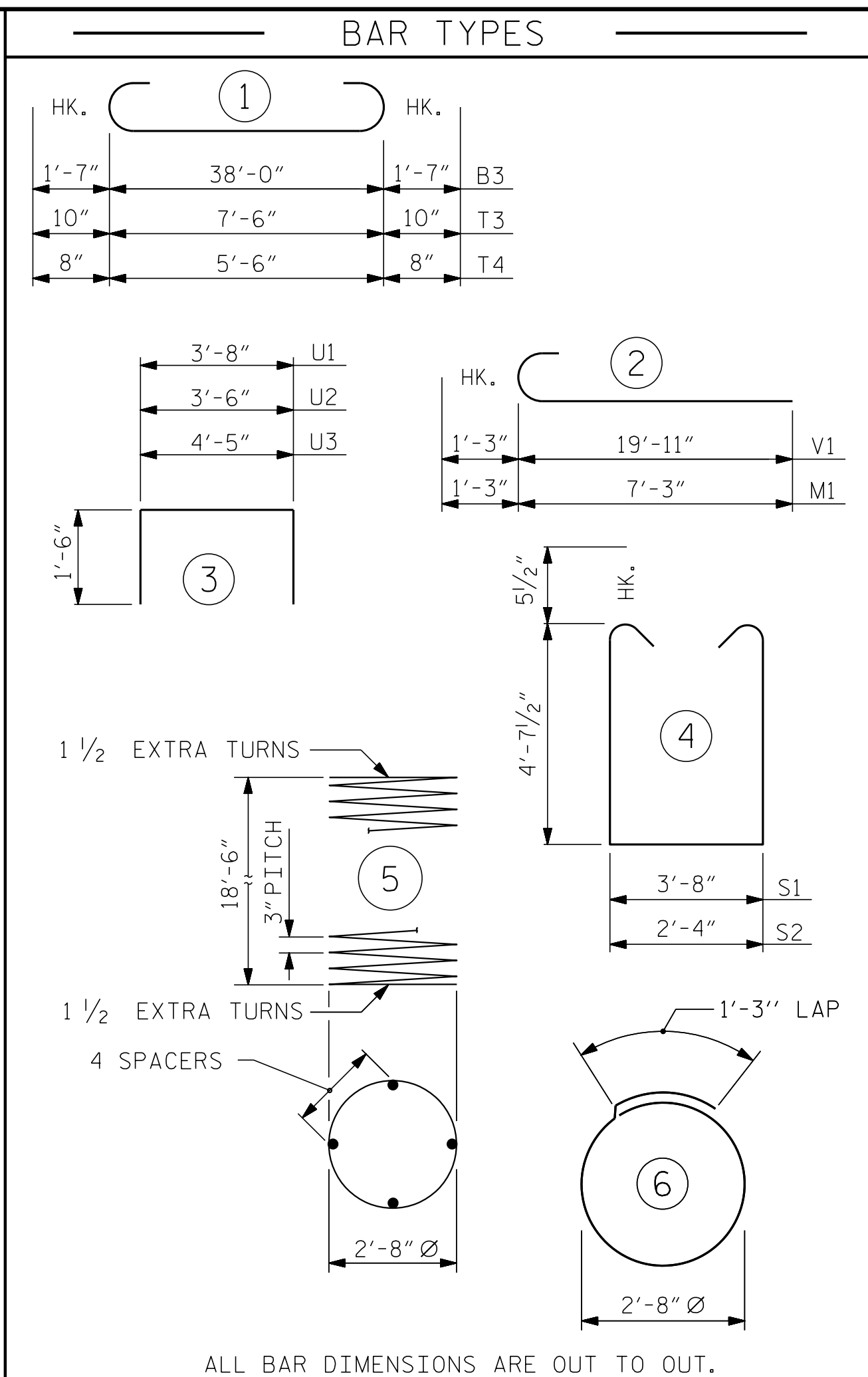


**END OF CAP VIEW**  
(TYP. EA. END)



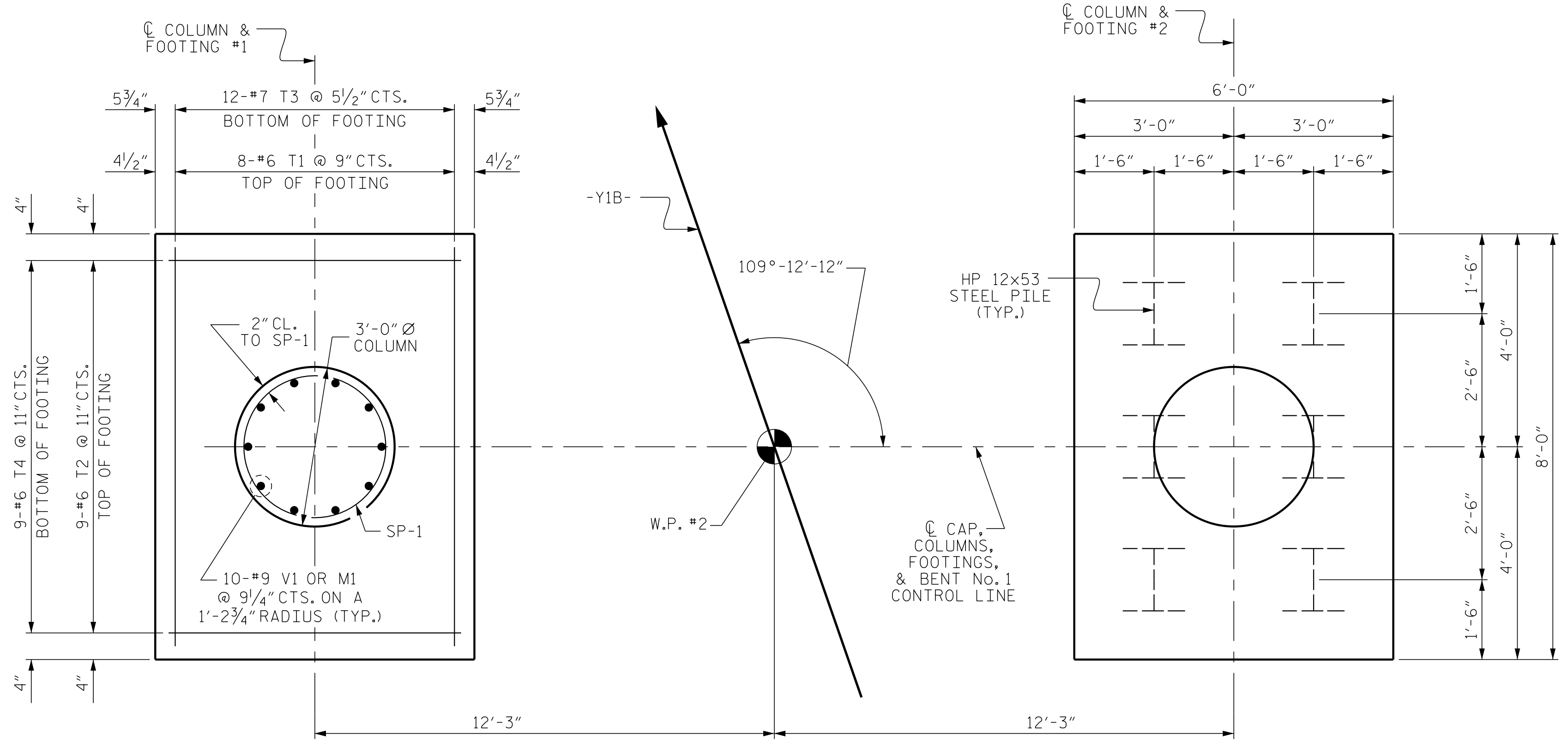
**SECTION A-A**

**SECTION B-B**



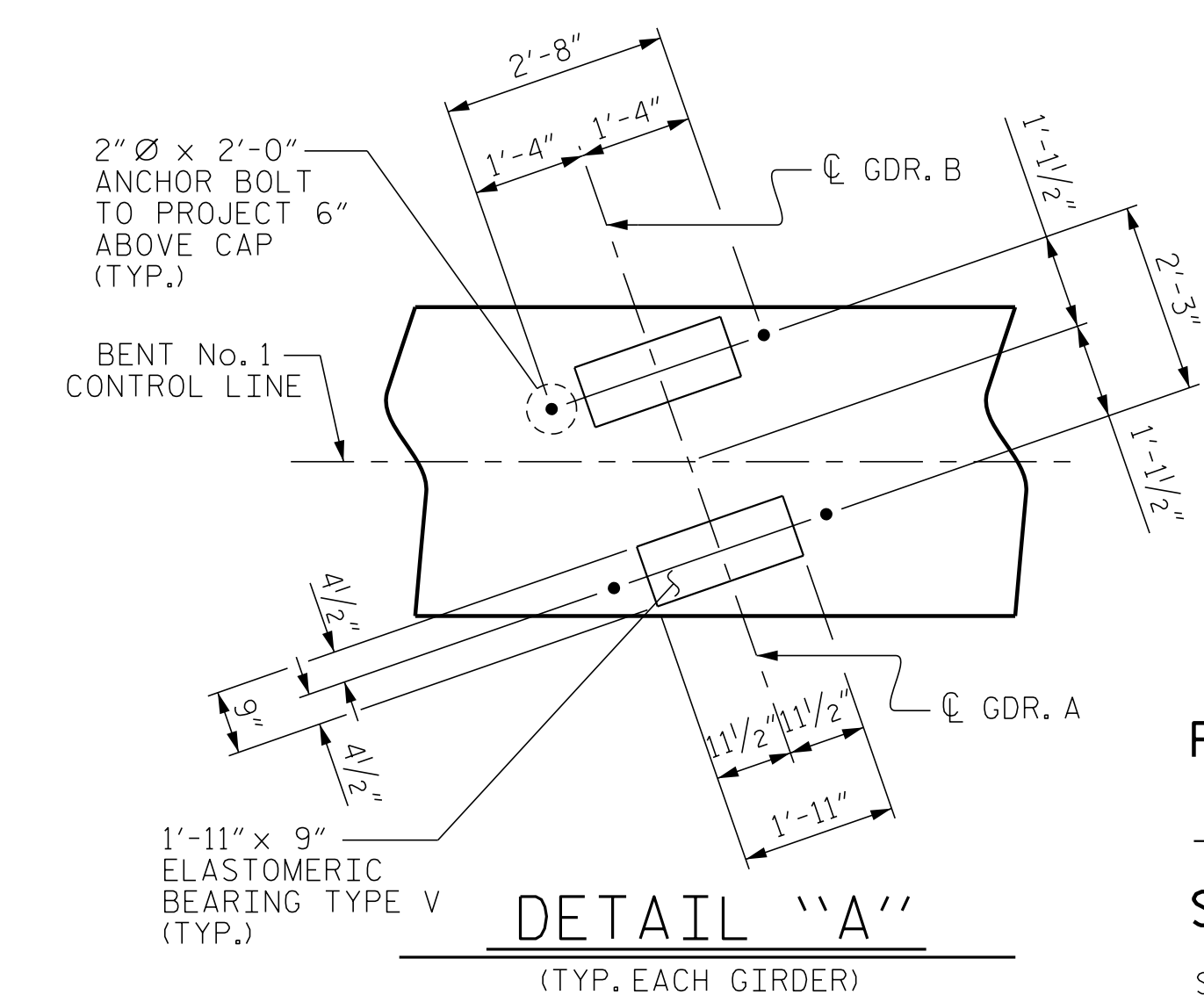
ALL BAR DIMENSIONS ARE OUT TO OUT.  
\*\* THE SP-1 SPIRAL REINFORCING STEEL SHALL BE W31 OR D-31 COLD DRAWN WIRE OR #5 PLAIN OR DEFORMED BAR.

| BILL OF MATERIAL  |     |      |      |         |                |
|---|-----|------|------|---------|----------------|
| BENT No. 1  |     |      |      |         |                |
| BAR   | NO. | SIZE | TYPE | LENGTH  | WEIGHT         |
| B1  | 8   | #10  | STR  | 38'-2"  | 1,314          |
| B2  | 6   | #5   | STR  | 38'-2"  | 239            |
| B3  | 8   | #11  | 1    | 41'-2"  | 1,750          |
| B4  | 6   | #4   | STR  | 15'-8"  | 63             |
| M1  | 20  | #9   | 2    | 8'-6"   | 578            |
| S1  | 43  | #5   | 4    | 13'-10" | 620            |
| S2  | 68  | #5   | 4    | 12'-6"  | 887            |
| S3  | 22  | #4   | 6    | 9'-8"   | 142            |
| T1  | 16  | #6   | STR  | 7'-6"   | 180            |
| T2  | 18  | #6   | STR  | 5'-6"   | 149            |
| T3  | 24  | #7   | 1    | 9'-2"   | 450            |
| T4  | 18  | #6   | 1    | 6'-10"  | 185            |
| U1  | 40  | #4   | 3    | 6'-8"   | 178            |
| U2  | 8   | #4   | 3    | 6'-6"   | 35             |
| U3  | 6   | #4   | 3    | 7'-5"   | 30             |
| V1  | 20  | #9   | 2    | 21'-2"  | 1,439          |
| REINFORCING STEEL                                       |     |      |      |         | 8,239 LBS.     |
| SP-1  | 2   | **   | 5    | 635'-4" | 1,325          |
| SPIRAL COLUMN REINFORCING STEEL                         |     |      |      |         | 1,325 LBS.     |
| CLASS A CONCRETE BREAKDOWN                              |     |      |      |         |                |
| POUR #1 FOOTINGS  |     |      |      |         | 12.4 C.Y.      |
| POUR #2 COLUMNS   |     |      |      |         | 9.6 C.Y.       |
| POUR #3 CAP   |     |      |      |         | 29.2 C.Y.      |
| TOTAL CLASS A CONCRETE                                  |     |      |      |         | 51.2 C.Y.      |
| HP 12 X 53 STEEL PILES                                  |     |      |      |         |                |
| NO: 12  |     |      |      |         | LIN. FT. = 849 |
| PILE REDRIVES   |     |      |      |         | 6 EA.          |
| FOUNDATION EXCAVATION                                   |     |      |      |         | LUMP SUM       |
| PILE DRIVING EQUIPMENT SETUP FOR HP 12 X 53 STEEL PILES |     |      |      |         | 12 EA.         |



**PLAN OF FOOTINGS AND COLUMNS**

PILE PLACEMENT, REINFORCING STEEL, DIMENSIONS AND DETAILS ARE TYPICAL FOR EACH COLUMN AND FOOTING.



**DETAIL "A"**  
(TYP. EACH GIRDER)

PROJECT NO. R-5797  
COLUMBUS COUNTY  
STATION: 30+65.33 -Y1B-  
SHEET 2 OF 2

ENGINEER OF RECORD:  
8/22/2019  
NORTH CAROLINA PROFESSIONAL SEAL 37400  
ENGINEER  
GREGORY M. GILLAND  
ETHERILL ENGINEERING  
1223 Jones Franklin Rd.  
Raleigh, N.C. 27606  
Bus: 919 851 8077  
Fax: 919 851 8107  
LICENSE NO. F-0377

| REVISIONS |     |       |     |     |       |
|-----------|-----|-------|-----|-----|-------|
| NO.       | BY: | DATE: | NO. | BY: | DATE: |
| 1         |     |       | 3   |     |       |
| 2         |     |       | 4   |     |       |

SHEET NO. S-26  
TOTAL SHEETS 33

DOCUMENT NOT CONSIDERED FINAL UNLESS ALL SIGNATURES COMPLETED

P:\2017\171860 1-R-5797 Structures\06NR5797\_SMJ\_BT.dgn  
8/21/2019 1:43:12 PM

DRAWN BY: D. HODGE DATE: 4/19  
CHECKED BY: G.M. GILLAND DATE: 4/19