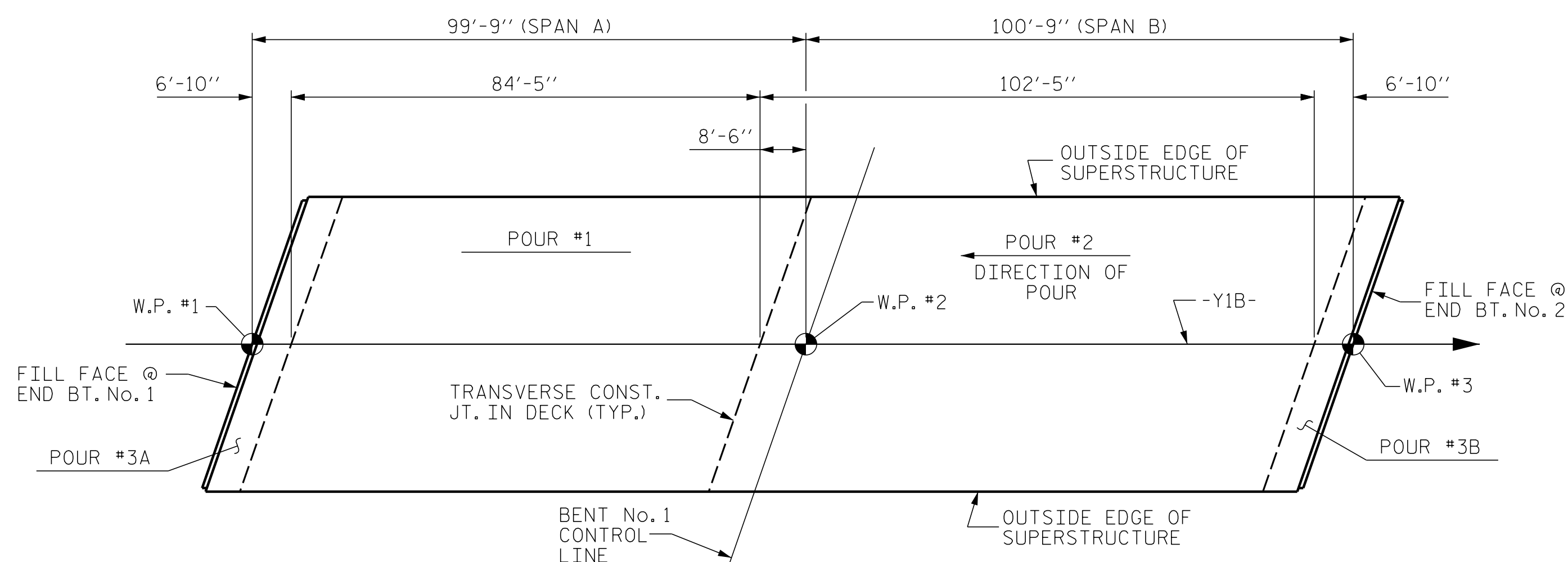


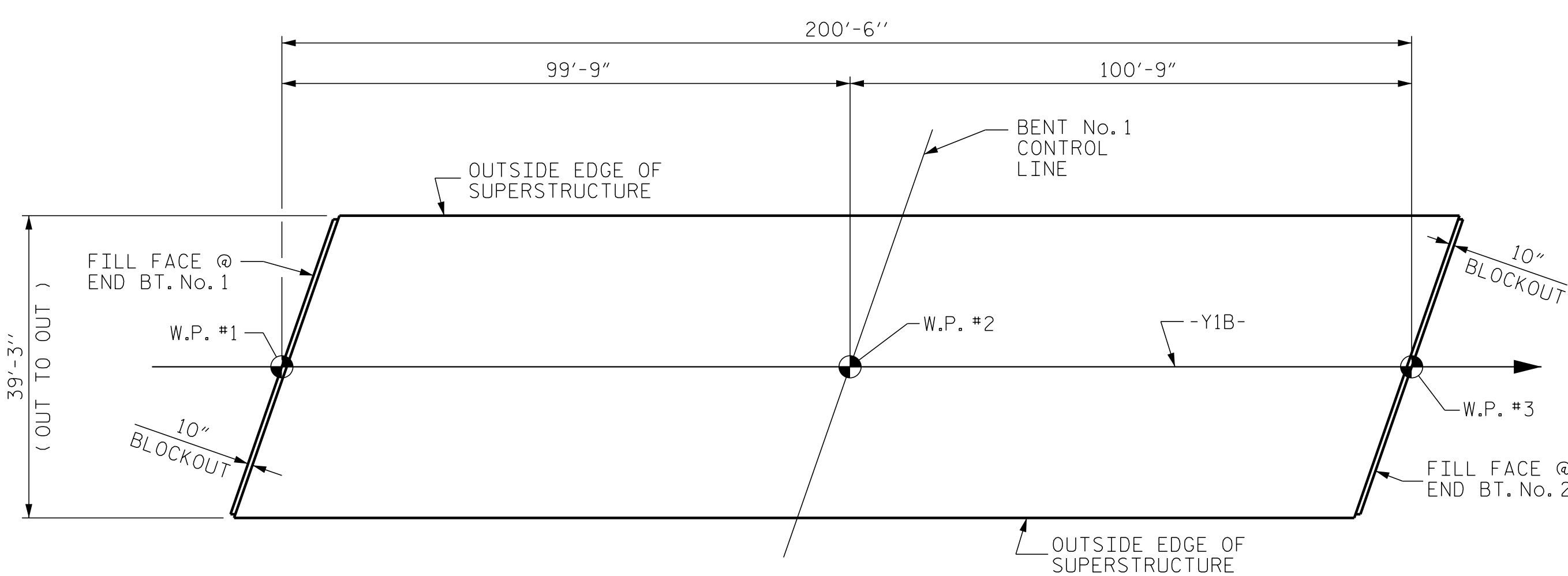
OPTIONAL DECK POUR DETAIL

POUR ② SHALL NOT BE STARTED UNTIL BOTH ADJACENT POUR ① REACH A MINIMUM OF 3,000 PSI



CONCRETE DECK POUR DETAIL

NOTE: EACH POUR #3 INCLUDES UPPER PART OF THE INTEGRAL END BENT.



LAYOUT FOR COMPUTING AREA REINFORCED CONCRETE DECK SLAB
(SQ. FT. = 7,870)

REINFORCING BAR SCHEDULE

SPAN "A-B"

BAR	NO.	SIZE	TYPE	LENGTH	WEIGHT
* A1	404	#5	STR	38'-11"	16,398
A2	404	#5	STR	38'-11"	16,398
* A101	4	#5	STR	36'-5"	152
* A102	4	#5	STR	33'-10"	141
* A103	4	#5	STR	31'-2"	130
* A104	4	#5	STR	28'-6"	119
* A105	4	#5	STR	25'-11"	108
* A106	4	#5	STR	23'-3"	97
* A107	4	#5	STR	20'-8"	86
* A108	4	#5	STR	18'-0"	75
* A109	4	#5	STR	15'-4"	64
* A110	4	#5	STR	12'-9"	53
* A111	4	#5	STR	10'-1"	42
* A112	4	#5	STR	7'-6"	31
* A113	4	#5	STR	4'-10"	20

A201	4	#5	STR	36'-5"	152
A202	4	#5	STR	33'-10"	141
A203	4	#5	STR	31'-2"	130
A204	4	#5	STR	28'-6"	119
A205	4	#5	STR	25'-11"	108
A206	4	#5	STR	23'-3"	97
A207	4	#5	STR	20'-8"	86
A208	4	#5	STR	18'-0"	75
A209	4	#5	STR	15'-4"	64
A210	4	#5	STR	12'-9"	53
A211	4	#5	STR	10'-1"	42
A212	4	#5	STR	7'-6"	31
A213	4	#5	STR	4'-10"	20

* B1	152	#6	STR	20'-0"	4,566
* B2	52	#4	STR	24'-11"	866
* B3	52	#6	STR	36'-6"	2,851
* B4	50	#6	STR	30'-0"	2,253
* B5	52	#4	STR	25'-5"	883
B6	208	#5	STR	51'-3"	11,118
* B7	14	#4	STR	30'-0"	281

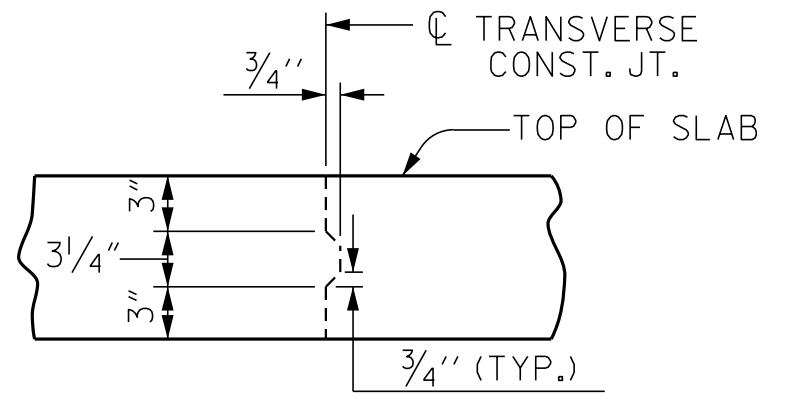
K1	20	#4	STR	21'-6"	287
K2	6	#4	STR	9'-1"	36
K3	12	#4	STR	10'-2"	81
K4	6	#4	STR	9'-9"	39
K5	6	#4	STR	8'-8"	35
K6	10	#4	STR	17'-11"	120
K7	8	#4	STR	2'-9"	15
K8	8	#4	STR	3'-3"	17
K9	4	#4	STR	2'-6"	7
K10	6	#4	STR	8'-9"	35
K11	6	#4	STR	9'-2"	37
K12	18	#4	STR	9'-7"	115

* S1	62	#4	1	10'-7"	438
* S2	62	#4	1	11'-11"	494
S3	102	#4	4	2'-10"	193

U1	62	#4	2	11'-10"	490
U2	4	#4	2	11'-0"	29
U3	21	#4	3	14'-11"	209
U4	6	#4	3	12'-11"	52

REINFORCING STEEL	30,431 LBS.
* EPOXY COATED REINFORCING STEEL	30,148 LBS.

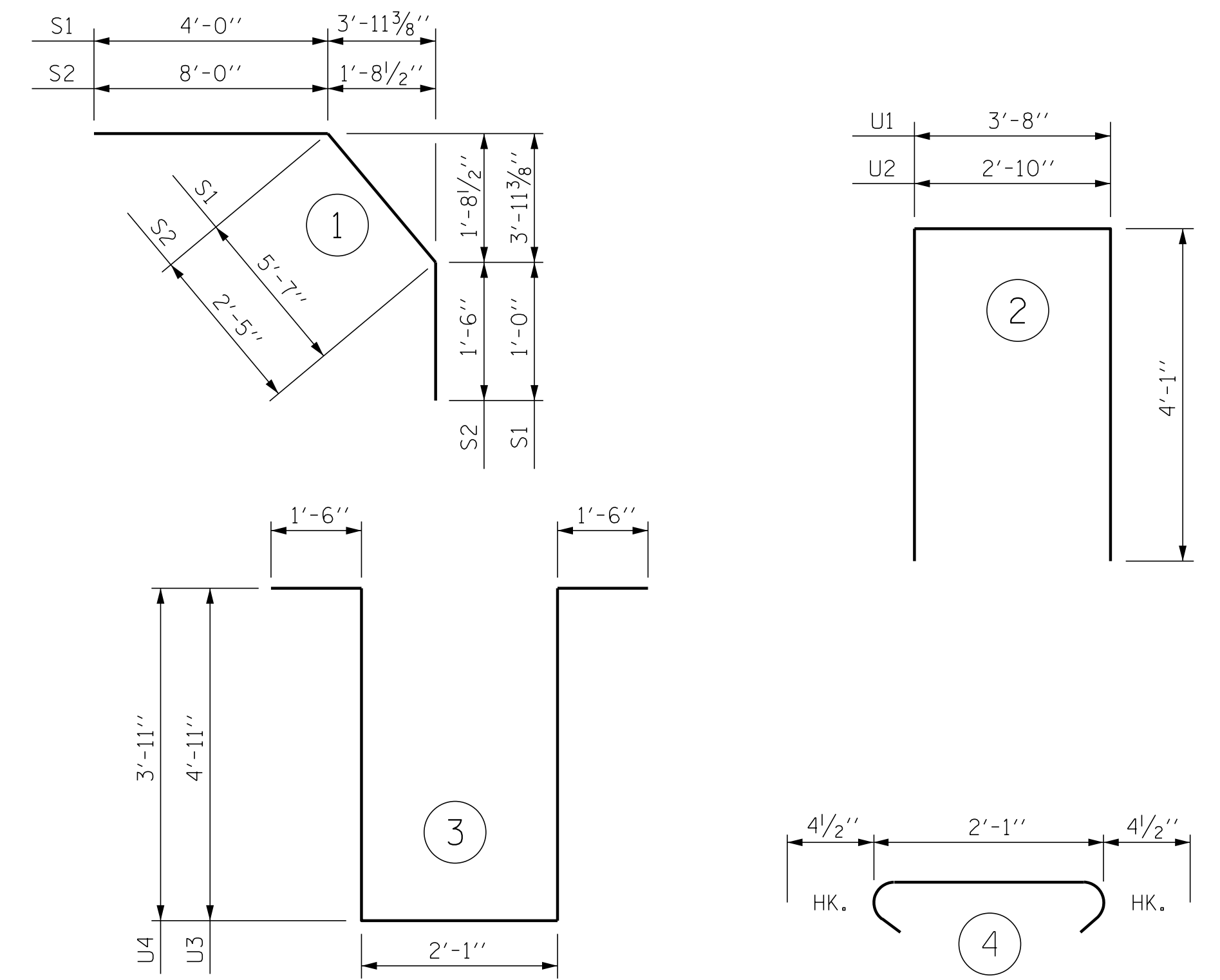
* THESE BARS ARE EPOXY COATED.



TRANSVERSE CONST. JOINT DETAIL

NOTE: SLAB REINFORCING STEEL SHALL BE CONTINUOUS THRU JOINT

BAR TYPES



ALL BAR DIMENSIONS ARE OUT TO OUT

SUPERSTRUCTURE BILL OF MATERIAL

	CLASS AA CONCRETE (CU. YDS.)	REINFORCING STEEL (LBS.)	* EPOXY COATED REINFORCING STEEL (LBS.)
TOTALS **	320.5	30,431	30,148

** QUANTITIES FOR CONCRETE PARAPETS ARE NOT INCLUDED

GROOVING BRIDGE FLOORS

APPROACH SLABS	962 SQ.FT.
BRIDGE DECK	6,691 SQ.FT.
TOTAL	7,653 SQ.FT.

CLASS AA CONCRETE BREAKDOWN

POUR #1	109.7	CY
POUR #2	146.3	CY
POUR #3A	33.3	CY
POUR #3B	33.3	CY
CLASS AA CONCRETE BREAKDOWN TOTAL	322.6	CY

SUPERSTRUCTURE REINFORCING STEEL LENGTHS ARE BASED ON THE FOLLOWING MINIMUM SPLICE LENGTHS

BAR SIZE	SUPERSTRUCTURE EXCEPT APPROACH SLABS, PARAPET, AND BARRIER RAIL		APPROACH SLABS		PARAPET AND BARRIER RAIL
	EPOXY COATED	UNCOATED	EPOXY COATED	UNCOATED	
#4	2'-0"	1'-9"	2'-0"	1'-9"	2'-9"
#5	2'-6"	2'-2"	2'-6"	2'-2"	3'-5"
#6	3'-0"	2'-7"	3'-10"	2'-7"	4'-4"
#7	5'-3"	3'-6"			
#8	6'-10"	4'-7"			

PROJECT NO. R-5797
COLUMBUS COUNTY
STATION: 30+65.33 -Y1B-

P:\2017\17186501-R-5797 Structures\Drawings\SMU_BM.dgn 8/21/2019 1:40:26 PM

DRAWN BY: D. HODGE DATE: 1/19
CHECKED BY: G.M. GILLAND DATE: 1/19

ENGINEER OF RECORD:
8/22/2019
PROFESSIONAL SEAL 37400
GREGORY M. GILLAND
ENGINEER
1223 Jones Franklin Rd.
Raleigh, N.C. 27606
Bus: 919 851 8077
Fax: 919 851 8107
LICENSE NO. F-0377

STATE OF NORTH CAROLINA
DEPARTMENT OF TRANSPORTATION
RALEIGH
SUPERSTRUCTURE BILL OF MATERIAL

REVISIONS						SHEET NO.
NO.	BY:	DATE:	NO.	BY:	DATE:	S-21
1			3			TOTAL SHEETS
2			4			33

DOCUMENT NOT CONSIDERED FINAL UNLESS ALL SIGNATURES COMPLETED