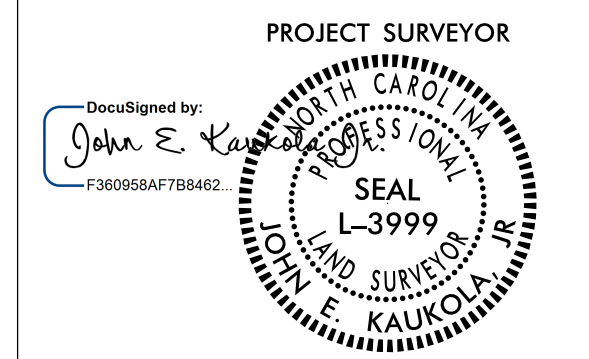


Location and Surveys

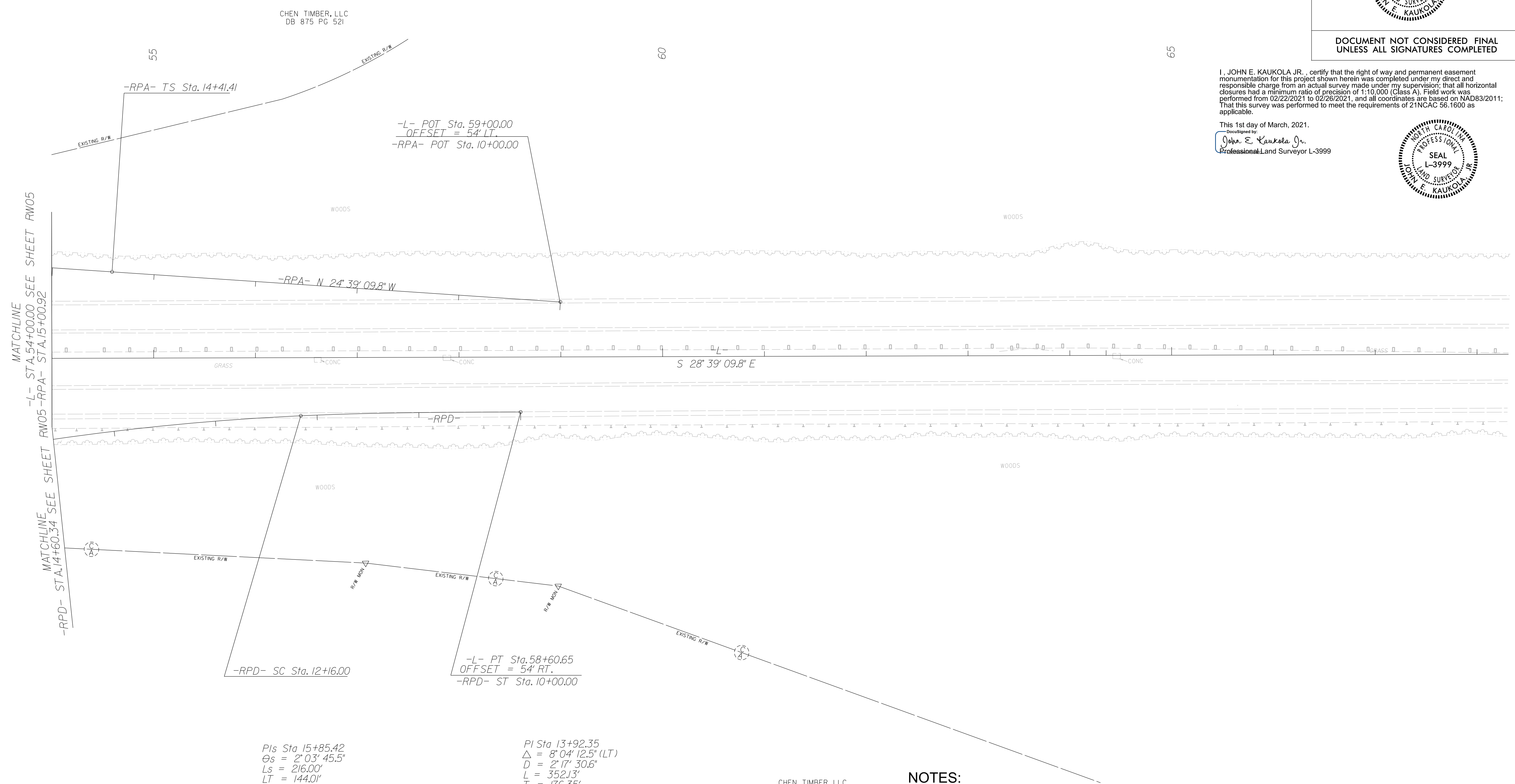
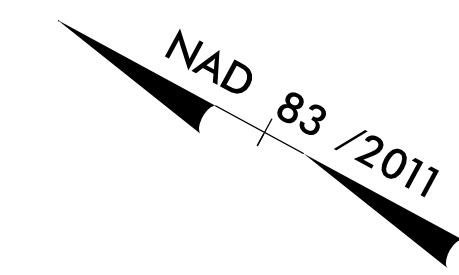
DIVISION OF HIGHWAYS
LOCATION AND SURVEYS
DIVISION 6 FIELD OFFICE



DOCUMENT NOT CONSIDERED FINAL
UNLESS ALL SIGNATURES COMPLETED

I, JOHN E. KAUKOLA JR., certify that the right of way and permanent easement monumentation for this project shown herein was completed under my direct and responsible charge from an actual survey made under my supervision; that all horizontal closures had a minimum ratio of precision of 1:10,000 (Class A). Field work was performed from 02/22/2021 to 02/26/2021, and all coordinates are based on NAD83/2011; That this survey was performed to meet the requirements of 21NCAC 56.1600 as applicable.

This 1st day of March, 2021.
DocuSigned by:
John E. Kaukola Jr.
Professional Land Surveyor L-3999



PIs Sta 15+85.42
 $\theta_s = 2° 03' 45.5''$
 $L_s = 216.00'$
 $LT = 144.01'$
 $ST = 72.01'$

PI Sta 13+92.35
 $\Delta = 8° 04' 12.5'' (LT)$
 $D = 2' 17' 30.6''$
 $L = 352.13'$
 $T = 176.35'$
 $R = 2,500.00'$
 $SE = .06$

CHEN TIMBER, LLC
DB 875 PG 521

NOTES:

1. IF FURTHER INFORMATION REGARDING PROJECT CONTROL IS NEEDED PLEASE CONTACT THE LOCATION AND SURVEYS UNIT.
2. PROJECT CONTROL WAS ESTABLISHED USING GNSS, THE GLOBAL NAVIGATION SATELLITE SYSTEM.
3. RIGHT OF WAY MONUMENTATION ESTABLISHED 02/22/2021 TO 02/26/2021.

REVISIONS

K:\FFB-2021\1379
 1106341121-Projects\R-5797\E-r-o-w-sheets_210122\work\RW\1379_1s_rw06.dgn
 AT 0106-312634
 cnbleekmon