

REVISIONS

8/17/19

1/27/2021 R-5797_Rd1_PSH_07.dgn

BEGIN CONSTRUCTION
-Y1A- POT STA. 11+00.00

-Y1A- PC Sta. 11+83.19

-Y1A- PT Sta. 14+33.20
S 25° 32' 22.6" W

-Y2- PC Sta. 12+78.86

-Y2- PT Sta. 19+20.13
S 47° 22' 20.4" E

-Y2- POT Sta. 21+99.99

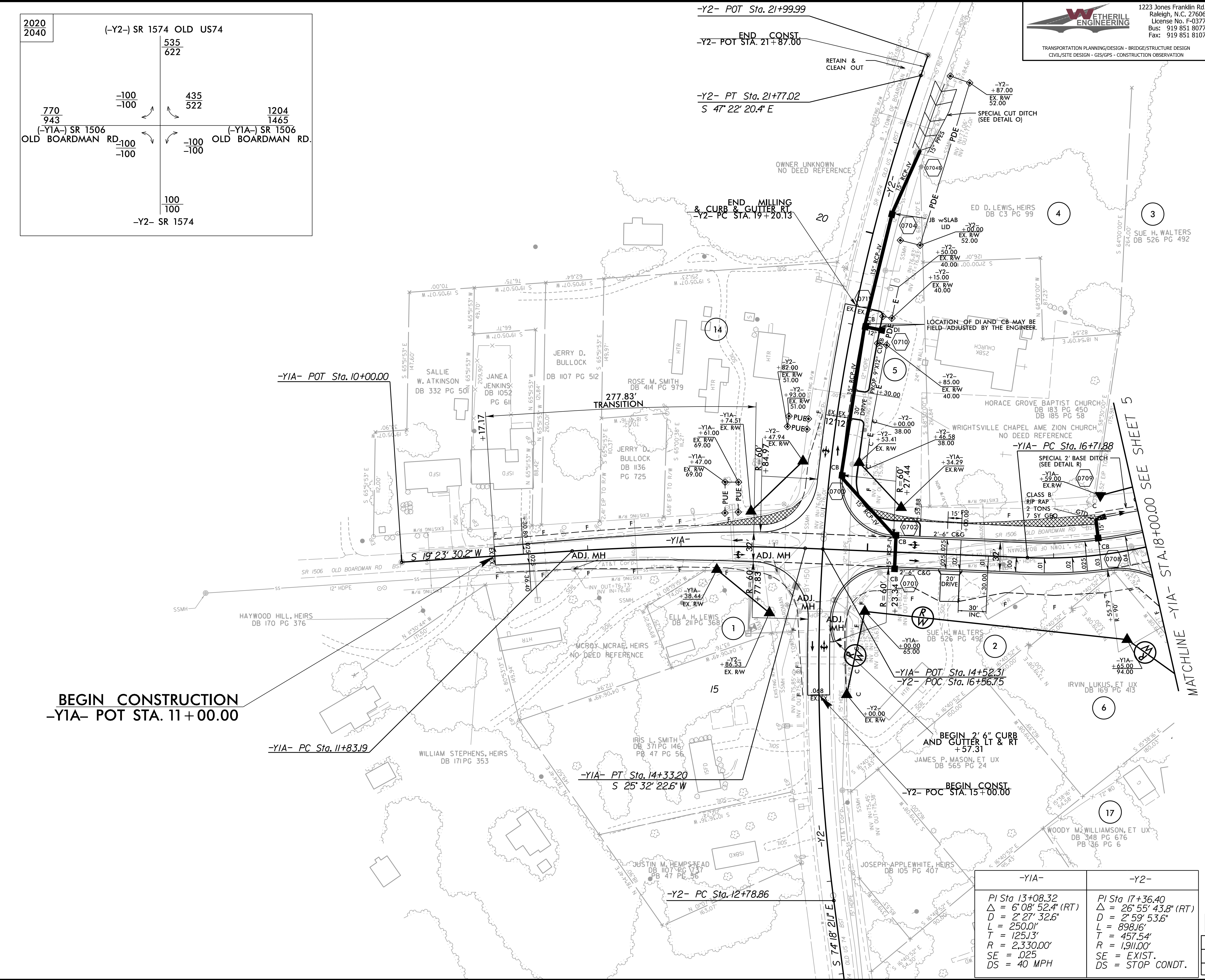
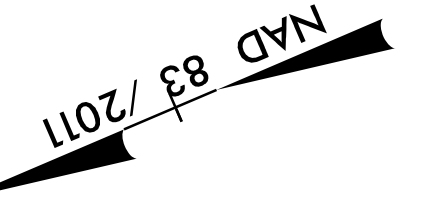
-Y2- END CONST
-Y2- POT STA. 21+87.00

-Y2- POC STA. 15+00.00

-Y1A- POT Sta. 14+52.3
-Y2- POC Sta. 16+56.75

-Y1A- PC Sta. 16+71.88

MATCHLINE -Y1A- STA. 18+00.00 SEE SHEET 5



-Y1A-	-Y2-
PI Sta 13+08.32	PI Sta 17+36.40
Δ = 6' 08" 52.4" (RT)	Δ = 26' 55" 43.8" (RT)
D = 2' 27" 32.6"	D = 2' 59" 53.6"
L = 250.01'	L = 898.16'
T = 125.13'	T = 457.54'
R = 2,330.00'	R = 1,911.00'
SE = .025	SE = EXIST.
DS = 40 MPH	DS = STOP COND.

PAVEMENT REMOVAL

FOR -Y1A- PROFILE, SEE SHEET NO. 14
 FOR -Y2- PROFILE, SEE SHEET NO. 15
 SEE SHEET 2D-1 FOR DITCH DETAILS

PROP. C&G, ISLAND