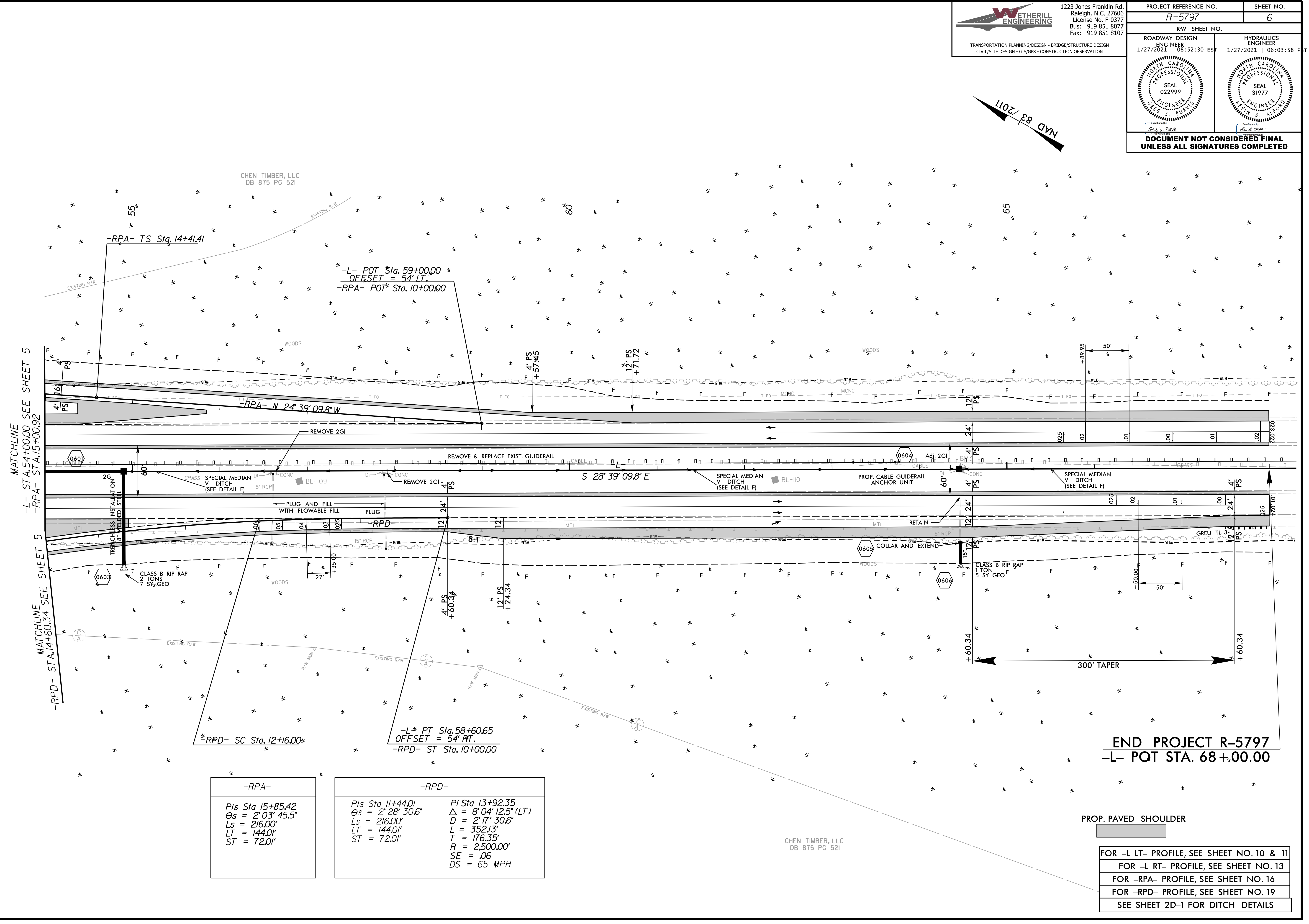
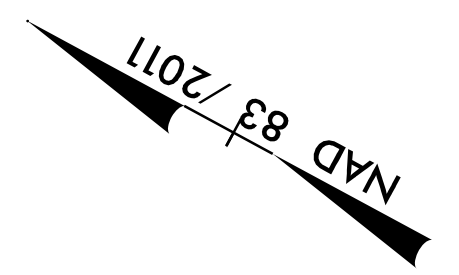




1223 Jones Franklin Rd.
Raleigh, N.C. 27606
License No. F-0377
Bus: 919 851 8077
Fax: 919 851 8107

PROJECT REFERENCE NO. R-5797	SHEET NO. 6
RW SHEET NO.	HYDRAULICS ENGINEER
ROADWAY DESIGN ENGINEER 1/27/2021 10:52:30 EST	1/27/2021 06:03:58 P
DOCUMENT NOT CONSIDERED FINAL UNLESS ALL SIGNATURES COMPLETED	



MATCHLINE -L- STA. 54+00.00 SEE SHEET 5
 -RPA- STA. 15+00.92
 MATCHLINE -RPD- STA. 14+60.34 SEE SHEET 5

-RPA-	
PIs Sta 15+85.42	
θs = 2° 03' 45.5"	
Ls = 216.00'	
LT = 144.01'	
ST = 72.01'	

-RPD-	
PIs Sta 11+44.01	PI Sta 13+92.35
θs = 2° 28' 30.6"	Δ = 8° 04' 12.5" (LT)
Ls = 216.00'	D = 2° 17' 30.6"
LT = 144.01'	L = 352.13'
ST = 72.01'	T = 176.35'
	R = 2,500.00'
	SE = .06
	DS = 65 MPH

END PROJECT R-5797
-L- POT STA. 68+00.00

PROP. PAVED SHOULDER

- FOR -L LT- PROFILE, SEE SHEET NO. 10 & 11
- FOR -L RT- PROFILE, SEE SHEET NO. 13
- FOR -RPA- PROFILE, SEE SHEET NO. 16
- FOR -RPD- PROFILE, SEE SHEET NO. 19
- SEE SHEET 2D-1 FOR DITCH DETAILS

8/17/99
 1/28/2021 R-5797_Rdy_PSH_06.dgn
 USER: JCH