

8/17/99

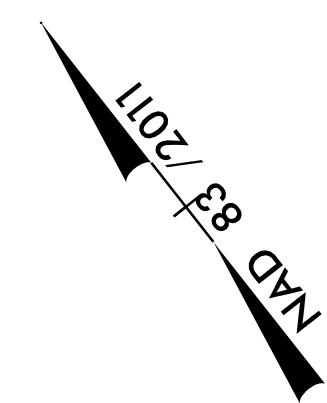
WETHERILL ENGINEERING
 1223 Jones Franklin Rd.
 Raleigh, N.C. 27606
 License No. F-0377
 Bus: 919 851 8077
 Fax: 919 851 8107

TRANSPORTATION PLANNING/DESIGN - BRIDGE/STRUCTURE DESIGN
 CIVIL/SITE DESIGN - GIS/GPS - CONSTRUCTION OBSERVATION

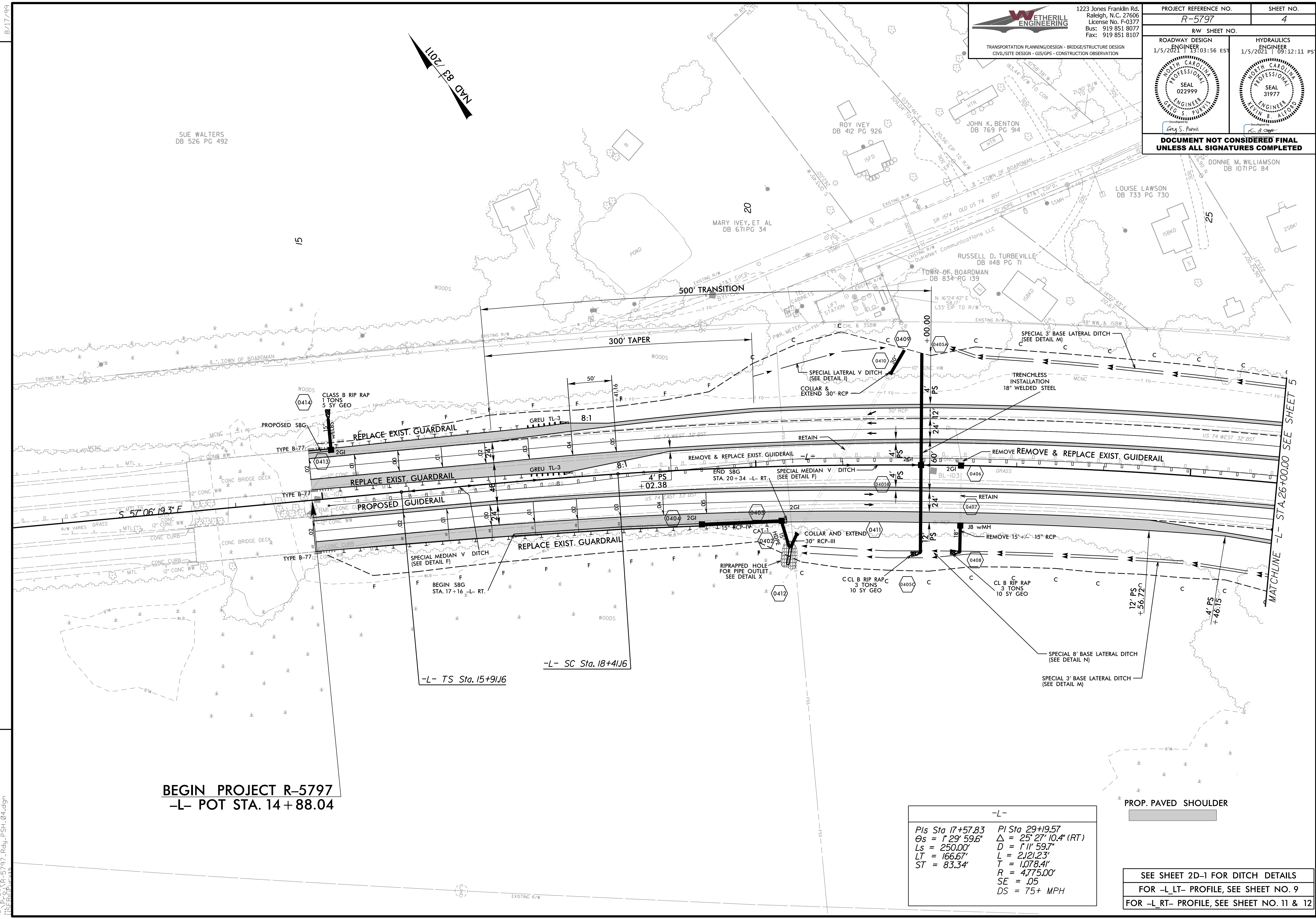
PROJECT REFERENCE NO. R-5797	SHEET NO. 4
RW SHEET NO.	
ROADWAY DESIGN ENGINEER 1/5/2021 13:03:56 EST	HYDRAULICS ENGINEER 1/5/2021 09:12:11 PST
DOCUMENT NOT CONSIDERED FINAL UNLESS ALL SIGNATURES COMPLETED	

SUE WALTERS
DB 526 PG 492

DONNIE M. WILLIAMSON
DB 1071 PG 84



REVISIONS



BEGIN PROJECT R-5797
-L- POT STA. 14+88.04

-L-	
$Pis\ Sta\ 17+57.83$	$Pi\ Sta\ 29+19.57$
$\theta_s = 1' 29'' 59.6''$	$\Delta = 25' 27'' 10.4'' (RT)$
$Ls = 250.00'$	$D = 1' 11'' 59.7''$
$LT = 166.67'$	$L = 2,121.23'$
$ST = 83.34'$	$T = 1,078.41'$
	$R = 4,775.00'$
	$SE = .05$
	$DS = 75+ MPH$

PROP. PAVED SHOULDER

SEE SHEET 2D-1 FOR DITCH DETAILS
 FOR -L_LT- PROFILE, SEE SHEET NO. 9
 FOR -L_RT- PROFILE, SEE SHEET NO. 11 & 12

12/9/2020 R-5797_Rdy_PSH_04.dgn