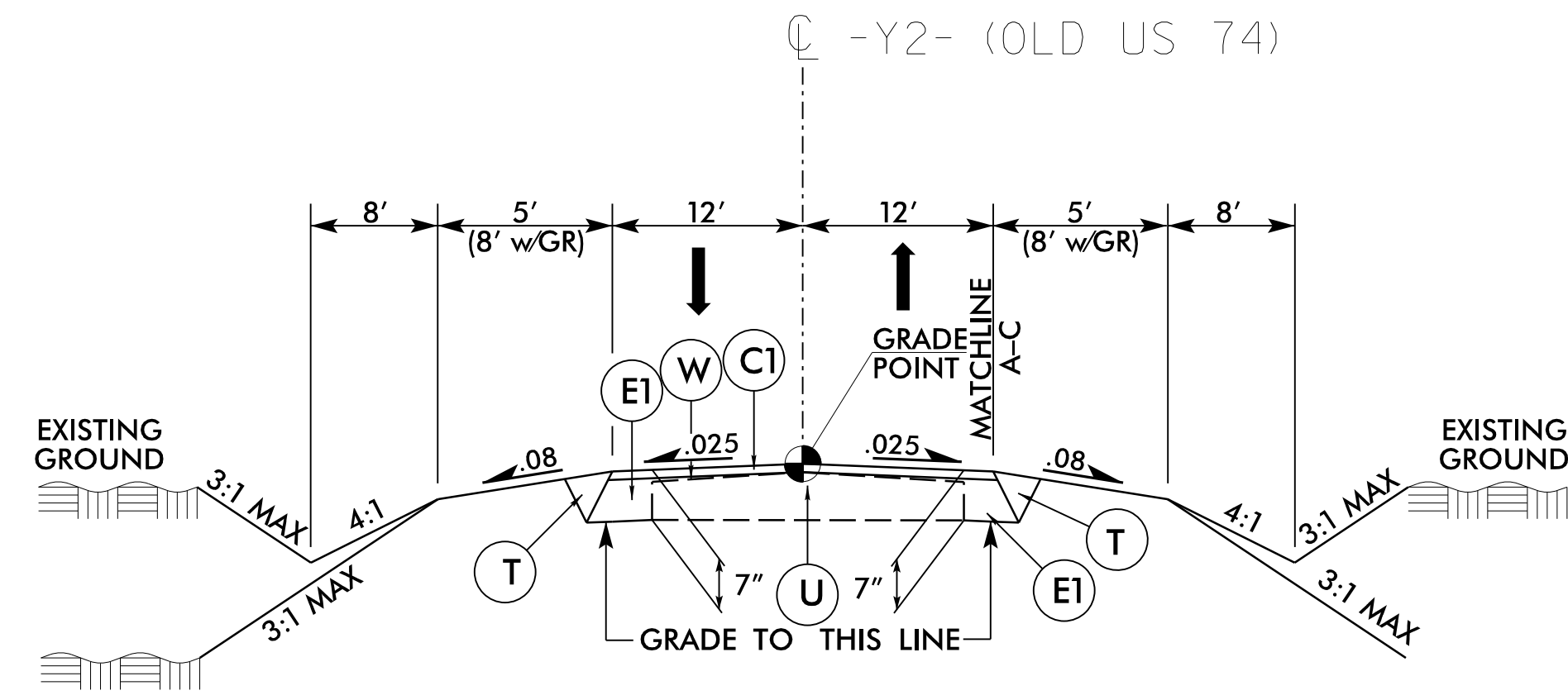
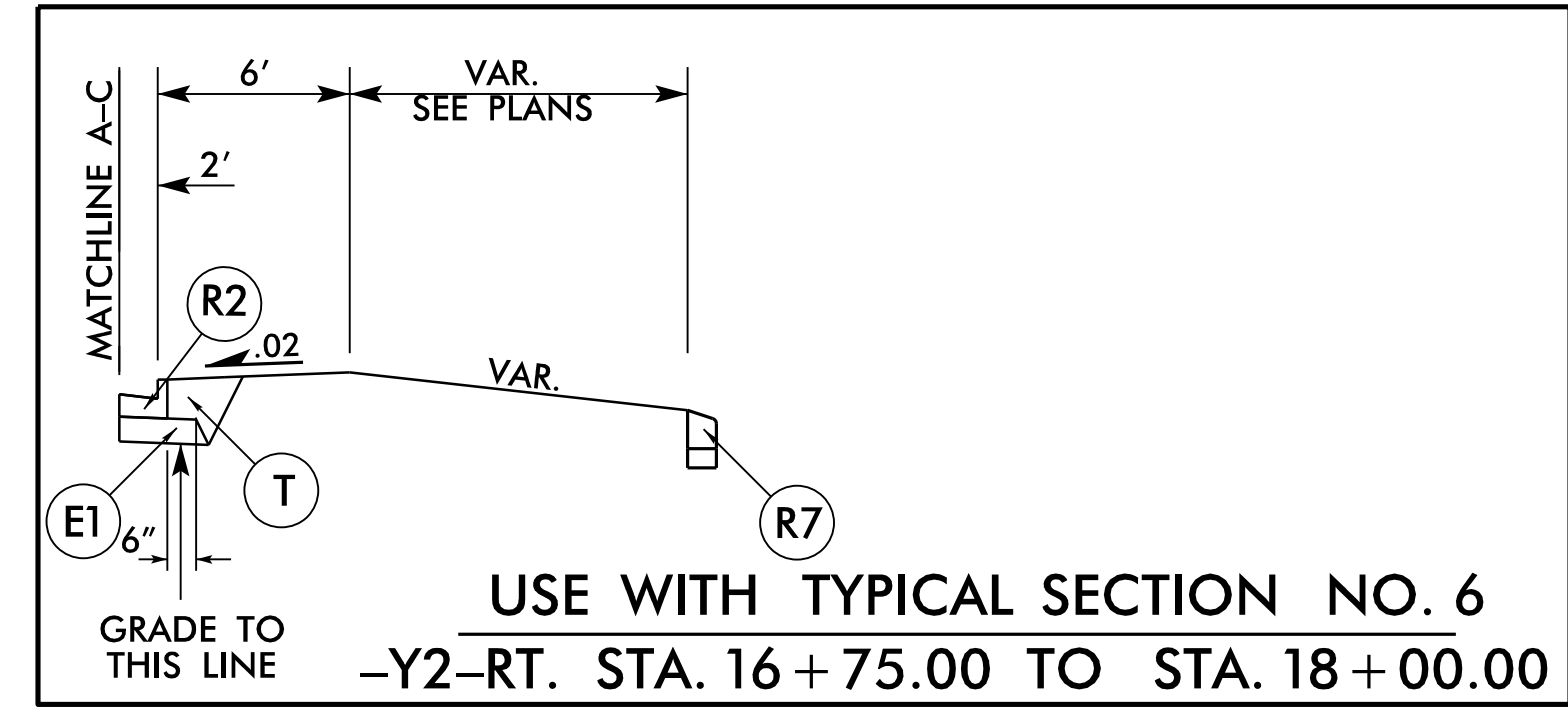


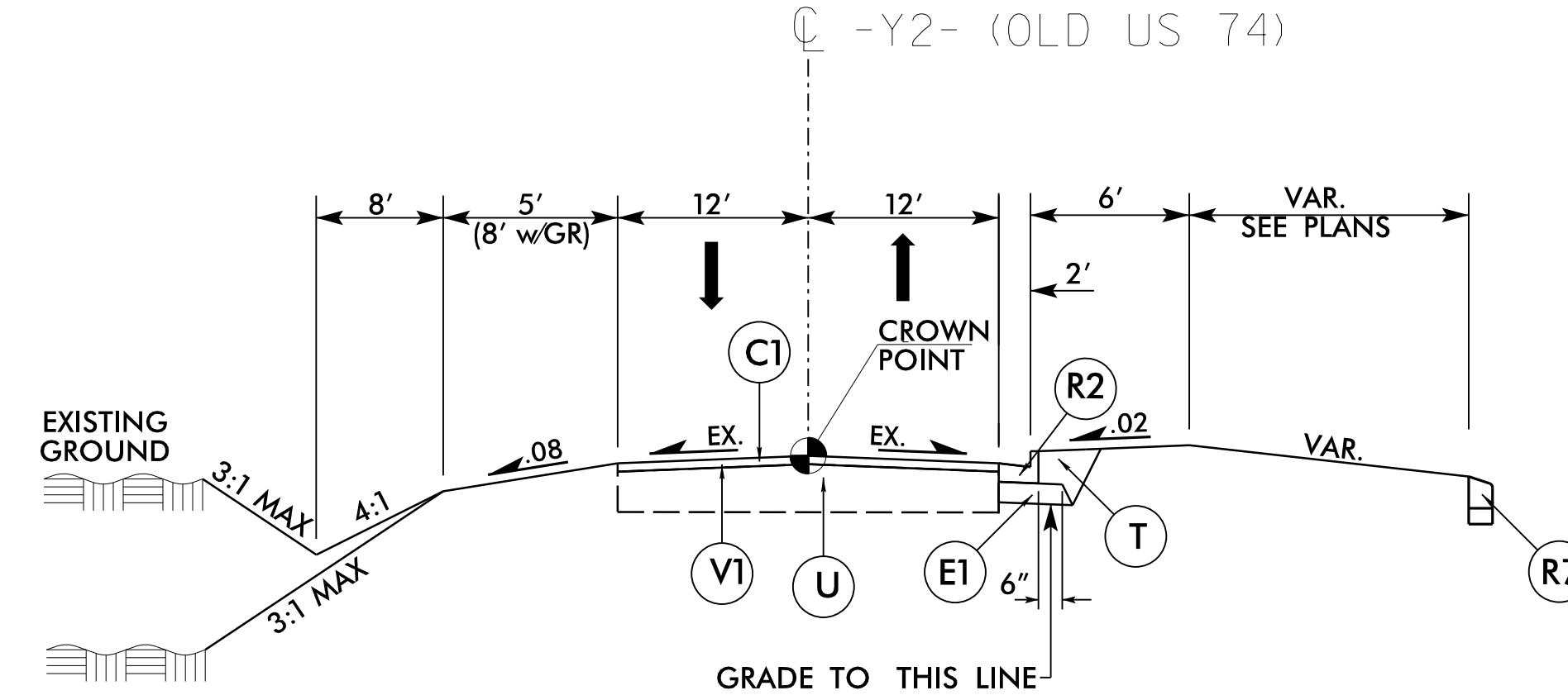
5/14/19



**TYPICAL SECTION NO. 6**

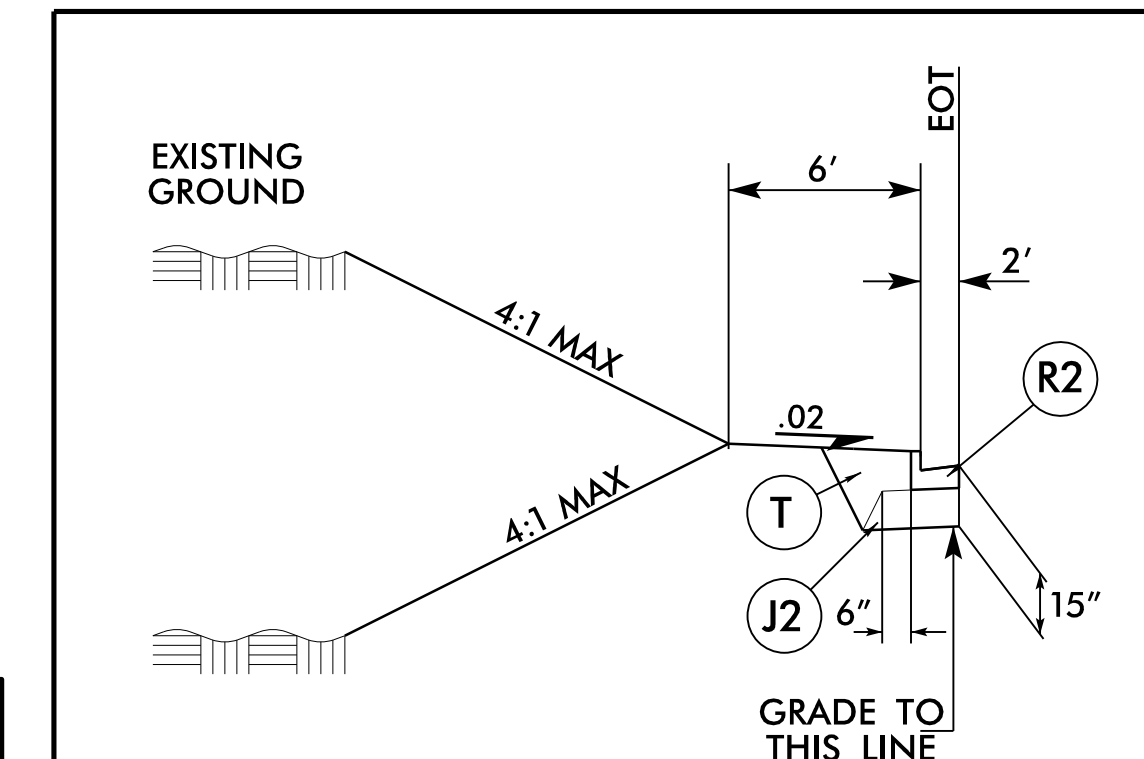


**USE TYPICAL SECTION NO. 6**  
 -Y2- STA. 15+00.00 TO STA. 16+40.75  
 -Y2- STA. 16+75.00 TO STA. 18+00.00

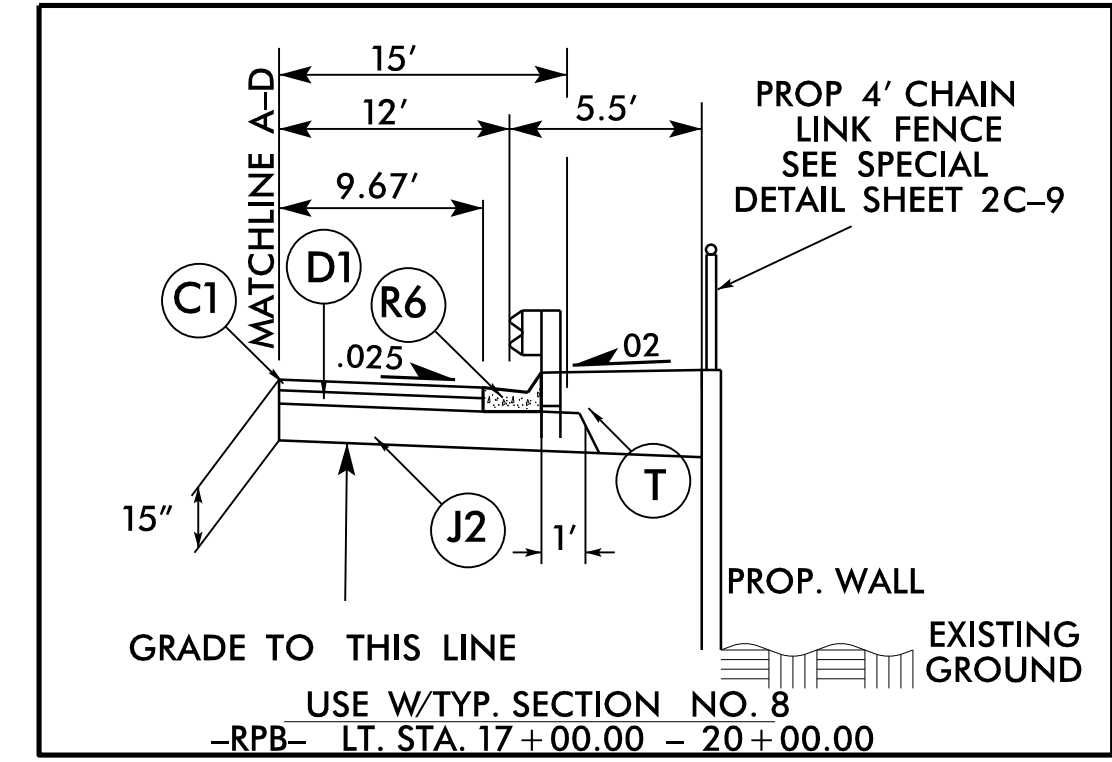


**TYPICAL SECTION NO. 7**

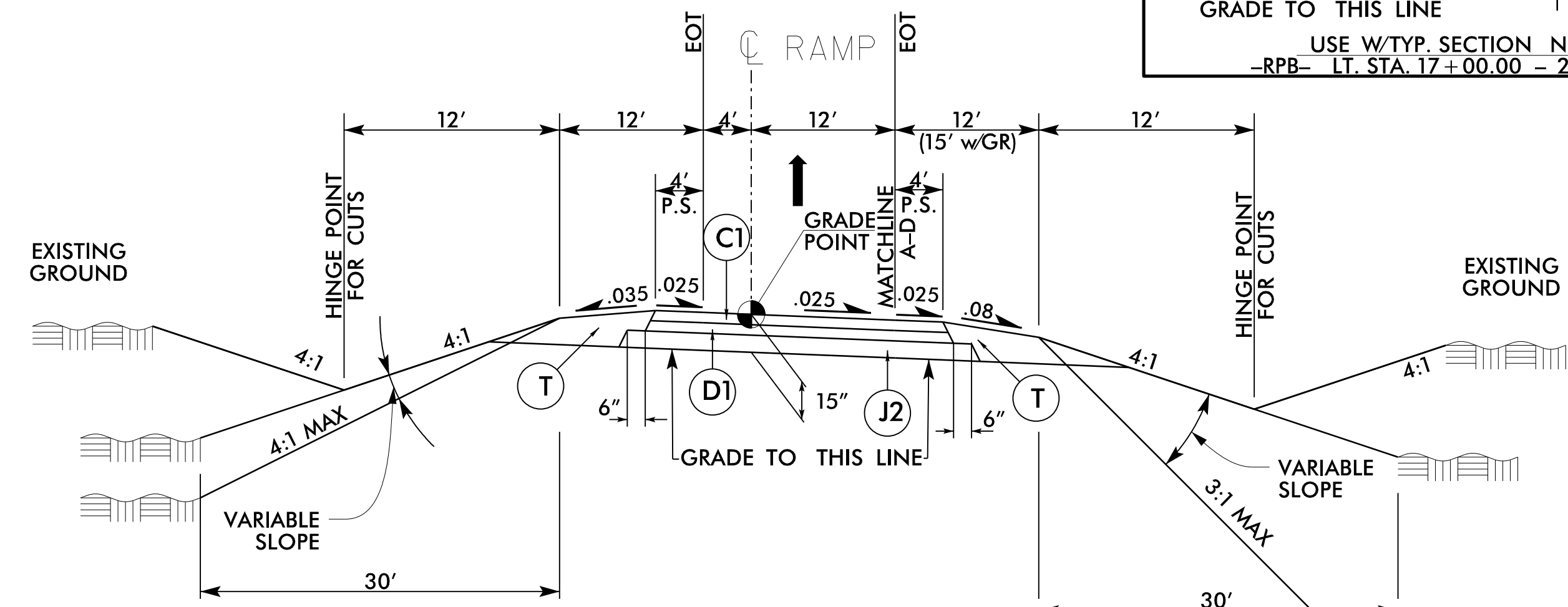
**USE TYPICAL SECTION NO. 7**  
 -Y2- STA. 18+00.00 TO STA. 19+20.00



**USE W/TYP. SECTION NO. 8**  
 -RPA- LT. RT. STA. 27+39.19 TO STA. 28+28.84  
 -RPB- RT. STA. 23+33.42 TO STA. 24+67.09  
 -RPB- LT. STA. 24+10.52 TO STA. 24+67.09  
 -RPC- LT. RT. STA. 25+09.64 TO STA. 23+31.53  
 -RPD- LT. RT. STA. 22+83.16 TO STA. 25+13.83

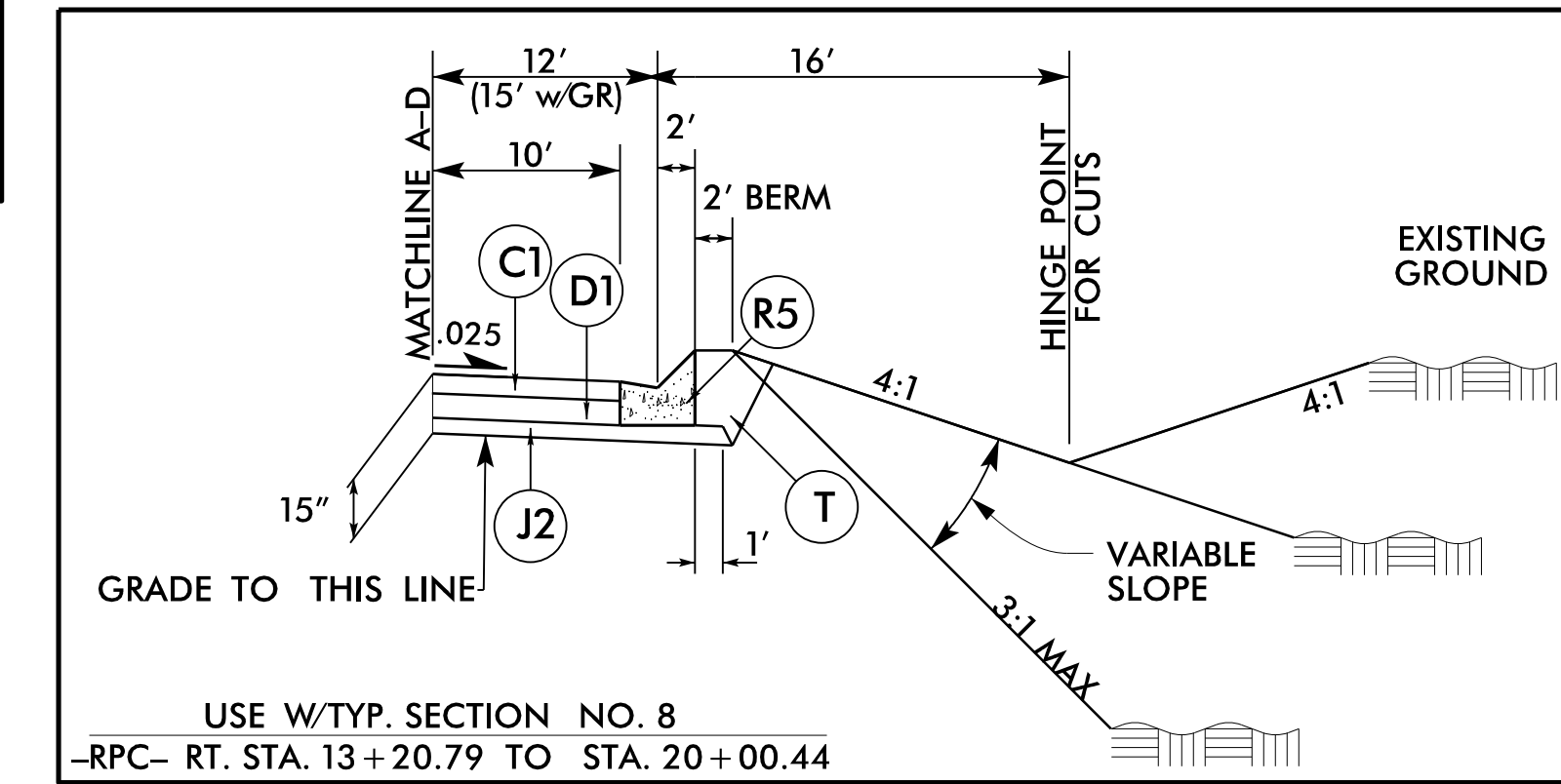


**USE W/TYP. SECTION NO. 8**  
 -RPB- LT. STA. 17+00.00 - 20+00.00



**TYPICAL SECTION NO. 8**

NOTE: IN GORE AREA USE MAINLINE PAVEMENT DESIGN (SEE STD. 225.03)



**USE TYPICAL SECTION NO. 8**  
 -RPA- STA. 10+00.00 TO STA. 28+28.84  
 -RPB- STA. 10+00.00 TO STA. 24+70.05 (REVERSE TYP.)  
 -RPC- STA. 10+00.00 TO STA. 26+22.25  
 -RPD- STA. 10+00.00 TO STA. 25+13.83 (REVERSE TYP.)

PROJECT REFERENCE NO. R-5797	SHEET NO. 2A-4	
RW SHEET NO.		
ROADWAY DESIGN ENGINEER 3/8/2021 SEAL 022999 CRAIG S. PUNYI	OVERLAY PAVEMENT DESIGN ENGINEER 3/8/2021 SEAL 044590 ANDREW D. WAGG	PAVEMENT DESIGN ENGINEER 3/8/2021 SEAL 033758 MATTHEW D. PATRICK

**DOCUMENT NOT CONSIDERED FINAL UNLESS ALL SIGNATURES COMPLETED**

1223 Jones Franklin Rd.  
Raleigh, N.C. 27606  
License No. F-0377  
Bus: 919 851 8077  
Fax: 919 851 8107

TRANSPORTATION PLANNING/DESIGN - BRIDGE/STRUCTURE DESIGN  
 CIVIL/SITE DESIGN - GIS/GPS - CONSTRUCTION OBSERVATION

SINCE Prepared in the Office of:  
**F&R** FROEHLING & ROBERTSON, INC.  
 Engineering Stability Since 1881  
 310 Hubert Street  
 Raleigh, North Carolina 27603-2302  
 License No. F-0266  
 Bus: 919.828.3441 Fax: 919.828.5751

**PAVMT. SCHEDULE (FINAL)**

C1	3" S9.5B
C2	VAR. S9.5B
C3	3" S9.5C
C4	VAR. S9.5C
D1	4" I19.0C
D2	VAR. I19.0C
E1	4" B25.0C
E2	5 1/2" B25.0C
E3	VAR. B25.0C
J1	6" ABC
J2	8" ABC
R1	1'-6" C&G
R2	2'-6" C&G
R3	12" CON. TRK. APR.
R4	8"X18" CONC. CURB
R5	EXPRESSWAY GUTTER
R6	SHLD. BERM GUTTER
R7	9"X12" CONC. CURB
R8	4" CONC. ISLAND COVER
R9	5" MONO. ISLAND (KEYED IN)
T	EARTH MAT.
U	EXIST. PAV.
V1	INC. MILLING
W	VAR. DEPTH. PAV.
X	ARTIFICIAL TURF
Y	MILLED RUM. STRIPS

5/18/2021 10:57:57 AM Rdy\_PSH\_02A-4.dgn