

5/14/2021 8:13:28 PM PSH\_02A-3.dgn

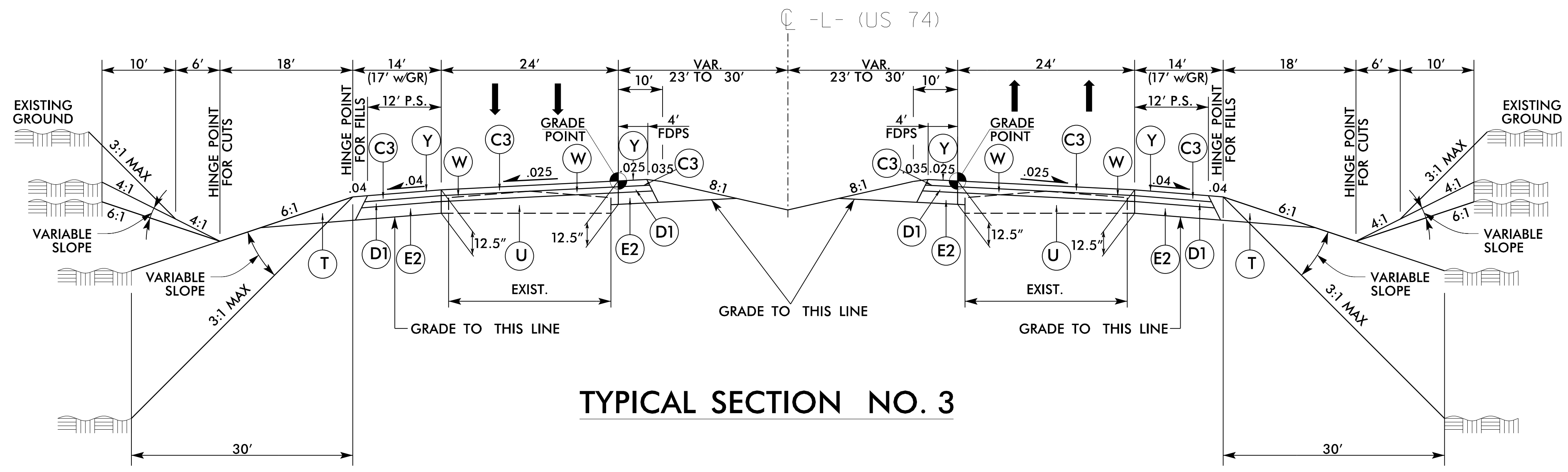
PROJECT REFERENCE NO. R-5797	SHEET NO. 2A-3
RW SHEET NO.	
ROADWAY DESIGN ENGINEER 2/3/2021 	OVERLAY PAVEMENT DESIGN ENGINEER 2/3/2021 
PAVEMENT DESIGN ENGINEER 2/3/2021 	

**DOCUMENT NOT CONSIDERED FINAL  
UNLESS ALL SIGNATURES COMPLETED**

1223 Jones Franklin Rd.  
Raleigh, N.C. 27606  
License No. F-0377  
Bus: 919 851 8077  
Fax: 919 851 8107

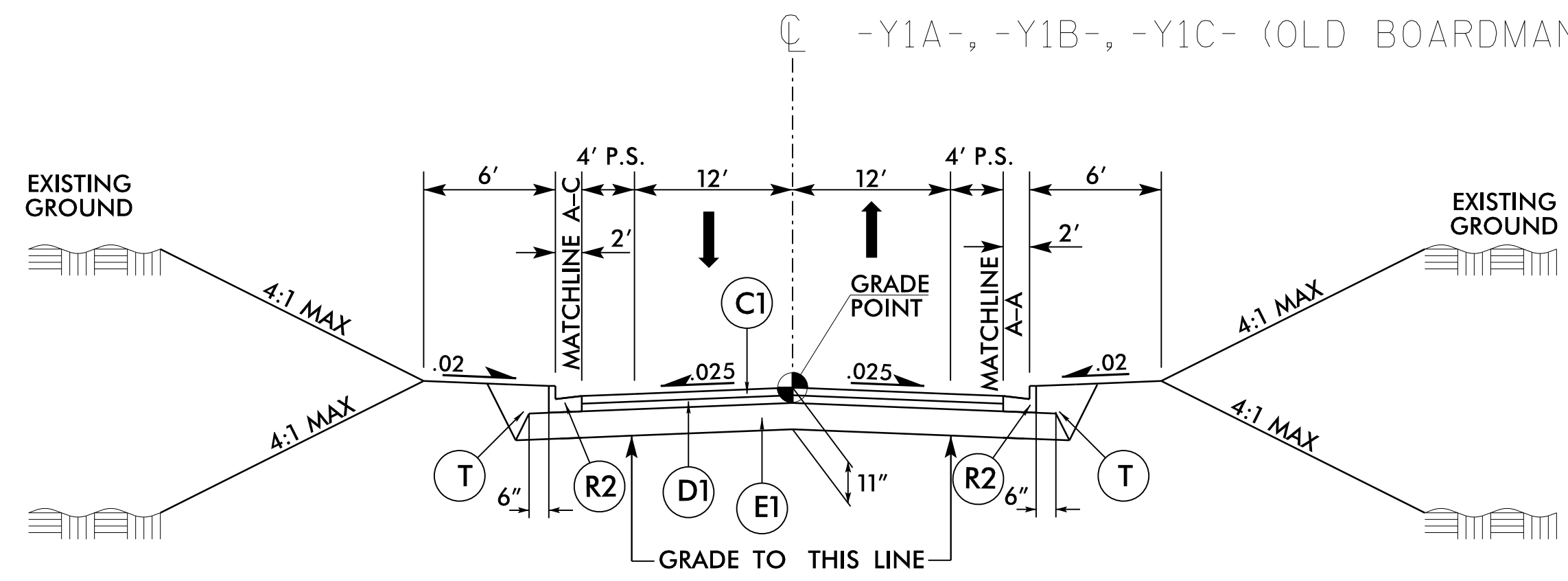
TRANSPORTATION PLANNING/DESIGN - BRIDGE/STRUCTURE DESIGN  
CIVIL/SITE DESIGN - GIS/GPS - CONSTRUCTION OBSERVATION

SINCE 1881 **Prepared in the Office of:**  
 **FROEHLING & ROBERTSON, INC.**  
Engineering Stability Since 1881  
310 Hubert Street  
Raleigh, North Carolina 27603-2302  
License No. F-0266  
Bus: 919.828.3441 Fax: 919.828.5751



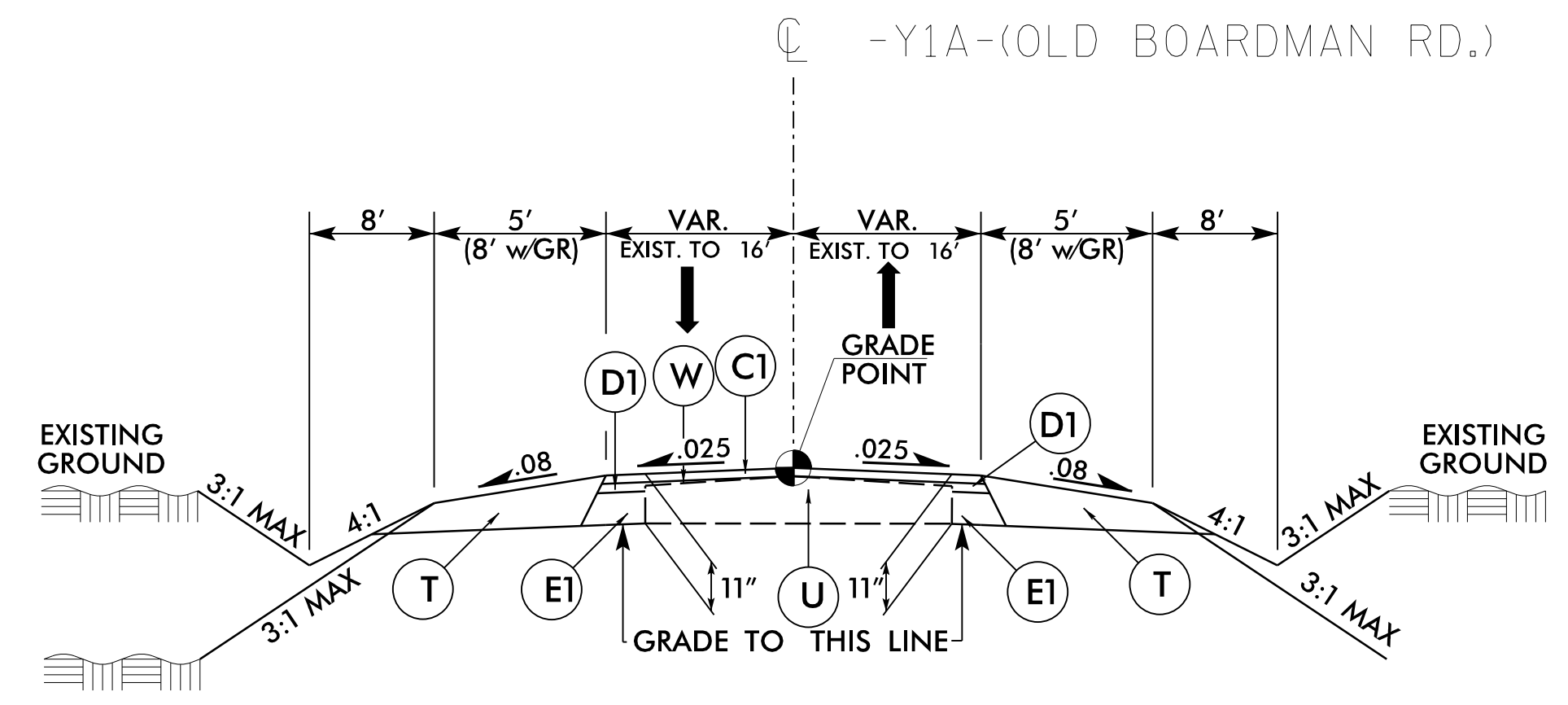
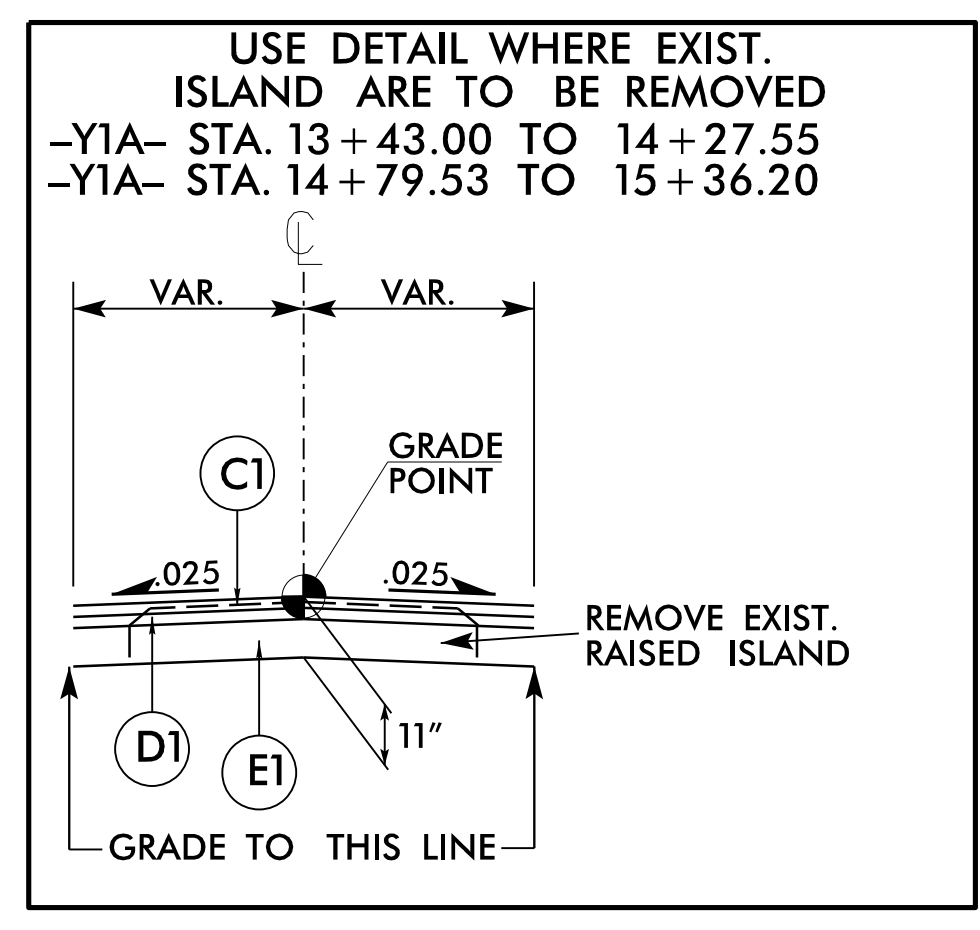
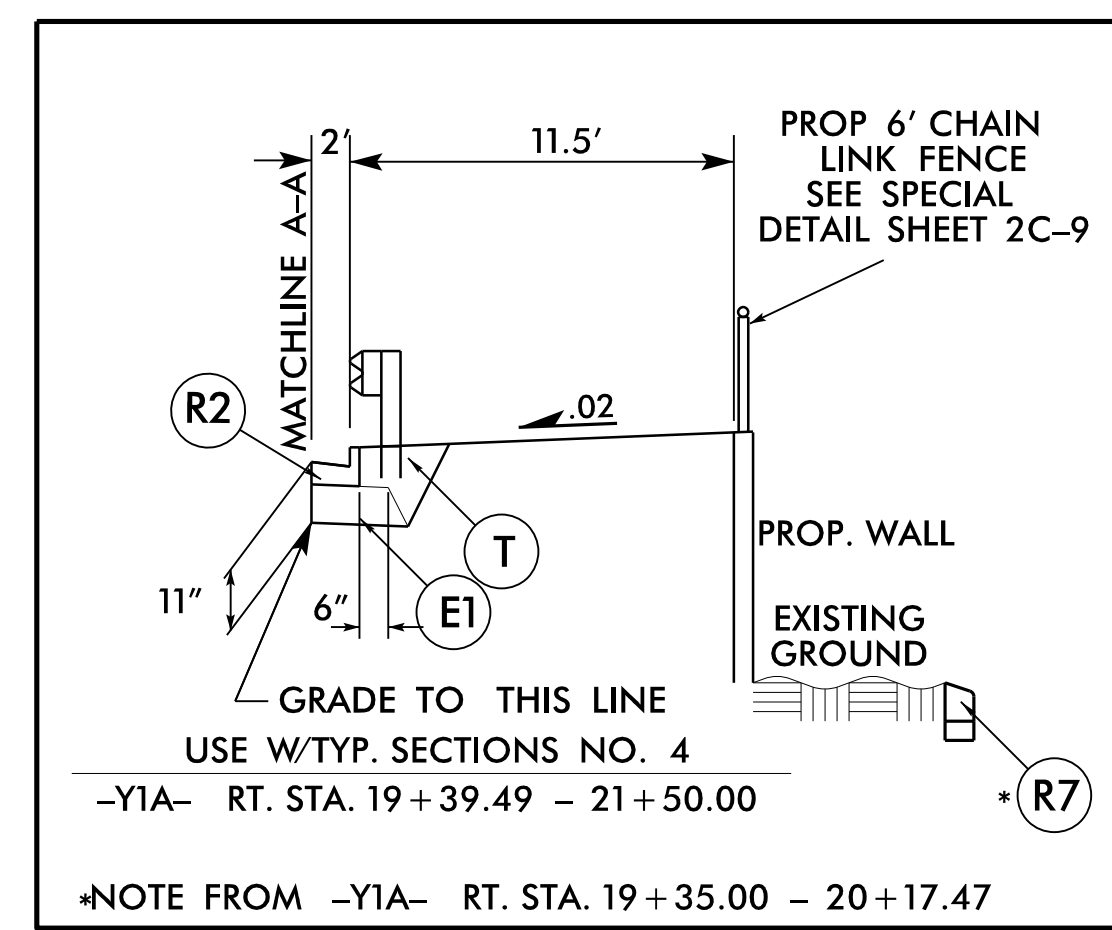
**TYPICAL SECTION NO. 3**

USE TYPICAL SECTION NO. 3  
-L- STA. 14+88.04 TO STA. 65+64.95



**TYPICAL SECTION NO. 4**

USE TYPICAL SECTION NO. 4  
-Y1A- STA. 14+75.00 TO STA. 25+33.61  
-Y1B- STA. 26+97.86 TO STA. 29+65.58 (BEGIN BRIDGE)  
-Y1C- STA. 31+66.08 (END BRIDGE) TO STA. 33+51.50  
-Y1C- STA. 35+15.50 TO STA. 44+54.91



**TYPICAL SECTION NO. 5**

USE TYPICAL SECTION NO. 5  
-Y1A- STA. 11+00.00 TO STA. 14+75.00

PAVMT. SCHEDULE (FINAL)	
C1	3" S9.5B
C2	VAR. S9.5B
C3	3" S9.5C
C4	VAR. S9.5C
D1	4" I19.0C
D2	VAR. I19.0C
E1	4" B25.0C
E2	5 1/2" B25.0C
E3	VAR. B25.0C
J1	6" ABC
J2	8" ABC
R1	1'-6" C&G
R2	2'-6" C&G
R3	12" CON. TRK. APR.
R4	8"X18" CONC. CURB
R5	EXPRESSWAY GUTTER
R6	SHLD. BERM GUTTER
R7	9"X12" CONC. CURB
R8	4" CONC. ISLAND COVER
R9	5" MONO. ISLAND (KEYED IN)
T	EARTH MAT.
U	EXIST. PAV.
V1	INC. MILLING
W	VAR. DEPTH. PAV.
X	ARTIFICIAL TURF
Y	MILLED RUM. STRIPS