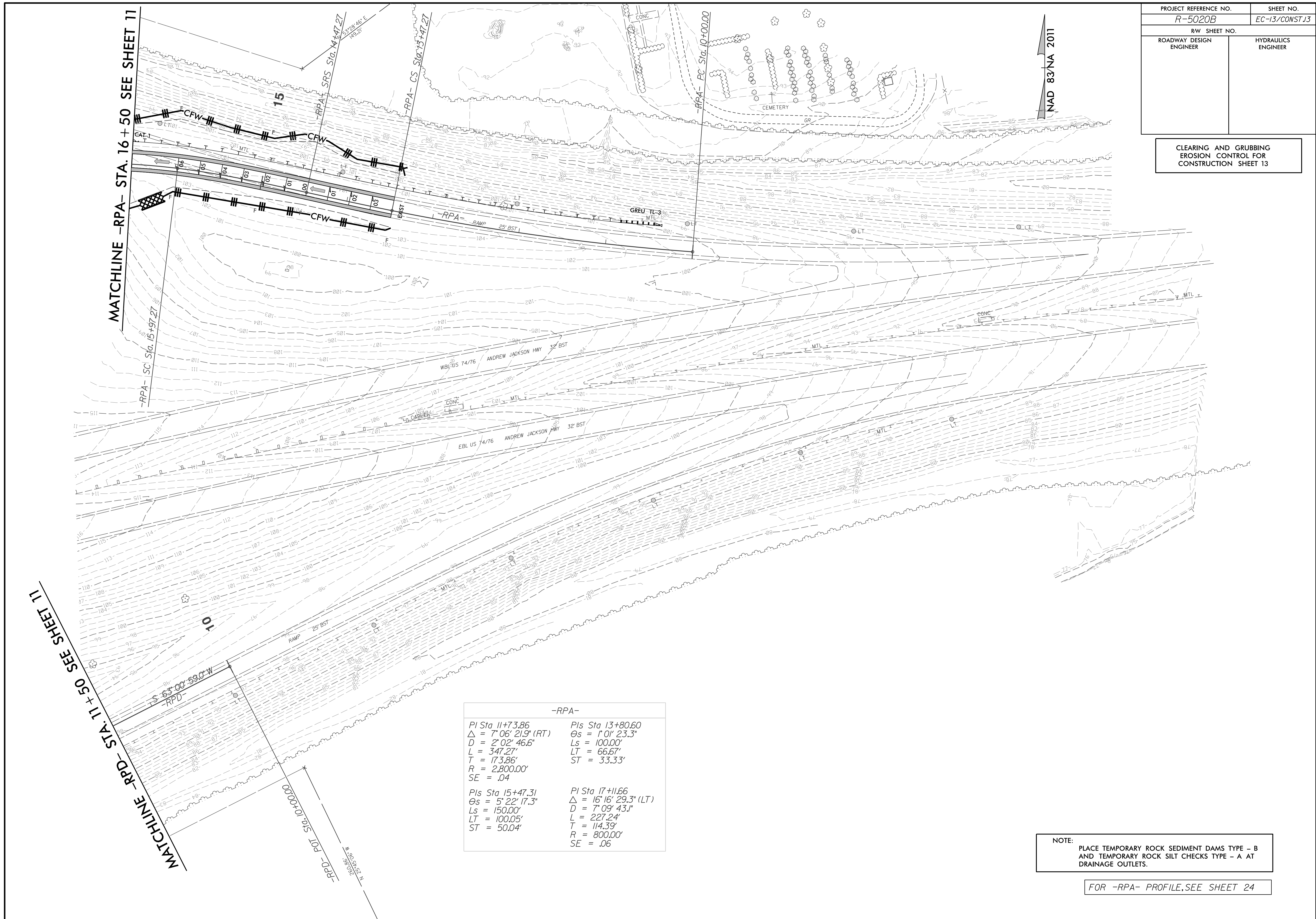


PROJECT REFERENCE NO. <i>R-5020B</i>	SHEET NO. <i>EC-13/CONST.13</i>
RW SHEET NO.	
ROADWAY DESIGN ENGINEER	HYDRAULICS ENGINEER

CLEARING AND GRUBBING
EROSION CONTROL FOR
CONSTRUCTION SHEET 13



-RPA-	
PI Sta 11+73.86	PIs Sta 13+80.60
$\Delta = 7^{\circ} 06' 21.9"$ (RT)	$\Theta_s = 1^{\circ} 01' 23.3"$
$D = 2^{\circ} 02' 46.6"$	$L_s = 100.00'$
$L = 347.27'$	$LT = 66.67'$
$T = 173.86'$	$ST = 33.33'$
$R = 2,800.00'$	
$SE = .04$	
PIs Sta 15+47.31	PI Sta 17+11.66
$\Theta_s = 5^{\circ} 22' 17.3"$	$\Delta = 16^{\circ} 16' 29.3"$ (LT)
$L_s = 150.00'$	$D = 7^{\circ} 09' 43.1"$
$LT = 100.05'$	$L = 227.24'$
$ST = 50.04'$	$T = 114.39'$
	$R = 800.00'$
	$SE = .06$

NOTE:
PLACE TEMPORARY ROCK SEDIMENT DAMS TYPE - B
AND TEMPORARY ROCK SILT CHECKS TYPE - A AT
DRAINAGE OUTLETS.

FOR -RPA- PROFILE, SEE SHEET 24