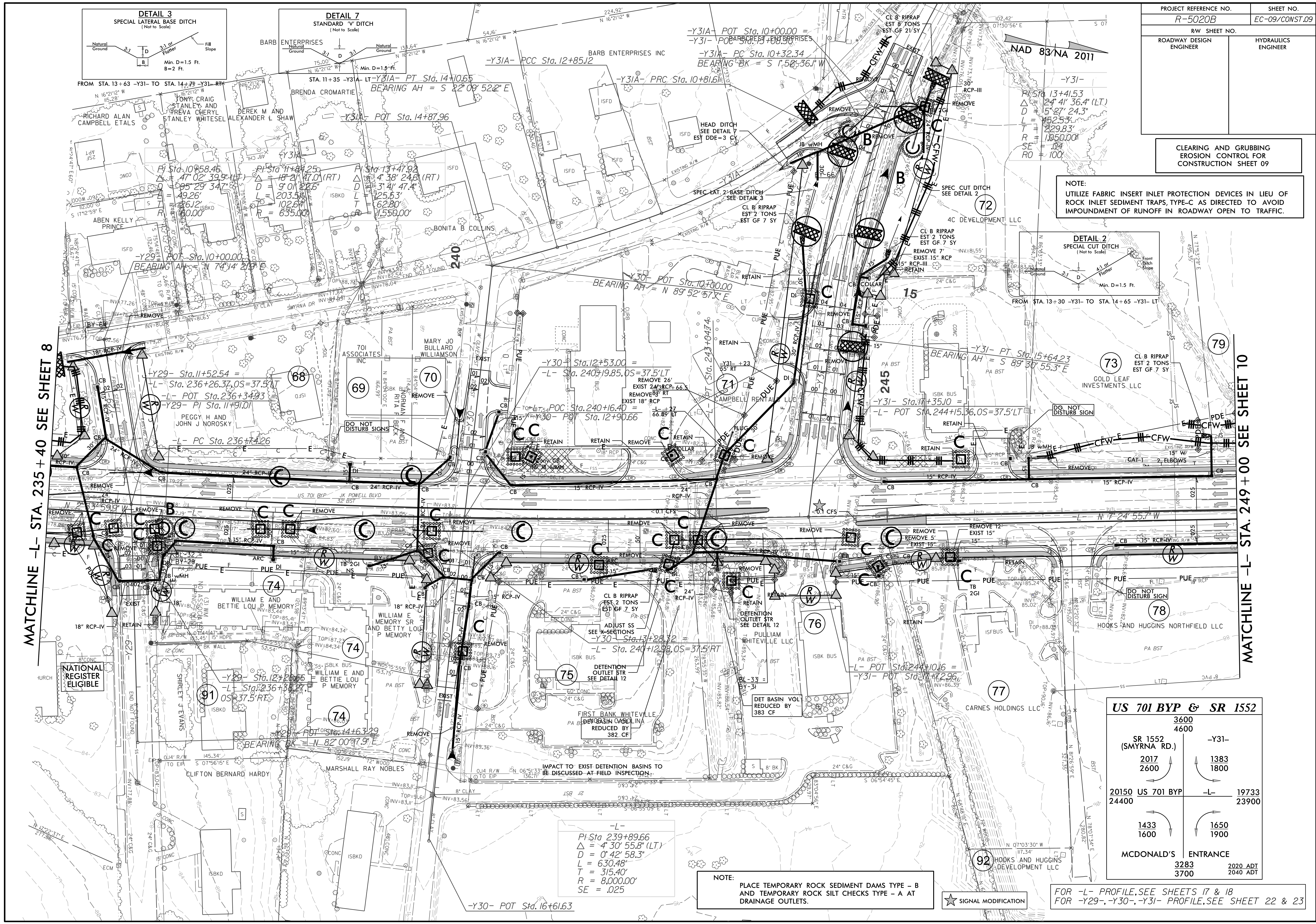


| | |
|-------------------------|---------------------|
| PROJECT REFERENCE NO. | SHEET NO. |
| R-5020B | EC-09/CONST.09 |
| RW SHEET NO. | |
| ROADWAY DESIGN ENGINEER | HYDRAULICS ENGINEER |

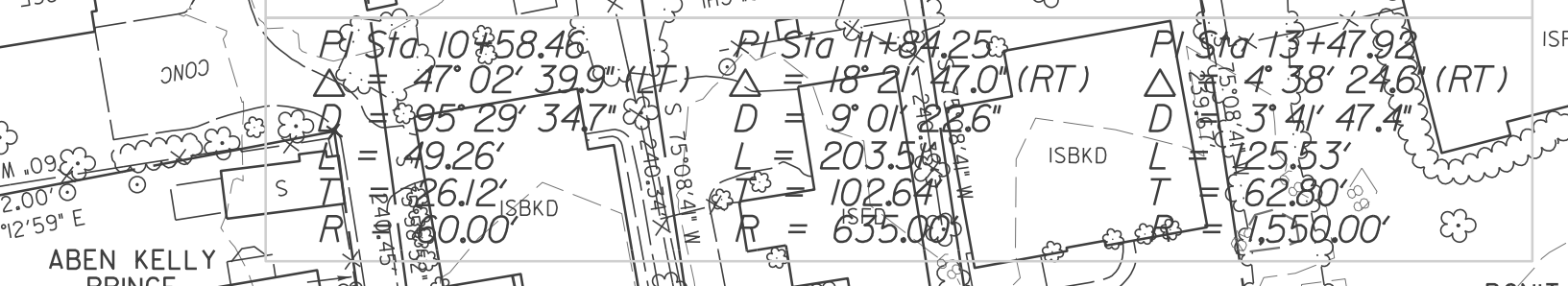
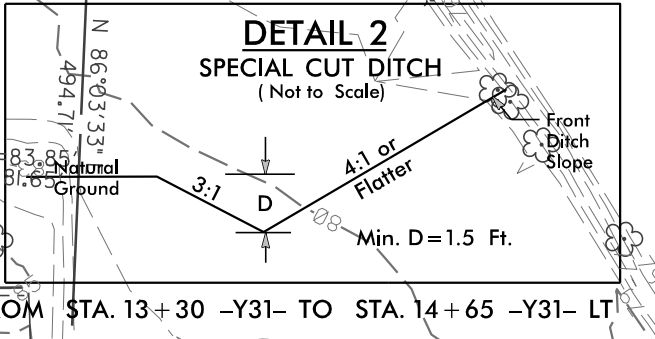
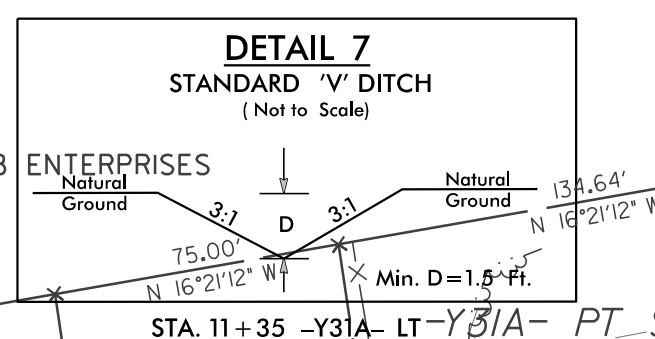
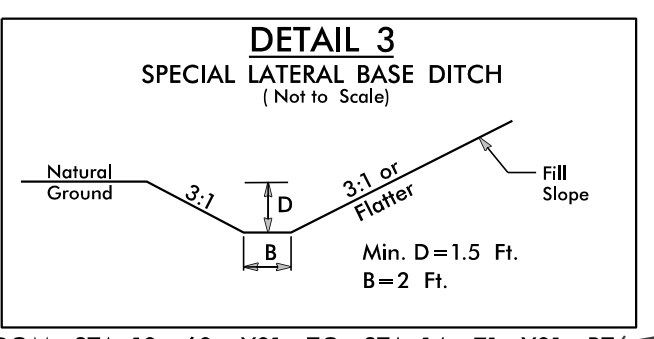
CLEARING AND GRUBBING
EROSION CONTROL FOR
CONSTRUCTION SHEET 09

NOTE:
UTILIZE FABRIC INSERT INLET PROTECTION DEVICES IN LIEU OF
ROCK INLET SEDIMENT TRAPS, TYPE-C AS DIRECTED TO AVOID
IMPOUNDMENT OF RUNOFF IN ROADWAY OPEN TO TRAFFIC.



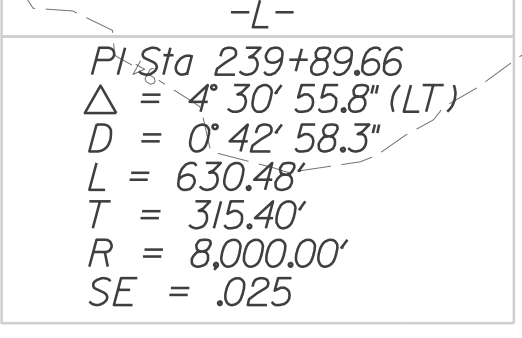
MATCHLINE -L- STA. 235 + 40 SEE SHEET 8

MATCHLINE -L- STA. 249 + 00 SEE SHEET 10



US 701 BYP & SR 1552

| | | |
|----------------------|----------|-------|
| 3600 | 4600 | -Y31- |
| SR 1552 (SMYRNA RD.) | | |
| 2017 | 1383 | |
| 2600 | 1800 | |
| 20150 US 701 BYP | -L- | 19733 |
| 24400 | | 23900 |
| 1433 | 1650 | |
| 1600 | 1900 | |
| MCDONALD'S ENTRANCE | | |
| 3283 | 2020 ADT | |
| 3700 | 2040 ADT | |



NOTE:
PLACE TEMPORARY ROCK SEDIMENT DAMS - B
AND TEMPORARY ROCK SILT CHECKS TYPE - A AT
DRAINAGE OUTLETS.

★ SIGNAL MODIFICATION

FOR -L- PROFILE, SEE SHEETS 17 & 18
FOR -Y29-, -Y30-, -Y31- PROFILE, SEE SHEET 22 & 23