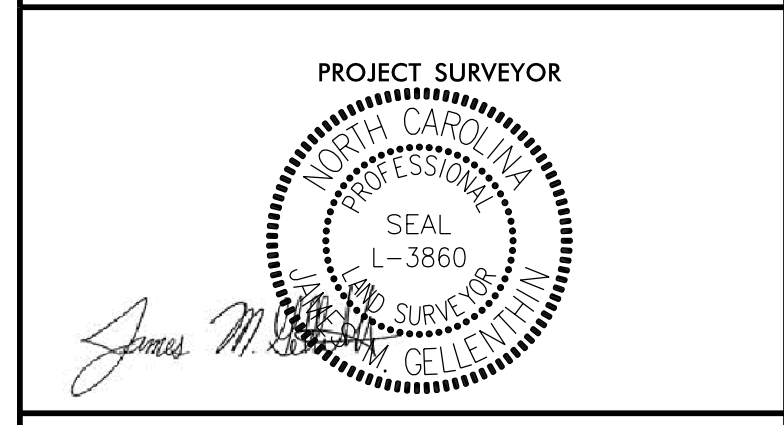


Location and Surveys

KCI Associates of N.C., P.A.
4505 Falls of Neuse Rd, Suite 400
Raleigh, NC 27609
Phone (919) 783-9214



DOCUMENT NOT CONSIDERED FINAL UNLESS ALL SIGNATURES COMPLETED

I, JAMES M GELLENTHIN, certify that the right of way and permanent easement monumentation for this project shown herein was completed under my direct and responsible charge from an actual survey made under my supervision; that all horizontal closures had a minimum ratio of precision of 1:10,000 (Class A). Field work was performed from 03-16-2020 to 03-19-2020, and all coordinates are based on NAD83/2011; That this survey was performed to meet the requirements of 21NCAC 56.1600 as applicable.
This 16TH day of APRIL 2020
Professional Land Surveyor L-3860

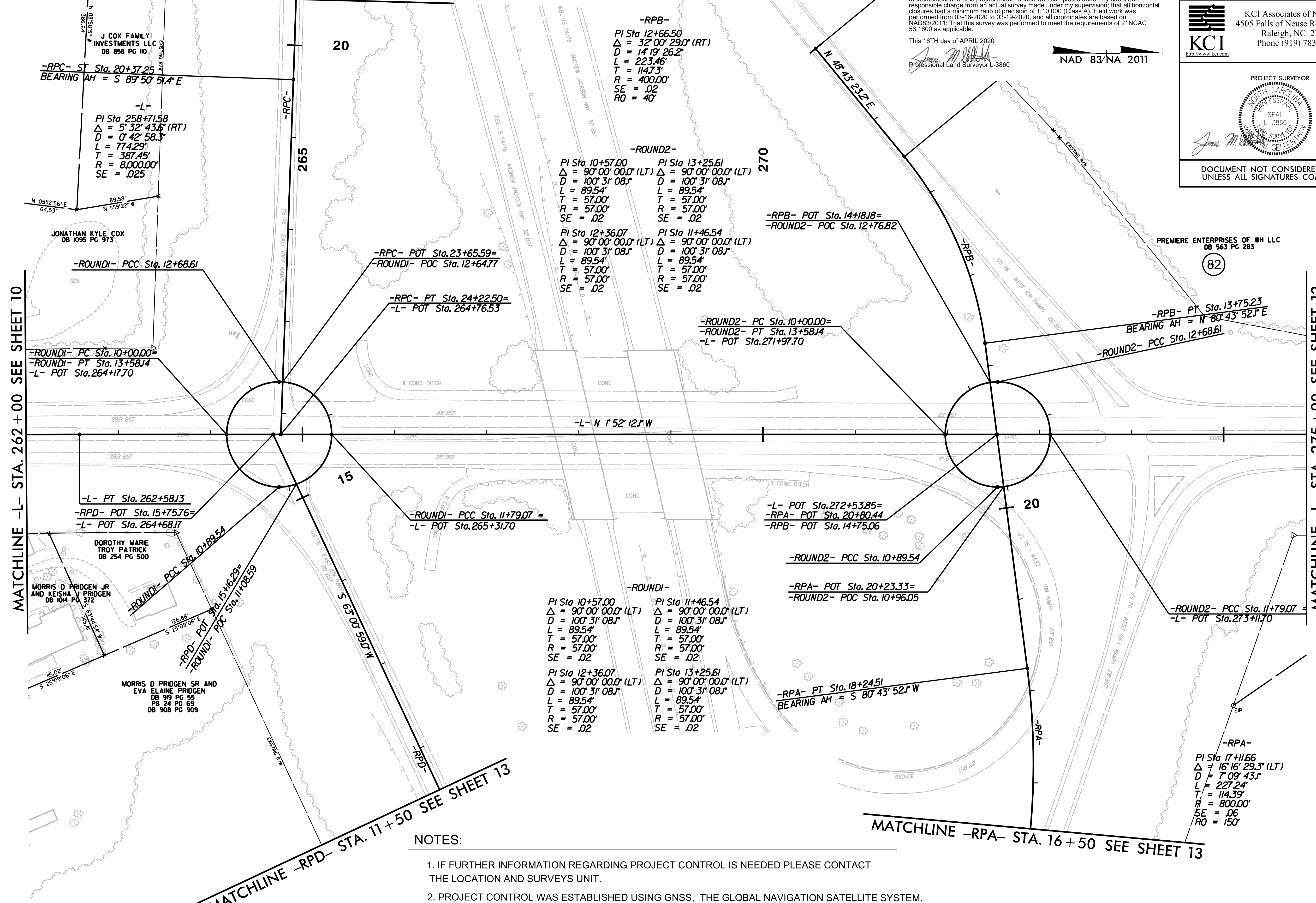


MATCHLINE -RPC- STA. 19+50 SEE SHEET 14

MATCHLINE -L- STA. 262+00 SEE SHEET 10

MATCHLINE -RPD- STA. 11+50 SEE SHEET 13

MATCHLINE -L- STA. 275+90 SEE SHEET 12



-RPB-
PI Sta 12+66.50
Δ = 32° 00' 29.0" (RT)
D = 14' 19' 26.2"
L = 223.46'
T = 114.73'
R = 400.00'
SE = .02
RO = 40'

-ROUND2-
PI Sta 10+57.00 Δ = 90° 00' 00.0" (LT) D = 100' 31' 08.1" L = 89.54' T = 57.00' R = 57.00' SE = .02
PI Sta 13+25.61 Δ = 90° 00' 00.0" (LT) D = 100' 31' 08.1" L = 89.54' T = 57.00' R = 57.00' SE = .02
PI Sta 12+36.07 Δ = 90° 00' 00.0" (LT) D = 100' 31' 08.1" L = 89.54' T = 57.00' R = 57.00' SE = .02
PI Sta 11+46.54 Δ = 90° 00' 00.0" (LT) D = 100' 31' 08.1" L = 89.54' T = 57.00' R = 57.00' SE = .02

-L-
PI Sta 258+71.58
Δ = 5° 32' 43.6" (RT)
D = 0' 42' 58.3"
L = 774.29'
T = 387.45'
R = 8,000.00'
SE = .025

-ROUND1- PCC Sta. 12+68.61
-ROUND1- PT Sta. 13+58.14
-L- POT Sta. 264+17.70

-RPC- POT Sta. 23+65.59=
-ROUND1- POC Sta. 12+64.77
-RPC- PT Sta. 24+22.50=
-L- POT Sta. 264+76.53

-RPB- POT Sta. 14+18.18=
-ROUND2- POC Sta. 12+76.82

-ROUND2- PC Sta. 10+00.00=
-ROUND2- PT Sta. 13+58.14
-L- POT Sta. 271+97.70

-RPB- PT Sta. 13+75.23
BEARING AH = N 80° 43' 52.1" E
-ROUND2- PCC Sta. 12+68.61

-L- PT Sta. 262+58.13
-RPD- POT Sta. 15+75.76=
-L- POT Sta. 264+68.17

-ROUND1- PCC Sta. 11+79.07 =
-L- POT Sta. 265+31.70

-L- POT Sta. 272+53.85=
-RPA- POT Sta. 20+80.44
-RPB- POT Sta. 14+75.06

-ROUND2- PCC Sta. 10+89.54

-RPA- POT Sta. 20+23.33=
-ROUND2- POC Sta. 10+96.05

-ROUND1-
PI Sta 10+57.00 Δ = 90° 00' 00.0" (LT) D = 100' 31' 08.1" L = 89.54' T = 57.00' R = 57.00' SE = .02
PI Sta 11+46.54 Δ = 90° 00' 00.0" (LT) D = 100' 31' 08.1" L = 89.54' T = 57.00' R = 57.00' SE = .02

PI Sta 12+36.07 Δ = 90° 00' 00.0" (LT) D = 100' 31' 08.1" L = 89.54' T = 57.00' R = 57.00' SE = .02
PI Sta 13+25.61 Δ = 90° 00' 00.0" (LT) D = 100' 31' 08.1" L = 89.54' T = 57.00' R = 57.00' SE = .02

-RPA- PT Sta. 18+24.51
BEARING AH = S 80° 43' 52.1" W

-ROUND2- PCC Sta. 11+79.07 =
-L- POT Sta. 273+11.70

-RPA-
PI Sta 17+11.66
Δ = 16° 16' 29.3" (LT)
D = 7' 09' 43.1"
L = 227.24'
T = 114.39'
R = 800.00'
SE = .06
RO = 150'

NOTES:

1. IF FURTHER INFORMATION REGARDING PROJECT CONTROL IS NEEDED PLEASE CONTACT THE LOCATION AND SURVEYS UNIT.
2. PROJECT CONTROL WAS ESTABLISHED USING GNSS, THE GLOBAL NAVIGATION SATELLITE SYSTEM.
3. RIGHT OF WAY MONUMENTATION ESTABLISHED 03-16-2020 TO 03-19-2020 .

REVISIONS

6/2/19 15:15:20 2020 08:47 NCDOT - Survey\A-R5020B RW Station\DRAWINGS\5020B-1s-rw11.dgn 15:15:20 2020 08:47 NCDOT - Survey\A-R5020B RW Station\DRAWINGS\5020B-1s-rw11.dgn