
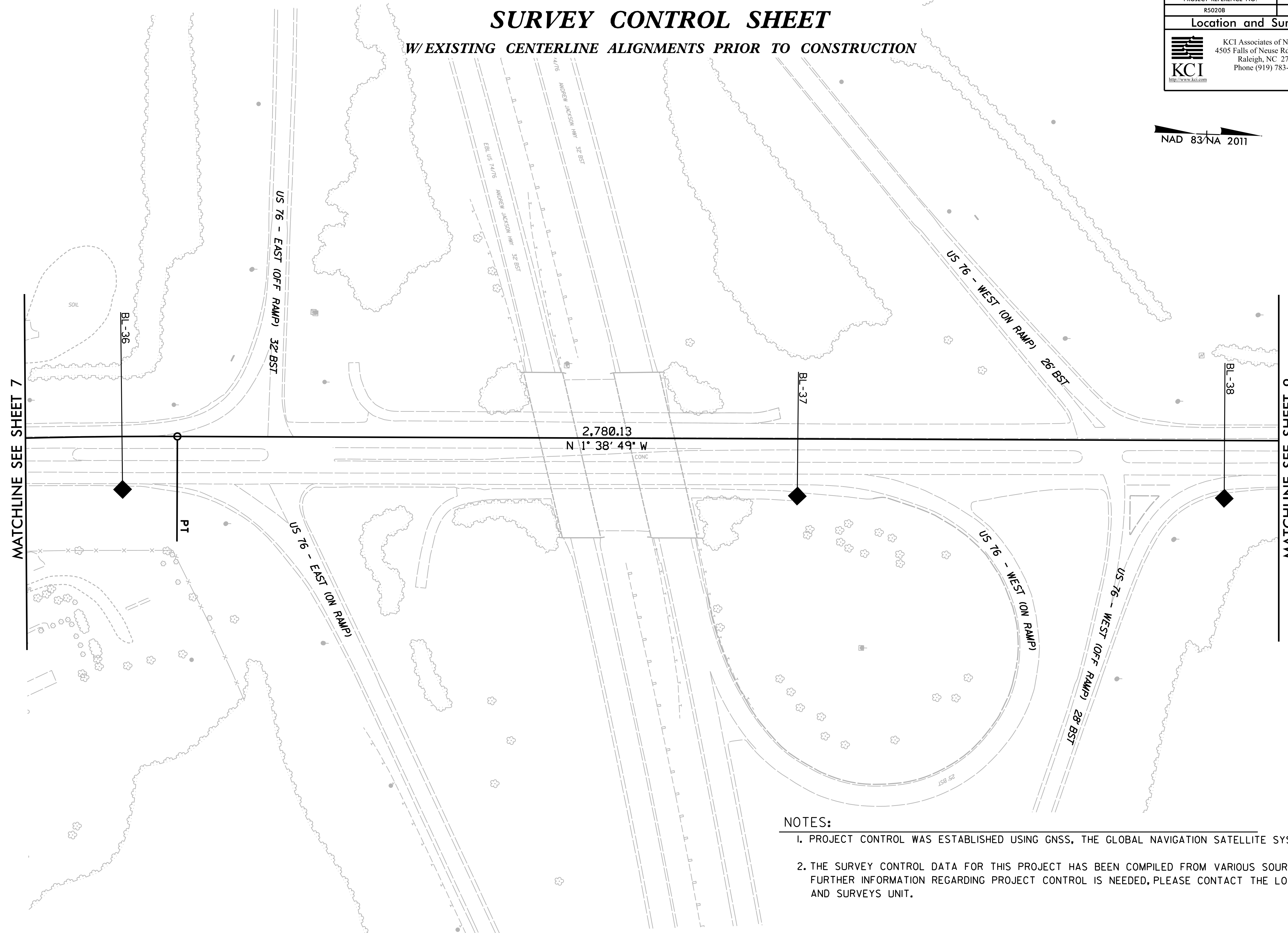
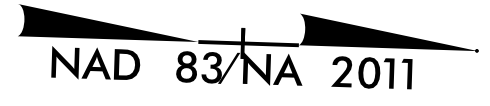


PROJECT REFERENCE NO.	SHEET NO.
R5020B	RW02C-8
Location and Surveys	
 KCI Associates of N.C., P.A. 4505 Falls of Neuse Rd, Suite 400 Raleigh, NC 27609 Phone (919) 783-9214 http://www.kci.com	

SURVEY CONTROL SHEET

W/ EXISTING CENTERLINE ALIGNMENTS PRIOR TO CONSTRUCTION



MATCHLINE SEE SHEET 7

MATCHLINE SEE SHEET 9

NOTES:

1. PROJECT CONTROL WAS ESTABLISHED USING GNSS, THE GLOBAL NAVIGATION SATELLITE SYSTEM.
2. THE SURVEY CONTROL DATA FOR THIS PROJECT HAS BEEN COMPILED FROM VARIOUS SOURCES. IF FURTHER INFORMATION REGARDING PROJECT CONTROL IS NEEDED, PLEASE CONTACT THE LOCATION AND SURVEYS UNIT.

6/2/09

REVISIONS

I6-APR-2020 15:55
 C:\Users\matthew.koss\Desktop\DRAWINGS\5020B\1s-rw02c-8.dgn
 matthew.koss AT 12-2XXPIG2