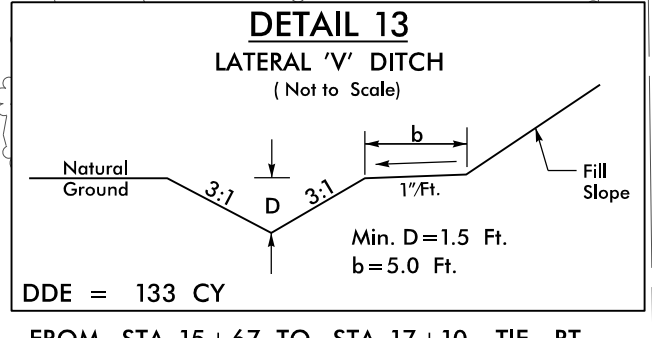
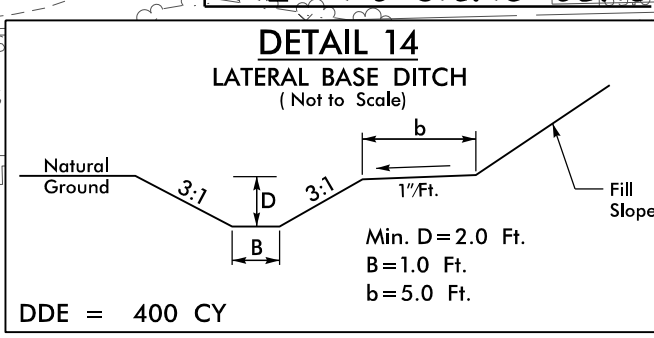
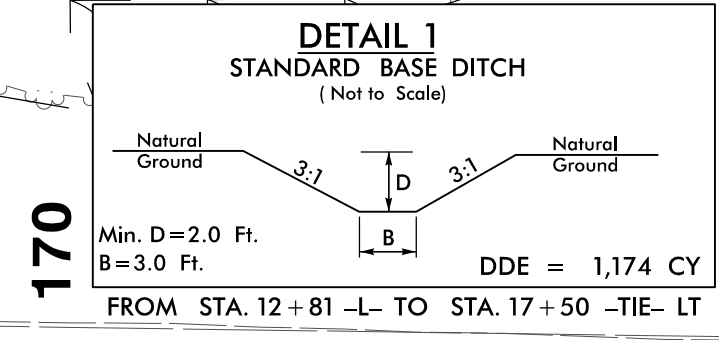
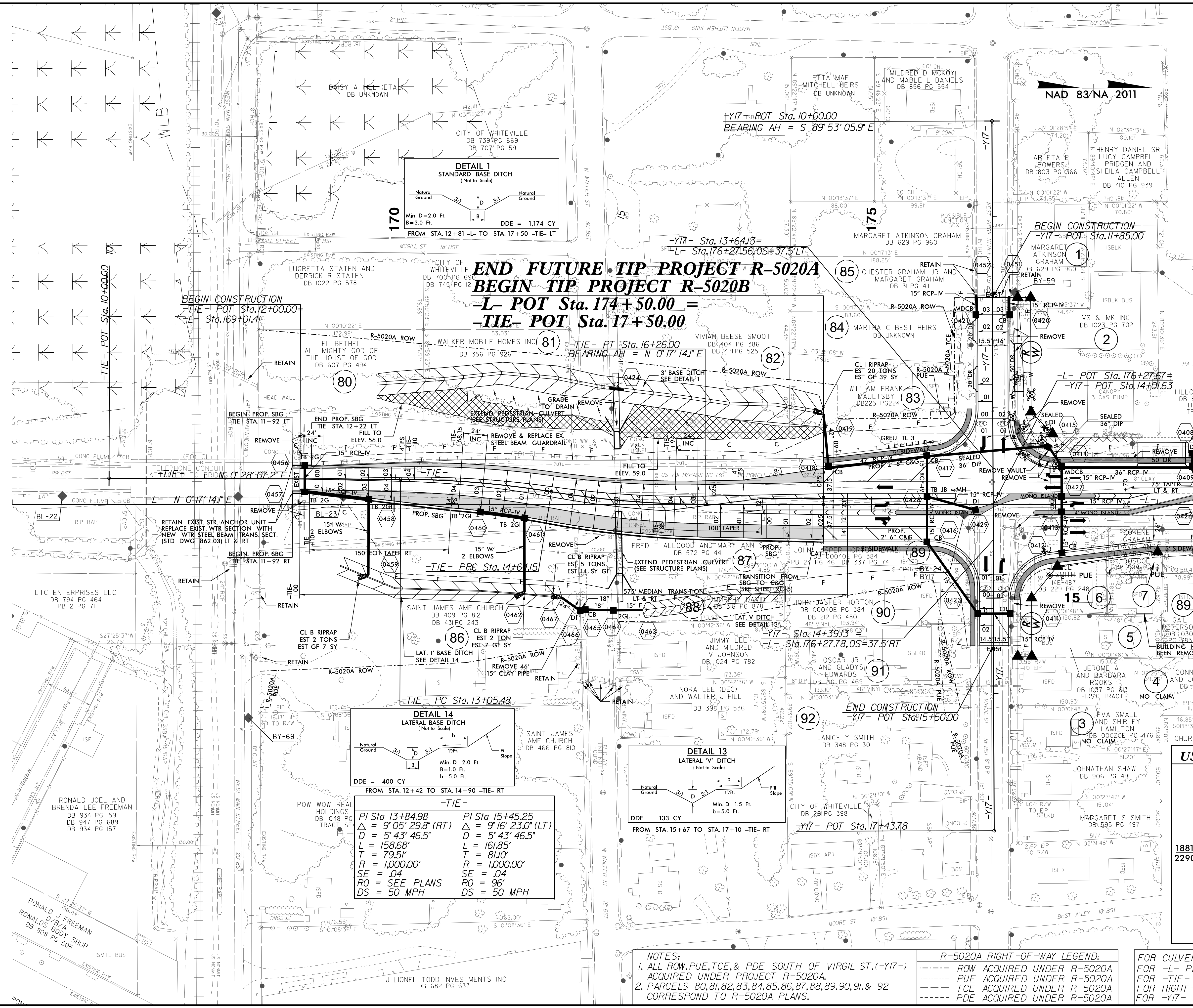


8.17.799  
23-FEB-2021 16:19 NCDDOT R-5020B US 701 Widening\Roadway\Proj\R-5020B\_Rdu\_psh\_4.dgn

PROJECT REFERENCE NO. <b>R-5020B</b>	SHEET NO. <b>4</b>
RW SHEET NO.	
ROADWAY DESIGN ENGINEER 	HYDRAULICS ENGINEER 
DOCUMENT NOT CONSIDERED FINAL UNLESS ALL SIGNATURES COMPLETED	
KCI Engineers • Planners • Scientists • Construction Managers 4505 Falls of Neuse Road, Suite 400 Raleigh, NC 27609-6270 Phone (919) 783-9214 • Fax (919) 783-9266	
SUNGATE DESIGN GROUP, P.A. 800 JONES FRANKLIN ROAD RALEIGH, NORTH CAROLINA 27606 TEL (919) 859-2243 FAX (919) 859-6258 ENG. REG. LICENSE NO. C-4000	



**-TIE-**

PI Sta 13+84.98 $\Delta = 9' 05" 29.8" (RT)$ $D = 5' 43" 46.5"$ $L = 158.68'$ $T = 79.51'$ $R = 1,000.00'$ $SE = .04$ $RO = SEE PLANS$ $DS = 50 MPH$	PI Sta 15+45.25 $\Delta = 9' 16" 23.0" (LT)$ $D = 5' 43" 46.5"$ $L = 161.85'$ $T = 81.0'$ $R = 1,000.00'$ $SE = .04$ $RO = 96'$ $DS = 50 MPH$
--	---

**US 701 BYP & SR 1437**

3600	4600	-Y17-
SR 1437 (VIRGIL ST.)	1500	983
2000	2000	1400
18817	US 701 BYP	18483
22900		22400
833	1017	-Y17-
1000	1100	
SR 1437 (VIRGIL ST.)	2967	2020 ADT
3300	3300	2040 ADT

**NOTES:**  
 1. ALL ROW, PUE, TCE, & PDE SOUTH OF VIRGIL ST. (-Y17-) ACQUIRED UNDER PROJECT R-5020A.  
 2. PARCELS 80, 81, 82, 83, 84, 85, 86, 87, 88, 89, 90, 91, & 92 CORRESPOND TO R-5020A PLANS.

**R-5020A RIGHT-OF-WAY LEGEND:**  
 --- ROW ACQUIRED UNDER R-5020A  
 --- PUE ACQUIRED UNDER R-5020A  
 --- TCE ACQUIRED UNDER R-5020A  
 --- PDE ACQUIRED UNDER R-5020A

FOR CULVERT PLANS, SEE SHEETS CI-1 TO CI-4  
 FOR -L- PROFILE, SEE SHEET 15  
 FOR -TIE- PROFILE, SEE SHEET 23  
 FOR RIGHT-OF-WAY DATA, SEE SHEET RW-4  
 FOR -Y17- INTERSECTION DETAIL, SEE SHEET 2B-3

MATCHLINE -L- STA. 180+00 SEE SHEET 5