

PLAN

NOTES

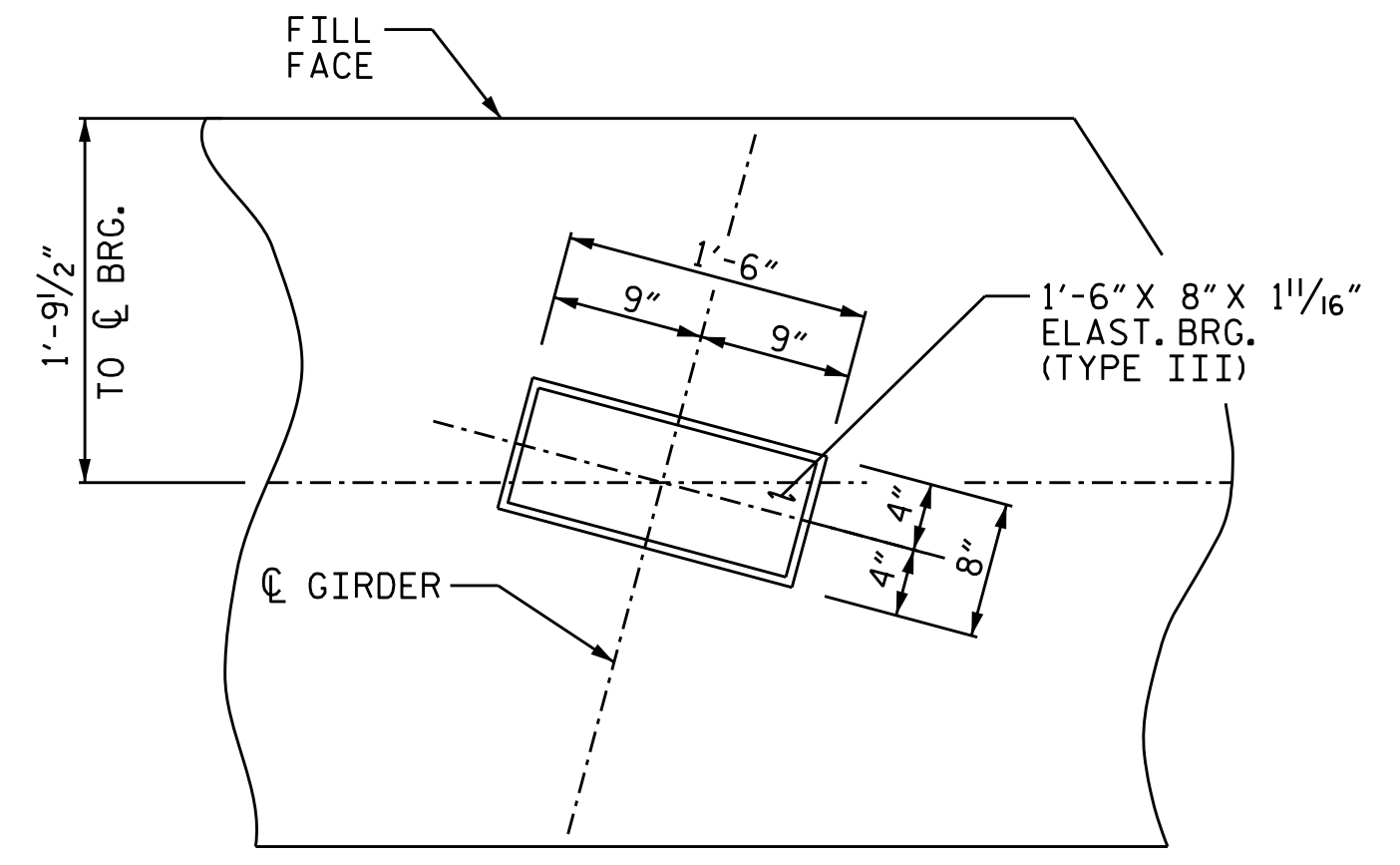
APPLY AN 8 MIL THICK 1350 ALUMINUM (W-AL-1350) THERMAL SPRAY COATING WITH A 0.5 MIL THICK SEAL COAT TO THE PILES, IN ACCORDANCE WITH THE THERMAL SPRAYED COATINGS SPECIAL PROVISION AND SECTION 442 OF THE STANDARD SPECIFICATIONS. FOR THERMAL SPRAYED COATINGS, SEE SPECIAL PROVISIONS.

AFTER DRIVING THE PILES, APPLY 1 COAT EACH OF 1080-12 BROWN AND 1080-12 GRAY PAINT TO THE EMBEDDED SECTION OF THE METALLIZED PILE PRIOR TO CONCRETE EMBEDMENT IN ACCORDANCE WITH SECTION 442 OF THE STANDARD SPECIFICATIONS.

ALL REINFORCING STEEL SHALL BE EPOXY COATED.

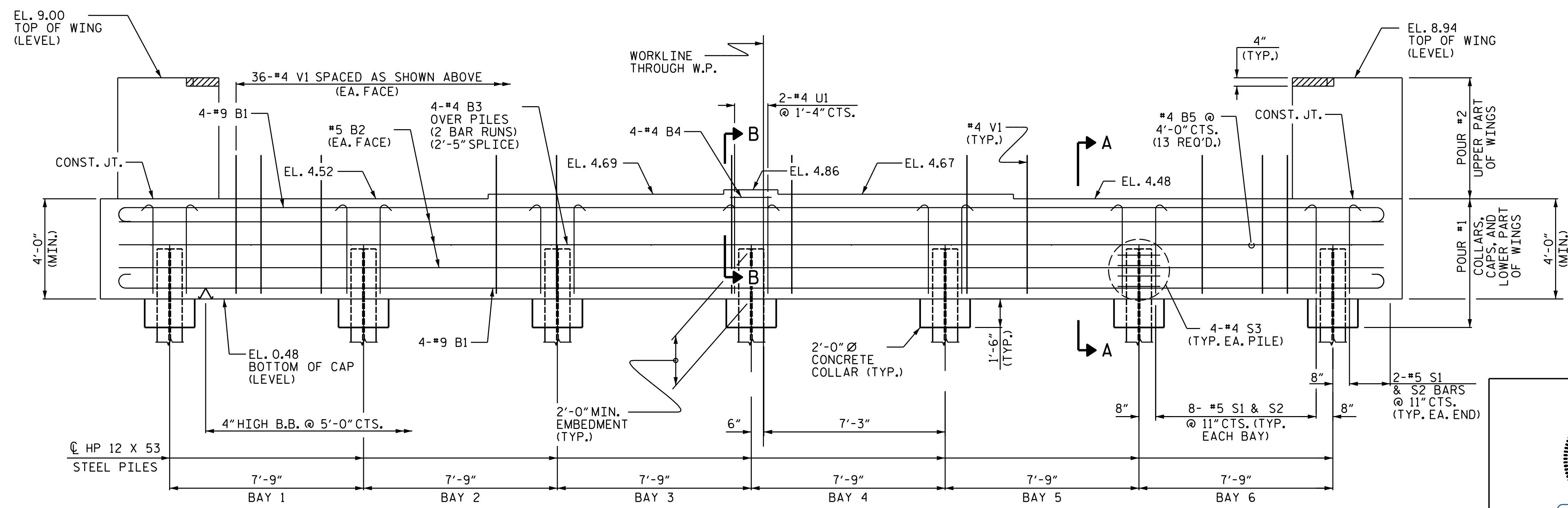
CLASS AA CONCRETE SHALL BE USED IN THE END BENTS AND SHALL CONTAIN CALCIUM NITRATE CORROSION INHIBITOR.

THE CONCRETE IN THE SHADED AREA OF THE WING SHALL BE POURED AFTER THE BARRIER RAIL IS CAST IF SLIP FORMING IS USED.



DETAIL "A"

(TYP. EA. GIRDER)

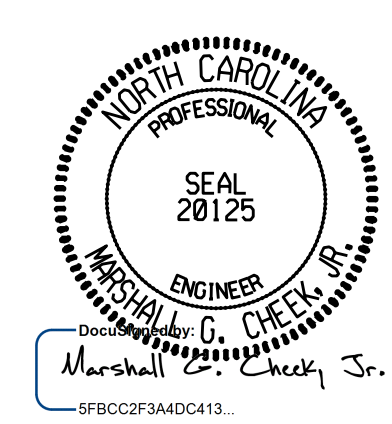


ELEVATION

WINGS NOT SHOWN FOR CLARITY

PROJECT NO. B-4414  
 BEAUFORT COUNTY  
 STATION: 24+78.90 -L-

SHEET 1 OF 3



STATE OF NORTH CAROLINA  
 DEPARTMENT OF TRANSPORTATION  
 RALEIGH  
 SUBSTRUCTURE  
 INTEGRAL  
 END BENT 2

DRAWN BY: STM DATE: 09/19  
 CHECKED BY: MGC DATE: 12/19  
 DESIGN ENGINEER OF RECORD: TBE DATE: 03/20

DOCUMENT NOT CONSIDERED FINAL UNLESS ALL SIGNATURES COMPLETED					
TGS ENGINEERS 706 HILLSBOROUGH STREET SUITE 200 RALEIGH, NC 27603 PH (919) 773-8887 CORP. LICENSE NO.: C-0275					
REVISIONS					
NO.	BY:	DATE:	NO.	BY:	DATE:
1			3		
2			4		
SHEET NO.					S-27
TOTAL SHEETS					33