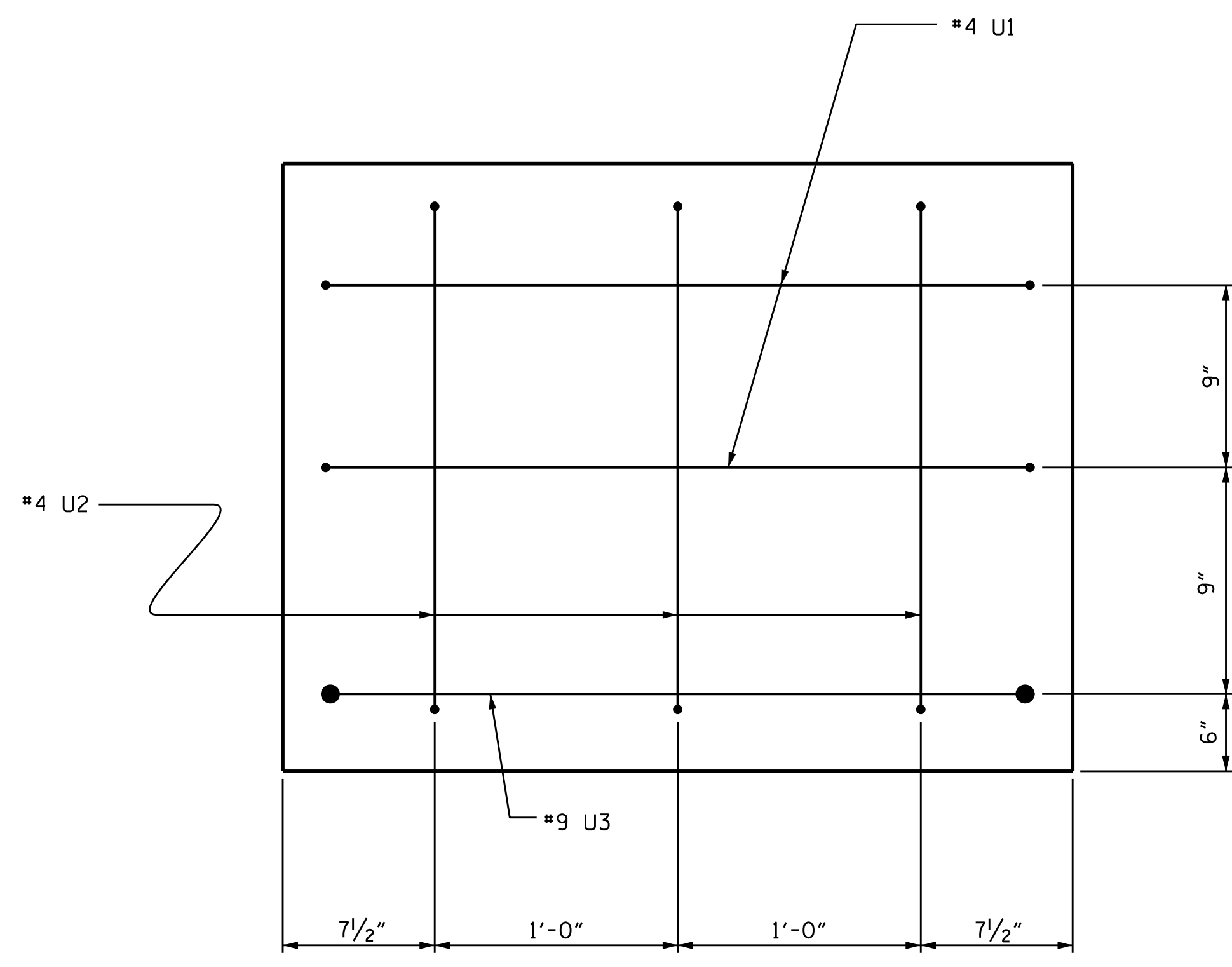
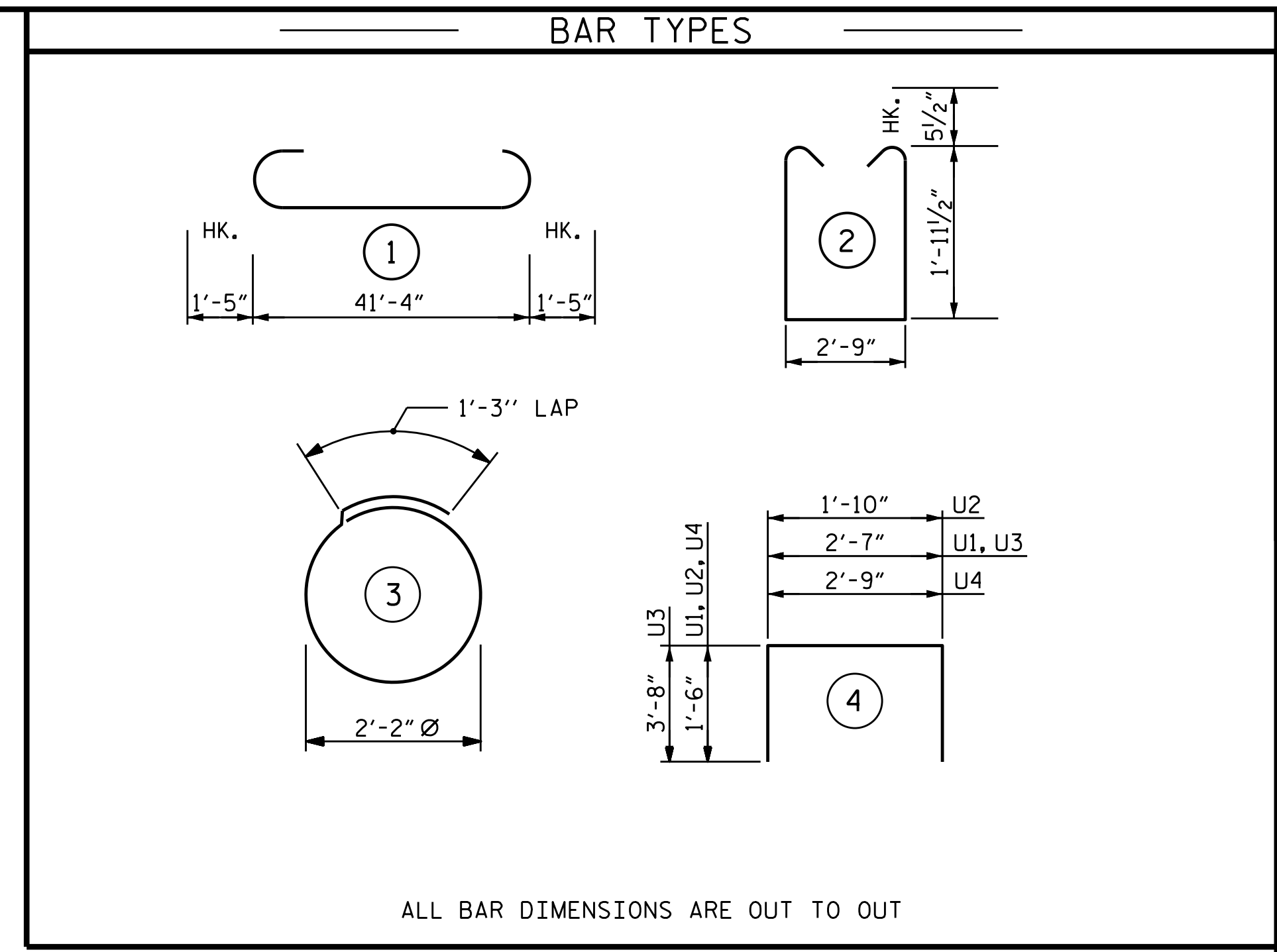


SECTION A-A



END OF CAP VIEW
(TYPICAL BOTH ENDS)



ALL BAR DIMENSIONS ARE OUT TO OUT

BILL OF MATERIAL FOR BENT No. 2					
BAR NO.	NO.	SIZE	TYPE	LENGTH	WEIGHT
*B1	4	#10	1	44'-2"	760
*B2	4	#10	STR	41'-6"	714
*B3	4	#5	STR	41'-6"	173
*B4	8	#4	STR	22'-0"	118
*B5	11	#4	STR	2'-9"	20
*B6	4	#4	STR	3'-0"	8
*S1	58	#5	2	7'-7"	459
*S2	14	#4	3	8'-2"	76
*U1	4	#4	4	5'-7"	15
*U2	6	#4	4	4'-10"	19
*U3	2	#9	4	9'-11"	67
*U4	30	#4	4	5'-9"	115

* EPOXY COATED REINFORCING STEEL 2544 LBS.

* CLASS AA CONCRETE
TOTAL CLASS AA CONCRETE 12.8 C.Y.

16" PRESTRESSED CONCRETE PILES NO. 7 315 LIN. FT.
PILE REDRIVES 4 EA.

PILE DRIVING EQUIPMENT SETUP FOR 16" PRESTRESSED CONCRETE PILES 7 EA.

* CONCRETE DISPLACED BY THE 16" PRESTRESSED CONCRETE PILES HAS BEEN DEDUCTED FROM THE CONCRETE QUANTITY.

PROJECT NO. B-4414
BEAUFORT COUNTY
STATION: 24+78.90 -L-
SHEET 2 OF 2

STATE OF NORTH CAROLINA
DEPARTMENT OF TRANSPORTATION
RALEIGH

SEAL
20125
ENGINEER
MARSHALL G. CHECK, JR.
MARSHALL G. CHECK, JR.
2/8/2021

DOCUMENT NOT CONSIDERED FINAL UNLESS ALL SIGNATURES COMPLETED

TGS ENGINEERS
706 HILLSBOROUGH STREET
SUITE 200
RALEIGH, NC 27603
PH (919) 773-8887
CORP. LICENSE NO.: C-0275

REVISIONS						SHEET NO.
NO.	BY:	DATE:	NO.	BY:	DATE:	S-26
1			3			TOTAL SHEETS
2			4			33

DRAWN BY :	ZCS	DATE :	11/19
CHECKED BY :	MGC	DATE :	11/19
DESIGN ENGINEER OF RECORD:	TBE	DATE :	03/20