

NOTES

STIRRUPS IN CAP MAY BE SHIFTED AS NECESSARY TO CLEAR ANCHOR BOLTS.

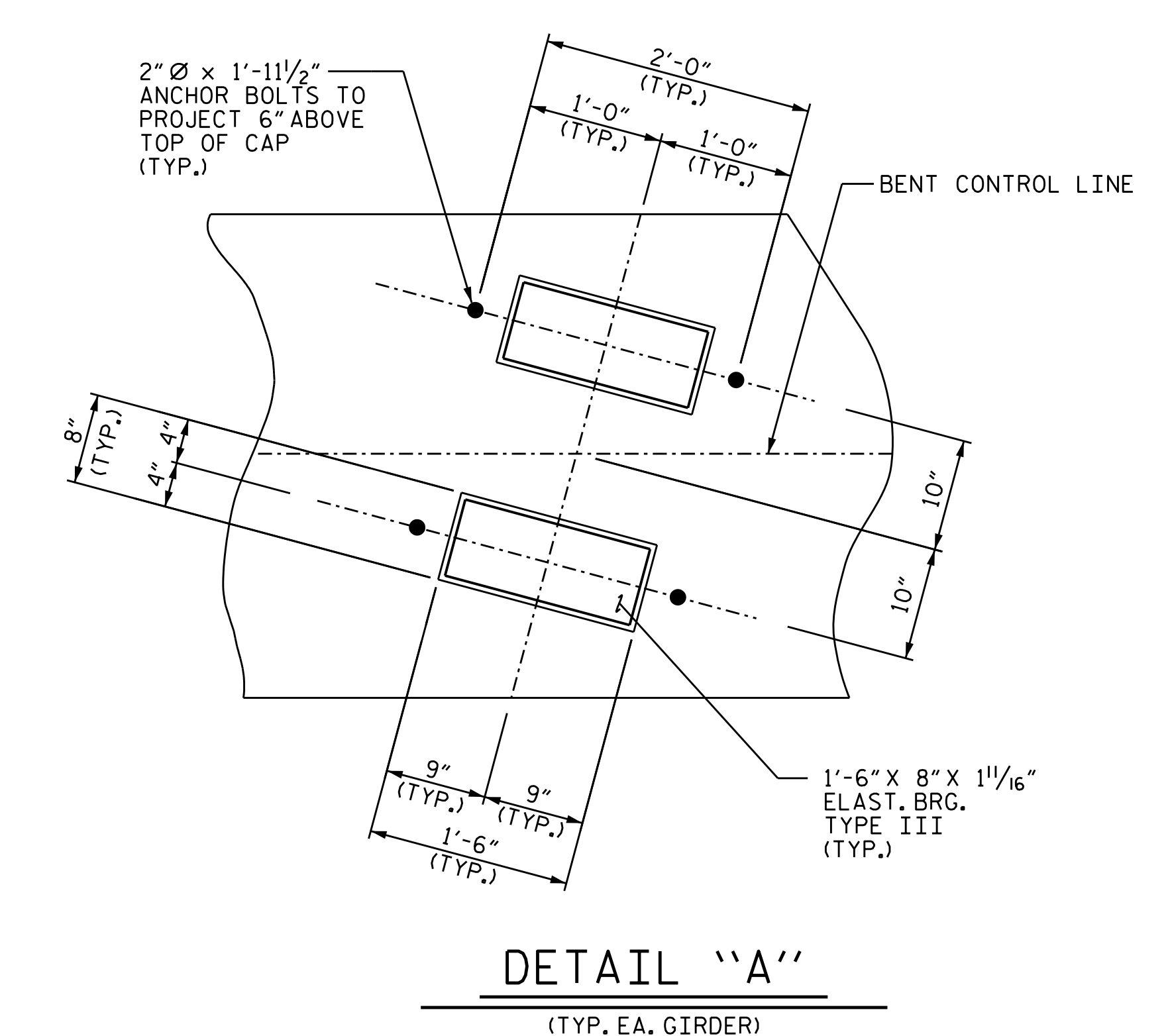
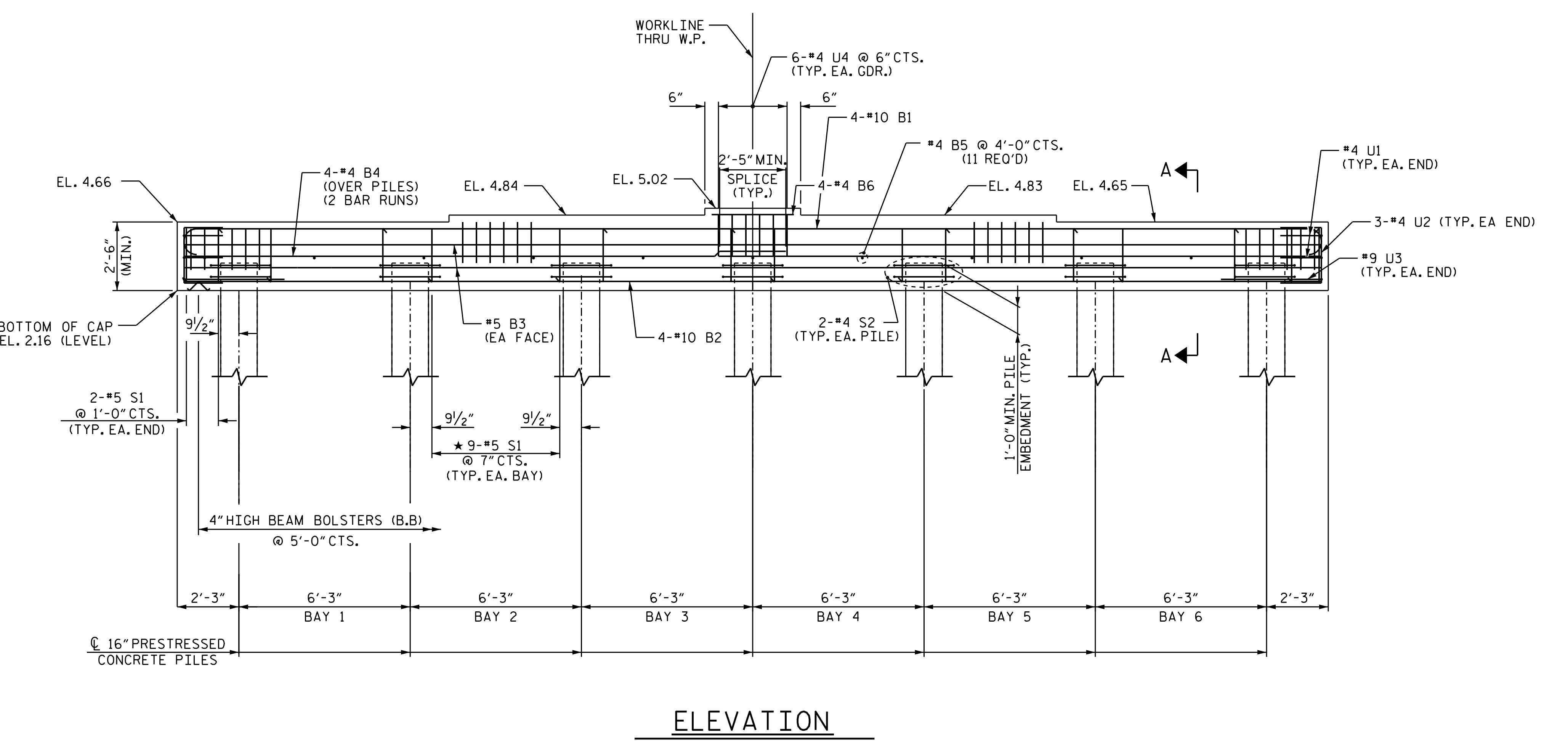
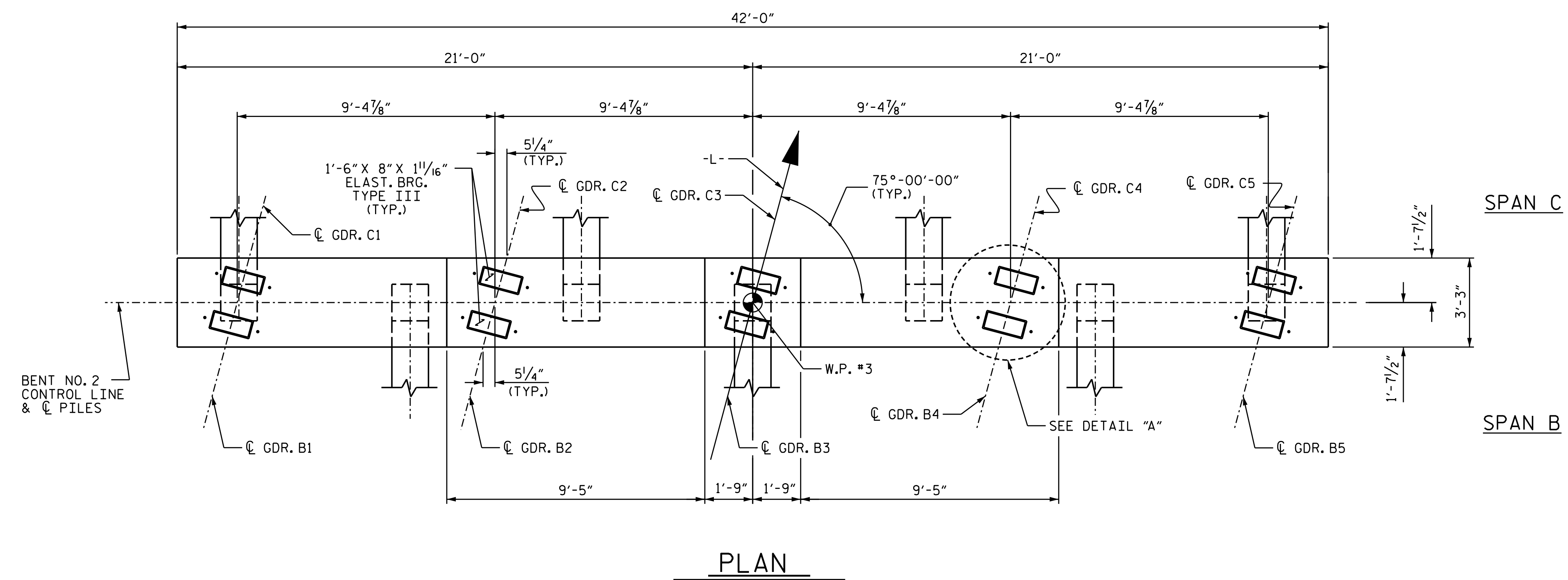
FOR SECTION A-A, SEE SHEET 2 OF 2.

★ INVERT ALTERNATE STIRRUPS.

ALL REINFORCING STEEL SHALL BE EPOXY COATED.

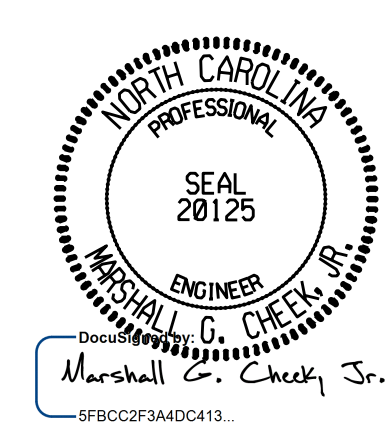
CLASS AA CONCRETE SHALL BE USED IN THE BENT CAP AND SHALL CONTAIN CALCIUM NITRATE CORROSION INHIBITOR.

ALL BAR SUPPORTS IN THE BENT CAP AND ALL INCIDENTAL REINFORCING STEEL SHALL BE EPOXY COATED IN ACCORDANCE WITH THE STANDARD SPECIFICATIONS.



PROJECT NO. B-4414
BEAUFORT COUNTY
 STATION: 24+78.90 -L-

SHEET 1 OF 2



STATE OF NORTH CAROLINA
 DEPARTMENT OF TRANSPORTATION
 RALEIGH

SUBSTRUCTURE
 BENT 2

DRAWN BY : ZCS DATE : 11/19
 CHECKED BY : MGC DATE : 11/19
 DESIGN ENGINEER OF RECORD: TBE DATE : 03/20

DOCUMENT NOT CONSIDERED FINAL UNLESS ALL SIGNATURES COMPLETED					
TGS ENGINEERS 706 HILLSBOROUGH STREET SUITE 200 RALEIGH, NC 27603 PH (919) 773-8887 CORP. LICENSE NO.: C-0275					
REVISIONS					
NO.	BY:	DATE:	NO.	BY:	DATE:
1			3		
2			4		
SHEET NO.					S-25
TOTAL SHEETS					33