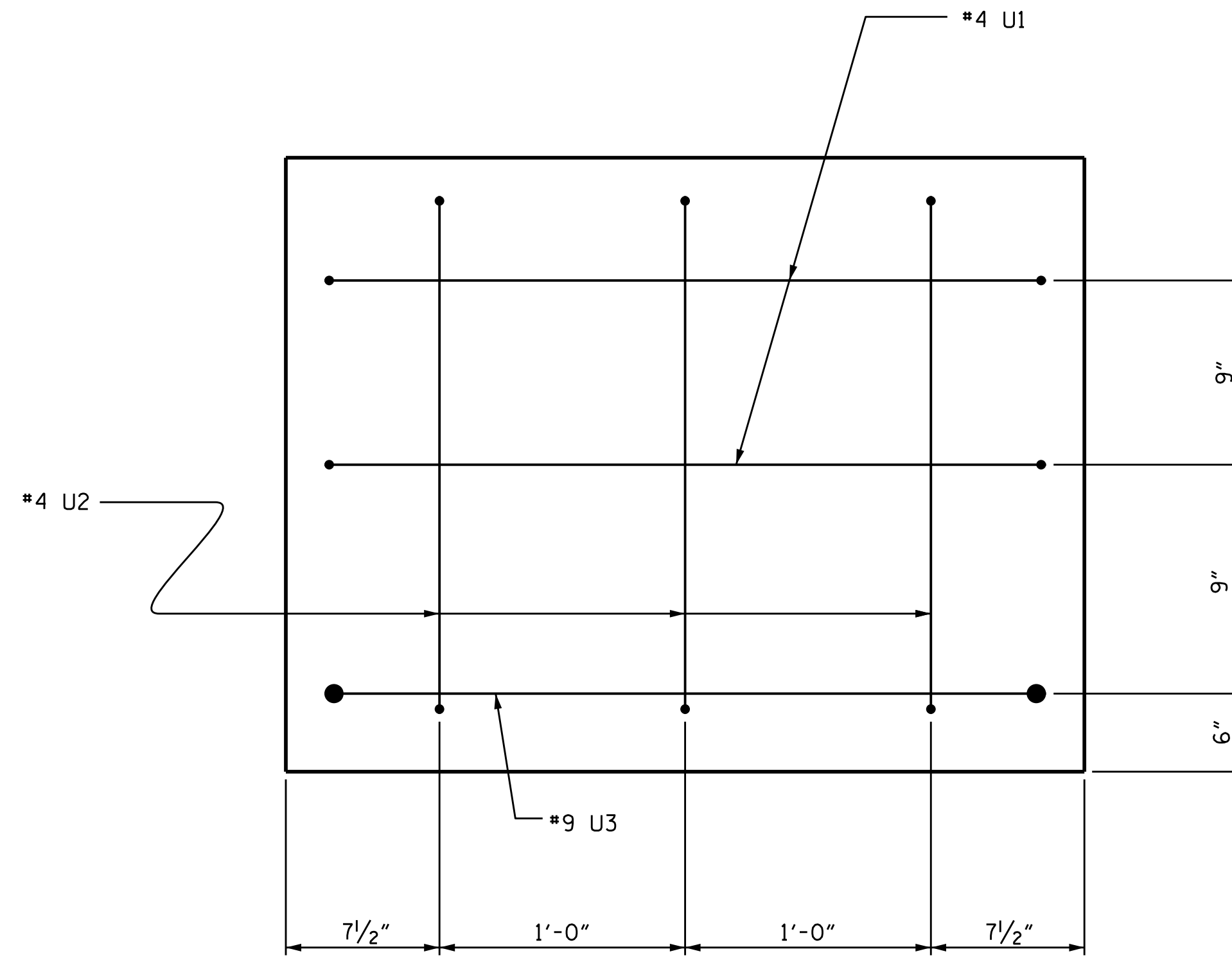
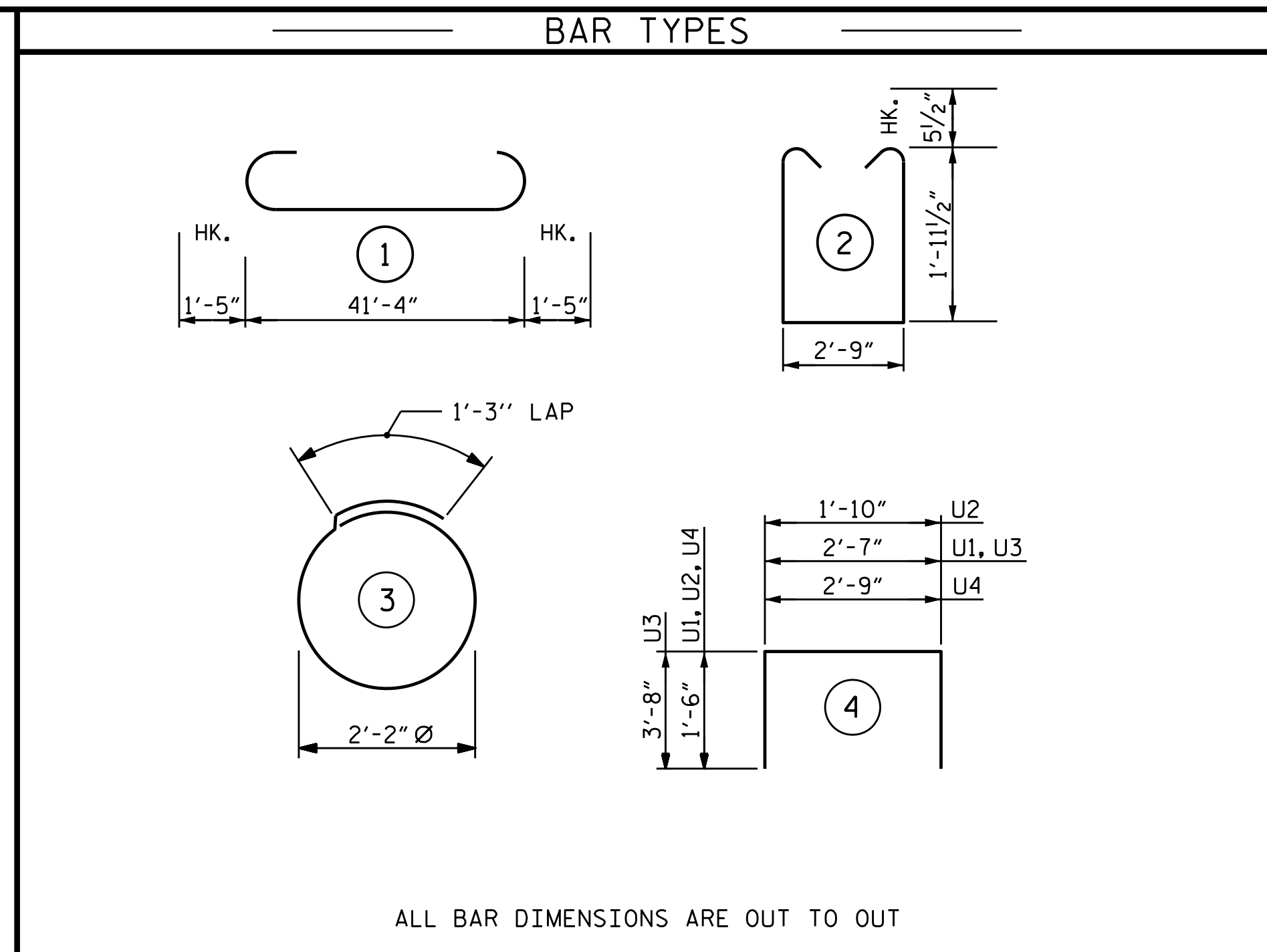


**SECTION A-A**



**END OF CAP VIEW**  
(TYPICAL BOTH ENDS)



ALL BAR DIMENSIONS ARE OUT TO OUT

BILL OF MATERIAL FOR BENT No. 1					
BAR	NO.	SIZE	TYPE	LENGTH	WEIGHT
*B1	4	#10	1	44'-2"	760
*B2	4	#10	STR	41'-6"	714
*B3	4	#5	STR	41'-6"	173
*B4	8	#4	STR	22'-0"	118
*B5	11	#4	STR	2'-9"	20
*B6	4	#4	STR	3'-0"	8
*S1	58	#5	2	7'-7"	459
*S2	14	#4	3	8'-2"	76
*U1	4	#4	4	5'-7"	15
*U2	6	#4	4	4'-10"	19
*U3	2	#9	4	9'-11"	67
*U4	30	#4	4	5'-9"	115

\*EPOXY COATED REINFORCING STEEL 2544 LBS.

\* CLASS AA CONCRETE  
TOTAL CLASS AA CONCRETE 12.8 C.Y.

16" PRESTRESSED CONCRETE PILES NO. 7 280 LIN. FT.  
PILE REDRIVES 4 EA.

PILE DRIVING EQUIPMENT SETUP FOR 16" PRESTRESSED CONCRETE PILES 7 EA.

\* CONCRETE DISPLACED BY THE 16" PRESTRESSED CONCRETE PILES HAS BEEN DEDUCTED FROM THE CONCRETE QUANTITY.

PROJECT NO. B-4414  
BEAUFORT COUNTY  
STATION: 24+78.90 -L-

SHEET 2 OF 2

STATE OF NORTH CAROLINA  
DEPARTMENT OF TRANSPORTATION  
RALEIGH

**SEAL**  
20125  
MARSHALL G. CHECK, JR.  
ENGINEER  
2/8/2021

DOCUMENT NOT CONSIDERED FINAL UNLESS ALL SIGNATURES COMPLETED

TGS ENGINEERS  
706 HILLSBOROUGH STREET SUITE 200  
RALEIGH, NC 27603  
PH (919) 773-8887  
CORP. LICENSE NO.: C-0275

REVISIONS						SHEET NO.
NO.	BY:	DATE:	NO.	BY:	DATE:	S-24
1			3			TOTAL SHEETS
2			4			33

DRAWN BY : ZCS DATE : 11/19  
CHECKED BY : MGC DATE : 11/19  
DESIGN ENGINEER OF RECORD: TBE DATE : 03/20