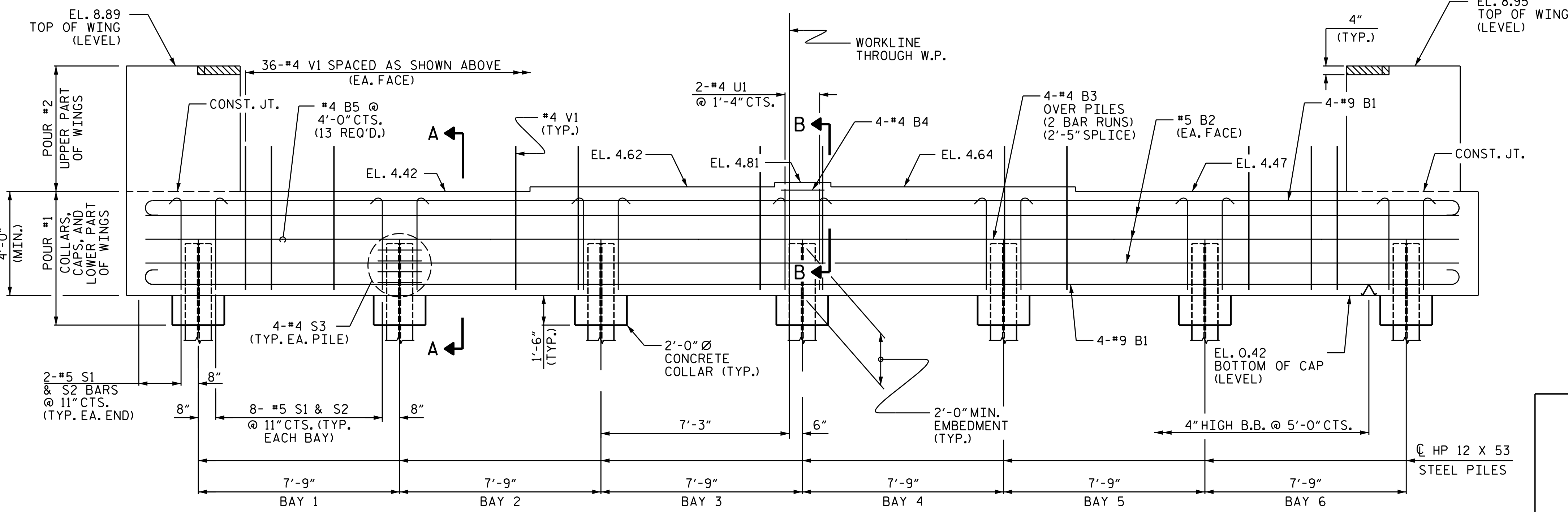


PLAN

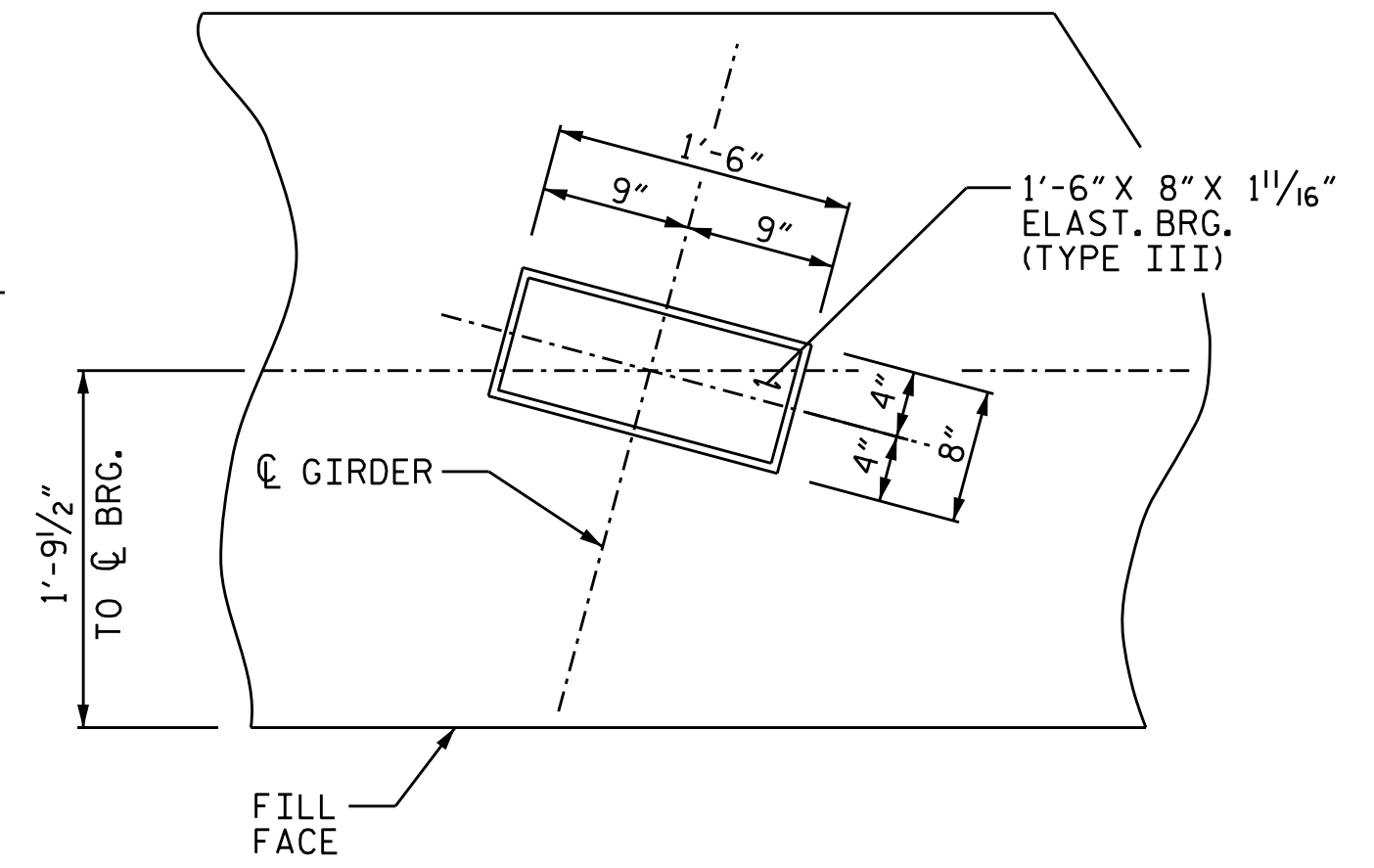


ELEVATION

WINGS NOT SHOWN FOR CLARITY

NOTES

- APPLY AN 8 MIL THICK 1350 ALUMINUM (W-AL-1350) THERMAL SPRAY COATING WITH A 0.5 MIL THICK SEAL COAT TO THE PILES, IN ACCORDANCE WITH THE THERMAL SPRAYED COATINGS SPECIAL PROVISION AND SECTION 442 OF THE STANDARD SPECIFICATIONS. FOR THERMAL SPRAYED COATINGS, SEE SPECIAL PROVISIONS.
- AFTER DRIVING THE PILES, APPLY 1 COAT EACH OF 1080-12 BROWN AND 1080-12 GRAY PAINT TO THE EMBEDDED SECTION OF THE METALLIZED PILE PRIOR TO CONCRETE EMBEDMENT IN ACCORDANCE WITH SECTION 442 OF THE STANDARD SPECIFICATIONS.
- ALL REINFORCING STEEL SHALL BE EPOXY COATED.
- CLASS AA CONCRETE SHALL BE USED IN THE END BENTS AND SHALL CONTAIN CALCIUM NITRATE CORROSION INHIBITOR.
- THE CONCRETE IN THE SHADED AREA OF THE WING SHALL BE POURED AFTER THE BARRIER RAIL IS CAST IF SLIP FORMING IS USED.



DETAIL "A"

(TYP. EA. GIRDER)

PROJECT NO. B-4414
BEAUFORT COUNTY
 STATION: 24+78.90 -L-

SHEET 1 OF 3

STATE OF NORTH CAROLINA
 DEPARTMENT OF TRANSPORTATION
 RALEIGH

PROFESSIONAL ENGINEER
 MARSHALL G. CHECK, JR.
 2/8/2021

DOCUMENT NOT CONSIDERED FINAL
 UNLESS ALL SIGNATURES COMPLETED

TGS ENGINEERS
 706 HILLSBOROUGH STREET
 SUITE 200
 RALEIGH, NC 27603
 PH (919) 773-8887
 CORP. LICENSE NO.: C-0275

REVISIONS						SHEET NO.
NO.	BY:	DATE:	NO.	BY:	DATE:	S-20
1			3			TOTAL SHEETS
2			4			33

DRAWN BY : STM DATE : 09/19
 CHECKED BY : MGC DATE : 12/19
 DESIGN ENGINEER OF RECORD: TBE DATE : 03/20