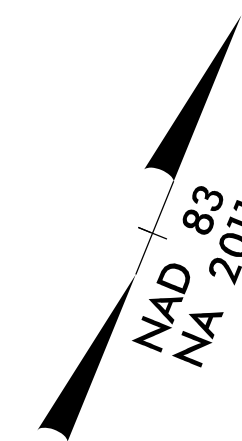


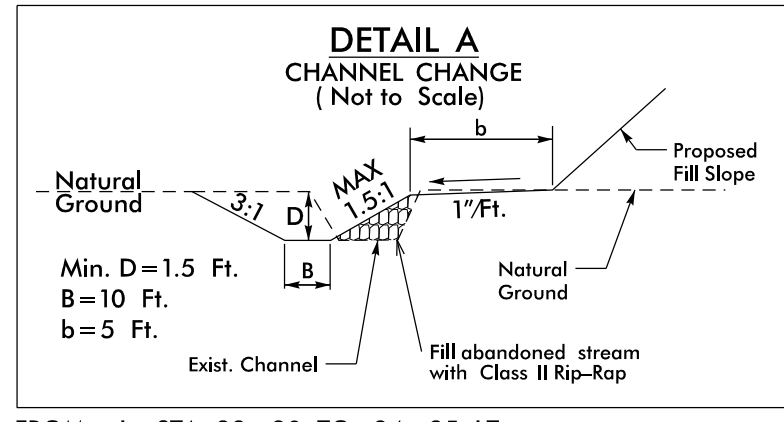
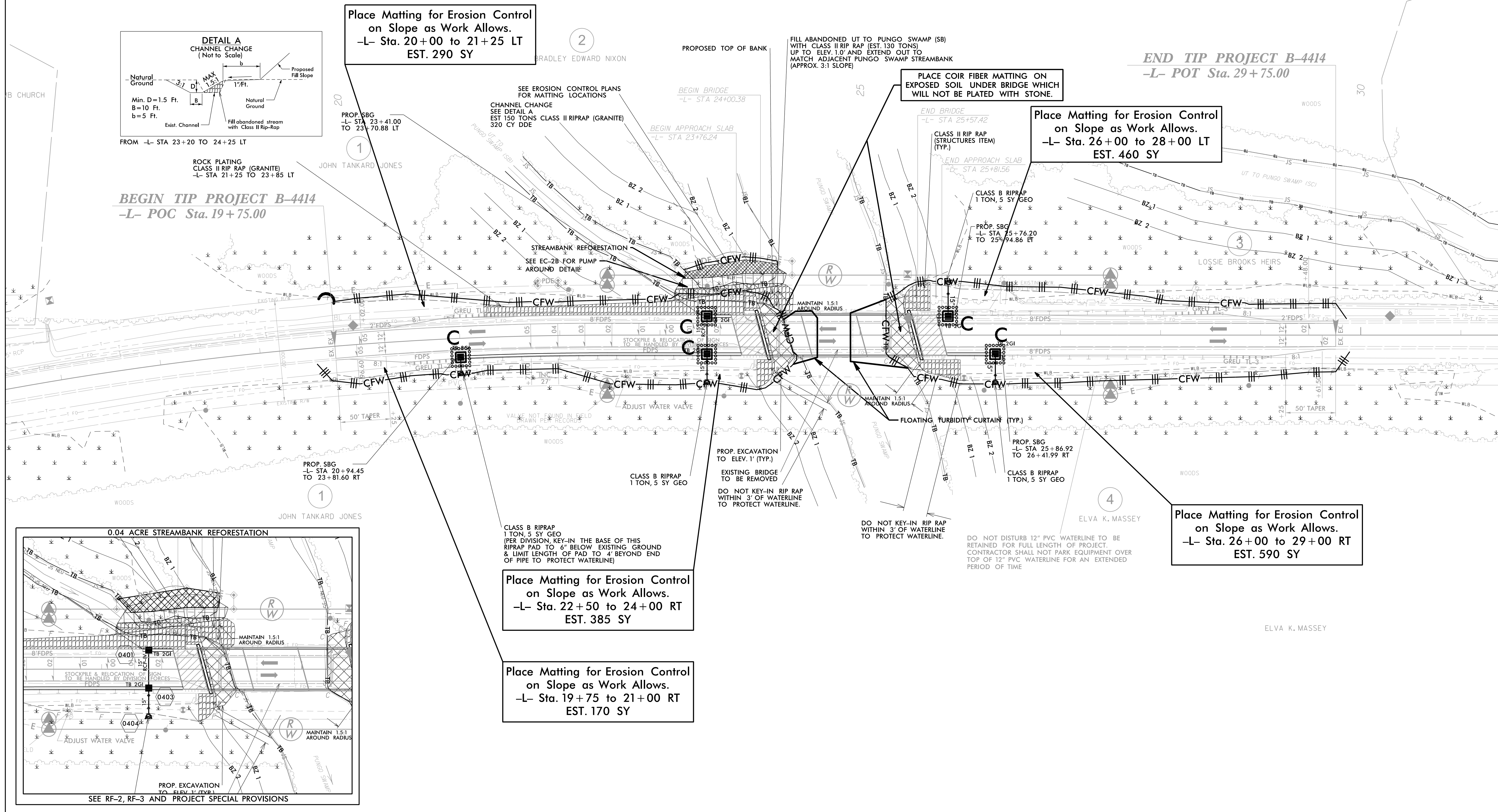
NOTE:
UTILIZE SPECIAL STILLING BASIN(S) AS
STILLING BASIN WHERE APPLICABLE.

Place Matting for Erosion Control
on Slopes Adjacent to Permitted
Wetlands as Work Allows.

Beaufort County
Bridge #600043



PROJECT REFERENCE NO. B-4414	SHEET NO. EC-5/CONST.4
RW SHEET NO.	
ROADWAY DESIGN ENGINEER	HYDRAULICS ENGINEER
TGS ENGINEERS 804-C N. LAFAYETTE ST SHELBY, NC 28150 PH (704) 476-0003 CORP. LICENSE NO.: C-0275	



ROCK PLATING
CLASS II RIP RAP (GRANITE)
-L- STA 21+25 TO 23+85 LT

BEGIN TIP PROJECT B-4414
-L- POC Sta. 19+75.00

Place Matting for Erosion Control
on Slope as Work Allows.
-L- Sta. 20+00 to 21+25 LT
EST. 290 SY

Place Matting for Erosion Control
on Slope as Work Allows.
-L- Sta. 26+00 to 28+00 LT
EST. 460 SY

Place Matting for Erosion Control
on Slope as Work Allows.
-L- Sta. 26+00 to 29+00 RT
EST. 590 SY

Place Matting for Erosion Control
on Slope as Work Allows.
-L- Sta. 22+50 to 24+00 RT
EST. 385 SY

Place Matting for Erosion Control
on Slope as Work Allows.
-L- Sta. 19+75 to 21+00 RT
EST. 170 SY

