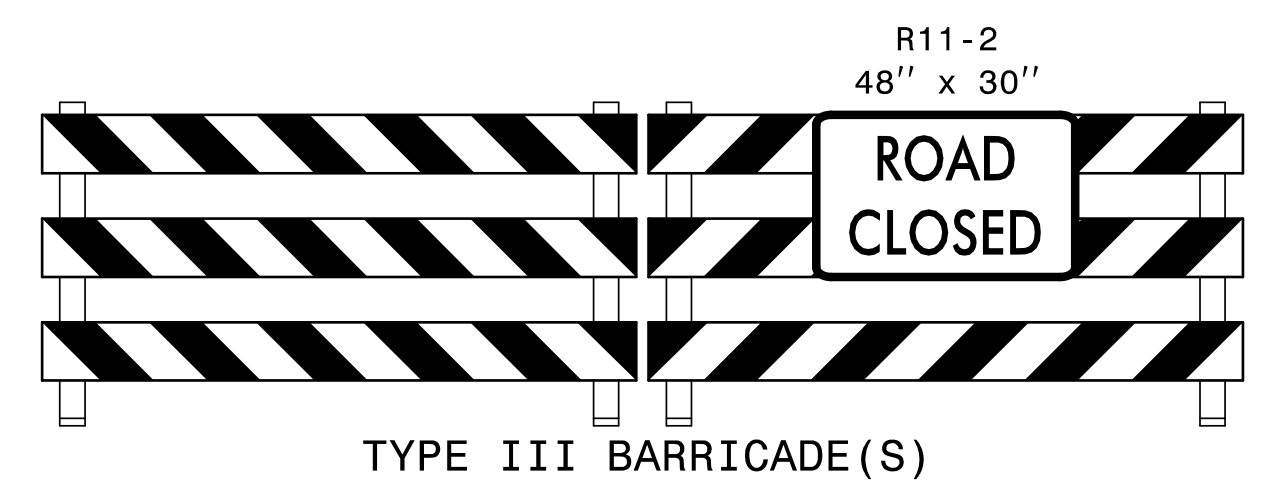
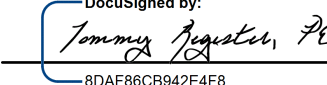
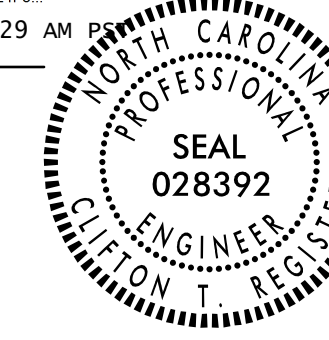


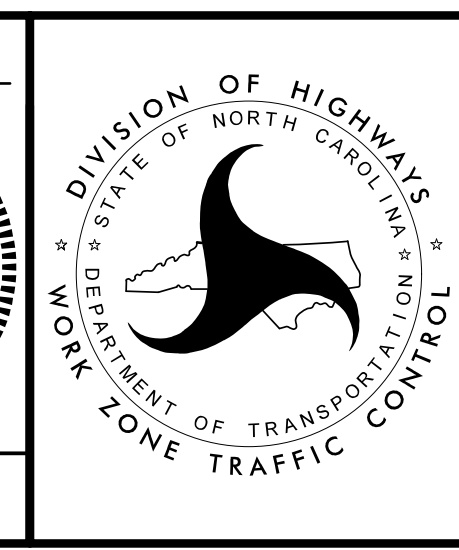
- PHASING NOTES**
- STEP 1: NCDOT DIVISION 2 WILL INSTALL CMS MESSAGE BOARD AND INSTALL ALL DETOUR ROUTE SIGNS AS SHOWN ON SHEET TMP-3.
 - STEP 2: NCDOT DIVISION 2 WILL INSTALL TYPE III BARRICADES AND SIGNS, AND CLOSE US 264 TO TRAFFIC AS SHOWN IN ROADWAY STANDARD DRAWING 1101.03 (SHEET 1 OF 9) AND TMP-2 AND TMP-3.
NCDOT DIVISION 2 WILL PLACE TRAFFIC ON DETOUR.
 - STEP 3: DEMOLISH AND REMOVE THE EXISTING BRIDGE OVER PUNGO SWAMP.
CONSTRUCT THE NEW BRIDGE OVER PUNGO SWAMP FROM -L- STA. 24+00.38 TO 25+57.42.
CONSTRUCT THE ROADWAY ON US 264 FROM -L- STA. 19+75.00 TO -L- STA. 24+00.38 (BEGIN BRIDGE) AND FROM -L- STA. 25+57.42 (END BRIDGE) TO 29+75.00 UP TO AND INCLUDING THE FINAL LAYER OF SURFACE COURSE.
 - STEP 4: REFERRING TO SHEET PMP-2, PLACE PERMANENT PAVEMENT MARKINGS ON THE FOLLOWING: US 264 FROM STA. 19+75.00 TO STA. 29+75.00.
 - STEP 5: NCDOT DIVISION 2 WILL REMOVE BARRICADES, SIGNS, AND ALL OTHER WORK ZONE TRAFFIC CONTROL DEVICES AND OPEN US 264 TO TRAFFIC IN FINAL PATTERN.

THE HISTORIC HIGH WATER MARK COULD NOT BE DETERMINED BY PHYSICAL OR PAROLE EVIDENCE



1/1/2021
V:\ncdot\11-4414\traffic\control\11-4414_TC_TMP_02(PHASING).dgn
User: jbevans

APPROVED: 
DATE: 1/26/2021 | 9:29 AM
SEAL




OVERVIEW AND PHASING

DOCUMENT NOT CONSIDERED FINAL UNLESS ALL SIGNATURES COMPLETED