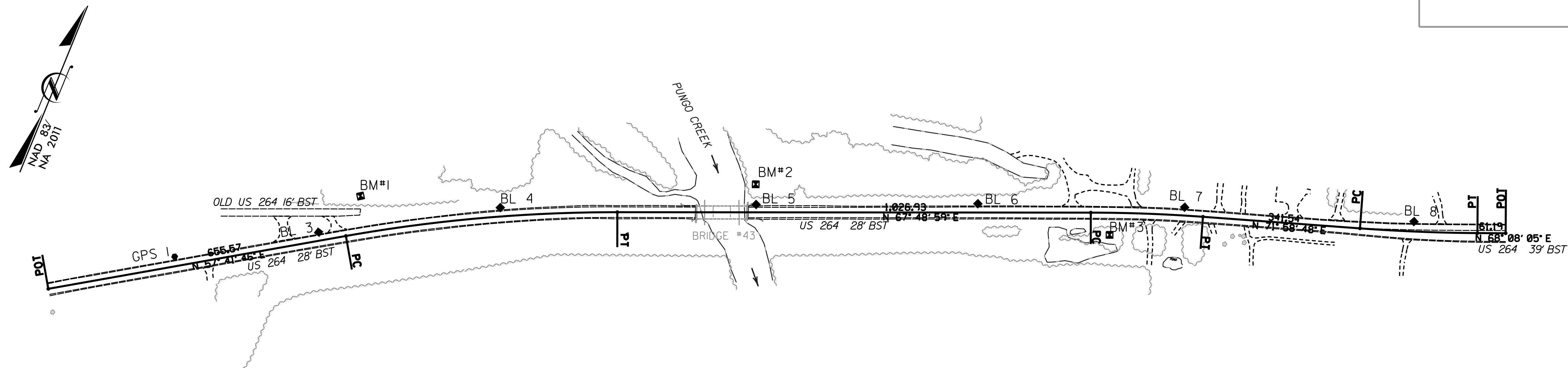


SURVEY CONTROL SHEET

W/ EXISTING CENTERLINE ALIGNMENTS PRIOR TO CONSTRUCTION

PROJECT REFERENCE NO.	SHEET NO.
B-4414	RW02C-1
Location and Surveys	
DIVISION 2 LOCATION & SURVEYS	



EXISTING ALIGNMENTS

POINT	N	E	BEARING	DIST	DELTA	D	L	T	R
POT	655425.439	267302.100							
LINE			N 57° 41' 45.7" E	655.57					
PC	655775.705	2673656.200	N 62° 45' 22.1" E	590.95	10° 07' 12.8" (R)	01° 42' 37.2"	591.72	296.63	3350.00
CURVE									
PI	656046.308	2674181.599	N 67° 40' 58.5" E	1026.93					
LINE			N 67° 40' 58.5" E	1026.93					
PC	656434.054	2675132.513	N 69° 53' 53.1" E	243.39	04° 09' 49.1" (R)	01° 42' 37.2"	243.44	121.77	3350.00
CURVE									
PI	656517.705	2675361.074	N 71° 58' 47.6" E	341.54					
LINE			N 71° 58' 47.6" E	341.54					
PC	656623.359	2675685.057	N 70° 03' 26.2" E	254.98	03° 50' 42.8" (L)	01° 30' 28.0"	255.02	127.56	3800.00
CURVE									
PI	656710.326	2675925.544	N 68° 08' 04.8" E	51.19					
LINE			N 68° 08' 04.8" E	51.19					
POT	656733.115	2675982.332							

BASELINE

BL	POINT	DESC.	NORTH	EAST	ELEVATION
2	B4414-GPS2		654984.0960	2672354.0710	11.13
1	B4414-GP51		655993.7490	2673329.3870	6.50
3	B4414-BL3		655760.0673	2673590.2064	5.50
4	B4414-BL4		655989.4139	2673942.0750	5.33
5	B4414-BL5		656175.6526	2674453.8340	6.68
6	B4414-BL6		656359.1778	2674898.4281	4.48
7	B4414-BL7		656521.0491	2675316.5104	6.32
8	B4414-BL8		656681.3023	2675788.7013	6.63

BENCHMARKS

BM1	ELEVATION = 6.45	BM2	ELEVATION = 3.37	BM3	ELEVATION = 5.78
N 655868	E 2673653	N 656216	E 2674437	N 656405	E 2675188
BM#1 RR SPIKE IN BASE OF 18' POPLAR		BM#2 RR SPIKE IN BASE OF 16' PINE		BM#3 RR SPIKE IN BASE OF 16' SWEET GUM	

NOTES:

- PROJECT CONTROL WAS ESTABLISHED USING GNSS, THE GLOBAL NAVIGATION SATELLITE SYSTEM.
- THE SURVEY CONTROL DATA FOR THIS PROJECT HAS BEEN COMPILED FROM VARIOUS SOURCES. IF FURTHER INFORMATION REGARDING PROJECT CONTROL IS NEEDED, PLEASE CONTACT THE LOCATION AND SURVEYS UNIT.

REVISIONS

SCHEMATIC CONTROL SHEET