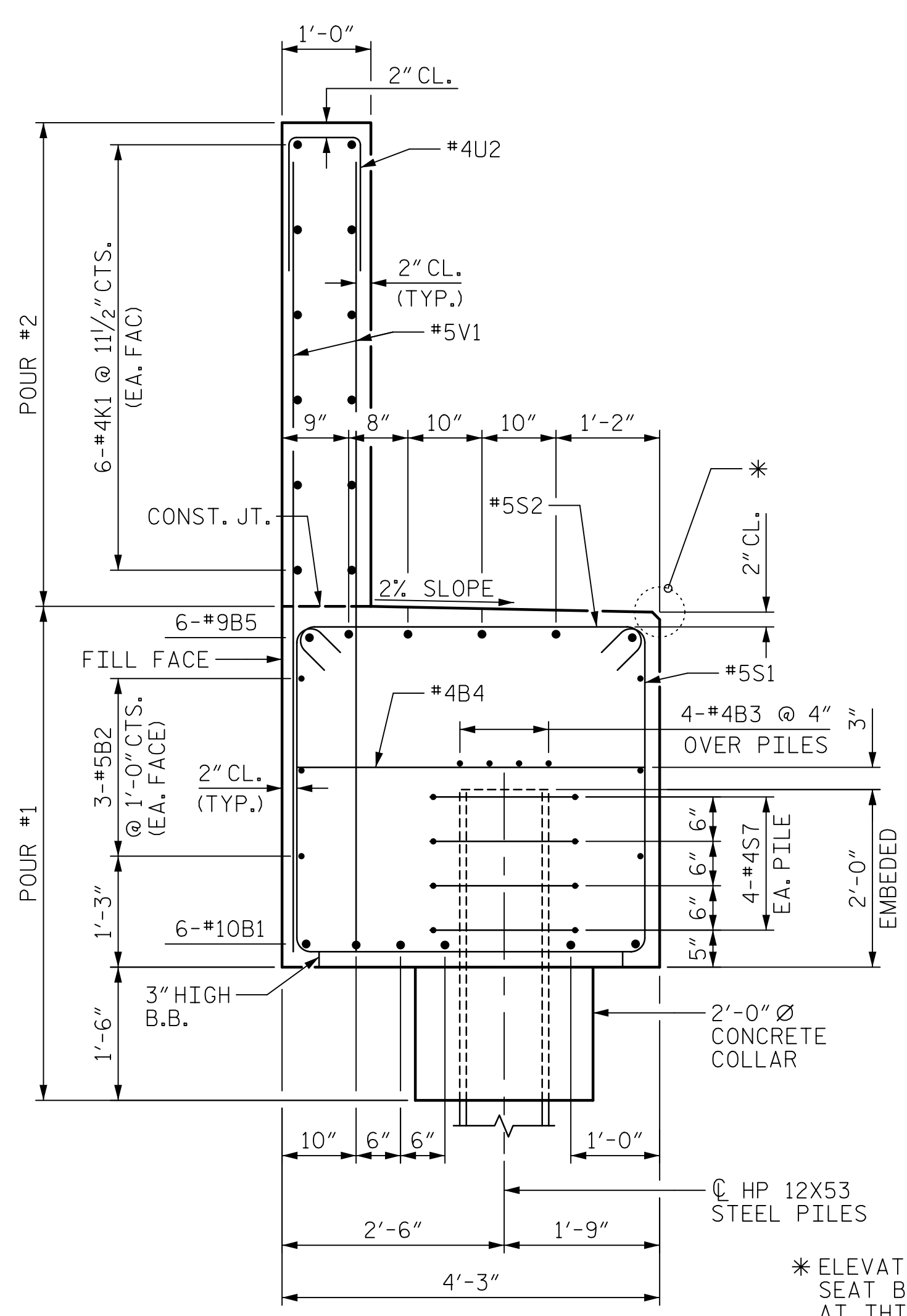
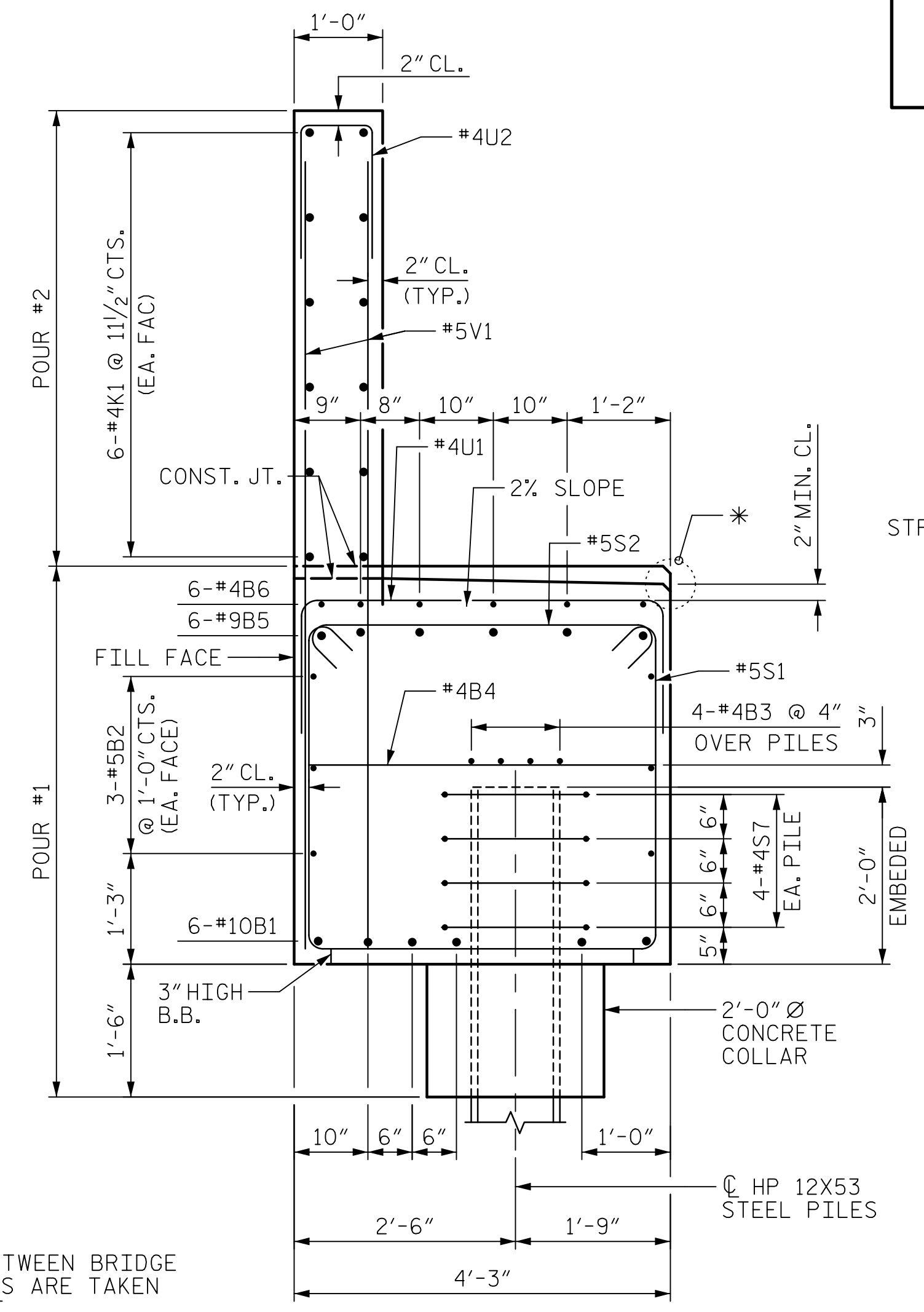


DATE: 5/27/2020  
TIME: 12:51:51 PM

USER: nusrat\p001\Drawings\Projects\60571086 - BR-0042\800\_CAD\_6151910\_CAD\VO\_MCDOT\_TIP\Structures\04 Drawings\800\_39\_S20\_BR-0042\_SMU\_EB\_1.dgn



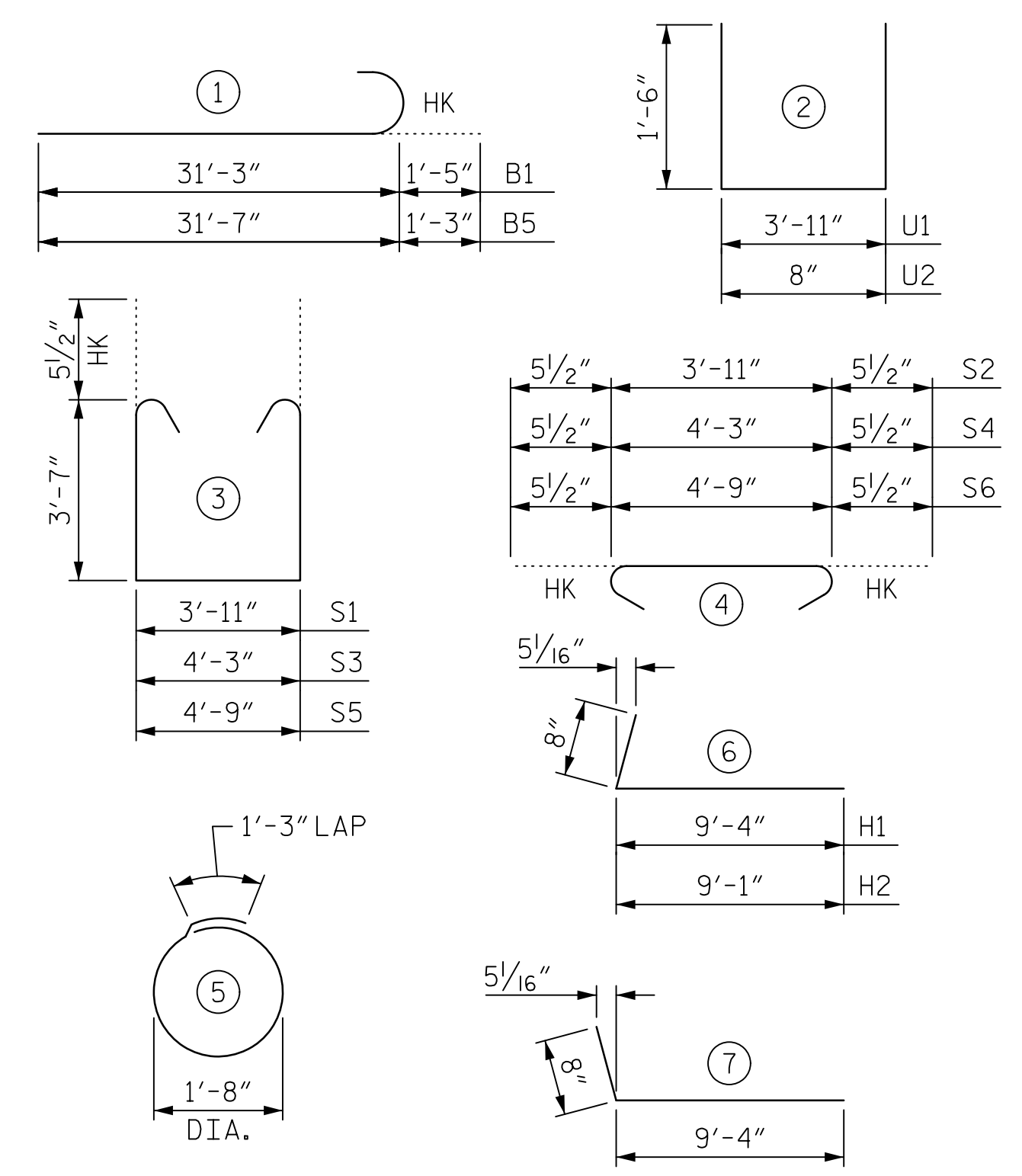
SECTION A-A



SECTION B-B

\* ELEVATIONS BETWEEN BRIDGE SEAT BUILD-UPS ARE TAKEN AT THIS POINT

BAR TYPE



ALL BAR DIMENSIONS ARE OUT TO OUT.

BILL OF MATERIAL

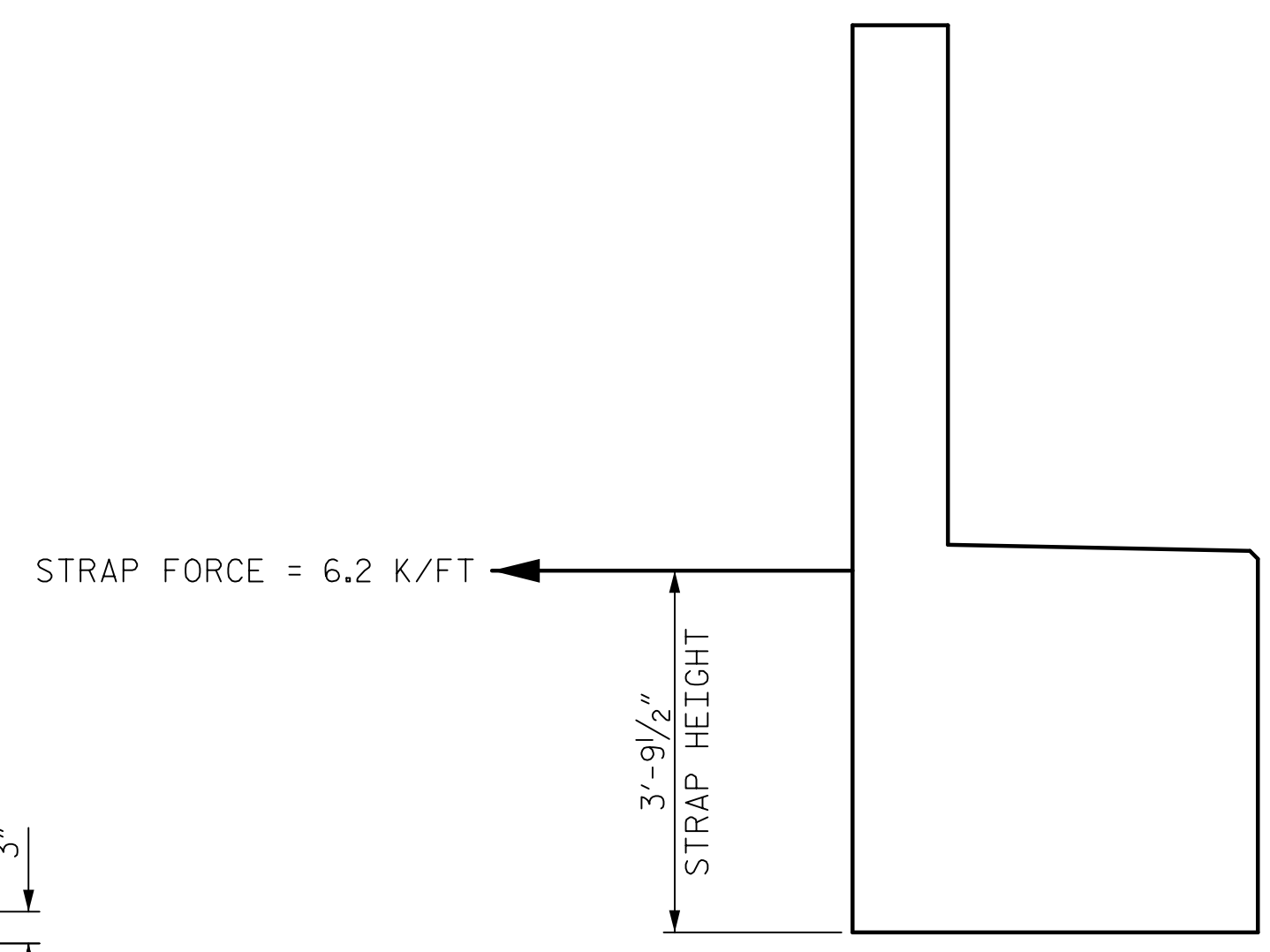
END BENT 1

BAR	No.	SIZE	TYPE	LENGTH	WEIGHT
B1	12	10	1	32'-8"	1687
B2	6	5	STR	58'-0"	363
B3	8	4	STR	30'-3"	162
B4	15	4	STR	3'-8"	37
B5	12	9	1	32'-10"	1340
B6	6	4	STR	30'-0"	120
H1	13	4	6	10'-0"	87
H2	26	4	7	10'-0"	174
H3	13	4	6	9'-9"	85
K1	24	4	STR	30'-3"	485
K2	8	4	STR	4'-4"	23
S1	64	5	3	12'-0"	801
S2	64	5	4	4'-10"	323
S3	2	5	3	12'-4"	26
S4	2	5	4	5'-2"	11
S5	2	5	3	12'-10"	27
S6	2	5	4	5'-8"	12
S7	36	4	5	6'-6"	156
U1	38	4	2	6'-11"	176
U2	48	5	2	3'-8"	184
V1	48	5	STR	8'-9"	438
V2	30	5	STR	10'-6"	329
V3	30	5	STR	10'-9"	336

TOTAL REINFORCING STEEL 7,382 LBS.

CLASS A CONCRETE

POUR #1 (CAP, COLLARS & LOWER WINGWALLS)	41.4 C.Y.
POUR #2 (UPPER BACKWALL & WINGWALL)	16.5 C.Y.
<b>TOTAL</b>	<b>57.9 C.Y.</b>
HP 12x53 STEEL PILES:	
NO. = 9	630 LIN. FT.
PILE DRIVING EQUIPMENT SETUP	
NO. = 9	



STRAP FORCE

PROJECT NO. BR-0042  
ROCKINGHAM COUNTY  
STATION: 19+56.99 -L-

SHEET 3 OF 3

**AECOM**  
AECOM TECHNICAL SERVICES OF NC, INC.  
701 CORPORATE CENTER DRIVE, SUITE 475  
RALEIGH, NC 27607  
(919) 854-6200 www.aecom.com  
AECOM License No. F-0342

Designed by:  
*John C. Morrison*  
NORTH CAROLINA PROFESSIONAL ENGINEER  
SEAL 030474  
JOHN C. MORRISON  
5/27/2020

STATE OF NORTH CAROLINA  
DEPARTMENT OF TRANSPORTATION  
RALEIGH  
SUPERSTRUCTURE  
END BENT 1

REVISIONS						SHEET NO.
NO.	BY:	DATE:	NO.	BY:	DATE:	S-20
1			3			TOTAL SHEETS
2			4			28

DOCUMENT NOT CONSIDERED FINAL UNLESS ALL SIGNATURES COMPLETED

DRAWN BY : T.B. STUMP	DATE : 07/2019
CHECKED BY : D. RITACCO	DATE : 07/2019
DESIGNED BY : D. RITACCO	DATE : 07/2019
DESIGN CHECKED BY : J.C. MORRISON	DATE : 07/2019