
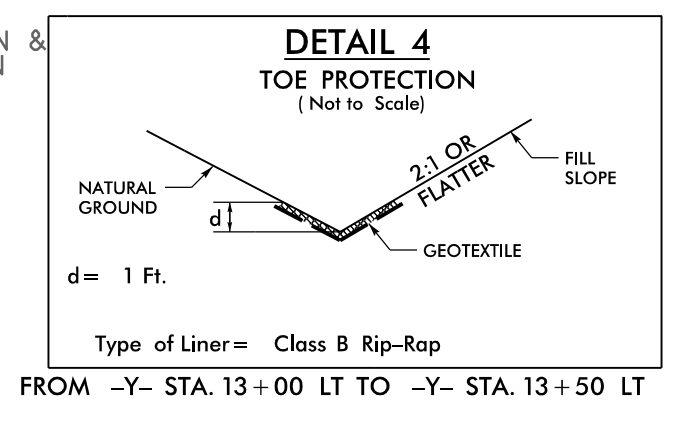
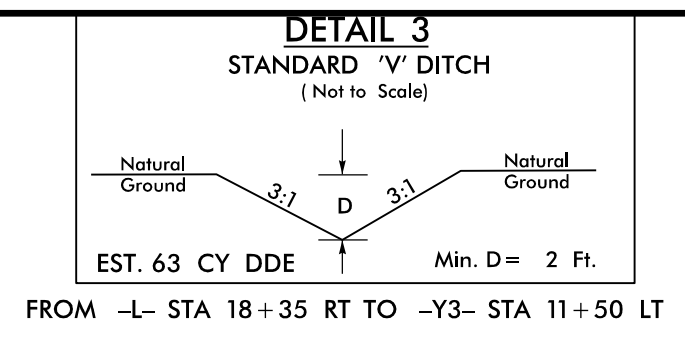
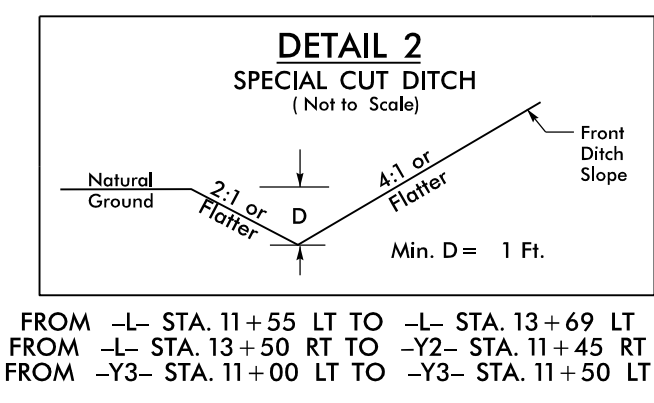
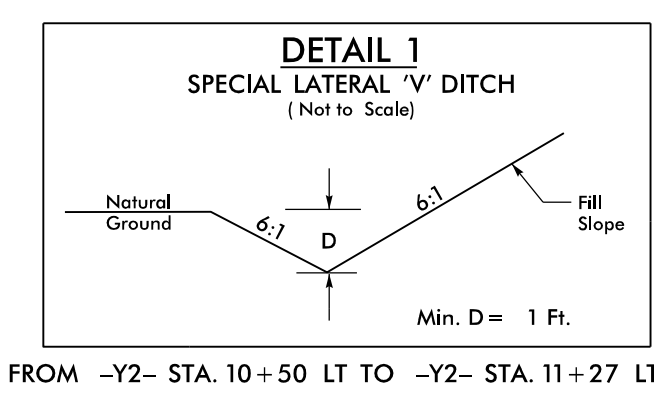
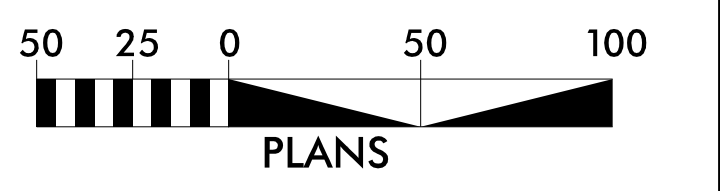


5/14/99

PROJECT REFERENCE NO.	SHEET NO.
BR-0042	EC-06/CONST.4
RW SHEET NO.	
Prepared in the Office of:	
 AECOM <small>NC FIRM LICENSE No. F-0342 701 Corporate Center Drive, Suite 475 Raleigh, NC 27607 (919) 854-6200 • (919) 854-6259 (FAX)</small>	



Utilize Fabric Insert Inlet Protection Devices in lieu of Rock Inlet Sediment Traps, Type-C as Directed to avoid impoundment of runoff in Roadway open to Traffic

Place Matting for Erosion Control on Slope as Work Allows.
-L- Sta. 16+00 to Sta. 18+00 LT
-L- Sta. 17+50 to Sta. 18+50 RT

BEGIN CONSTRUCTION
-L- POC STA. 9+48.00

BEGIN CONSTRUCTION
-Y1- POT STA. 11+70.00

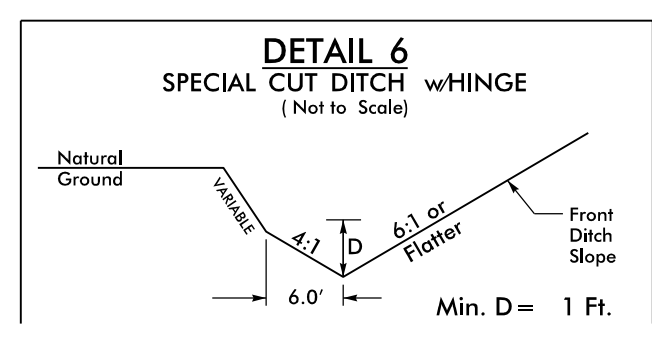
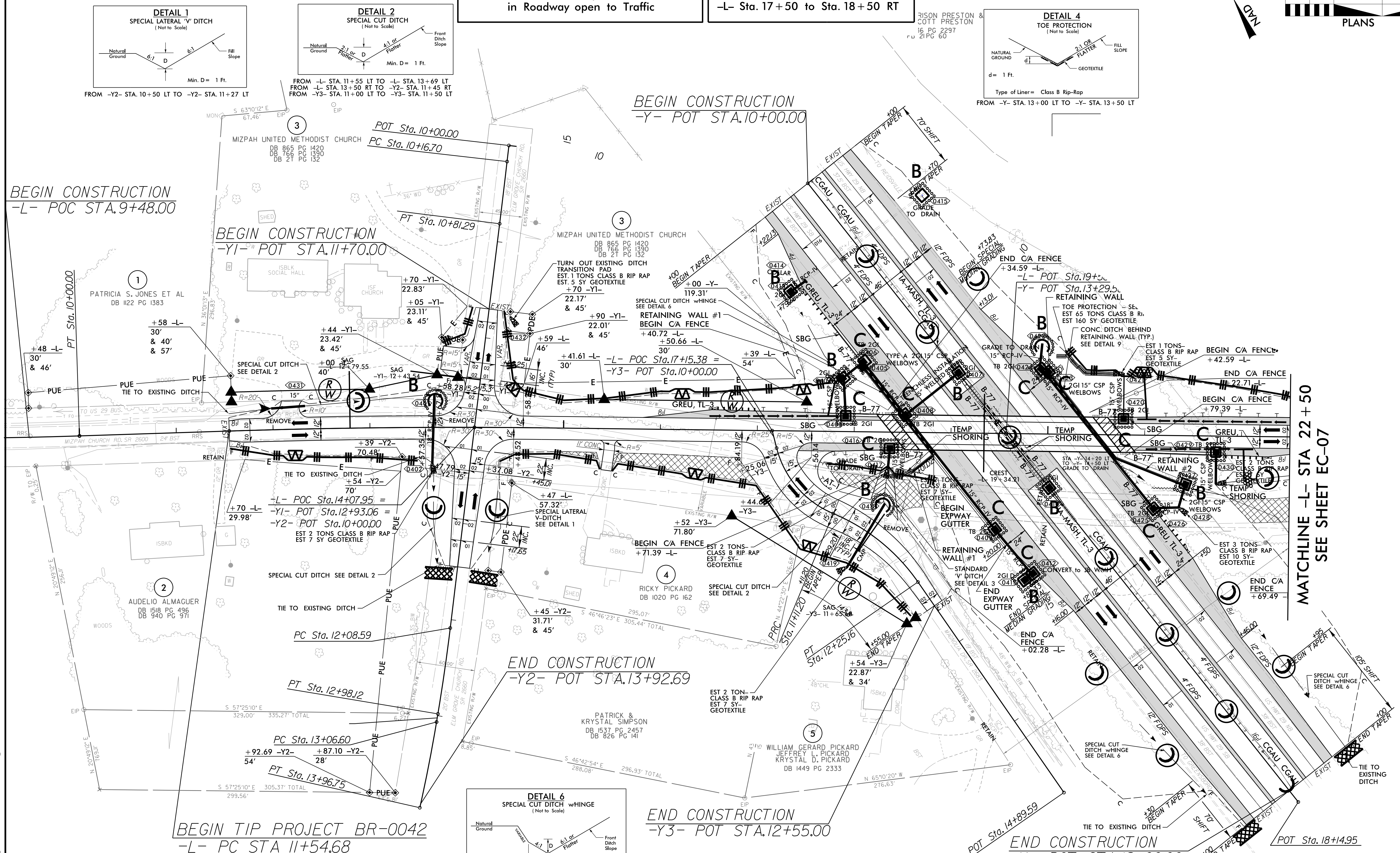
BEGIN CONSTRUCTION
-Y- POT STA. 10+00.00


END CONSTRUCTION
-Y2- POT STA. 13+92.69

END CONSTRUCTION
-Y3- POT STA. 12+55.00

BEGIN TIP PROJECT BR-0042
-L- PC STA 11+54.68

MATCHLINE -L- STA 22+50
SEE SHEET EC-07



 PAVEMENT REMOVAL
FOR BRIDGE / PAVEMENT RELATIONSHIP SKETCH SEE SHEET 2B-1

FOR -L- PROFILE SEE SHEET 6
FOR -Y LT- & -Y RT- PROFILE SEE SHEET 7
FOR -Y1-, -Y2-, -Y3-, & -Y4- PROFILES SEE SHEET 8

R:\Enviro\on\proj\BR0042_rou_EC-06.dgn