


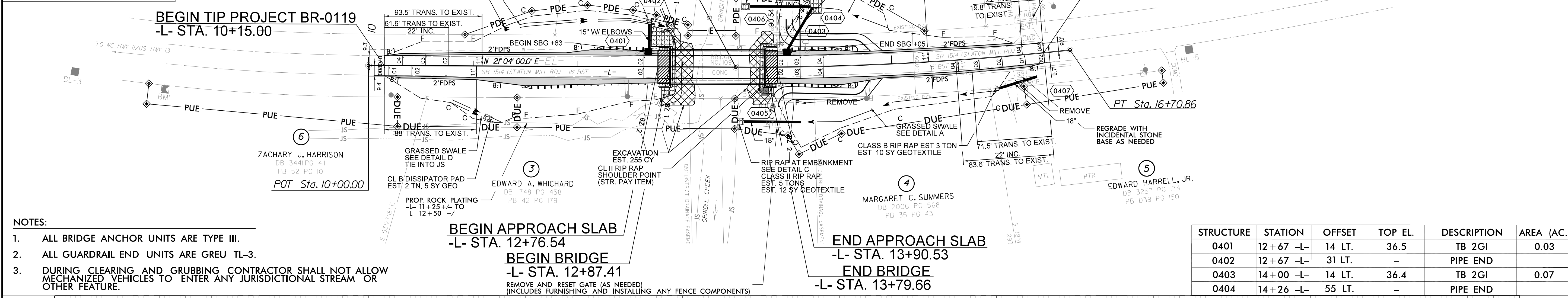
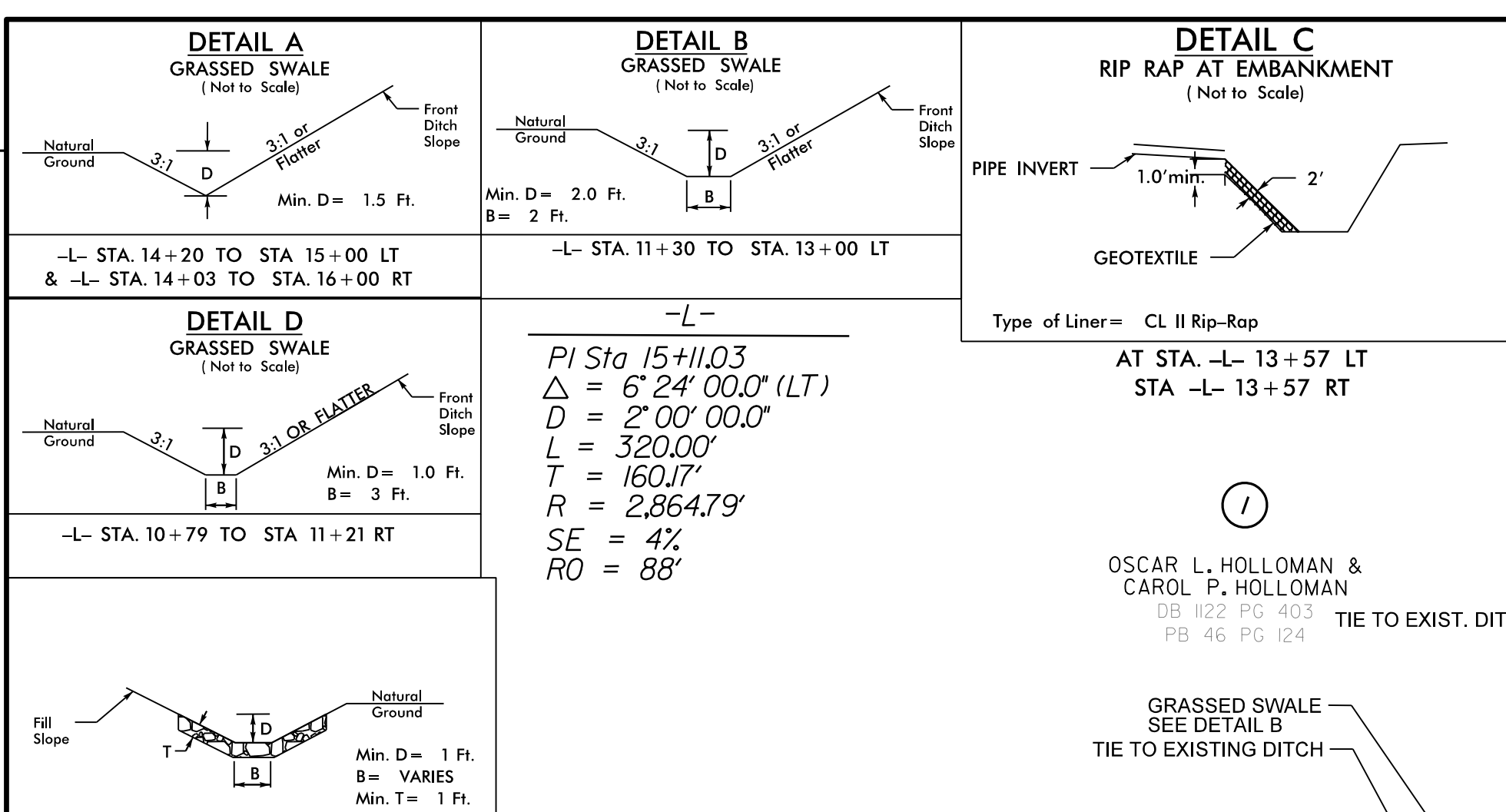
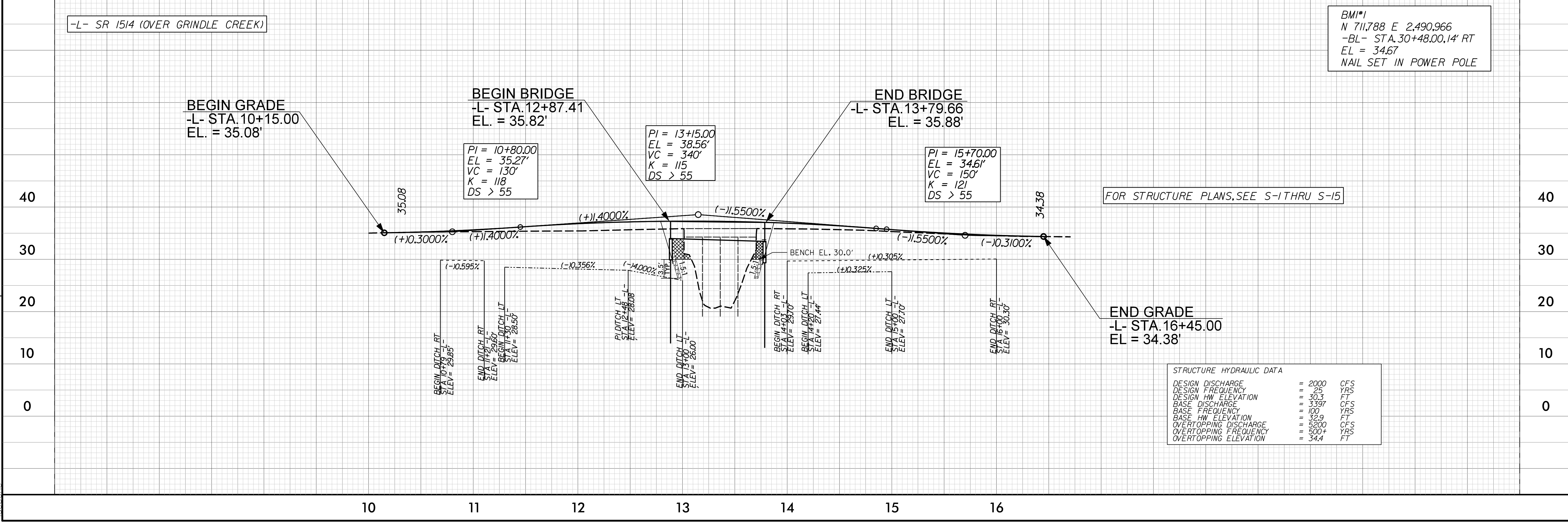


PROJECT REFERENCE NO. BR-0119	SHEET NO. 4
RW SHEET NO. ROADWAY DESIGN ENGINEER	HYDRAULICS ENGINEER
2/4/2021	2/4/2021
	
Doc. designed by <i>John Mayers</i>	Doc. designed by <i>Manuel L. Cullum</i>
DOCUMENT NOT CONSIDERED FINAL UNLESS ALL SIGNATURES COMPLETED	
PREPARED IN THE OFFICE OF:	



- NOTES:**
- ALL BRIDGE ANCHOR UNITS ARE TYPE III.
 - ALL GUARDRAIL END UNITS ARE GREU TL-3.
 - DURING CLEARING AND GRUBBING CONTRACTOR SHALL NOT ALLOW MECHANIZED VEHICLES TO ENTER ANY JURISDICTIONAL STREAM OR OTHER FEATURE.

STRUCTURE	STATION	OFFSET	TOP EL.	DESCRIPTION	AREA (AC.)
0401	12+67 -L-	14 LT.	36.5	TB 2GI	0.03
0402	12+67 -L-	31 LT.	-	PIPE END	
0403	14+00 -L-	14 LT.	36.4	TB 2GI	0.07
0404	14+26 -L-	55 LT.	-	PIPE END	



STRUCTURE HYDRAULIC DATA

DESIGN DISCHARGE	= 2000	CFS
DESIGN FREQUENCY	= 25	YRS
DESIGN HW ELEVATION	= 30.3	FT
BASE DISCHARGE	= 3397	CFS
BASE FREQ. ELEVATION	= 100	FT
BASE HW ELEVATION	= 32.9	FT
OVERTOPPING DISCHARGE	= 5200	CFS
OVERTOPPING FREQUENCY	= 500+	YRS
OVERTOPPING ELEVATION	= 34.4	FT

BMI#1
N 711,788 E 2,490,966
-BL- STA. 30+48.00, 14' RT
EL = 34.67
NAIL SET IN POWER POLE

REVISIONS

8/17/99

04-FEB-2021 10:36
BR-0119_Rdy_psh.dgn
ide.bone