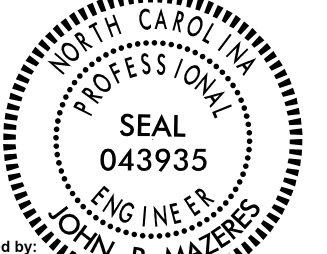


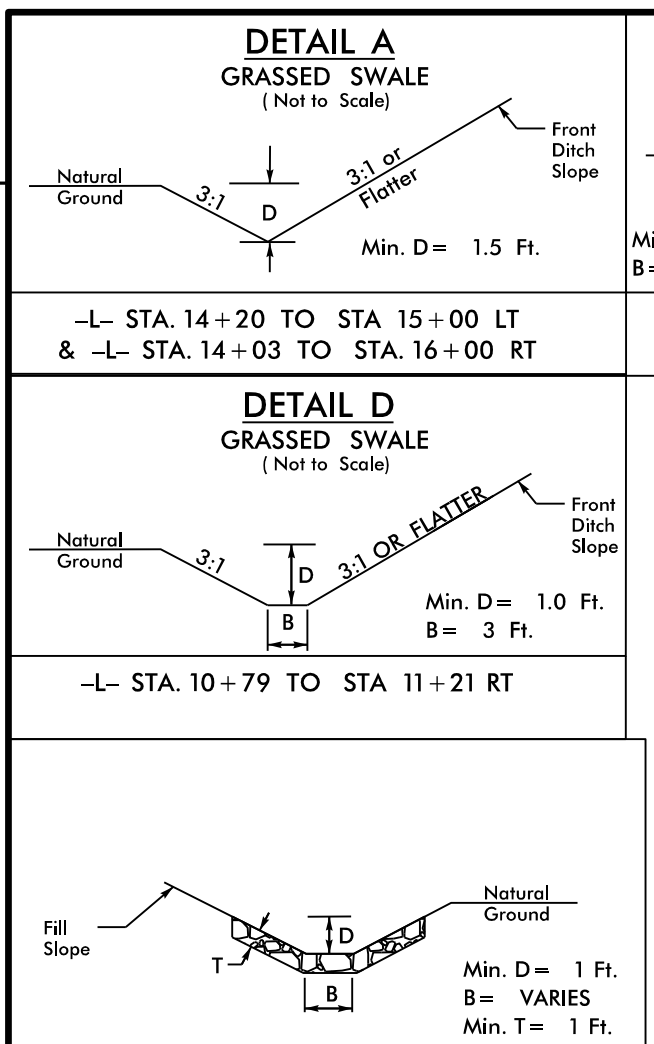
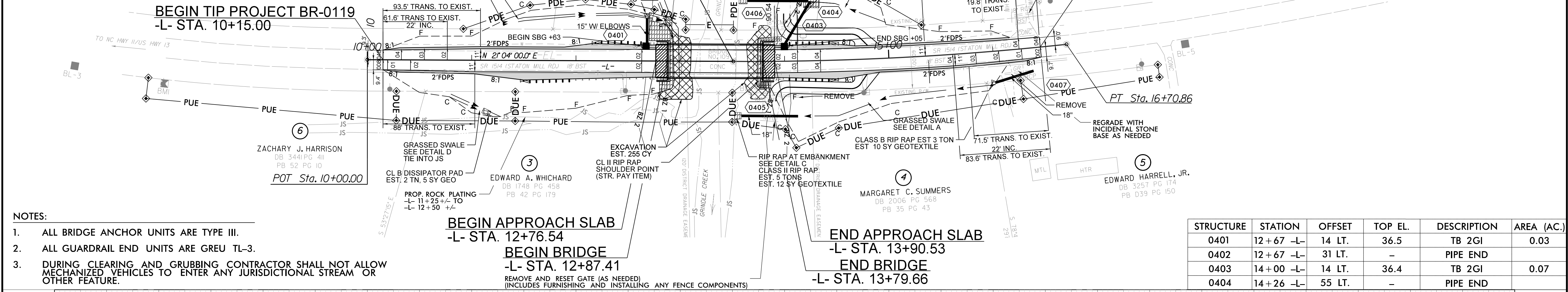


|   |   |
|---|---|
| PROJECT REFERENCE NO.<br><b>BR-0119</b>   | SHEET NO.<br><b>4</b>   |
| RW SHEET NO.  |   |
| ROADWAY DESIGN ENGINEER<br>2/16/2021  | HYDRAULICS ENGINEER<br>2/16/2021  |
|                                    |  |
| <p><b>DOCUMENT NOT CONSIDERED FINAL<br/>UNLESS ALL SIGNATURES COMPLETED</b></p>                                       |   |
| <p>PREPARED IN THE OFFICE OF:</p>  |   |

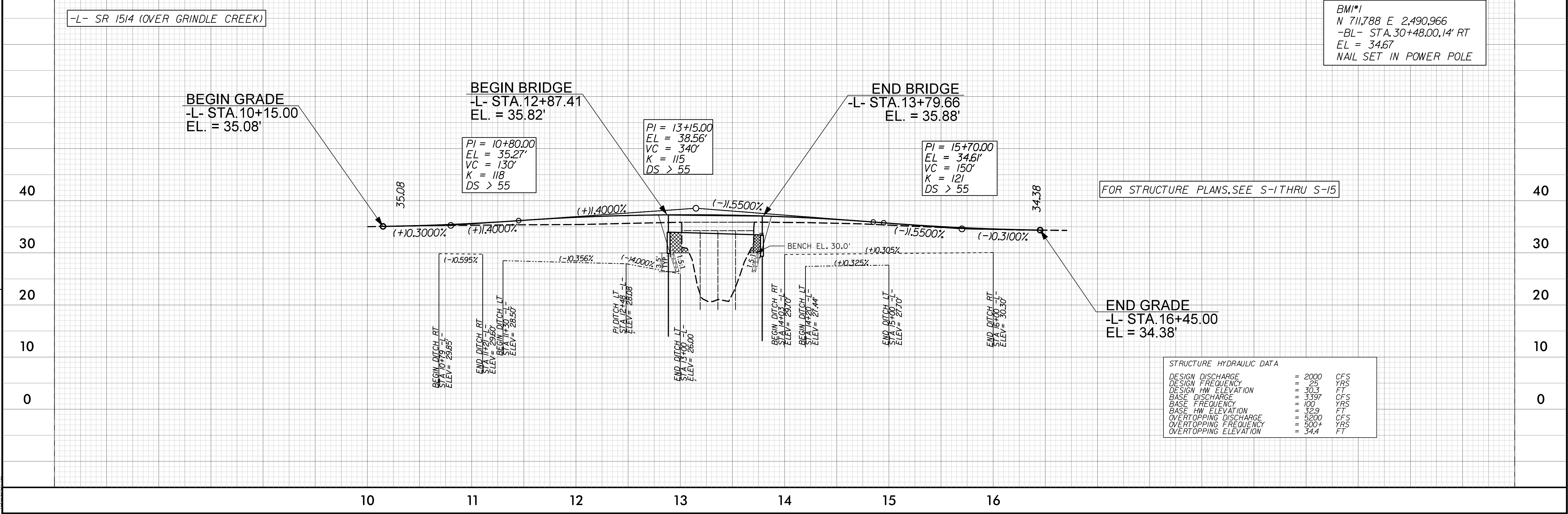


$PI\ Sta\ 15+11.03$   
 $\Delta = 6' 24'' 00.0'' (LT)$   
 $D = 2' 00'' 00.0''$   
 $L = 320.00'$   
 $T = 160.17'$   
 $R = 2,864.79'$   
 $SE = 4\%$   
 $RO = 88'$



- NOTES:**
- ALL BRIDGE ANCHOR UNITS ARE TYPE III.
  - ALL GUARDRAIL END UNITS ARE GREU TL-3.
  - DURING CLEARING AND GRUBBING CONTRACTOR SHALL NOT ALLOW MECHANIZED VEHICLES TO ENTER ANY JURISDICTIONAL STREAM OR OTHER FEATURE.

| STRUCTURE | STATION   | OFFSET | TOP EL. | DESCRIPTION | AREA (AC.) |
|-----------|-----------|--------|---------|-------------|------------|
| 0401      | 12+67 -L- | 14 LT. | 36.5    | TB 2GI      | 0.03       |
| 0402      | 12+67 -L- | 31 LT. | -       | PIPE END    |            |
| 0403      | 14+00 -L- | 14 LT. | 36.4    | TB 2GI      | 0.07       |
| 0404      | 14+26 -L- | 55 LT. | -       | PIPE END    |            |



REVISIONS

11-FEB-2021 09:33  
BR-0119\_Rdy\_psh.dgn  
ide.bone