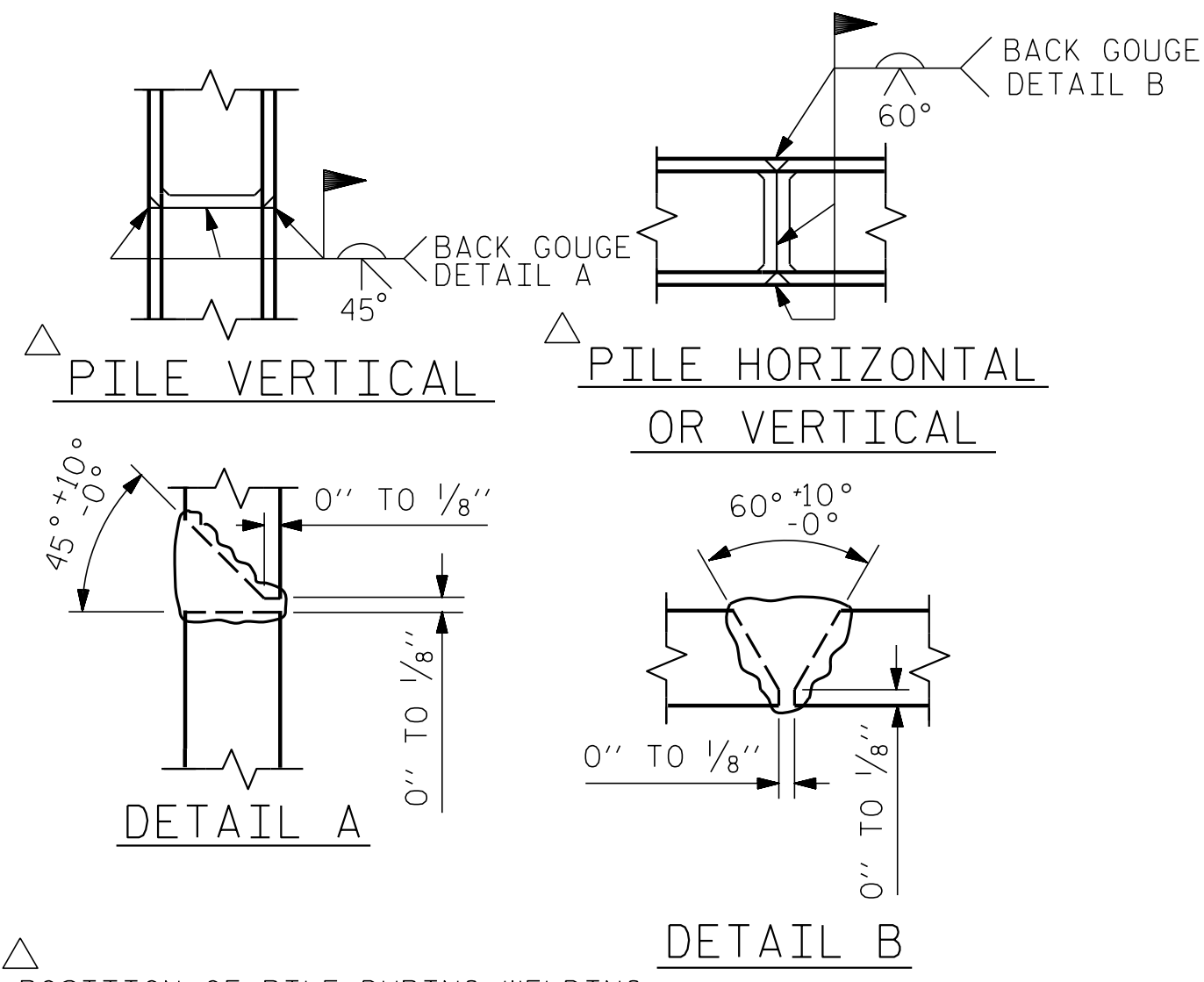


BAGGED STONE AND PIPE SHALL BE PLACED IMMEDIATELY AFTER COMPLETION OF END BENT EXCAVATION. PIPE MAY BE EITHER CONCRETE, CORRUGATED STEEL, CORRUGATED ALUMINUM ALLOY, OR CORRUGATED PLASTIC. PERFORATED PIPE WILL NOT BE ALLOWED.

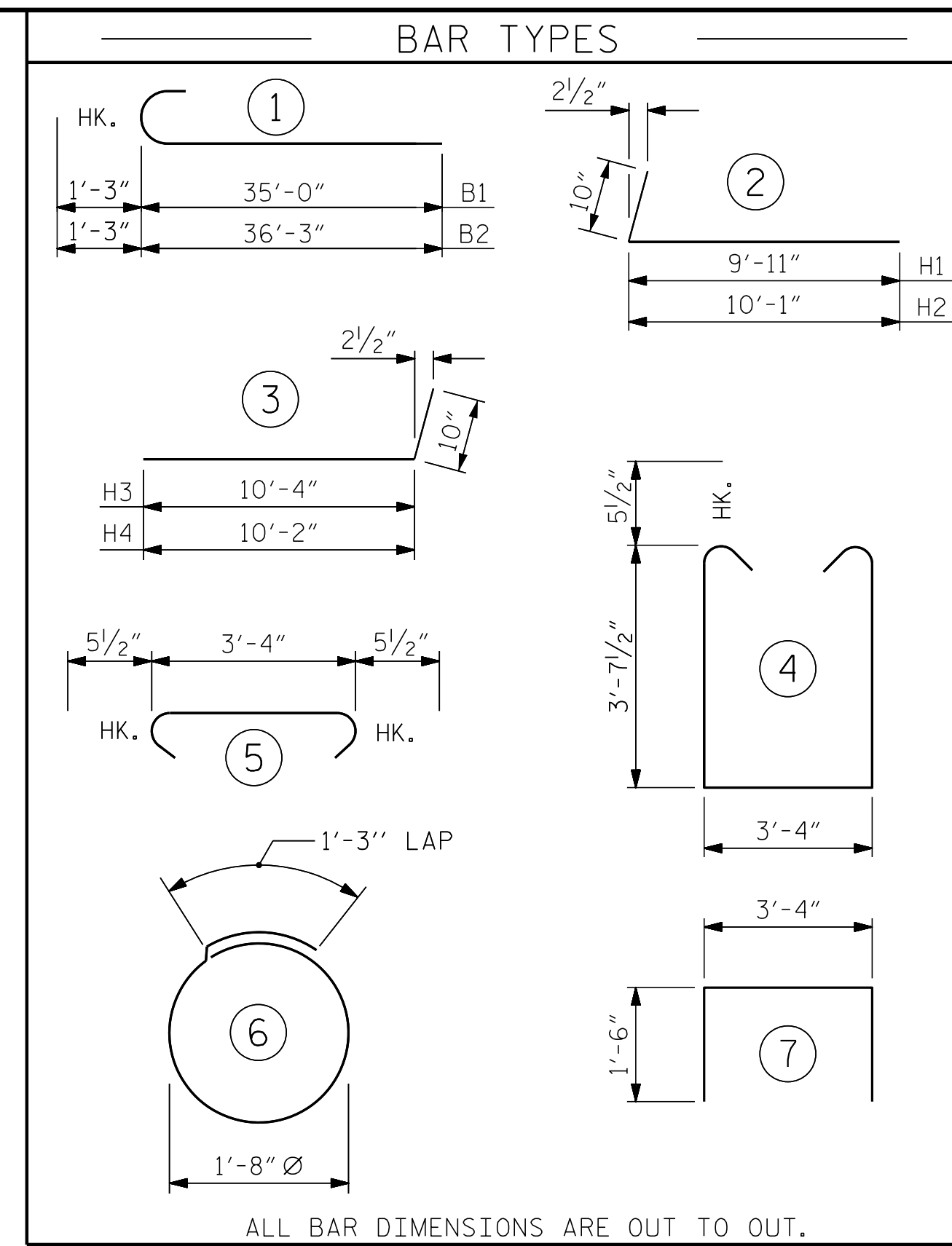
BAGGED STONE SHALL REMAIN IN PLACE UNTIL THE ENGINEER DIRECTS THAT IT BE REMOVED. THE CONTRACTOR SHALL REMOVE AND DISPOSE OF SILT ACCUMULATIONS AT BAGGED STONE WHEN SO DIRECTED BY THE ENGINEER. BAGS SHALL BE REMOVED AND REPLACED WHENEVER THE ENGINEER DETERMINES THAT THEY HAVE DETERIORATED AND LOST THEIR EFFECTIVENESS.

NO SEPARATE PAYMENT WILL BE MADE FOR THIS WORK AND THE ENTIRE COST OF THIS WORK SHALL BE INCLUDED IN THE UNIT CONTRACT PRICE BID FOR THE SEVERAL PAY ITEMS.

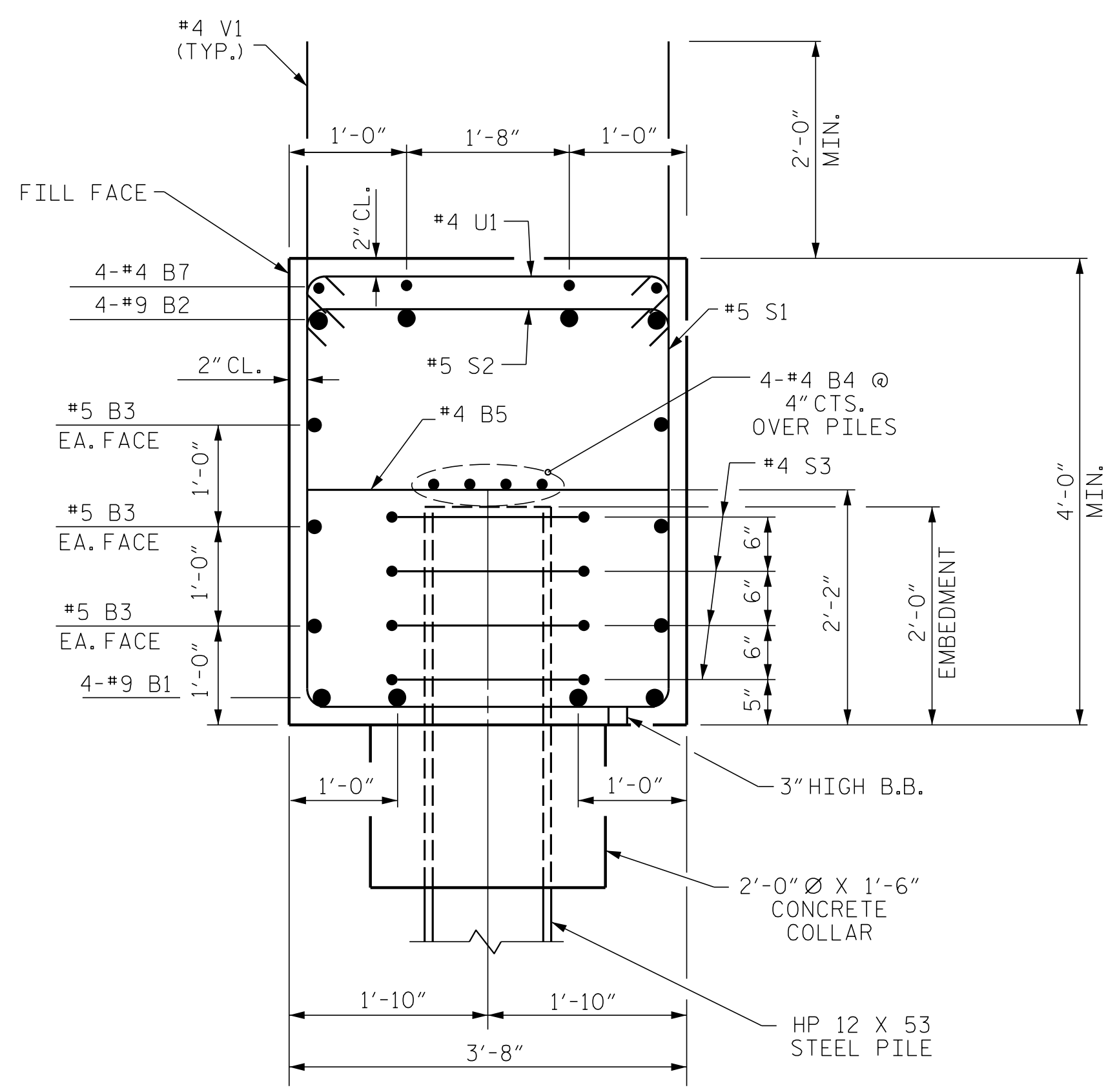
### TEMPORARY DRAINAGE AT END BENT



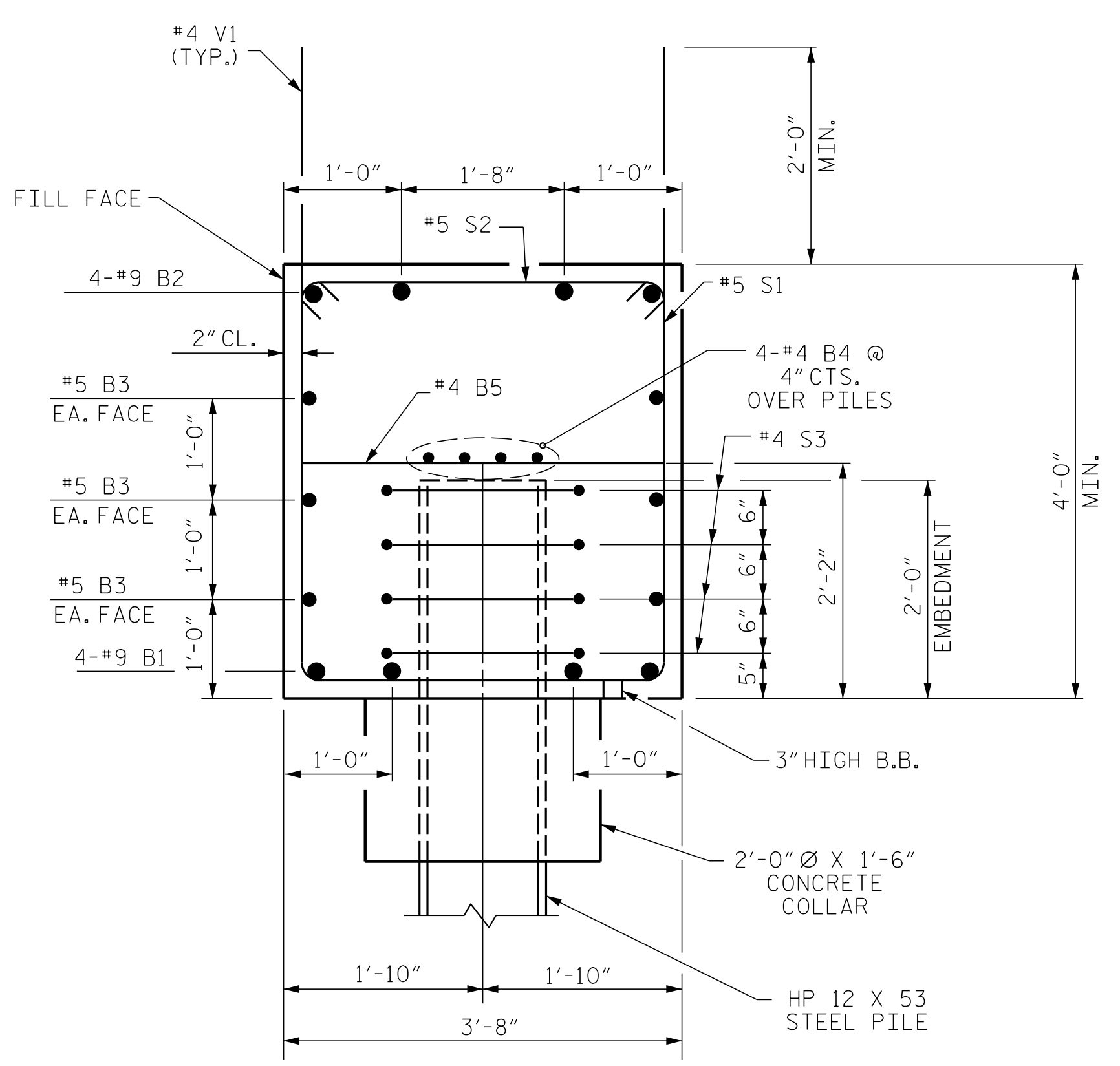
### PILE SPLICE DETAILS



BILL OF MATERIAL						
END BENT No. 2						
BAR NO.	NO.	SIZE	TYPE	LENGTH	WEIGHT	
B1	8	#9	1	36'-3"	986	
B2	8	#9	1	37'-6"	1020	
B3	12	#5	STR	33'-6"	419	
B4	12	#4	STR	22'-11"	184	
B5	16	#4	STR	3'-4"	36	
B6	8	#4	STR	9'-10"	53	
B7	4	#4	STR	13'-8"	37	
H1	14	#5	2	10'-9"	157	
H2	14	#5	2	10'-11"	159	
H3	14	#5	3	11'-2"	163	
H4	14	#5	3	11'-0"	161	
H5	32	#4	STR	3'-5"	73	
S1	84	#5	4	11'-6"	1008	
S2	84	#5	5	4'-3"	372	
S3	44	#4	6	6'-6"	191	
V1	102	#4	STR	6'-5"	437	
V2	60	#4	STR	9'-5"	377	
U1	23	#4	7	6'-4"	97	
REINFORCING STEEL					5,930 LBS.	
CLASS A CONCRETE BREAKDOWN						
POUR #1	CAP, CONC, COLLARS & LOWER PART OF WINGS				41.9 C.Y.	
POUR #2	UPPER PART OF WINGS				5.7 C.Y.	
TOTAL CLASS A CONCRETE					47.6 C.Y.	
HP 12 X 53 STEEL PILES						
NO: 11					LIN. FT.= 492	
STEEL PILE POINTS						11 EA.
PILE DRIVING EQUIPMENT SET UP FOR HP 12 X 53 STEEL PILES						11 EA.
PILE EXCAVATION NOT IN SOIL						31.0 LIN. FT.
PILE EXCAVATION IN SOIL						201.0 LIN. FT.

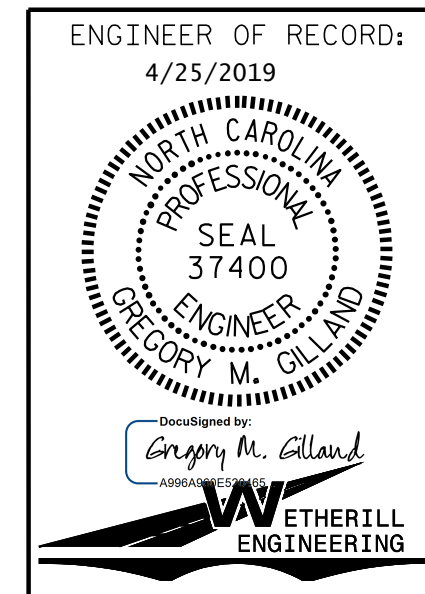


SECTION A-A



SECTION B-B

PROJECT NO. W-5600  
JOHNSTON COUNTY  
 STATION: 27+01.91 -Y7-  
 SHEET 3 OF 3



STATE OF NORTH CAROLINA  
 DEPARTMENT OF TRANSPORTATION  
 RALEIGH  
 SUBSTRUCTURE  
 END BENT No. 2

REVISIONS						SHEET NO.
NO.	BY:	DATE:	NO.	BY:	DATE:	S3-28
1			3			TOTAL SHEETS
2			4			32

DOCUMENT NOT CONSIDERED FINAL  
 UNLESS ALL SIGNATURES COMPLETED

P:\2017\1712101\W-5600\_USTO.Structures\GMA-Y7-over-L-W-5600\_XT-EB-WE I.dgn  
 4/25/2019 11:13:16 AM

DRAWN BY: D. HODGE DATE: 1/18  
 CHECKED BY: G.M. GILLAND DATE: 2/18

1223 Jones Franklin Rd.  
 Raleigh, N.C. 27606  
 Bus: 919 851 8077  
 Fax: 919 851 8107  
 LICENSE NO. F-0377