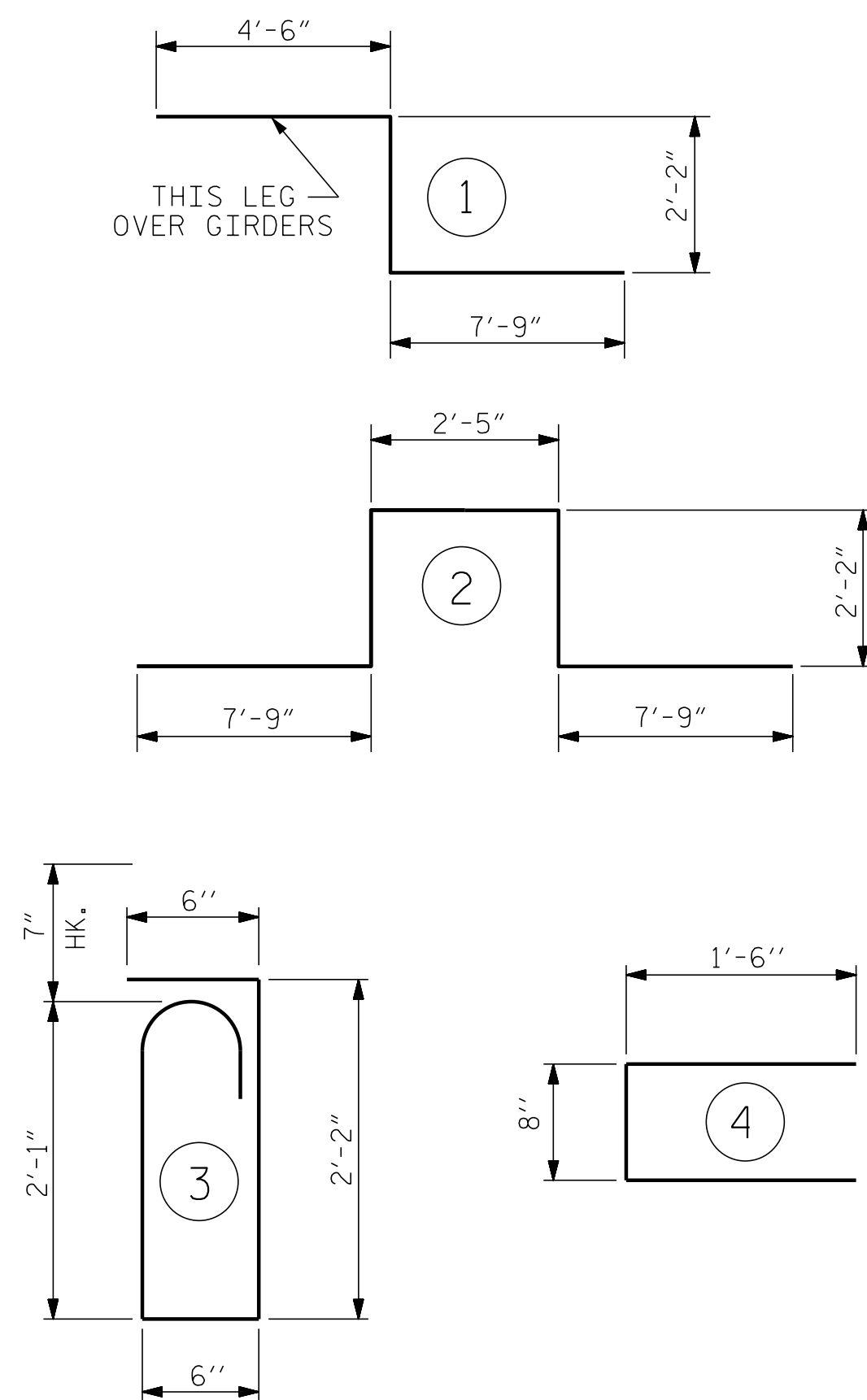


LAYOUT FOR COMPUTING AREA
 REINFORCED CONCRETE DECK SLAB
 (SQ. FT. = 4,502)

BAR TYPES



ALL BAR DIMENSIONS ARE OUT TO OUT

BILL OF MATERIAL

BAR	NO.	SIZE	TYPE	LENGTH	WEIGHT	BAR	NO.	SIZE	TYPE	LENGTH	WEIGHT
* A1	148	#5	STR	46'-11"	7242	A201	2	#5	STR	46'-1"	96
A2	148	#5	STR	46'-11"	7242	A202	2	#5	STR	45'-0"	94
						A203	2	#5	STR	43'-9"	91
* A101	2	#5	STR	46'-1"	96	A204	2	#5	STR	42'-9"	89
* A102	2	#5	STR	45'-0"	94	A205	2	#5	STR	41'-7"	87
* A103	2	#5	STR	43'-9"	91	A206	2	#5	STR	40'-6"	84
* A104	2	#5	STR	42'-9"	89	A207	2	#5	STR	39'-4"	82
* A105	2	#5	STR	41'-7"	87	A208	2	#5	STR	38'-3"	80
* A106	2	#5	STR	40'-6"	84	A209	2	#5	STR	37'-1"	77
* A107	2	#5	STR	39'-4"	82	A210	2	#5	STR	35'-11"	75
* A108	2	#5	STR	38'-3"	80	A211	2	#5	STR	34'-10"	73
* A109	2	#5	STR	37'-1"	77	A212	2	#5	STR	33'-8"	70
* A110	2	#5	STR	35'-11"	75	A213	2	#5	STR	32'-7"	68
* A111	2	#5	STR	34'-10"	73	A214	2	#5	STR	31'-5"	66
* A112	2	#5	STR	33'-8"	70	A215	2	#5	STR	30'-4"	63
* A113	2	#5	STR	32'-7"	68	A216	2	#5	STR	29'-2"	61
* A114	2	#5	STR	31'-5"	66	A217	2	#5	STR	28'-1"	59
* A115	2	#5	STR	30'-4"	63	A218	2	#5	STR	26'-11"	56
* A116	2	#5	STR	29'-2"	61	A219	2	#5	STR	25'-10"	54
* A117	2	#5	STR	28'-1"	59	A220	2	#5	STR	24'-8"	51
* A118	2	#5	STR	26'-11"	56	A221	2	#5	STR	23'-7"	49
* A119	2	#5	STR	25'-10"	54	A222	2	#5	STR	22'-5"	47
* A120	2	#5	STR	24'-8"	51	A223	2	#5	STR	21'-4"	45
* A121	2	#5	STR	23'-7"	49	A224	2	#5	STR	20'-2"	42
* A122	2	#5	STR	22'-5"	47	A225	2	#5	STR	19'-0"	40
* A123	2	#5	STR	21'-4"	45	A226	2	#5	STR	17'-11"	37
* A124	2	#5	STR	20'-2"	42	A227	2	#5	STR	16'-9"	35
* A125	2	#5	STR	19'-0"	40	A228	2	#5	STR	15'-8"	33
* A126	2	#5	STR	17'-11"	37	A229	2	#5	STR	14'-6"	30
* A127	2	#5	STR	16'-9"	35	A230	2	#5	STR	13'-5"	28
* A128	2	#5	STR	15'-8"	33	A231	2	#5	STR	12'-3"	26
* A129	2	#5	STR	14'-6"	30	A232	2	#5	STR	11'-2"	23
* A130	2	#5	STR	13'-5"	28	A233	2	#5	STR	10'-0"	21
* A131	2	#5	STR	12'-3"	26	A234	2	#5	STR	8'-11"	19
* A132	2	#5	STR	11'-2"	23	A235	2	#5	STR	7'-9"	16
* A133	2	#5	STR	10'-0"	21	A236	2	#5	STR	6'-8"	14
* A134	2	#5	STR	8'-11"	19	A237	2	#5	STR	5'-6"	11
* A135	2	#5	STR	7'-9"	16	A238	2	#5	STR	4'-4"	9
* A136	2	#5	STR	6'-8"	14	A239	2	#5	STR	3'-3"	7
* A137	2	#5	STR	5'-6"	11						
* A138	2	#5	STR	4'-4"	9	* B1	132	#4	STR	25'-3"	2226
* A139	2	#5	STR	3'-3"	7	B2	112	#5	STR	48'-7"	5675

— SUPERSTRUCTURE BILL OF MATERIAL —

	CLASS AA CONCRETE (CU. YDS.)	REINFORCING STEEL (LBS.)	* EPOXY COATED REINFORCING STEEL (LBS.)
TOTALS**	150.3	15,240	13,218

** QUANTITIES FOR BARRIER RAIL ARE NOT INCLUDED

* G1	2	#5	STR	51'-1"	107
* K1	8	#8	1	14'-5"	308
* K2	12	#8	2	22'-3"	713
K3	24	#6	STR	8'-9"	315
* S1	72	#4	4	3'-8"	176
* S2	72	#5	3	5'-10"	438

REINFORCING STEEL LBS. 15,240
 * EPOXY COATED REINFORCING STEEL LBS. 13,218
 * THESE BARS ARE EPOXY COATED.

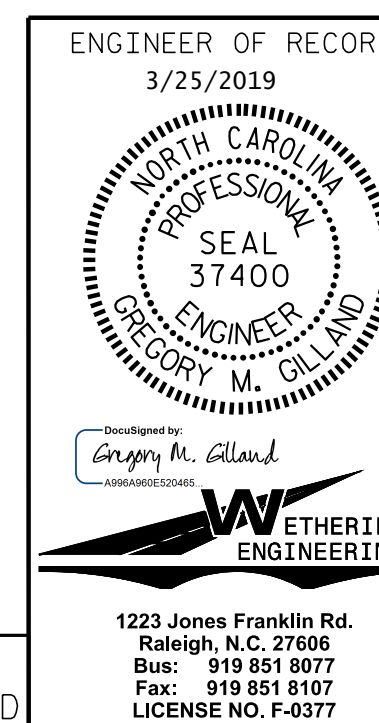
GROOVING BRIDGE FLOORS

APPROACH SLABS	1,972 SQ.FT.
BRIDGE DECK	3,885 SQ.FT.
TOTAL	5,857 SQ.FT.

BAR SIZE	SUPERSTRUCTURE EXCEPT APPROACH SLABS, PARAPET, AND BARRIER RAIL		APPROACH SLABS		PARAPET AND BARRIER RAIL
	EPOXY COATED	UNCOATED	EPOXY COATED	UNCOATED	
#4	2'-0"	1'-9"	2'-0"	1'-9"	2'-9"
#5	2'-6"	2'-2"	2'-6"	2'-2"	3'-5"
#6	3'-0"	2'-7"	3'-10"	2'-7"	4'-4"
#7	5'-3"	3'-6"			
#8	6'-10"	4'-7"			

SUPERSTRUCTURE REINFORCING STEEL LENGTHS ARE BASED ON THE FOLLOWING MINIMUM SPLICE LENGTHS

PROJECT NO. W-5600
JOHNSTON COUNTY
 STATION: 217+31.76 -L-



STATE OF NORTH CAROLINA
 DEPARTMENT OF TRANSPORTATION
 RALEIGH
 SUPERSTRUCTURE
 BILL OF MATERIAL
 (RIGHT LANE)

REVISIONS						SHEET NO.
NO.	BY:	DATE:	NO.	BY:	DATE:	S2-14
1			3			TOTAL SHEETS
2			4			18

DOCUMENT NOT CONSIDERED FINAL
 UNLESS ALL SIGNATURES COMPLETED

DRAWN BY: D. HODGE DATE: 1/18
 CHECKED BY: G.M. GILLAND DATE: 2/18