

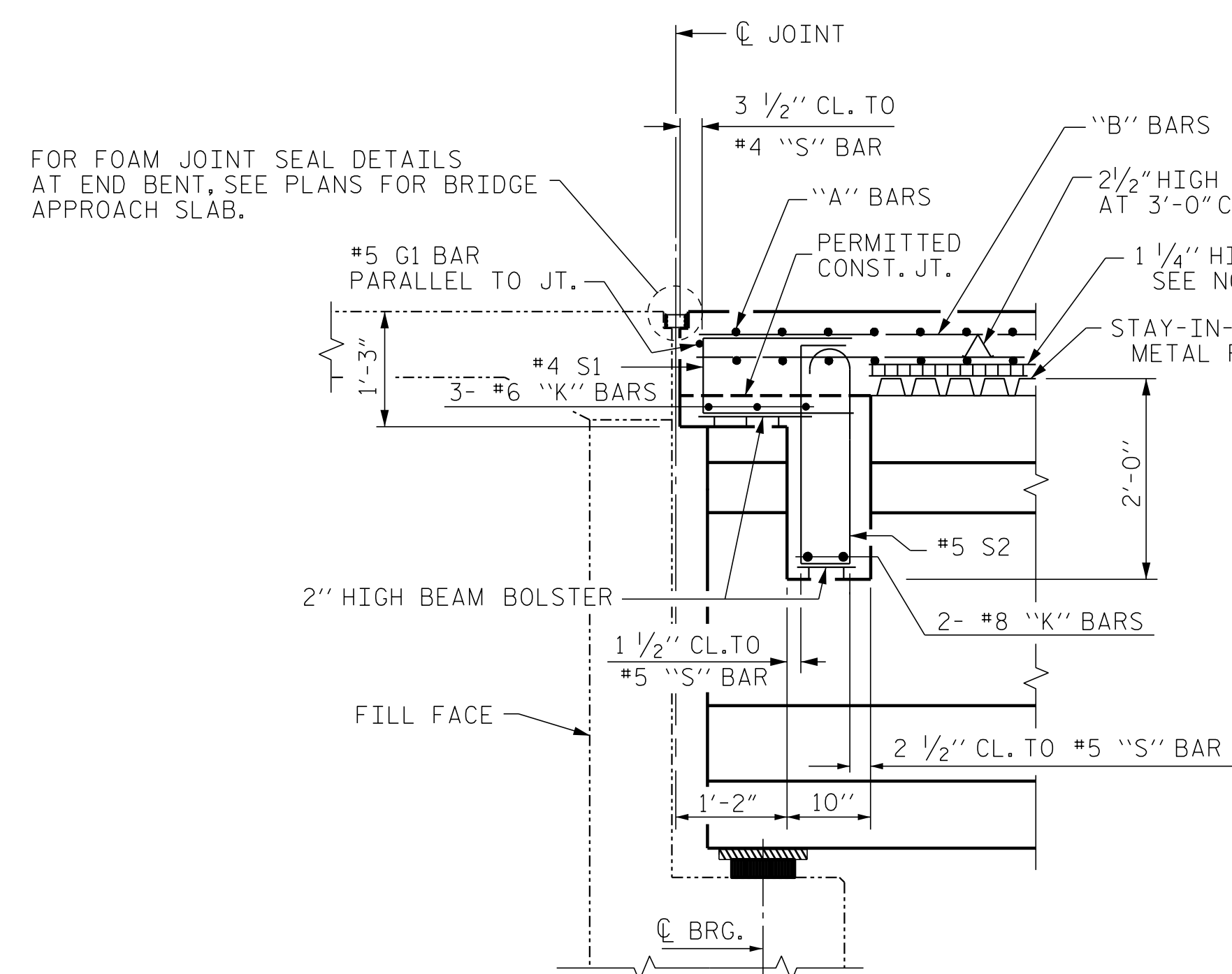
HALF SECTION - END BENT DIAPHRAGM

HALF SECTION - INTERMEDIATE DIAPHRAGM

NOTES

- PROVIDE 1/4" HIGH BEAM BOLSTERS UPPER AT 4'-0" CTS. ATOP THE METAL STAY-IN-PLACE FORMS TO SUPPORT THE BOTTOM MAT OF 'A' BARS. WHEN USING REMOVABLE FORMS, PROVIDE CONTINUOUS HIGH CHAIRS FOR METAL DECK (C.H.C.M.) @ 4'-0" CTS. WITH A HEIGHT TO SUPPORT THE BOTTOM MAT OF 'A' BARS A CLEAR DISTANCE OF 2 1/2" ABOVE THE TOP OF THE REMOVABLE FORM.
- LONGITUDINAL STEEL MAY BE SHIFTED SLIGHTLY, AS NECESSARY, TO AVOID INTERFERENCE WITH STIRRUPS IN PRESTRESSED CONCRETE GIRDERS.
- BARRIER RAIL SHALL NOT BE CAST UNTIL ALL SLAB CONCRETE HAS BEEN CAST AND HAS REACHED A MINIMUM COMPRESSIVE STRENGTH OF 3,000 PSI.
- #5 G1 BAR MAY BE SHIFTED SLIGHTLY AS NECESSARY TO CLEAR REINFORCING STEEL AND STIRRUPS.

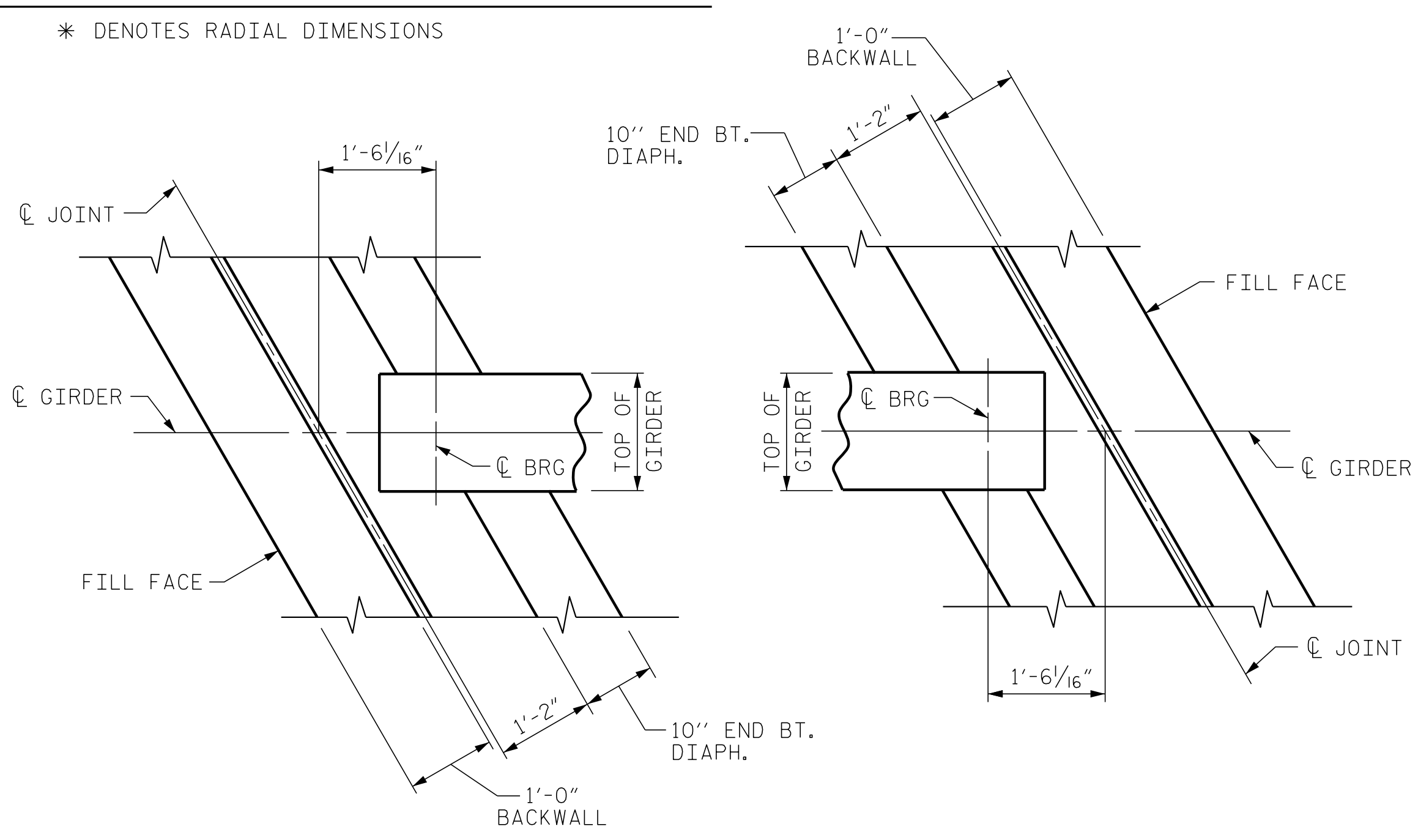
PROJECT NO. W-5600
JOHNSTON COUNTY
 STATION: 217+31.76 -L-



SECTION THRU END BENT DIAPHRAGM

TYPICAL SECTION

* DENOTES RADIAL DIMENSIONS



END BENT No. 1 DIAPHRAGM

END BENT No. 2 DIAPHRAGM

PLAN

DOCUMENT NOT CONSIDERED FINAL
 UNLESS ALL SIGNATURES COMPLETED

ENGINEER OF RECORD:
 3/25/2019

 Gregory M. Gilland
 ETHERILL ENGINEERING

STATE OF NORTH CAROLINA
 DEPARTMENT OF TRANSPORTATION
 RALEIGH

SUPERSTRUCTURE
 TYPICAL SECTION
 (RIGHT LANE)

REVISIONS					
NO.	BY:	DATE:	NO.	BY:	DATE:
1			3		
2			4		

SHEET NO.
 S2-5
 TOTAL SHEETS
 18

P:\2017\1712101\W-5600_STRUCTURES\DGN\L-Over-Y9-DGN (RIGHT LANE)\WE I.dgn
 3/20/2019 8:58:34 AM

DRAWN BY: D. HODGE DATE: 12/17
 CHECKED BY: G.M. GILLAND DATE: 2/18