

AT END OF GIRDER AT C OF GIRDER

0.6" Ø LOW RELAXATION STRAND LAYOUT

△ STRANDS DEBONDED FOR 4'-0" FROM END OF GIRDER
 ○ STRANDS DEBONDED FOR 8'-0" FROM END OF GIRDER

NOTES

ALL PRESTRESSING STRANDS SHALL BE 7-WIRE LOW-RELAXATION GRADE 270 STRANDS AND SHALL CONFORM TO AASHTO M203 EXCEPT FOR SAMPLING REQUIREMENTS WHICH SHALL BE IN ACCORDANCE WITH THE STANDARD SPECIFICATIONS.

APPLY EPOXY PROTECTIVE COATING TO END OF GIRDER SURFACES.

EMBEDDED PLATE "B-1" SHALL BE GALVANIZED IN ACCORDANCE WITH THE STANDARD SPECIFICATIONS.

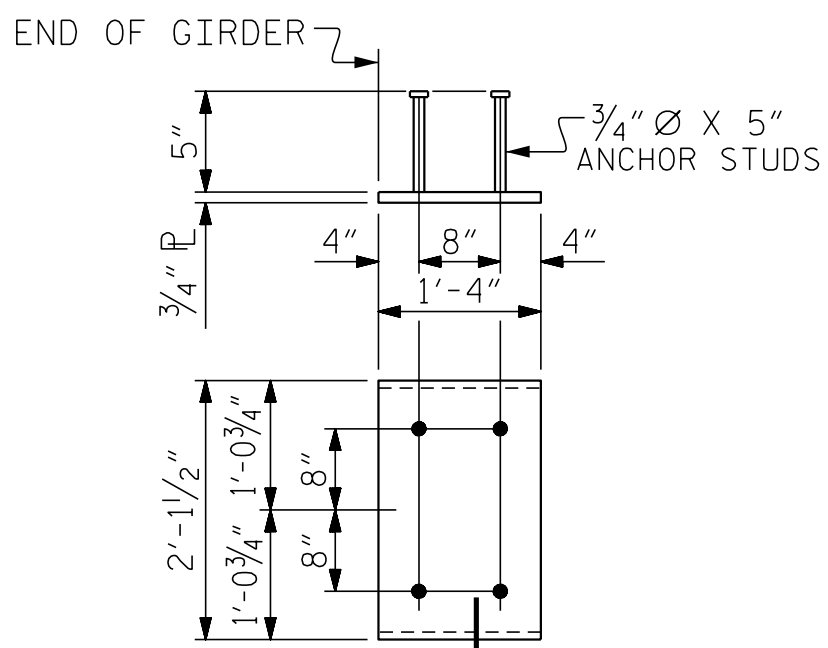
ANCHOR STUDS SHALL CONFORM TO AASHTO M169 GRADES 1010 THROUGH 1020 OR APPROVED EQUAL, AND SHALL MEET THE TYPE "B" REQUIREMENTS OF SUBSECTION 7.3 OF THE ANSI/AASHTO/AWS D1.5 BRIDGE WELDING CODE.

ALL PRESTRESSED STRANDS SHALL BE CUT FLUSH WITH THE GIRDER ENDS.

THE TRANSFER OF LOAD FROM THE ANCHORAGES TO THE GIRDER SHALL BE DONE WHEN CONCRETE HAS REACHED A COMPRESSIVE STRENGTH OF NOT LESS THAN 6000 PSI.

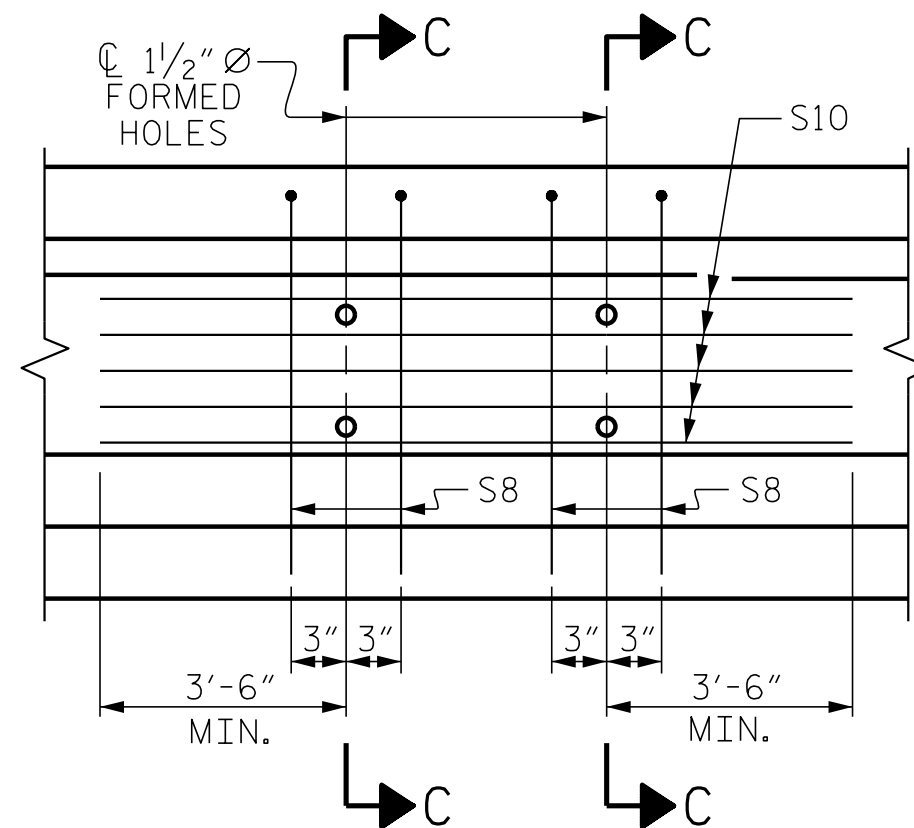
DEPENDING ON THE TYPE OF SYSTEM USED TO SUPPORT THE DECK SLAB FORMS, PRESET ANCHORS MAY BE NECESSARY IN THE PRESTRESSED CONCRETE GIRDER.

THE TOP SURFACE OF THE GIRDER SHALL BE RAKED TO A DEPTH OF 1/4" EXCEPT IN THE AREA BETWEEN THE STIRRUP AND THE EDGE OF THE GIRDER.



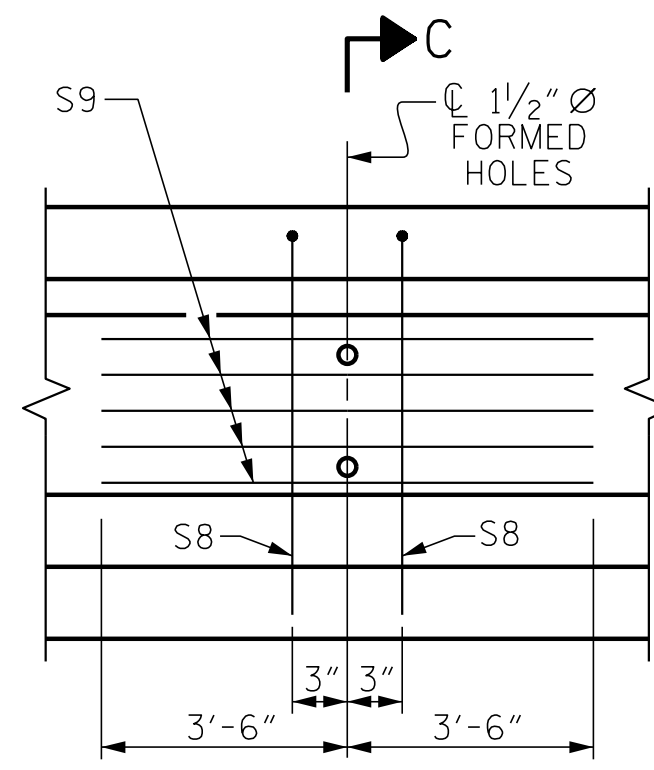
EMBEDDED PLATE "B-1" DETAILS

TWO EMBEDDED PLATES "B-1" ARE REQUIRED FOR EACH GIRDER.



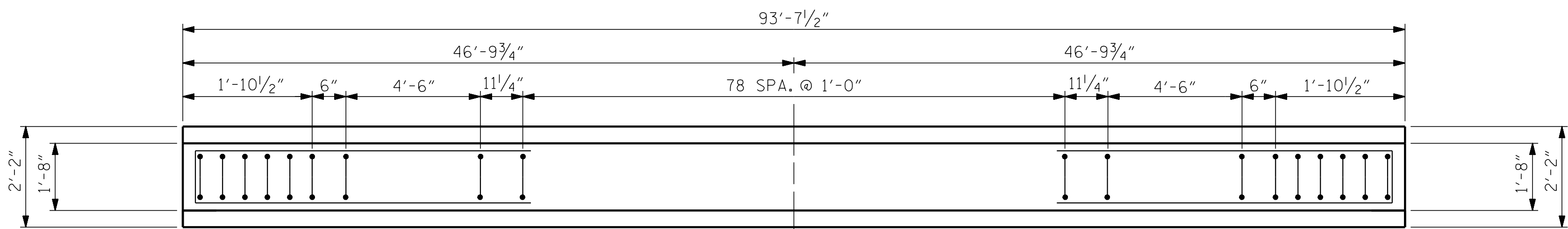
PARTIAL ELEVATION

SHOWING INTERMEDIATE DIAPHRAGM REINFORCING STEEL FOR GIRDER Nos. 2, 3 & 4

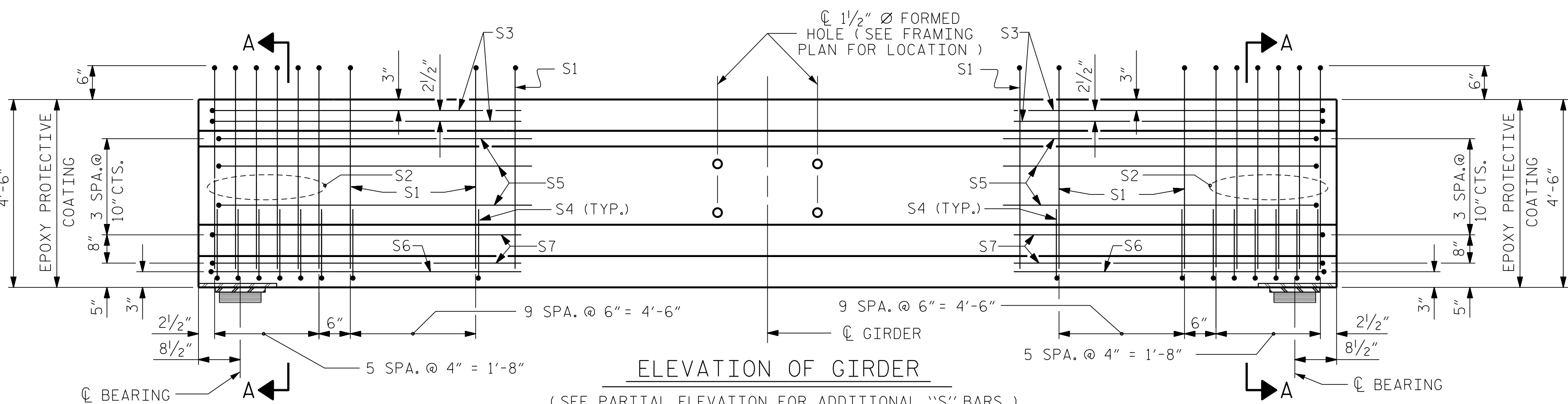


PARTIAL ELEVATION

SHOWING INTERMEDIATE DIAPHRAGM REINFORCING STEEL FOR GIRDER Nos. 1 & 5



PLAN OF GIRDER



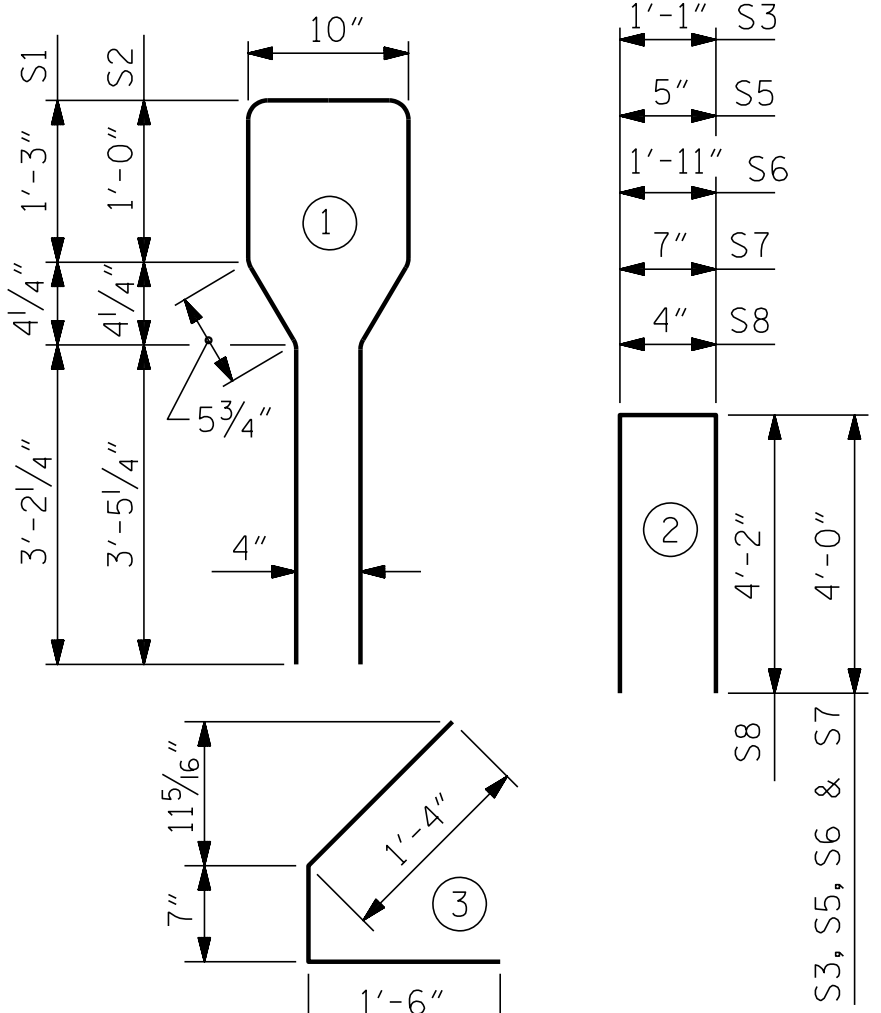
ELEVATION OF GIRDER

(SEE PARTIAL ELEVATION FOR ADDITIONAL "S" BARS)

GDR.	BAR	NUMBER	SIZE	TYPE	LENGTH	WEIGHT
GDR. 1 & 5	S8	2	#5	2	8'-8"	18
	S8	4	#5	2	8'-8"	36
GDR. 2, 3 & 4	S9	5	#4	STR	7'-0"	23
	S10	5	#4	STR	11'-6"	38

BAR TYPES

ALL BAR DIMENSIONS ARE OUT-TO-OUT



QUANTITIES FOR ONE GIRDER

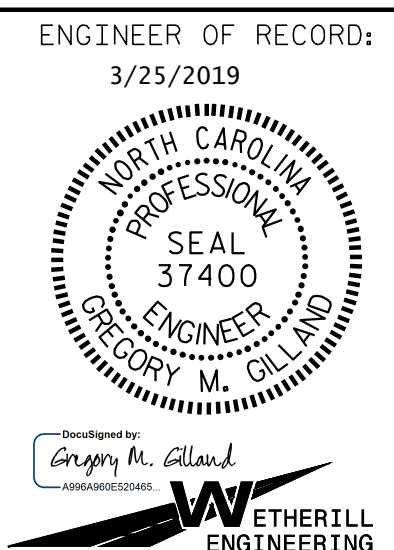
	REINFORCING STEEL	7500 PSI CONCRETE	0.6" Ø L. R. STRANDS
	LB.	C.Y.	No.
GDR. 1 & 5	1,178	19.0	36
GDR. 2, 3 & 4	1,211	19.0	36

GIRDERS REQUIRED

NUMBER	LENGTH	TOTAL LENGTH
5	93'-7 1/2"	468'-1 1/2"

PROJECT NO. W-5600
 JOHNSTON COUNTY
 STATION: 217+31.76 -L-

SHEET 1 OF 2



STATE OF NORTH CAROLINA
 DEPARTMENT OF TRANSPORTATION
 RALEIGH
 STANDARD
 AASHTO TYPE IV
 PRESTRESSED CONCRETE GIRDER
 (LEFT LANE)

REVISIONS						SHEET NO.
NO.	BY:	DATE:	NO.	BY:	DATE:	S1-9
1			3			TOTAL SHEETS
2			4			27

DOCUMENT NOT CONSIDERED FINAL UNLESS ALL SIGNATURES COMPLETED

P:\2017\1712\101\W-5600_USTO\Structures\DGM-L-Over-Y9-DGN (LEFT LANE)\W-5600_Y9_PCG (LEFT LANE)_WE.dgn
 3/20/2019 7:46:59 AM

ASSEMBLED BY : D. HODGE	DATE : 1/18
CHECKED BY : G.M. GILLAND	DATE : 2/18
DRAWN BY : JMB 12/87	REV. 10/1/11 MAA/GM
CHECKED BY : ARB 12/87	REV. 1/15 MAA/TMG
	REV. 12/17 MAA/THC