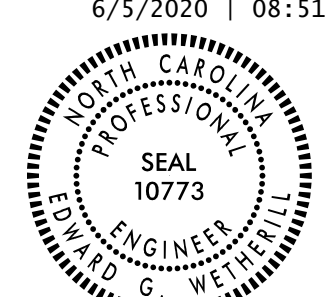


8/17/99

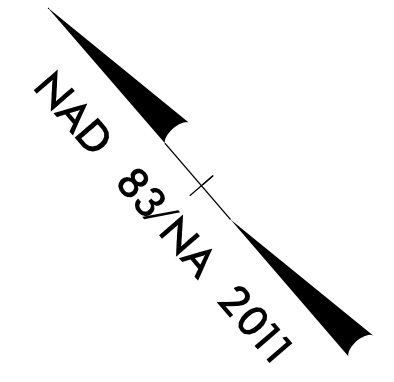
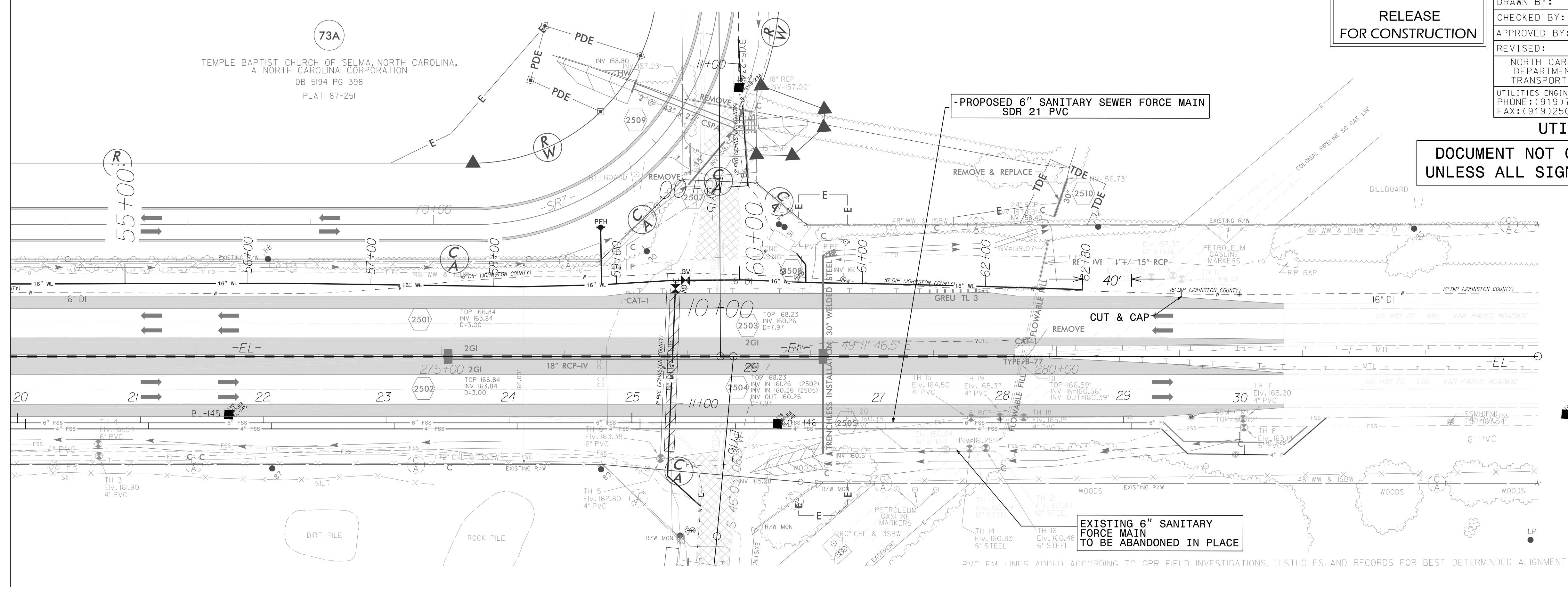
NOTE: CONTRACTOR TO UTILIZE HORIZONTAL & VERTICAL BENDS AS NECESSARY

FINAL DESIGN
RELEASE FOR CONSTRUCTION

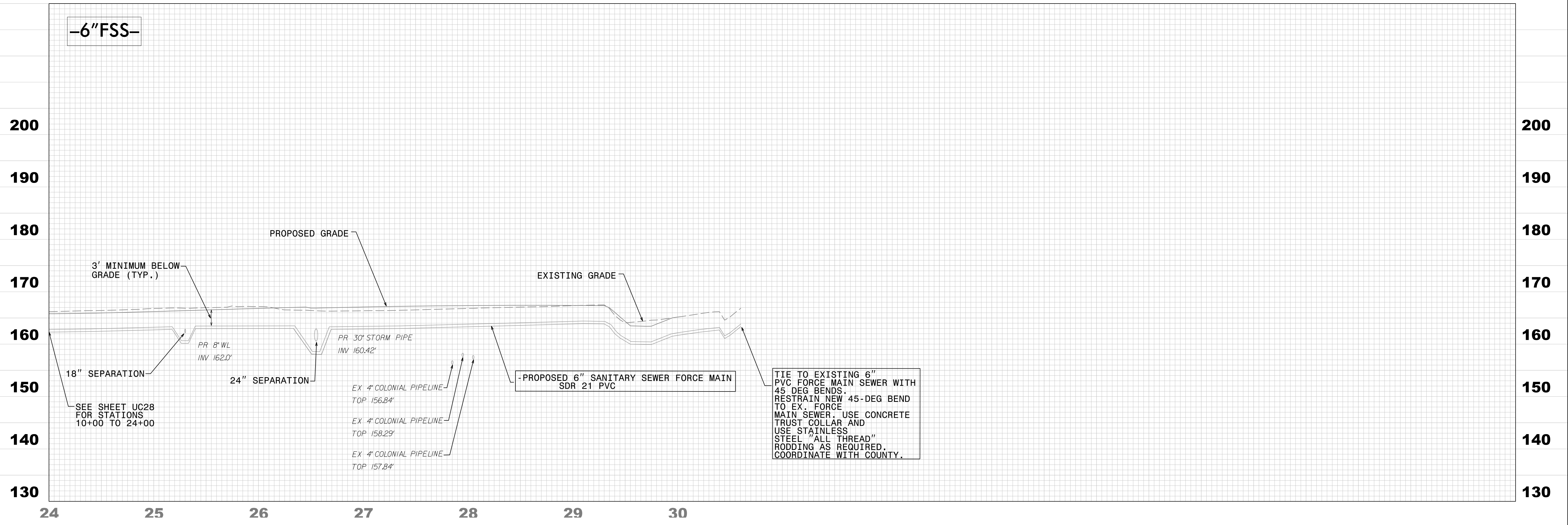
PROJECT REFERENCE NO. W-5600	SHEET NO. UC-29
DESIGNED BY: SS	6/5/2020 10:51:38 EDT
DRAWN BY: SS	
CHECKED BY: MVZ	
APPROVED BY: MVZ	UTILITIES ENGINEERING SEC. PHONE: (919) 707-6690 FAX: (919) 250-4151
REVISED:	UTILITIES CONSTRUCTION PLANS ONLY

UTILITY CONSTRUCTION
DOCUMENT NOT CONSIDERED FINAL UNLESS ALL SIGNATURES COMPLETED

MATCHLINE
-L- STA. 273+00
SEE SHEET UC-24



REVISIONS



TIE TO EXISTING 6" PVC FORCE MAIN SEWER WITH 45 DEG BENDS. RESTRAIN NEW 45-DEG BEND TO EX. FORCE MAIN SEWER. USE CONCRETE TRUST COLLAR AND USE STAINLESS STEEL "ALL THREAD" RODDING AS REQUIRED. COORDINATE WITH COUNTY.