


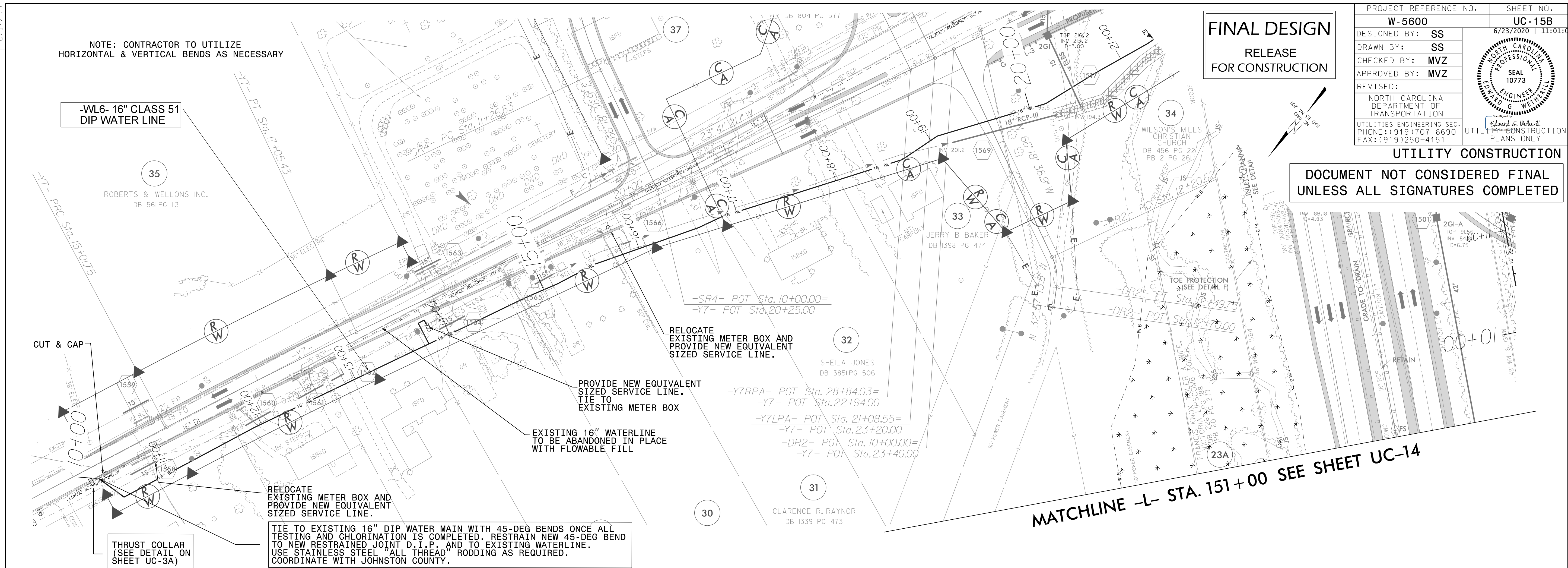
8/17/99

NOTE: CONTRACTOR TO UTILIZE HORIZONTAL & VERTICAL BENDS AS NECESSARY

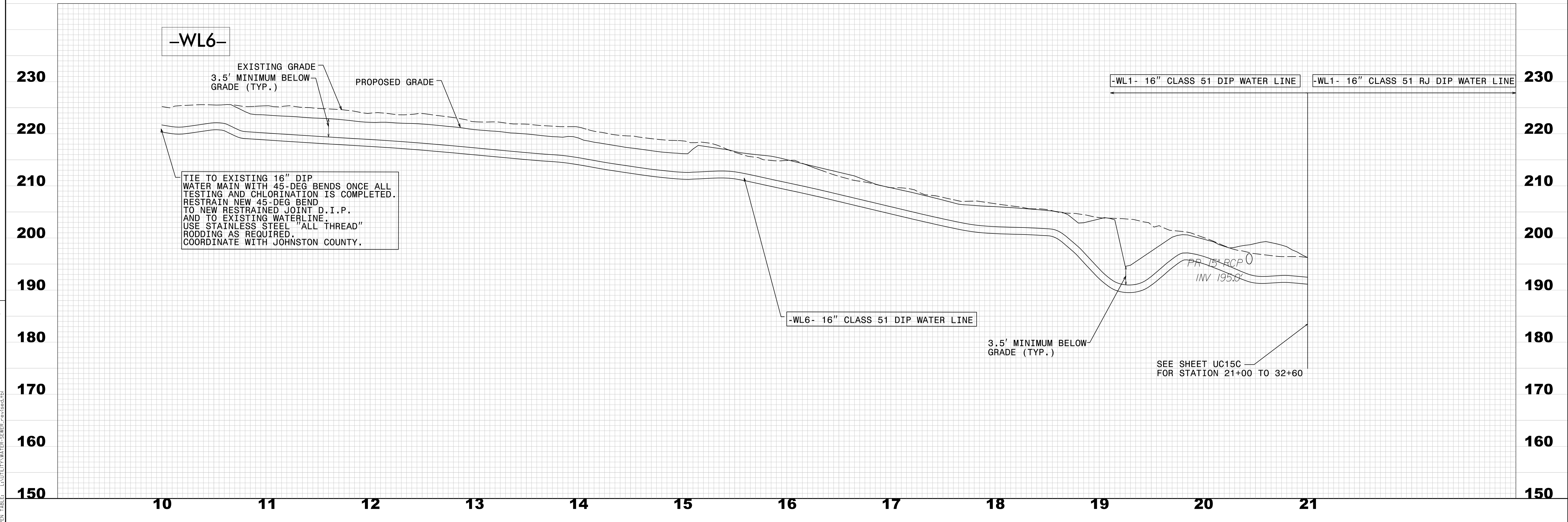
**FINAL DESIGN**  
RELEASE FOR CONSTRUCTION

|  |   |
|--|---|
| PROJECT REFERENCE NO.  | SHEET NO.   |
| W-5600   | UC-15B  |
| DESIGNED BY: SS  | 6/23/2020 11:01:01  |
| DRAWN BY: SS   |  |
| CHECKED BY: MVZ  |   |
| APPROVED BY: MVZ   |   |
| REVISED:   |   |
| NORTH CAROLINA DEPARTMENT OF TRANSPORTATION<br>UTILITIES ENGINEERING SECTION<br>PHONE: (919) 707-6690<br>FAX: (919) 250-4151 |   |

UTILITY CONSTRUCTION  
DOCUMENT NOT CONSIDERED FINAL UNLESS ALL SIGNATURES COMPLETED



MATCHLINE -L- STA. 151+00 SEE SHEET UC-14



-WL6-

EXISTING GRADE  
3.5' MINIMUM BELOW GRADE (TYP.)  
PROPOSED GRADE

TIE TO EXISTING 16" DIP WATER MAIN WITH 45-DEG BENDS ONCE ALL TESTING AND CHLORINATION IS COMPLETED. RESTRAIN NEW 45-DEG BEND TO NEW RESTRAINED JOINT D.I.P. AND TO EXISTING WATERLINE. USE STAINLESS STEEL "ALL THREAD" RODDING AS REQUIRED. COORDINATE WITH JOHNSTON COUNTY.

-WL6- 16" CLASS 51 DIP WATER LINE

-WL1- 16" CLASS 51 DIP WATER LINE

-WL1- 16" CLASS 51 RJ DIP WATER LINE

3.5' MINIMUM BELOW GRADE (TYP.)

SEE SHEET UC15C FOR STATION 21+00 TO 32+60

REVISIONS

8/17/99  
REVISED BY: MVZ  
DATE: 6/23/2020  
PROJECT: W-5600 UC-15B