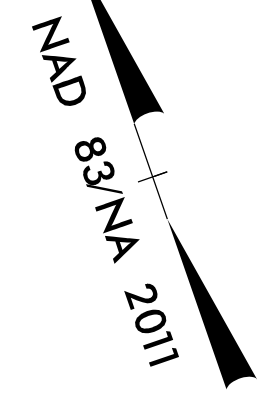


8/17/99



8

DOUBLE Z FARMS LIMITED PARTNERSHIP  
DB 2001/PG 927

MATCHLINE -L- STA. 73+00  
SEE SHEET UC-8

17  
PATTIE B. PROCTOR  
DB 699 PG 604

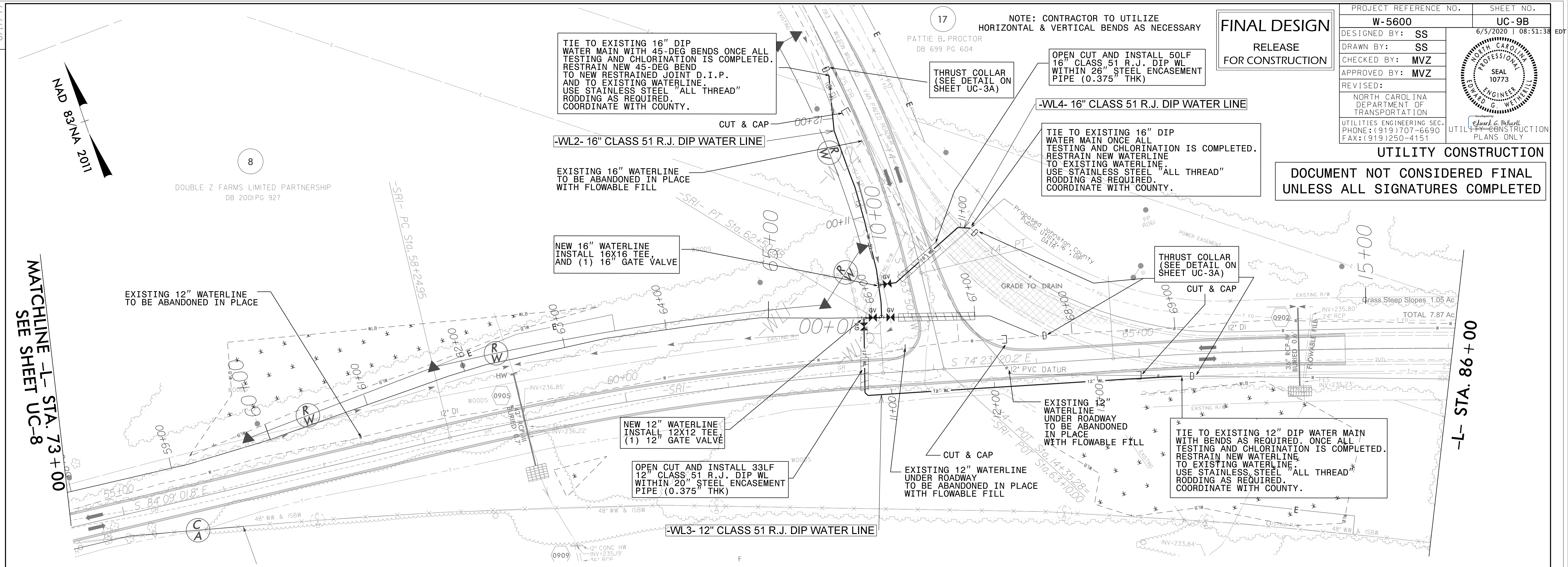
NOTE: CONTRACTOR TO UTILIZE  
HORIZONTAL & VERTICAL BENDS AS NECESSARY

**FINAL DESIGN**

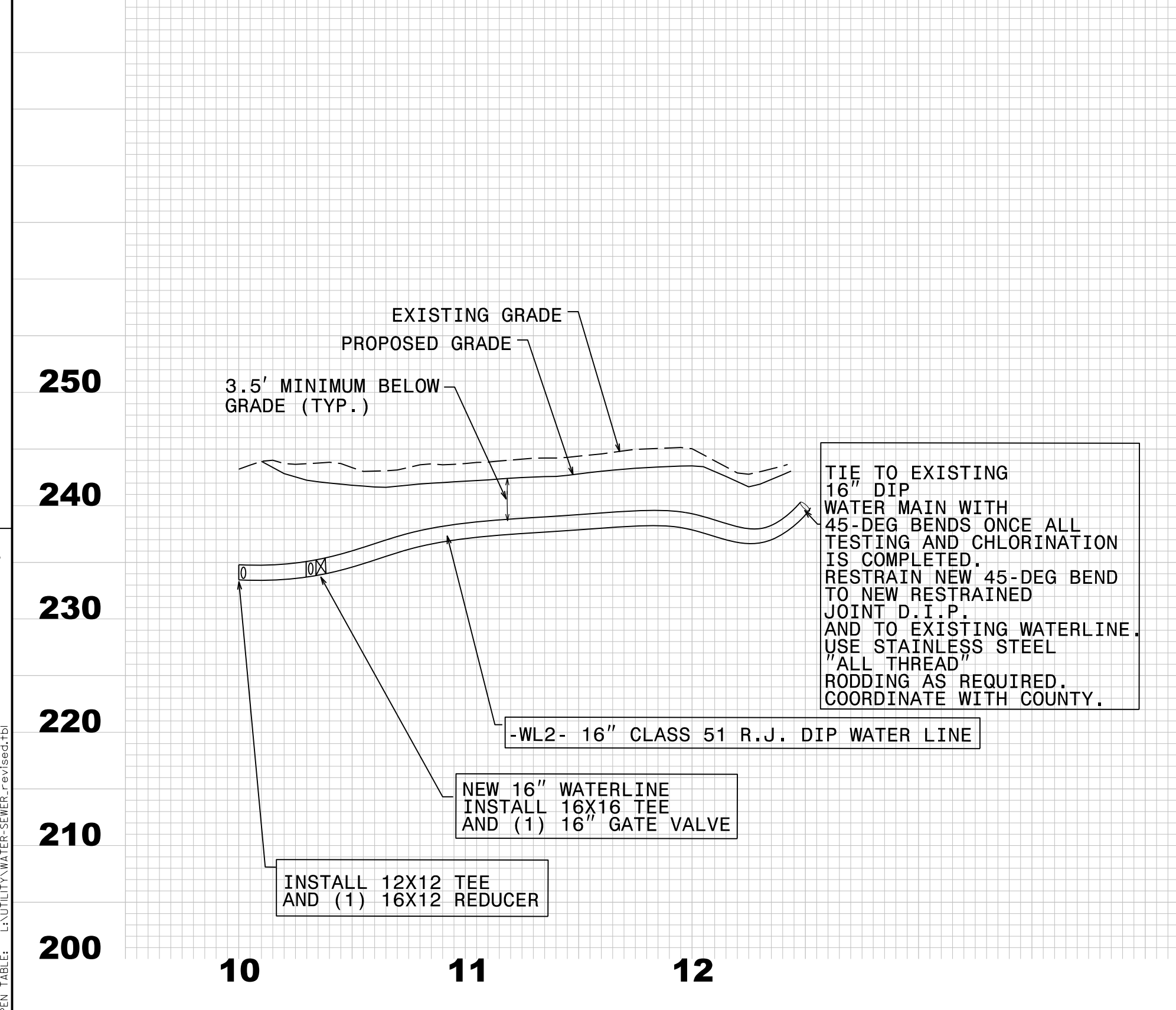
RELEASE  
FOR CONSTRUCTION

PROJECT REFERENCE NO. <b>W-5600</b>	SHEET NO. <b>UC-9B</b>
DESIGNED BY: <b>SS</b>	DATE: 6/5/2020 08:51:38 EDT
DRAWN BY: <b>SS</b>	NORTH CAROLINA PROFESSIONAL ENGINEERS SEAL 10773
CHECKED BY: <b>MVZ</b>	
APPROVED BY: <b>MVZ</b>	NORTH CAROLINA DEPARTMENT OF TRANSPORTATION UTILITIES ENGINEERING SEC. PHONE: (919) 707-6630 FAX: (919) 250-4151
REVISED:	
UTILITY CONSTRUCTION	

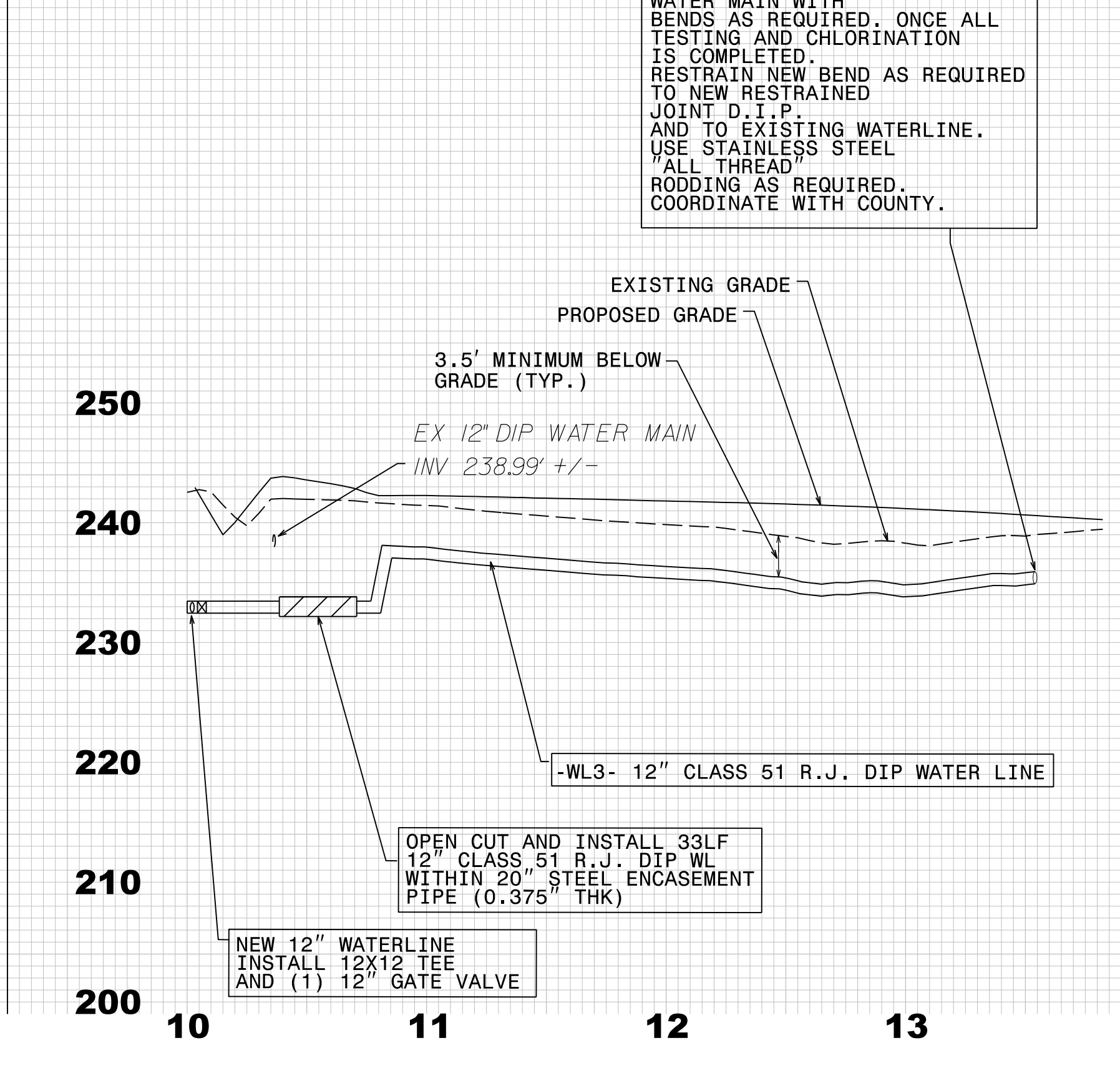
DOCUMENT NOT CONSIDERED FINAL  
UNLESS ALL SIGNATURES COMPLETED



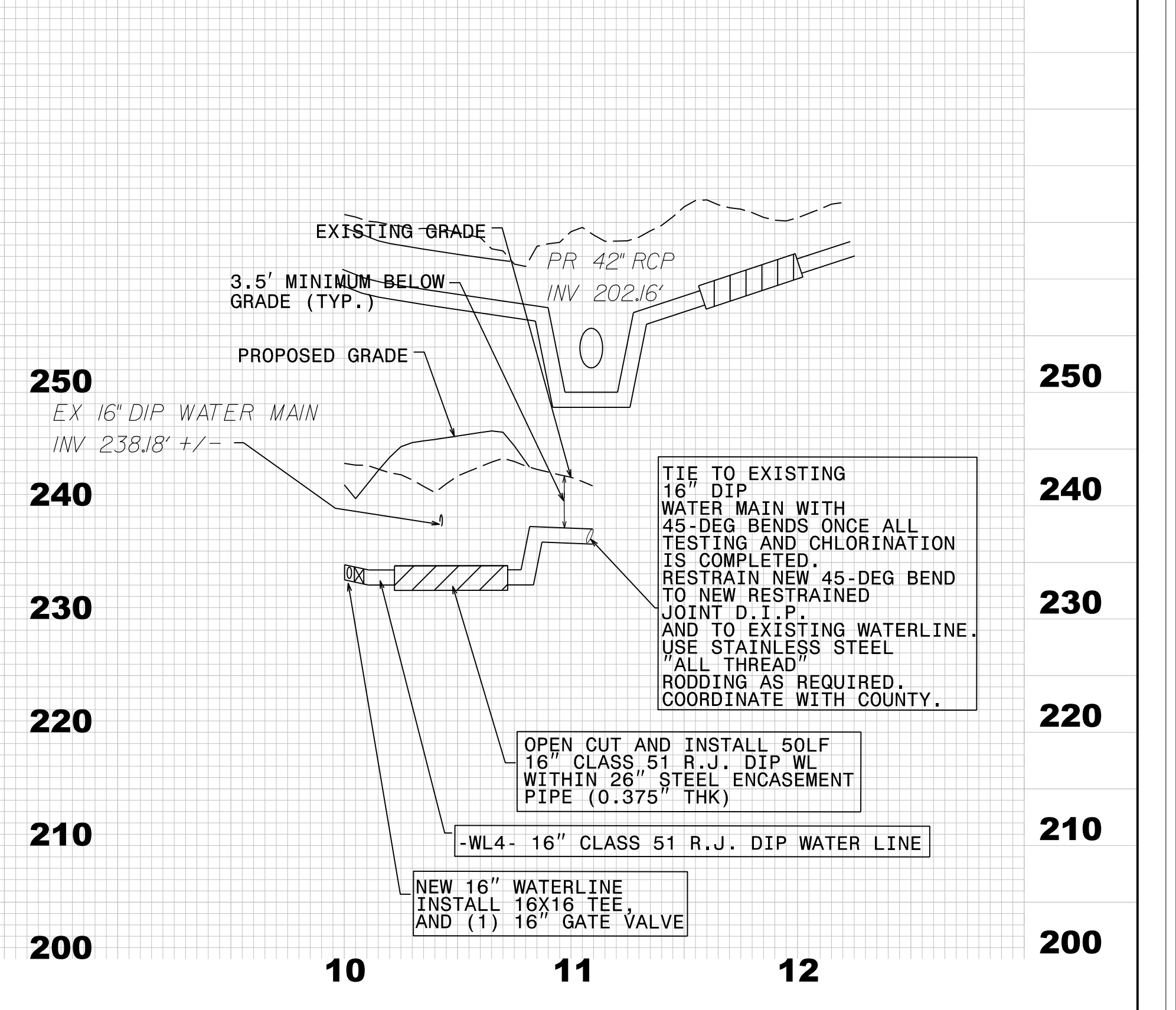
-WL2-



-WL3-



-WL4-



REVISIONS